

1854.

VICTORIA.

I M M I G R A T I O N .

LAID UPON THE COUNCIL TABLE BY THE COLONIAL SECRETARY.

BY COMMAND OF

HIS EXCELLENCY THE LIEUTENANT GOVERNOR.

AND

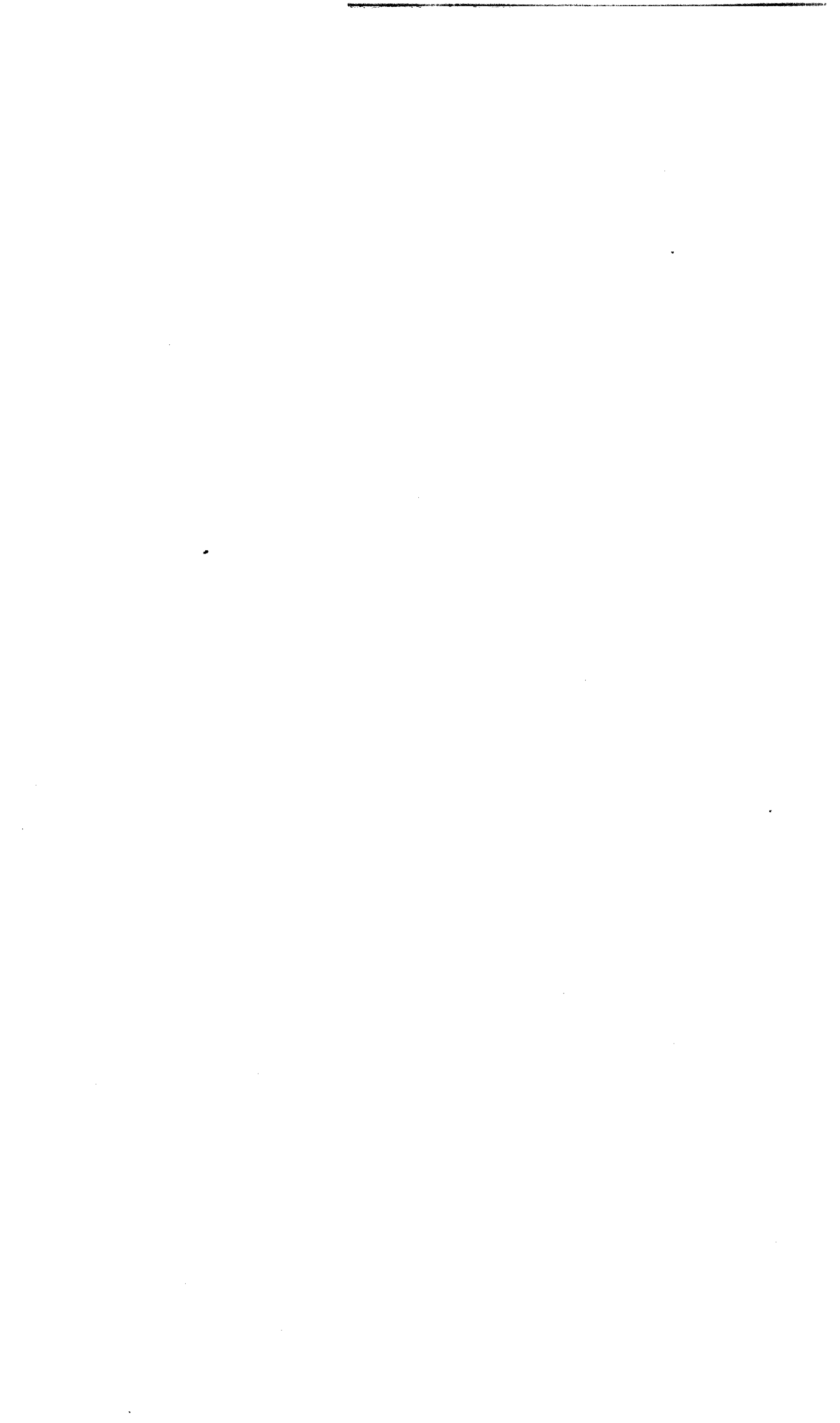
ORDERED BY THE COUNCIL TO BE PRINTED.

27th September, 1854.

By Authority:

JOHN FERRES, GOVERNMENT PRINTER, MELBOURNE.

A.—No. 8.



REPORT.

Immigration Office,
Melbourne, 12th August, 1854.

SIR,

I do myself the honor to submit to your Excellency the following Report upon the Immigration and Emigration of the year 1853, accompanied by a series of Returns, in which I have endeavoured to embody as much statistical information as my office will enable me to supply, of a nature which will be interesting to Her Majesty's Government or the public.

2. I propose to follow the arrangement adopted by my predecessors, and consider the subject under the heads of Assisted Immigration, Unassisted Immigration, Emigration, and the Houseless Immigrants' Asylums. To these must be added the Sanitary Station, which, till lately, has formed a branch of this department.

3. Assisted or Government Immigration has been maintained through-Assisted Immigration
out the year at a rate nearly equal to the importation of 1852. In the Appendices I place a statement giving the name of each vessel chartered by Her Majesty's Colonial Land and Emigration Commissioners, which arrived during the year, the length of voyage in each case, the births, deaths, numbers introduced, contract price, and cost of introduction. Return No. 1.

4. On contrasting this Table with that furnished by my predecessor for the year 1852, it will be found that while the actual importation of souls has diminished from 15,477 to 14,578, the mortality on board of emigrant ships has also considerably decreased; the average of deaths having fallen from 5.5 to 3.6 per cent. In the last seventeen ships it amounted to but 1.3 per cent. upon the numbers embarked, plus the numbers born, and of the whole 546 deaths, 149 were those of infants under one year, 287 children between one and fourteen, leaving the small remainder 110 adults. These very satisfactory results, and the improved general health of the emigrants landed, may be attributed in a great measure to the employment of a superior class of ships, carrying fewer passengers and on one deck only, thus affording better accommodation and improved ventilation. It may now be considered an established fact, that the larger the ship, the shorter will be the passage and the less the mortality. The average tonnage of the vessels employed in this service during the year was 797, the passage 107 days, the number of souls on board 331, and the deaths 3.6 per cent.; but in the last seventeen ships above referred to, the tonnage was 853, the length of voyage 98 days, the number of souls 317, and the deaths only 1.3 per cent.

5. The number of births on board emigrant ships was 303, of which 152 were males and 151 females.

6. Forty-four ships arrived during the year, landing emigrants at the undermentioned ports, in the following proportions:—

Port.	Ships.	Souls.
Melbourne	28	9146
Geelong	11	3824
Portland	5	1608
Total	44	14578

7. It will be gratifying to your Excellency to remark, that the recommendations of the late Lieutenant Governor, Mr. La Trobe, that a large number of females should be imported in order to check the manifest disproportion in the sexes, consequent on the enormous addition to the male population which resulted from the opening of the Gold Fields in 1851, have been carefully attended to by Her Majesty's Commissioners; and that the number of women, female children, and infants introduced, nearly doubles the number of males. The introduction of single men, except grown sons in large families, has been abandoned.

8. At the commencement of the year it was found necessary to place the three ships *Allison*, *Priscilla*, and *Confiance*, in quarantine, the prevailing diseases being scarlet and typhus fever, and whooping cough.

9. The Surgeons Superintendent have fully maintained their character for efficiency, and have done equal credit to the selection of Her Majesty's Commissioners. In but two instances have any portion of the gratuities been withheld or the certificates modified, on which further employment in the service is obtainable. In each case a special report was furnished for the information of the Lieutenant Governor. It has been my duty lately to submit for your Excellency's consideration, the expediency of increasing the return passage money of these officers, both with a view of retaining experienced Surgeons in the service, and of rendering them more independent whilst in charge of emigrants, by placing them in a position to pay their passages home, without laying themselves under obligations to the masters of the emigrant ships with whom they come out. Since forwarding this recommendation, I find that in the Colony of New South Wales the increase of the allowances of Surgeons Superintendent has been also brought under the notice of that Government by the Immigration Agent in Sydney.

10. The amount of passage money upon each statute adult has increased from £14 17s. 7d. to £17 15s. 7d., a result which was fully anticipated by my predecessor, owing to the general rise in freight to the Colonies. The amount paid upon immigrants who died on the voyage has diminished from 5s. 2d. to 3s. 6d. The amount of gratuities has increased from 19s. to 19s. 10d. upon the number landed alive. The total cost of conveyance and superintendence per statute adult was therefore greater in 1853 than in 1852 by £2 17s. 1d. That this increased rate has been a gradual one, will be seen from the following Table:—

	Statute Adults.	Amount.	Averages.
1851 ..	1750 ..	£18234 15 4 ..	£10 8 4½
1852 ..	12590 ..	187392 1 8 ..	14 17 7
1853 ..	12242 ..	217631 4 5 ..	17 15 7

I regret to state that the rate of passages has now risen to £24 18s., with, I fear, an increasing tendency. The comparative value of the labor imported, measured by the number of statute adults that have arrived in each year, will stand thus:—

	Souls.	Statute Adults.
1852	15477	12590
1853	14578	12242
Decrease ..	899	348

As therefore the number of souls diminished by 899 whilst the statute adults were less by 348 (two children between one and fourteen years of age being counted as one statute adult), it follows that the per centage of persons over the age of fourteen imported in 1853, or in other words, of immediately available labor, was greater than in the preceding year. The limit imposed upon the number of young children in each family, while it has also tended to decrease the rate of mortality on the passage, and to maintain a stricter discipline on board of ships, has been in a great measure the cause of this improvement.

11. Return No. II. gives the sex and age of the Assisted Immigrants ^{Return No. 2.} who have arrived within the year 1853; classed according to their native countries, their proportions stand as follow :—

	Males.	Females.
England	2779	4192
Scotland	1623	2208
Ireland	834	2940
Other Countries	2
Total ..	<u>5236</u>	<u>9342</u>

12. Return No. III. gives the condition of the immigrants introduced, ^{Return No. 3.} classed as before, according to their native countries. It will be observed from this Return that the importation of single females over single males has been equal to upwards of twenty-five per cent. upon the whole immigration of the year.

13. In Return No. IV. will be found the religious persuasions of the ^{Return No. 4.} Assisted Immigrants that have arrived, in the following proportions :—

	Males.	Females.
Church of England	2311	3750
Presbyterians	1590	2207
Wesleyans	405	534
Other Protestants	211	334
Roman Catholics	719	2511
Other Persuasions	6
Total ..	<u>5236</u>	<u>9342</u>

14. Return No. V. shews the occupation of the Assisted Immigrants, ^{Return No. 5.} viz. :—

	Males.	Females.
Agricultural Laborers	2115	
Shepherds	178	
Domestic Servants	15	4135
Mechanics (building)	567	
Other Mechanics	203	1
Tradespeople (food)	26	2
Tradespeople (clothing)	162	215
Married women, children under fourteen, and others not included	1970	4989
Total ..	<u>5236</u>	<u>9342</u>

15. Returns Nos. VI., VII., and VIII., give the state of education of <sup>Returns Nos. 6, 7,
and 8.</sup> the Assisted Immigrants imported in 1853, with reference to their native countries, their religious persuasions, and their ages.

The desire among a superior class of laborers to emigrate is strikingly exemplified in these Tables; the proportion of educated persons who have arrived being very much above the average of previous years. Their numbers will stand thus :—

	Males.	Females.
Persons who can read and write	2894	4947
Persons who can read only	653	1745
Neither read nor write, including children and infants	1689	2650
Total ..	<u>5236</u>	<u>9342</u>

Return No. 9.

16. In Return No. IX. is shewn the number of children under fourteen years of age in the families of the Assisted Immigrants who arrived in 1853. The average in each family was 1·5, being a small per centage under the numbers of the previous year.

Return No. 10.

17. Return No. X. shews the periods of engagement, and the average rates of wages obtained by the immigrants at the ports of Melbourne, Geelong, and Portland, during the year 1853. It will be seen, that, notwithstanding the large addition to the population, the rate of wages of single females has increased on an average from £21 10s. to £23 1s. 9d. This may be attributed more to the increased demand for every description of labor than to the greater attractions of the Gold Fields. The number of public and private buildings that were erected in 1853, within the City of Melbourne and Town of Geelong, and in their immediate vicinities, readily afforded occupation to all the mechanics introduced by the Government; while the increased quantity of land brought under cultivation quickly absorbed the agricultural laborers as they arrived. The demand for single females as domestic servants was never greater; the number of registered marriages which took place in the Colony in the last half of the year amounting to 1515. The daily applications for servants by persons who had unexpectedly acquired wealth at the Gold Fields, and the constant arrival of the ordinary employers of domestic servants, all tended to this result. Nor has the demand decreased at the present moment, nor the rate of wages in the least diminished.

The following statement of the average rate of wages obtained, will shew how gradually progressive this increase has been since the discovery of gold:—

1st Oct., 1851, to 31st May,	Married Couples.	Single Men.	Single Women.
1852	£53 0 0	£38 0 0	£20 0 0
1852	63 0 0	41 0 0	21 10 0
1853	69 17 11	54 11 0	23 1 9

Return No. 11.

18. Return No. XI. is a Table of the nominations in the Colony for passages under the Remittance Regulations of the 29th May, 1852, for the first half of 1853.

Return No. 12.

19. Return No. XII. gives the nominations under the revised Regulations of the 1st June, 1853, for the latter portion of the year. The anticipation of my predecessor as to the working of these Regulations appears to have been realised; the nominations for free passages having increased by about eighty per cent. Thus:—

Under former Regulations.	Nominations.	Amount Remitted.
January to June, 1853	211	£1538
Under revised Regulations.		
July to December, 1853	383	2597

20. In concluding my summary of the Assisted Immigration of the past year, I may be permitted to offer a few remarks, and to refer to the prospects of the Colony, as regards that which is at present going on. To the present date the immigration conducted at the expense of the Government continues undiminished. During the present year 32 ships have arrived, carrying 10,828 souls, which were landed at the various ports of the Colony in the following proportions, viz.:—

	Ships.	Souls.
Melbourne	19	6606
Geelong	10	3169
Portland	3	1053
Total	32	10828

I regret, however, to remark that the character of labor imported is not equal to that which the Colony received in 1853; the majority of the married couples being idle, uneducated, and dirty; and the single women, with but few

exceptions, totally unaccustomed to domestic service. Yet, notwithstanding these defects, no difficulty has been found in obtaining situations for these persons; and it seems that even a larger amount of labor would be readily absorbed were the Colony in a position to introduce it. It is much to be regretted, however, that the selections of the Land and Emigration Commissioners should latterly have been made so largely from the Irish Unions, thereby introducing a description of labor, which, although readily turned to account for want of a better, is not the best which is to be had, or which the Colony is entitled to expect. It appears to me that a great check upon the emigration from Great Britain of a more useful class of industry exists in the Regulations, which insist upon a certain contribution for bedding and mess utensils, which the industrious laborer is, in the majority of instances, quite unable to furnish, but which the over-burdened Unions and parishes willingly pay to be relieved of their paupers. I am disposed to think greater facilities should be given to suitable emigrants, and that when persons coming within the Regulations offer themselves, no money payment whatever should be demanded or taken; but that when the Commissioners relieve a parish of its paupers, they should insist upon a large portion of the expense being borne by the rate-payers.

21. The demand for labor in Melbourne continues unabated; but it is confined in a great measure to male and female domestic servants, mechanics engaged in building, and agricultural laborers.

22. In Geelong the Assistant Immigration Agent reports that the immigrants who arrived in 1853 have been altogether inadequate to meet the demand of the District, and that especially country laborers of both sexes, and male and female domestic servants, are in great request, as well as artisans of all kinds engaged in building. From the results of the previous year he considers that three times the number of Government immigrants would not be more than sufficient to supply the demand; and he calls attention to the fact that comparatively few passenger ships arrive at Geelong, and that the District is consequently almost exclusively dependent upon the labor imported in Government vessels. I append a copy of his Report.

23. In the Portland District the demand for immigrants has been quite equal to the supply. The Assistant Immigration Agent states that agricultural laborers have been much needed, and that the squatters at a distance from the port have been dependent in some instances upon the natives for washing, shearing, and shepherding their sheep. Return No. 13.

24. I would here call attention to the necessity represented by Dr. Findlay for paying greater attention to the selection of emigrants for each particular District. In the Portland District, for instance, the number of single women imported almost exceeds the demand, whilst a larger proportion of married couples could readily find employment. At Geelong, on the other hand, although every class readily obtains engagement, more single women are required.

25. It is necessary also that the attention of the Land and Emigration Commissioners should be directed to sending ships to Portland during the months of July, August, September, and October, so as to reach the Colony during the summer season, when the roads are passable and the emigrants can with facility be removed to the interior.

26. Arrangements have lately been made under the Regulations submitted and approved on the 1st May, for the reshipment of one-half of the emigrants arriving at Portland to Belfast, and it is anticipated that great advantages will be gained by the employers of labor throughout the Port Fairy District by this much needed supply.

27. Some alterations and improvements have recently been made in the form of charter party, by which the expenses of quarantine for an indefinite period, formerly borne by the owners of ships, is now limited to the fourteen lay days allowed for disembarkation, half the passage money being deducted on

such emigrants as may die in quarantine during this period. The former arrangement tended, like all undefined liabilities, to raise the contract price for passages in undue proportion to the risk incurred, and the Commissioners have very properly remodelled this clause of the charter party, to limit the expense of owners to the actual expiry of the contract.

28. During the past year the immigrants arriving in Melbourne and Geelong have all been hired at the respective Depôts on shore, thus preventing the expenditure of time and money to which employers were formerly subjected in proceeding to ships. The Depôt in Melbourne will require some considerable alterations and repairs; the principal one being the erection of a hiring-room for the single women, in which I hope to be able to classify the immigrants according to their callings, which the want of space has hitherto rendered impracticable, and thus to prevent much of the inconvenience to which the public are at present exposed in engaging servants.

The Depôt at Geelong will be sufficient for every purpose for some years to come; but at Portland and Belfast some additions to the present buildings will be necessary to enable the immigrants to be received at once, and hired on shore.

29. The rationing of immigrants in Depôt has been carefully attended to, with the view of reducing the cost to as low a price as possible consistently with the health of the immigrants. The net cost to the Government will be shewn by the following Table, which includes, in some instances, widows and orphans, and persons in ill-health who have been maintained for a lengthened period:—

	Cost per Statute Adult.
Melbourne	3s. 8d.
Geelong	3s. 3 $\frac{3}{4}$ d.
Portland	6s. 0 $\frac{1}{4}$ d.

Unassisted Immigration.

Return No. 14.
Return No. 15.

30. Under the head of Unassisted Immigrants are included all persons who arrive in the Colony by sea, except soldiers and Government Immigrants.

In the Appendix will be found a Return classifying the Unassisted Immigrants during the year 1853, and another of the Emigrants from the various ports of the Colony, during the same period, shewing the following results:—

	Unassisted Immigrants.	Emigrants.
Melbourne	74339	41021
Geelong	3025	1276
All other Ports	370	146
Total	77734	42443

A comparison of this Table with that furnished last year for 1852, during which 79,187 persons arrived, and 31,038 left the Colony, will shew that the tide of immigration had scarcely diminished, whilst the departures had increased by 12,405 souls. The following Table will lead to the conclusion that this had resulted partly from the constant drain on the neighboring Colonies which had taken place in the previous year, and partly from the return of a greater number of persons to the attractions of their homes and farms in Van Diemen's Land and South Australia, more particularly after the first excitement of the gold discoveries had partially subsided.

UNASSISTED IMMIGRANTS.

	1852.	1853.
From the United Kingdom	28973	33032
„ „ Australian Colonies	48253	35834
„ „ Other Countries	1961	8868
Total	79187	77734

EMIGRANTS.

	1852.	1853.
To the United Kingdom	840	3391
„ Australian Colonies	30161	38355
„ Other Countries	37	697
Total	31038	42443

31. These causes continue still in operation; many persons who, in 1853, swelled the number of immigrants, are now returning to the adjacent Colonies, and the balance in favor of Victoria is proportionably smaller than it was when the migration consisted mainly of arrivals. Comparing the first half of the present year with the corresponding half of 1853, the diminution amounts to no less than 8895 souls, as exhibited in the following Table:—

IMMIGRATION.

	Jan. to June. 1853.	Jan. to June. 1854.	Decrease.
United Kingdom	17950	9072	
Australian Colonies	20776	16157	
Foreign Ports	4788	4177	
Total	43514	29406	14108

EMIGRATION.

	Jan. to June. 1853.	Jan. to June. 1854.	Decrease.
United Kingdom	1816	2524	
Australian Colonies	21217	13930	
Foreign Ports	170	1536	
Total	23203	17990	5213
Balance ...	20311	11416	8895

32. It will be satisfactory to observe, although the contribution to the population of the Colony by this means has thus considerably fallen off, that a reaction has now taken place, and that the balance of inter-colonial migration in favor of Victoria during the half-year ending 30th June, 1854, amounted to 2227 persons.

On the other hand, the Voluntary Immigration from the United Kingdom has diminished by 8878 souls, whilst the departures for Europe have largely increased. Many causes have combined to bring about this result. Judging from the analogy of California, it was probable that after the first rush to the newly discovered gold country, a temporary lull might be anticipated, and that in proportion as the emigration diminished in volume, it would increase in the elements essential to Colonial progress. These expectations have, unfortunately, not been realised. The increased demand for labor, and consequent increased rates of wages obtainable at home, which resulted from the unprecedented emigration, both to America and this Colony in 1852 and 1853, have at once checked the tide which would otherwise undoubtedly be flowing to Victoria now, and the present disturbed state of Europe has naturally tended to throw further impediments in the way of emigration. It is remarkable to observe how rapidly these influences have arrested the departure of husbandmen and artisans from Great Britain, notwithstanding the continued attractions of the Colony to these classes. From January to June, 1853, of Voluntary Emigrants 2072 husbandmen and 2244 artisans arrived in the Colony; whilst from January to June, 1854, only 598 agricultural laborers and 1129 artisans were added to our population.

33. At the close of 1852 and during the greater part of 1853, the spontaneous immigration had assumed so gigantic a character that the utmost efforts of the Colony, limited as was then the number of its inhabitants, were required to make room for the new comers; and, as regarded house accommodation especially, serious apprehensions were entertained that it would be wholly insufficient. Very great inconvenience, and in some cases positive suffering, ensued; and to the representations made of these hardships, both in private letters and in public prints, may be traced another cause of the diminution of immigration to our shores.

34. It is to the United Kingdom we must look for any permanent accession to our population; but the question whether this immigration will again attain to its former extent, embraces a variety of circumstances, and a field of speculation upon which it is not my province to enter. I apprehend, however, that, setting other considerations aside, this will depend not so much upon the attractions which the Colony presents (for the masses in England cannot meet the expenses of the passage), as upon the prosperity of individual colonists, pioneers of families now amongst us, and the amounts which they are enabled to remit for the passages of their relatives. It appears from the 13th Report of the Land and Emigration Commissioners, dated in 1853, that the ascertained remittances from America for this purpose during 1852 amounted to £1,404,000, having increased from £460,000 in 1848. A portion of this large sum was no doubt devoted to the outfit and preliminary expenses of the emigrants, but if we estimate these with the passage money at £5 each, the remittances would cover the passages of 280,000 persons. The entire emigration to America for the year amounted to 277,134 souls, so that it would appear that not only was the whole expense borne by the colonists in America, but a balance remained in hand for the payment of emigration during the following year. In Victoria sufficient time has not elapsed to put this system fully to the test; that it is in some degree in operation has been shewn by the extraordinary increase in the amounts remitted through this office during the latter half of 1852, and it is satisfactory to know that this has been steadily increasing up to the present time; the sum remitted from the 1st January to the 30th June, in the present year, amounting to £3167, of which May and June contributed nearly half. This, however, is no evidence of what may and will be done. The usual obstacles to emigration, such as love of home, the dislike to a strange country, the fear of the sea voyage, and the want of means, the Commissioners justly remark, have long since been smoothed away; the moral obstacles have been overcome by the examples of the thousands who have already ventured, and the want of means will be removed by the liberal remittances we may fairly anticipate.

35. The arrangements made for the convenience, health, and safety of passengers to this Colony, during the early part of 1853, appear to have been very defective, and to have been little if at all influenced by the Act passed by the Imperial Parliament. Those clauses which could be applied by the Emigration Officers in Great Britain were stringently put in operation, but no sooner had a vessel put to sea than the provisions of the Act were in many instances systematically set at defiance. The victuals and water were frequently insufficient, and of inferior quality, the sale of spirits was openly carried on, and the grossest irregularities prevailed. Under these circumstances it was found necessary to continue the system of inspecting each ship on arrival, which had been commenced in 1852, and to take legal proceedings against the masters of vessels in no less than seventy cases, the results of which are given in the accompanying Return, No. XVI., which shews the amount of fine inflicted and of compensation awarded in each case. The effect of these proceedings has been most beneficial. Although the rate of passage money has not materially risen, as was apprehended, the class of persons employed as masters of ships has much improved. the cleanliness of vessels has been more carefully attended to, and

the general health of the passengers has correspondingly benefited. In seventy vessels, carrying 3553 passengers, which arrived in the quarter ending 30th June last, only seventeen deaths occurred, a rate of mortality equivalent to about two per cent. per annum, or even less than that of most towns; and not one vessel landed passengers at the Quarantine Station. The number of prosecutions under the Act is also gradually diminishing, and I am happy to state that in only eighteen comparatively unimportant cases has it been found necessary during the present year, up to the 30th June, to take legal steps against the masters of passenger ships.

36. The Colonial Act of Council, 16 Victoria, No. 17, to regulate the conveyance of passengers in cases where the Imperial Act does not apply, has been of great service in checking abuses, and throughout 1853 answered the purpose for which it was framed very effectively. The prosecutions which have taken place under its authority will also be seen in the Return referred to in the last paragraph.

The passenger rate of five shillings each statute adult landed has been duly collected and paid into the Treasury; the amount realised, as shewn in Return No. XVII., being £9895 2s. 6d. This total includes the rate upon all passengers from the Australian Colonies during the year, that upon arrivals from ports east of the Cape of Good Hope to Cape Horn from the 1st July, and that upon passengers from the intermediate countries from the 1st October. Besides the larger amount of revenue thus accruing, these collections are valuable in enabling me to test the accuracy of the Returns of Arrivals.

37. A very large, though I fear not very profitable, addition to our population is now almost daily arriving from China. Up to the 30th June of the present year, no fewer than 2895 male Chinese were landed in Melbourne (their women, it appears, never emigrate), and as rapidly removed to the Gold Fields. Up to the present time but one vessel carrying Chinese passengers has left the port, viz., the brig *Rapid*, for Singapore, in July, with nineteen Chinese, who were returning from the Gold Fields, having met with considerable success, with the expressed intention of chartering a ship to revisit Victoria. The circumstance was duly reported at the time for your Excellency's information.

38. Return No. XVIII. is a statement of the persons, other than Government Immigrants, who were received into Dépôt, and rationed at the expense of the Crown Revenue. They consisted principally of fifty of the Irish Constabulary, who had entered the service of the Colonial Government; of the passengers of the *Earl of Charlemont*, which was wrecked at the Barwon Heads; and of the passengers of the *Sir Fowell Buxton*, which was wrecked on the coast of Brazil, and who were brought on here by the brig *Richard*, chartered by Her Majesty's Consul at Paraiba for that purpose. In each case full Reports were furnished for the information of the Lieutenant Governor.

39. The Houseless Immigrants' Asylums at Batman's Hill and South Yarra, as will be seen from Return No. XIX. A, have accommodated during the year 1853, 1477 persons, and the receipts have amounted to £1974 8s. 9d.

The Houseless Immigrants' Asylums.
Return No. 19.

The necessity for these establishments, which was so severely felt in 1852 and the early part of 1853, has been gradually diminishing up to the present time. In March last, as will be seen from the same Return, marked B, the South Yarra buildings were tenantless, and were consequently closed; and I have lately felt it my duty to recommend to your Excellency that the one at Batman's Hill should also be converted to some other purpose. It was never intended, as was stated in my predecessor's Report of last year, that the accommodation thus afforded should be either eleemosynary or permanent, and the gradual diminution in the receipts has shewn that the Asylums were rapidly acquiring the character of Poor, rather than Lodging Houses. In closing them, therefore, I have recommended that the cases of real destitution left upon the hands of the Government should still be supported in the Government

Depôt, out of the monthly allowance made to me for that purpose. I may here mention, although not coming within the province of my own department, that the Houseless Immigrants' Society have also, for the same reasons, closed their doors to the inmates they have been receiving, and have handed over their buildings to the Government, upon repayment to the subscribers of the amounts raised; the objects of the institution having been fully attained.

Quarantine or Sanitary Station.

40. The Sanitary Station was placed under the charge of the Immigration Agent on the 1st July, 1853.

The situation fixed upon for it in November, 1852, at Point Nepean, having a south frontage to the sea and a northern view of Port Phillip Bay, and covering an extent of about one square mile, of dry sandy soil with occasional patches of rich black loam, protected from the south-westerly gales by the sand hummocks at the rear of the buildings, is one which, in point of position and climate, appears to be admirably adapted for the purpose. The anchorage is convenient and safe; a plentiful supply of wood and water, and a soil capable of growing almost every vegetable and medicinal plant, facilities in procuring fish on the station, and supplies from Melbourne and Geelong, are amongst the advantages which were looked to in its selection. The following buildings, consisting of an Hospital, a Storehouse, and Surgeon's and Storekeeper's Quarters, are in progress, or have been erected at a cost to the Government, up to the end of 1853, of £7760. The expenses of the Sanitary Station have been defrayed from the collections under the Passengers Act, since that enactment came into operation, and the total cost of the establishment for the year ending 30th June, amounted to £14,245 3s. 5d., of which £3552 19s. 5d. was expended for stores, part of which must still remain upon the station.

Return No. 20.

41. Upon the 17th July, under your Excellency's instructions, the supervision of the establishment was transferred to the principal Medical Officer, and the accompanying Returns are therefore made up to that date. Two hundred and one persons have been rationed on the station during this period, composed of Government Immigrants from eleven ships, of whom sixty-five only were infected and under medical treatment; fifty-four were cured, and eleven died, four within twenty-four hours, and one in a few minutes after landing. It appears that only two passenger ships, viz., the *Arabian* and the barque *Ellen*, have been placed in quarantine during the above period, but the latter did not land any of her passengers at the station. The principal infectious diseases were fever and scarlatina.

Returns Nos. 21, 22, and 23.

42. I have further to draw attention to the Returns, marked Nos. XXI., XXII., and XXIII., of Wages and Prices Current in the Colony during the year 1853, compiled from Returns furnished by the Commissioners of Crown Lands in the several Districts, similar Returns from each of the Gold Fields of the Colony during the same period, and likewise in the City of Melbourne. It will be seen that wages have slightly increased during the year, whilst prices have gradually risen to the height they have now attained.

Return No. 24.

43. The last Return which I have the honor of submitting is a statement of the age, occupation, and disposal of 120 single females, introduced into the Colony at the cost of the Fund for Promoting Female Emigration, more generally known as Mr. Sidney Herbert's Society.

I have the honor to be,

Sir,

Your Excellency's most obedient Servant,

EDWARD BELL,

Immigration Agent.

KEY TO APPENDICES.

ASSISTED IMMIGRATION.

- No. I.—Return shewing the Names of the Ships chartered for the Conveyance of Immigrants, which arrived in the Colony of Victoria during the year 1853; the Names of the Surgeons Superintendent; the Length of the Passages; the Number of Births and Deaths which occurred on board; the Number of Immigrants introduced, and the Cost of their conveyance and superintendence.
- No. II.—Return of the Sex and Age of the Assisted Immigrants who arrived in the Colony of Victoria during the year 1853.
- No. III.—Return of the Condition of the Assisted Immigrants who arrived in the Colony of Victoria during the year 1853.
- No. IV.—Return of the Religious Persuasions of the Assisted Immigrants who arrived in the Colony of Victoria during the year 1853.
- No. V.—Return of the Occupation of the Assisted Immigrants who arrived in the Colony of Victoria during the year 1853.
- No. VI.—Return shewing the State of Education of the Assisted Immigrants who arrived in the Colony of Victoria during the year 1853.
- No. VII.—Return shewing the State of Education as compared with the Religious Persuasions of the Assisted Immigrants who arrived in the Colony of Victoria during the year 1853.
- No. VIII.—Return shewing the state of Education as compared with the Age of the Assisted Immigrants who arrived in the Colony of Victoria during the year 1853.
- No. IX.—Return shewing the Number of Children under Fourteen Years of Age in the Families of the Assisted Immigrants who arrived in the Colony of Victoria during the year 1853.
- No. X.—Return shewing the periods of Engagement, and the Average Wages obtained at Melbourne, Geelong, and Portland, by the Assisted Immigrants, introduced in ships chartered by the Colonial Land and Emigration Commissioners, which arrived during the year 1853.
- No. XI.—Return of the Nominations for Passages to Victoria under the Remittance Regulations of 29th May, 1852, during the period from 1st January to 30th June, 1853.
- No. XII.—Return of the Nominations for Passages to Victoria under the Remittance Regulations of 1st June, 1853, during the period from 1st July to 31st December, 1853.
- No. XIII.—Report of the Assistant Emigration Agent at Geelong.

UNASSISTED IMMIGRATION AND EMIGRATION.

- No. XIV.—Return classifying the Unassisted Immigrants who arrived in the Colony of Victoria by Sea during the year 1853.
- No. XV.—Return classifying the Emigrants who departed from the Colony of Victoria by Sea during the year 1853.
- No. XVI.—Return shewing the Prosecutions instituted under the Passengers Acts by the Emigration Officers and Assistant Emigration Officers during the year 1853.
- No. XVII.—Return of the Amounts Collected at the several Ports of the Colony during the year 1853 as a Passenger Rate, under the Act of Council 16 Vic., No. 17, distinguishing the places whence the Immigrants have arrived.
- No. XVIII.—Return of Persons (other than those introduced in Government ships, or in ships chartered by the Committee of the Fund for promoting Female Immigration) who have been received into Government Depôts during the year 1853.

HOUSELESS IMMIGRANTS' ASYLUMS.

- No. XIX.—Return classifying the Persons received into the Houseless Immigrants' Asylums, at Batman's Hill and South Yarra, during the periods 1853, and from 1st January to 31st July, 1854; also shewing the amount of receipts at each Asylum.

SANITARY STATION.

- No. XX.—Return of the Persons who have been placed in Quarantine at the Sanitary Station during the period from 1st July, 1853, to 17th July, 1854.

MISCELLANEOUS.

- No. XXI.—Statement compiled from Returns furnished by the Commissioners of Crown Lands in the Colony of Victoria, shewing the Rates of Wages, the Demand for Labor, and the principal Productions of each District during the year 1853.
- No. XXII.—Return shewing the Prices, Wages, and Miscellaneous Charges current at the various Gold Fields of the Colony during the Month of June, 1854.
- No. XXIII.—Return shewing the Wages, Prices, and Miscellaneous Charges current in Melbourne during the Month of June, 1854.
- No. XXIV.—Return shewing the Age, Occupation, and Disposal of the Single Females introduced into the Colony of Victoria, at the cost of the Fund for promoting Female Emigration, during the year 1853.

RETURN shewing the NAMES of the SHIPS chartered for the Conveyance of Immigrants which arrived in the Colon
 Number of Births and Deaths which occurred on Board, the Number of Immigrant

Number of Vessels.	Name of Vessel.	Tonnage.	Name of Surgeon Superintendent.	Port of Departure.	Date of Departure.	Port of Arrival.	Date of Arrival.	Number of Days on the Voyage.	Number of Births on the Voyage.			Number of Deaths on the Voyage									
									Males.	Females.	Total.	Adults.		Children.		Infants.		Total.			
												Males.	Females.	Males.	Females.	Males.	Females.				
					1852.		1853.														
1	Anne Milne -	564	Henry Ayliffe -	Plymouth -	10 Oct.	Portland	1 Jan.	83	5	-	5	2	-	4	5	3	2	16			
2	Northumbria -	630	Hy. L. O'Hara -	London -	10 Sept.	Melbourne	5 Jan.	117	2	10	12	-	-	2	2	1	3	8			
3	James Brown -	1190	Henry Wilkinson -	Liverpool -	16 Sept.	Geelong	5 Jan.	111	7	7	14	2	2	18	13	4	3	42			
4	Time and Truth -	576	T. M. Girdlestone	Plymouth -	19 Sept.	"	5 Jan.	108	5	1	6	1	-	2	2	-	1	6			
5	Six Sisters -	657	James Hannan -	London -	1 Oct.	"	13 Jan.	104	5	2	7	1	1	2	4	1	3	12			
6	Stebonheath -	1014	James Kilgour -	Plymouth -	7 Oct.	"	18 Jan.	103	1	2	3	-	-	1	1	1	1	4			
7	Allison -	697	Charles Stilwell	Liverpool -	13 Sept.	Melbourne	8 Feb.	148	5	-	5	3	5	3	7	2	1	21			
8	Arabian -	581	W. A. Heise -	"	26 Oct.	"	14 Feb.	111	5	6	11	-	1	4	3	2	-	10			
9	Marian Moore -	1050	J. G. Moir -	"	15 Nov.	"	15 Feb.	92	5	6	11	1	2	2	5	4	5	19			
10	Priscilla -	572	John Carroll -	"	13 Oct.	"	24 Feb.	134	-	4	4	3	9	6	15	3	5	41			
11	Dk. of Richmond	470	R. T. Webber -	London -	20 Oct.	Portland	4 Mar.	135	7	4	11	1	4	4	12	4	3	28			
12	British Empire -	546	Robt. N. Lowe -	"	24 Oct.	Geelong	8 Mar.	135	1	5	6	-	1	2	2	1	1	7			
13	Thames -	858	Jos. L. V. Gregory	Liverpool -	3 Nov.	Melbourne	10 Mar.	127	3	8	11	-	1	3	6	2	3	15			
14	Hope -	377	Jacob Wilkins -	London -	8 Nov.	"	18 Mar.	130	4	4	8	-	1	-	-	2	-	3			
15	Eliza -	682	Rupert Pincott -	Plymouth -	30 Nov.	Portland	9 Apr.	130	5	6	11	3	7	9	10	5	7	41			
16	Confiance -	927	R. S. Jeffs -	Liverpool -	8 Dec.	Geelong	12 Apr.	125	8	7	15	-	4	10	5	5	3	27			
17	Monteagle -	999	Samuel G. Hayes	Deftford -	21 Dec.	Melbourne	12 Apr.	112	14	8	22	2	4	13	18	12	3	52			
18	Sacramento -	430	Thomas Hardy -	Gravesend -	25 Dec.	"	26 Apr.	122	2	-	2	-	-	1	4	2	-	7			
					1853.																
19	Earl Grey -	571	D. Macosh -	Plymouth -	14 Jan.	"	2 May	108	6	3	9	1	1	3	2	1	1	9			
20	British Queen -	569	R. Jones Hobson	Liverpool -	9 Jan.	"	3 May	114	1	7	8	1	-	1	4	-	2	8			
21	Sea -	760	John G. Sandie -	"	10 Feb.	"	15 May	94	3	2	5	-	-	-	6	1	-	7			
22	Bride -	565	D. J. Williams -	Plymouth -	3 Feb.	"	17 May	103	2	2	4	-	-	-	-	-	-	-			
23	Calliope -	770	James Byrne -	Southampton	3 Feb.	"	18 May	104	7	1	8	-	-	2	1	-	-	3			
24	Derry Castle -	941	George Coward -	Liverpool -	8 Feb.	"	22 May	103	3	1	4	-	2	1	2	1	1	7			
25	Childe Harold -	1124	T. Slater -	"	11 Mar.	Geelong	16 June	97	4	9	13	-	5	6	5	4	6	26			
26	Ghenghis Khan	1306	Edward Pye -	"	25 Mar.	Melbourne	1 July	98	5	8	13	1	2	6	14	5	2	30			
27	Ida -	1157	Robt. E. Allsop	"	25 Mar.	"	12 July	109	10	5	15	1	6	7	7	2	3	26			
28	Harpley -	547	D. J. Roberts -	Southampton	9 April	"	17 July	99	2	1	3	-	-	-	-	1	1	2			
29	Elizabeth -	569	J. R. Trotter -	"	14 April	"	18 July	95	-	4	4	-	-	-	-	-	-	-			
30	Euphemus -	700	Dennis Rock -	Plymouth -	7 April	Geelong	18 July	102	5	4	9	-	-	-	-	3	1	4			
31	Mooltan -	610	Robert Pridie -	Southampton	23 April	"	3 Aug.	102	1	1	2	-	-	-	-	-	2	2			
32	H.M.S. Hercules	1700	Ed. Nolloth, R. N.	Queenstown	14 April	Melbourne	3 Aug.	111	-	1	1	2	3	1	-	-	-	6			
33	Lady Kennaway	583	William Wills -	Southampton	9 May	"	15 Aug.	98	1	2	3	-	-	-	1	1	1	3			
34	Banker's Daughter	1121	Robert Wilson -	Liverpool -	19 May	Geelong	3 Sept.	107	2	8	10	2	-	4	-	-	2	8			
35	Australia -	1028	F. W. Johnson -	"	1 June	Melbourne	20 Sept.	111	4	1	5	2	3	-	1	3	1	10			
36	Oithona -	852	Wm. Donaldson	Southampton	30 June	Portland	2 Oct.	94	1	5	6	-	1	-	1	-	1	3			
37	Charles -	1074	C. Y. Trotter -	Liverpool -	21 June	Melbourne	3 Oct.	104	1	1	2	-	3	1	1	-	-	5			
38	Statesman -	874	Jas. Robertson -	Southampton	14 July	"	5 Oct.	83	1	-	1	-	-	-	-	-	-	-			
39	Argyle -	584	Samuel Knott -	Plymouth -	25 July	"	25 Oct.	92	1	1	2	2	2	1	2	1	1	9			
40	Credenda -	901	Wm. Thomson -	Southampton	7 Aug.	Geelong	1 Nov.	86	1	-	1	-	2	1	-	-	-	3			
41	Australia -	1170	Charles Ferraby	Liverpool -	22 Aug.	Melbourne	18 Nov.	88	3	-	3	1	1	2	2	2	-	8			
42	Pekin -	562	John Spencer -	Southampton	19 Aug.	"	29 Nov.	102	2	1	3	-	-	-	-	1	-	1			
43	New Zealander	1129	J. G. Moir -	Liverpool -	23 Aug.	Portland	30 Nov.	99	2	3	5	1	4	1	1	-	-	7			
44	Bermoudsey -	507	Osborne Johnson	Plymouth -	2 Sept.	Melbourne	5 Dec.	94	-	-	-	-	-	-	-	-	-	-			
	TOTALS -	-	-	-	-	-	-	-	152	151	303	33	77	123	164	80	69	54			
	AVERAGES -	797						107.3													3.6

Immigration Office,
 Melbourne, 12th August, 1854.

I.

of Victoria during the year 1853, the Names of the Surgeons Superintendent, the Length of the Passages, the introduced, and the Cost of their Conveyance and Superintendence.

Number of Immigrants introduced.						Total Souls.	Total Statute Adults.	Contract Price per Statute Adult.	Amount of Passage Money paid upon Immigrants landed alive.	Amount of Half Passage Money paid upon Immigrants who Died on the Voyage.	Amount of Gratuities to Surgeons, Officers, Constables, and Others.	Total Cost of Conveyance and Superintendence.
Adults.		Children.		Infants.								
Males.	Females.	Males.	Females.	Males.	Females.			£ s. d.	£ s. d.	£ s. d.	£ s. d.	£ s. d.
70	93	40	49	8	6	266	207½	14 19 0	3102 2 6	48 11 9	221 4 0	3371 18 3
64	113	33	38	5	10	263	212½	16 2 0	3421 5 0	16 2 0	219 6 0	3656 13 0
122	186	65	68	10	12	463	374½	15 19 0	5973 5 6	155 10 3	283 12 0	6412 7 9
63	112	30	32	10	6	253	206	16 17 3	3473 13 6	25 5 10	200 9 0	3699 8 4
72	79	46	62	10	4	273	205	15 2 6	3100 12 6	37 16 3	220 2 0	3358 10 9
77	166	50	56	8	7	364	296	15 5 6	4521 8 0	7 12 9	291 16 0	4820 16 9
96	100	60	41	7	1	305	246½	15 19 0	3931 13 6	103 13 6	92 0 0	4127 7 0
67	126	36	39	11	13	292	230½	15 17 6	3659 3 9	35 14 4	239 8 0	3934 6 1
129	199	54	82	10	17	491	396	15 15 8	6250 4 0	51 5 11	343 4 0	6644 13 11
82	101	37	37	1	3	261	220	15 14 0	3454 0 0	176 12 6	214 0 0	3844 12 6
60	63	33	39	7	6	208	159	15 18 9	2534 1 3	103 11 10	171 0 0	2808 13 1
44	148	23	24	5	5	249	215½	15 15 7	3400 8 2	23 13 4	207 17 0	3631 18 6
67	224	35	45	9	11	391	331	15 18 3	5267 0 9	43 15 2	318 14 0	5629 9 11
55	113	25	23	5	7	228	192	15 19 6	3067 4 0	7 19 9	153 12 0	3233 15 9
89	115	45	64	9	7	329	258½	15 19 9	4132 15 4	155 17 6	266 6 0	4554 12 10
104	136	76	74	15	11	416	315	15 16 9	4988 16 3	91 1 3	369 16 0	5449 13 6
107	234	54	73	13	14	495	404½	15 13 7	6342 4 5	168 11 0	337 0 0	6847 15 5
49	104	37	34	4	8	236	188½	15 8 10	2910 15 1	19 6 0	181 4 0	3111 5 1
101	123	26	28	5	5	288	251	15 17 6	3984 12 6	35 14 4	274 8 0	4294 14 10
69	139	34	36	4	11	293	243	15 18 3	3866 14 9	27 16 11	240 2 0	4134 13 8
84	167	42	70	10	7	380	307	19 9 6	5978 16 6	29 4 3	308 0 0	6316 0 9
28	182	6	17	4	4	241	221½	18 19 7	4203 17 8	- - -	202 14 0	4406 11 8
92	157	53	60	12	6	380	305½	16 19 5	5184 11 9	12 14 6	387 0 0	5584 6 3
57	273	21	27	6	7	391	254	20 18 6	7407 9 0	36 12 4	392 2 6	7836 3 10
121	170	53	67	13	17	441	351	22 7 6	7853 12 6	117 9 4	355 14 0	8326 15 10
143	214	52	89	6	17	521	427½	21 19 6	9394 6 3	142 16 9	357 3 6	9894 6 6
116	190	68	62	17	12	465	371	22 19 6	8523 14 6	160 16 6	341 0 0	9025 11 0
46	162	26	29	2	3	268	235½	23 0 0	5416 10 0	- - -	219 4 0	5635 14 0
55	140	21	34	4	8	262	222½	22 8 9	4992 6 10	- - -	221 8 0	5213 14 10
78	142	25	37	6	8	296	251	23 8 0	5873 8 0	- - -	305 8 0	6178 16 0
52	166	17	21	3	7	266	237	21 14 6	5148 16 6	- - -	226 4 0	5375 0 6
68	70	26	17	1	1	183	159½	4 10 0	717 15 0	12 7 6	501 0 0	1331 2 6
51	173	14	28	3	4	273	245	19 6 4	4732 11 8	4 16 7	241 19 0	4979 7 3
95	230	39	72	8	17	461	380½	19 1 9	7262 15 10	38 3 6	348 4 0	7649 3 4
67	244	26	25	6	2	370	336½	17 18 9	6035 19 4	49 6 6	321 0 0	6406 5 10
100	151	34	46	2	7	340	291	19 9 9	5670 17 3	14 12 3	282 0 0	5967 9 6
83	243	26	52	2	6	412	365	18 19 0	6916 15 0	37 18 0	352 8 0	7307 1 0
34	232	8	12	1	-	287	276	19 0 0	5244 0 0	- - -	241 18 0	5485 18 0
45	148	14	27	2	3	239	213½	17 16 8	3807 8 4	49 0 10	212 6 0	4068 15 2
65	232	11	26	4	4	342	315½	17 5 8	5452 17 10	21 12 1	349 16 0	5824 5 11
118	243	42	60	4	4	471	412	16 14 8	6894 2 8	33 9 4	380 8 0	7308 0 0
42	160	12	17	4	2	237	216½	16 17 6	3653 8 9	- - -	230 12 0	3884 0 9
138	201	53	59	6	8	465	395	17 7 6	6863 2 6	52 2 6	365 4 0	7280 9 0
44	138	15	21	2	3	223	200	15 2 0	3020 0 0	- - -	175 19 0	3195 19 0
3,409	7,102	1,543	1,919	284	321	14,578	12,242	- - -	217,631 4 5	2,148 14 11	12,168 6 0	231,948 5 4
								Upon each Statute Adult landed alive :				
								17 9 9	17 15 7	0 3 6	0 19 10	18 18 11

EDWARD BELL,
Immigration Agent.

No. II.

RETURN of the SEX and AGE of the ASSISTED IMMIGRANTS who arrived in the Colony of Victoria during the year 1853.

NATIVE COUNTRY.	SEX AND AGE.												GENERAL TOTAL.		GRAND TOTAL.
	45 years and upwards.		21 and under 45 years.		14 and under 21 years.		7 and under 14 years.		1 and under 7 years.		Infants.		Males.	Females.	
	Males.	Females.	Males.	Females.	Males.	Females.	Males.	Females.	Males.	Females.	Males.	Females.			
England and Wales	70	83	1471	2161	212	738	339	406	517	624	170	180	2779	4192	6971
Scotland	80	82	731	1037	215	431	256	280	263	287	78	91	1623	2208	3831
Ireland	16	26	498	1537	116	1005	90	167	78	155	36	50	834	2940	3774
Other Countries	2	2	2
TOTAL	166	191	2700	4737	543	2174	685	853	858	1066	284	321	5236	9342	14,578

Immigration Office,
Melbourne, 12th August, 1854.

EDWARD BELL,
Immigration Agent.

No. III.

RETURN of the CONDITION of the ASSISTED IMMIGRANTS who arrived in the Colony of Victoria during the year 1853.

NATIVE COUNTRY.	CONDITION.										GENERAL TOTAL.		GRAND TOTAL.
	Married Adults.		Single Adults.		Children.		Males.	Females.	Males.	Females.			
	Males.	Females.	Males.	Females.	Males.	Females.							
England and Wales	1504	1499	249	1483	1036	1210	2779	4192	6971				
Scotland	678	667	348	883	597	658	1623	2208	3831				
Ireland	433	431	197	2137	204	372	834	2940	3774				
Other Countries	2	2	2				
TOTAL	2615	2597	794	4505	1827	2240	5236	9342	14,578				

Immigration Office,
Melbourne, 12th August, 1854.

EDWARD BELL,
Immigration Agent.

No. IV.

RETURN of the RELIGIOUS PERSUASIONS of the ASSISTED IMMIGRANTS who arrived in the Colony of Victoria during the year 1853.

NATIVE COUNTRY.	RELIGIOUS PERSUASIONS.												GENERAL TOTAL.		GRAND TOTAL.
	Members of the Church of England.		Presbyterians.		Wesleyan Methodists.		Other Protestants.		Roman Catholics.		Persons of other persuasions.		Males.	Females.	
	Males.	Females.	Males.	Females.	Males.	Females.	Males.	Females.	Males.	Females.	Males.	Females.			
England and Wales	2140	3229	21	50	388	513	203	311	27	83	...	6	2779	4192	6971
Scotland	35	44	1496	2031	10	11	8	22	74	100	1623	2208	3831
Ireland	136	475	73	126	7	10	...	1	618	2328	834	2940	3774
Other Countries	...	2	2	2
TOTAL	2311	3750	1590	2207	405	534	211	334	719	2511	...	6	5236	9342	14,578

Immigration Office,
Melbourne, 12th August, 1854.

EDWARD BELL,
Immigration Agent.

No. V.

RETURN of the OCCUPATION of the ASSISTED IMMIGRANTS who arrived in the Colony of Victoria during the year 1853.

NATIVE COUNTRY.	OCCUPATION.												GENERAL TOTAL.		GRAND TOTAL.
	Number of Agricultural Laborers.	Number of Shepherds and Herdsmen.	Number of Domestic Servants.		Number of Mechanics engaged in erecting buildings, or in obtaining or preparing building materials.	Number of Tradespeople engaged in preparing or selling articles of food, or selling articles of clothing.		Number of Tradespeople engaged in making or repairing articles of clothing.		Number of other Mechanics.	Number of others not included in the foregoing columns.		Males.	Females.	
			Males.	Females.		Males.	Females.	Males.	Females.		Males.	Females.			
England and Wales	931	27	6	1282	432	13	2	122	141	147	...	1101	2767	4192	6971
Scotland	645	139	6	830	105	6	...	38	22	51	1	633	1355	2208	3831
Ireland	539	12	3	2023	30	7	...	2	51	5	...	236	866	2940	3774
Other Countries	1	1	2	2
TOTAL	2115	178	15	4135	567	26	2	162	215	203	1	1970	4989	9342	14,578

Immigration Office,
Melbourne, 12th August, 1854.

EDWARD BELL,
Immigration Agent.

* Includes all Male Children under 14.
† Includes all Married Women, and Female Children under 14.

No. VI.

RETURN shewing the State of EDUCATION of the ASSISTED IMMIGRANTS who arrived in the Colony of Victoria during the year 1853.

NATIVE COUNTRY.	EDUCATION.						GENERAL TOTAL.		GRAND TOTAL.
	Persons who can Read and Write.		Persons who can Read only.		Persons who can neither Read nor Write.*		Males.	Females.	
	Males.	Females.	Males.	Females.	Males.	Females.			
England and Wales	1622	2666	317	553	840	973	2779	4192	6971
Scotland. . . .	807	1064	199	341	617	803	1623	2208	3831
Ireland	465	1215	137	851	232	874	834	2940	3774
Other Countries	2	2	2
TOTAL. . .	2894	4947	653	1745	1689	2650	5236	9342	14578

* Includes Children and Infants.

EDWARD BELL,
Immigration Agent.

Immigration Office,
Melbourne, 12th August, 1854.

No. VII.

RETURN shewing the State of EDUCATION as compared with the RELIGIOUS PERSUASIONS of the ASSISTED IMMIGRANTS who arrived in the Colony of Victoria during the year 1853.

STATE OF EDUCATION.	RELIGIOUS PERSUASIONS.						TOTAL.
	Members of the Church of England	Presbyterians.	Wesleyan Methodists.	Other Protestants.	Roman Catholics.	Other Persuasions.	
Persons who can Read and Write.	3788	1899	543	345	1262	4	7841
Persons who can Read only . .	762	553	144	73	866	...	2398
Neither Read nor Write . . .	1511	1345	252	127	1102	2	4339
TOTAL.	6061	3797	939	545	3230	6	14578

EDWARD BELL,
Immigration Agent.

Immigration Office,
Melbourne, 12th August, 1854.

No. VIII.

RETURN shewing the STATE of EDUCATION as compared with the AGE of the ASSISTED IMMIGRANTS who arrived in the Colony of Victoria during the year 1853.

STATE OF EDUCATION.	AGE.						TOTAL.
	45 years and upwards.	21 and under 45 years.	14 and under 21 years.	7 and under 14 years.	1 and under 7 years.	Infants.	
Persons who can Read and Write	212	5376	1817	430	6	...	7841
Persons who can Read only .	33	1137	497	568	163	...	2398
Neither Read nor Write . .	112	924	403	540	1755	605	4339
TOTAL	357	7437	2717	1538	1924	605	14,578

EDWARD BELL,
Immigration Agent.

Immigration Office,
Melbourne, 12th August, 1854.

No. IX.

RETURN shewing the NUMBER of CHILDREN under Fourteen Years of Age, in the Families of the ASSISTED IMMIGRANTS, who arrived in the Colony of Victoria during the year 1853.

NATIVE COUNTRY.	Number of Married Couples without Children.	NUMBER OF FAMILIES containing							Total Number of Families.	Total Number of Children under 14 years of age.
		One Child.	Two Children.	Three Children.	Four Children.	Five Children.	Six Children.	Seven Children.		
England and Wales	559	347	270	190	130	41	9	...	1546	2236
Scotland . . .	192	178	149	97	75	28	8	...	727	1255
Ireland	195	98	64	48	32	12	3	...	452	576
Other Countries
TOTAL	946	623	483	335	237	81	20	...	2725	4067

EDWARD BELL,
Immigration Agent.

Immigration Office,
Melbourne, 12th August, 1854.

No. X.

RETURN shewing the PERIODS of ENGAGEMENT and the AVERAGE WAGES obtained at MELBOURNE, GEELONG, and PORTLAND, by the ASSISTED IMMIGRANTS, introduced in Ships chartered by the COLONIAL LAND and EMIGRATION COMMISSIONERS, which arrived during the year 1853.

Port OF ARRIVAL.	NUMBER OF FAMILIES.					NUMBER OF SINGLE MEN.					NUMBER OF SINGLE WOMEN.											
	Did not hire.	Hired without reporting particulars.	Three months and less.	Six months and less.	Above six months.	Average Wages per annum, with Rations.	£ s. d.	Did not hire.	Hired without reporting particulars.	Hired with Parents.	Three months and less.	Six months and less.	Above six months.	Average Wages per annum, with Rations.	£ s. d.	Did not hire.	Hired without reporting particulars.	Hired with Parents.	Three months and less.	Six months and less.	Above six months.	Average Wages per annum, with Rations.
Melbourne . . .	808	11	475	133	154	77 14 0	274	53	35	128	23	33	51 10 0	885	1	32	2149	127	15	24 18 0		
Geelong . . .	528	13	102	90	49	68 16 0	68	2	27	24	11	1	64 14 3	228	5	19	668	82	5	23 2 3		
Portland . . .	142	4	35	73	108	63 3 9	52	4	11	12	20	16	47 8 9	108	7	7	70	71	26	21 5 1		
TOTAL .	1478	28	612	296	311	69 17 11	394	59	73	164	54	50	54 11 0	1221	13	58	2887	280	46	23 1 9		

EDWARD BELL,
Immigration Agent.

Immigration Office,
Melbourne, 12th August, 1854.

No. XI.

RETURN of the NOMINATIONS for PASSAGES to Victoria, under the Remittance Regulations of 29th May, 1852, during the period from the 1st January to the 30th June, 1853.

A.

NOMINATIONS FOR ASSISTED PASSAGES.

In what Country living.	Number of Souls.	Number of Statute Adults.	Amount deposited to assist in paying the expense of Passage.	Amount deposited for Outfit of Immigrants.	TOTAL AMOUNT.
England and Wales .	5	5	£ s. d. 104 0 0	£ s. d. 14 0 0	£ s. d. 118 0 0
Scotland					
Ireland	2	2	40 0 0	40 0 0
TOTAL	7	7	144 0 0	14 0 0	158 0 0

B.

NOMINATIONS FOR FREE PASSAGES.

In what Country living.	Number of Souls.	Number of Statute Adults.	Amount deposited to secure Passages.	Amount deposited for Outfit of Immigrants.	TOTAL AMOUNT.
England and Wales .	71	61	£ s. d. 382 0 0	£ s. d. 74 0 0	£ s. d. 456 0 0
Scotland	26	23	156 0 0	10 0 0	166 0 0
Ireland	107	93½	606 0 0	152 0 0	758 0 0
TOTAL	204	177½	1144 0 0	236 0 0	1380 0 0

EDWARD BELL,
Immigration Agent.

Immigration Office,
Melbourne, 12th August, 1854.

No. XII.

RETURN of the NOMINATIONS for PASSAGES to Victoria, under the Remittance Regulations of 1st June, 1853, during the period from 1st July to 31st December, 1853.

A.

NOMINATIONS FOR ASSISTED PASSAGES.

In what Country living.	Number of Souls.	Number of Statute Adults.	Amount deposited to assist in paying the expense of Passage.	Amount deposited for Outfit of Immigrants.	TOTAL AMOUNT.
England and Wales.	1	1	£ s. d. 8 0 0	£ s. d.	£ s. d. 8 0 0
Scotland	1	$\frac{1}{2}$	10 0 0	10 0 0
Ireland	6	6	123 0 0	17 0 0	140 0 0
TOTAL	8	$7\frac{1}{2}$	141 0 0	17 0 0	158 0 0

B.

NOMINATIONS FOR FREE PASSAGES.

In what Country living.	Number of Souls.	Number of Statute Adults.	Amount deposited to secure Passages.	Amount deposited for Outfit of Immigrants.	TOTAL AMOUNT.
England and Wales .	108	$81\frac{1}{2}$	£ s. d. 472 0 0	£ s. d. 235 0 0	£ s. d. 707 0 0
Scotland	54	48	268 0 0	65 0 0	333 0 0
Ireland	213	174	996 0 0	403 0 0	1399 0 0
TOTAL	375	$303\frac{1}{2}$	1736 0 0	703 0 0	2439 0 0

EDWARD BELL,
Immigration Agent.

Immigration Office,
Melbourne, 12th August, 1854.

No. XIII.

[COPY.]

Immigration Office,
Geelong, 5th January, 1854.

SIR,

With reference to your letter of December 19th, No. 491.53.1629, I have the honor to acquaint you that the number of Immigrants arrived during the year 1853 has been altogether inadequate to meet the demand of this district.

2. Wages have risen during this period even above their former standard, and daily applications are made at this Depôt for every description of country labor, as well as for female farm servants. Town servants are also in great request, such as grooms, drivers, gardeners, house-servants, cooks, laundresses, &c.

3. Bricklayers, masons, plasterers, carpenters, and in general all artisans engaged in the building trades, are also in great demand. Tailors, shoemakers, and in general those artisans whose work enters into competition with articles imported from England, are not in so much demand.

4. From the demand of the late year it appears probable that three times the number of Immigrants would meet with good employment. It is to be remarked that comparatively few private passenger vessels arrive at this port, consequently the district is almost exclusively dependent on the Government vessels for the supply of labor.

5. I would suggest that as far as possible the Immigrants sent to this port should consist of single women, and of families with only few children. It would be desirable to select those single women, principally, who are accustomed to farming occupations in the country districts; but a large number of thorough servants might also be taken with great advantage from the towns, as the demand for good cooks and laundresses is very great. No difficulty has been experienced, however, in procuring occupation for any Immigrants at this Depôt, although not quite suited to the wishes of the employer, provided only that they be able and willing to work.

6. The eleven vessels despatched to this port during the past year have arrived in good condition. The reports on each ship contain all the suggestions which it has been deemed advisable to offer as to the method of conducting this branch of the public service.

I have the honor to be,

Sir,

Your most obedient servant,

(Signed)

CHAS. EDW. STRUTT,

Assistant Immigration Agent.

RETURN classifying the UNASSISTED IMMIGRANTS who arrived in the

MONTH.	PORT OF ARRIVAL.	PLACE OF																	
		UNITED KINGDOM.						NEW SOUTH WALES.						VAN DIEMEN'S LAND.					
		Adults.		Children.		Infants.		Adults.		Children.		Infants.		Adults.		Children.		Infants.	
		Males.	Females.	Males.	Females.	Males.	Females.	Males.	Females.	Males.	Females.	Males.	Females.	Males.	Females.	Males.	Females.	Males.	Females.
JANUARY	Melbourne	2,520	902	459	378	78	80	480	54	25	5	6	1	912	130	40	27	2	2
	Geelong	9	1	-	1	-	-	20	5	3	3	-	-	66	12	12	10	2	2
FEBRUARY	Port Albert	-	-	-	-	-	-	-	-	-	-	-	-	15	1	-	-	-	-
	Melbourne	1,238	481	252	201	47	35	551	76	24	15	4	-	860	151	46	22	8	3
MARCH	Geelong	1	1	1	1	1	-	66	8	14	3	-	-	33	9	4	-	-	-
	Port Fairy	-	-	-	-	-	-	3	-	1	-	-	-	-	-	-	-	-	-
APRIL	Melbourne	1,321	527	269	251	52	44	999	117	41	31	2	-	1,026	158	61	52	3	4
	Geelong	22	10	5	4	-	-	24	13	3	4	1	-	68	8	6	4	-	-
MAY	Portland	9	8	2	4	-	-	1	-	-	-	-	-	-	-	-	-	-	-
	Port Albert	-	-	-	-	-	-	6	-	-	-	-	-	18	-	-	-	-	-
JUNE	Melbourne	2,985	1,133	492	422	79	55	1,062	139	38	32	6	4	1,078	153	41	52	2	-
	Geelong	-	-	-	-	-	-	52	3	3	4	-	-	23	3	-	-	-	-
JULY	Warrnambool	-	-	-	-	-	-	1	1	2	2	1	-	-	-	-	-	-	-
	Melbourne	1,954	474	250	200	34	36	1,111	112	51	20	-	-	582	94	34	29	1	-
AUGUST	Geelong	4	1	1	1	-	-	25	10	4	4	1	-	17	1	1	1	-	-
	Port Albert	-	-	-	-	-	-	12	7	2	3	-	-	10	4	1	-	-	-
SEPTEMBER	Melbourne	522	151	55	37	11	5	1,033	69	24	13	-	-	487	85	19	10	2	-
	Geelong	46	16	11	13	2	2	11	7	4	4	-	-	18	11	5	8	1	-
OCTOBER	Portland	-	-	-	-	-	-	-	-	-	-	-	-	9	1	-	4	-	-
	Port Fairy	-	-	-	-	-	-	1	-	-	-	-	-	-	-	-	-	-	-
NOVEMBER	Port Albert	-	-	-	-	-	-	8	-	-	-	-	-	12	-	-	-	-	-
	Melbourne	1,845	583	284	219	43	41	545	51	22	7	1	-	405	74	27	19	-	-
DECEMBER	Geelong	260	74	54	32	4	5	4	1	-	-	-	-	24	7	1	3	-	1
	Portland	-	-	-	-	-	-	-	-	-	-	-	-	8	3	1	-	-	-
TOTAL	Port Fairy	-	-	-	-	-	-	4	4	1	1	-	-	-	-	-	-	-	-
	Port Albert	-	-	-	-	-	-	-	-	-	-	-	-	3	2	1	2	-	-
AUGUST	Melbourne	3,133	956	367	321	97	31	597	110	36	24	6	1	473	77	26	27	2	-
	Geelong	11	3	-	-	-	-	13	9	3	5	-	-	11	3	3	2	-	-
SEPTEMBER	Portland	15	1	-	-	-	-	-	-	-	-	-	-	2	4	-	-	-	-
	Port Albert	-	-	-	-	-	-	-	-	-	-	-	-	3	1	-	-	-	-
OCTOBER	Melbourne	1,238	448	164	144	47	22	793	159	44	39	10	3	594	122	48	44	9	3
	Geelong	20	4	1	2	1	-	98	5	1	1	1	-	188	32	7	8	2	-
NOVEMBER	Portland	7	1	-	-	-	-	-	-	-	-	-	-	-	-	-	-	-	-
	Port Fairy	-	-	-	-	-	-	1	2	-	1	-	-	-	-	-	-	-	-
DECEMBER	Port Albert	-	-	-	-	-	-	-	-	-	-	-	-	1	-	-	-	-	-
	Melbourne	1,396	417	152	136	37	18	837	123	25	13	4	1	715	117	44	33	6	5
TOTAL	Geelong	9	4	2	2	-	-	98	24	18	7	-	1	98	27	9	12	1	2
	Port Fairy	-	-	-	-	-	-	-	-	-	-	-	-	5	-	-	-	-	-
NOVEMBER	Port Albert	-	-	-	-	-	-	-	-	-	-	-	-	7	6	2	-	-	-
	Melbourne	865	253	79	65	10	11	787	191	55	72	9	1	502	124	37	19	6	-
DECEMBER	Geelong	14	2	1	-	-	-	26	12	6	3	1	1	130	31	5	4	-	-
	Portland	-	-	-	-	-	-	3	3	-	1	-	-	-	-	-	-	-	-
TOTAL	Port Fairy	-	-	-	-	-	-	8	7	5	7	-	-	-	-	-	-	-	-
	Port Albert	-	-	-	-	-	-	-	-	-	-	-	-	14	5	1	2	-	-
TOTAL	Melbourne	436	173	61	51	6	2	466	160	34	41	8	1	402	101	44	35	6	5
	Geelong	65	32	19	26	1	2	15	11	2	6	-	-	189	27	11	3	-	-
TOTAL	Portland	-	-	-	-	-	-	-	-	-	-	-	-	4	8	7	3	-	-
	Warrnambool	-	-	-	-	-	-	3	3	-	-	-	-	-	-	-	-	-	-
TOTAL	Port Albert	-	-	-	-	-	-	-	-	-	-	-	-	10	2	-	-	-	-
	TOTAL ...	19,945	6,656	2,981	2,511	550	389	9,764	1,496	491	371	61	15	9,022	1,594	544	435	53	27

Immigration Office,
Melbourne, 12th August, 1854.

XIV.

Colony of Victoria by Sea during the year 1853.

DEPARTURE.															TOTALS.						TOTAL SOULS.			
SOUTH AND WEST AUSTRALIA.						NEW ZEALAND AND S. SEAS.						FOREIGN PORTS.						TOTALS.						
Adults.		Children.		Infants.		Adults.		Children.		Infants.		Adults.		Children.		Infants.		Adults.		Children.		Infants.		
Males.	Females.	Males.	Females.	Males.	Females.	Males.	Females.	Males.	Females.	Males.	Females.	Males.	Females.	Males.	Females.	Males.	Females.	Males.	Females.	Males.		Females.	Males.	Females.
777	187	104	58	6	3	3	-	-	-	-	-	147	6	6	5	-	-	4,839	1,279	634	473	92	86	
2	-	-	-	-	-	-	-	-	-	-	-	-	-	-	-	-	-	97	18	15	14	2	2	
-	-	-	-	-	-	-	-	-	-	-	-	-	-	-	-	-	-	15	1	-	-	-	-	
943	117	69	24	6	2	12	5	1	1	1	1	682	52	11	5	-	-	4,286	882	403	268	66	40	
-	-	-	-	-	-	-	-	-	-	-	-	-	-	-	-	-	-	100	18	19	4	1	-	
-	-	-	-	-	-	-	-	-	-	-	-	-	-	-	-	-	-	3	-	1	-	-	-	
1,513	219	126	78	6	3	45	7	8	7	-	-	537	58	22	23	4	1	5,441	1,086	527	442	67	52	
-	-	-	-	-	-	-	-	-	-	-	-	55	20	23	4	-	-	170	51	37	16	1	-	
3	1	-	-	-	-	-	-	-	-	-	-	-	-	-	-	-	-	13	9	2	4	-	-	
-	-	-	-	-	-	-	-	-	-	-	-	-	-	-	-	-	-	24	-	-	-	-	-	
1,430	269	120	75	15	14	85	17	10	7	-	-	1,060	145	57	38	6	4	7,700	1,856	758	626	108	77	
-	-	-	-	-	-	-	-	-	-	-	-	3	3	2	4	-	-	78	9	5	8	-	-	
-	-	-	-	-	-	-	-	-	-	-	-	-	-	-	-	-	-	1	1	2	2	1	-	
505	106	49	21	-	-	19	5	2	1	-	-	492	42	21	14	-	-	4,663	833	407	285	35	36	
-	-	-	-	-	-	-	-	-	-	-	-	-	-	-	-	-	-	46	12	6	6	1	-	
-	-	-	-	-	-	-	-	-	-	-	-	-	-	-	-	-	-	22	11	3	3	-	-	
150	44	17	8	2	1	58	5	3	4	-	-	1,099	51	21	15	-	-	3,349	405	139	87	15	6	
-	-	-	-	-	-	35	5	4	7	2	2	47	3	-	-	-	-	157	42	24	32	5	4	
9	4	-	-	-	-	-	-	-	-	-	-	-	-	-	-	-	-	18	5	-	4	-	-	
-	-	-	-	-	-	-	-	-	-	-	-	-	-	-	-	-	-	1	-	-	-	-	-	
-	-	-	-	-	-	-	-	-	-	-	-	-	-	-	-	-	-	20	-	-	-	-	-	
250	71	29	25	3	1	39	4	9	4	-	-	370	36	18	10	-	-	3,454	819	389	284	47	42	
-	-	-	-	-	-	-	-	-	-	-	-	-	-	-	-	-	-	288	82	55	35	4	6	
-	-	-	-	-	-	-	-	-	-	-	-	-	-	-	-	-	-	8	3	1	-	-	-	
-	-	-	-	-	-	-	-	-	-	-	-	-	-	-	-	-	-	4	4	1	1	-	-	
-	-	-	-	-	-	-	-	-	-	-	-	-	-	-	-	-	-	3	2	1	2	-	-	
297	66	51	34	1	3	29	3	1	5	-	-	1,276	130	55	72	7	1	5,805	1,342	536	483	113	36	
-	-	-	-	-	-	-	-	-	-	-	-	-	-	-	-	-	-	35	15	6	7	-	-	
-	-	-	-	-	-	-	-	-	-	-	-	-	-	-	-	-	-	17	5	-	-	-	-	
-	-	-	-	-	-	-	-	-	-	-	-	-	-	-	-	-	-	3	1	-	-	-	-	
483	95	34	27	7	5	48	7	6	3	1	-	549	68	15	20	1	-	3,705	899	311	277	75	33	
-	-	-	-	-	-	-	-	-	-	-	-	-	-	-	-	-	-	306	41	9	11	4	-	
-	-	-	-	-	-	-	-	-	-	-	-	-	-	-	-	-	-	7	1	-	-	-	-	
-	-	-	-	-	-	-	-	-	-	-	-	-	-	-	-	-	-	1	2	-	1	-	-	
-	-	-	-	-	-	-	-	-	-	-	-	-	-	-	-	-	-	1	-	-	-	-	-	
832	193	85	82	6	1	70	16	17	14	3	-	325	63	39	27	3	2	4,175	929	362	305	59	27	
-	-	-	-	-	-	24	7	4	2	1	1	-	-	-	-	-	-	229	62	33	23	2	4	
-	-	-	-	-	-	-	-	-	-	-	-	-	-	-	-	-	-	5	-	-	-	-	-	
-	-	-	-	-	-	-	-	-	-	-	-	-	-	-	-	-	-	7	6	2	-	-	-	
453	124	57	30	14	4	28	4	1	-	-	-	390	56	21	32	1	8	3,025	752	250	218	40	24	
-	-	-	-	-	-	-	-	-	-	-	-	66	5	2	-	-	-	236	50	14	7	1	1	
9	5	1	2	-	-	-	-	-	-	-	-	-	-	-	-	-	-	12	8	1	3	-	-	
-	-	-	-	-	-	-	-	-	-	-	-	-	-	-	-	-	-	8	7	5	7	-	-	
-	-	-	-	-	-	-	-	-	-	-	-	-	-	-	-	-	-	14	5	1	2	-	-	
418	144	57	31	9	5	46	16	13	13	-	1	317	42	13	13	1	4	2,085	636	222	184	30	18	
7	1	-	-	-	-	9	4	6	2	-	-	21	-	-	-	-	-	306	75	38	37	1	2	
-	-	-	-	-	-	-	-	-	-	-	-	1	-	-	-	-	-	5	8	7	3	-	-	
-	-	-	-	-	-	-	-	-	-	-	-	-	-	-	-	-	-	3	3	-	-	-	1	
-	-	-	-	-	-	-	-	-	-	-	-	-	-	-	-	-	-	10	2	-	-	-	-	
8,081	1,646	799	495	75	42	551	105	85	70	8	4	7,437	780	326	282	23	20	54,800	12,277	5,226	4,164	770	497	

EDWARD BELL,
Immigration Agent.

RETURN classifying the EMIGRANTS who departed from the

MONTHS.	PORT OF DEPARTURE.	PLACE OF																	
		THE UNITED KINGDOM.						NEW SOUTH WALES.						VAN DIEMEN'S LAND.					
		Adults.		Children.		Infants.		Adults.		Children.		Infants.		Adults.		Children.		Infants.	
		Males.	Females.	Males.	Females.	Males.	Females.	Males.	Females.	Males.	Females.	Males.	Females.	Males.	Females.	Males.	Females.	Males.	Females.
JANUARY . . .	Melbourne . . .	226	70	38	26	3	-	1,310	114	39	45	3	-	1,487	179	66	41	3	-
	Geelong . . .	-	-	-	-	-	-	3	-	-	-	-	-	-	-	-	-	-	-
	Port Fairy . . .	3	1	-	1	-	-	-	-	-	-	-	-	-	-	-	-	-	-
FEBRUARY . . .	Melbourne . . .	313	95	57	39	8	-	1,148	112	48	36	3	1	893	135	42	36	1	-
	Geelong . . .	13	4	3	2	-	-	15	5	3	1	-	-	28	10	4	5	3	-
MARCH . . .	Melbourne . . .	196	44	25	26	1	-	1,105	192	63	57	8	-	878	134	41	17	1	-
	Geelong . . .	10	9	2	2	-	-	14	6	3	2	-	-	21	12	10	2	5	-
	Portland . . .	7	-	-	-	-	-	-	-	-	-	-	-	10	-	-	-	-	-
APRIL . . .	Port Fairy . . .	2	-	-	-	-	-	-	-	-	-	-	-	-	-	-	-	-	-
	Melbourne . . .	115	32	26	20	-	-	826	125	31	28	2	-	811	116	58	33	4	-
MAY . . .	Geelong . . .	-	-	-	-	-	-	25	7	2	1	-	-	30	17	5	3	2	-
	Melbourne . . .	143	37	12	6	-	-	870	119	58	36	2	-	646	98	37	20	-	-
JUNE . . .	Geelong . . .	8	4	-	1	-	-	9	4	3	1	-	-	21	3	3	2	-	-
	Portland . . .	6	-	-	-	-	-	-	-	-	-	-	-	-	-	-	-	-	-
	Port Albert . . .	-	-	-	-	-	-	2	6	-	1	-	1	3	3	-	-	-	-
JULY . . .	Melbourne . . .	138	26	6	5	1	-	867	80	19	27	3	-	687	83	36	33	2	-
	Geelong . . .	-	1	3	-	-	-	15	5	2	1	1	-	21	5	1	2	-	-
AUGUST . . .	Melbourne . . .	143	36	15	8	1	-	1,264	140	51	43	5	-	831	110	56	32	2	-
	Geelong . . .	-	-	-	-	-	-	14	8	5	2	2	2	11	3	1	3	-	-
	Portland . . .	1	1	-	-	1	-	-	-	-	-	-	-	7	10	2	3	-	-
SEPTEMBER . . .	Port Fairy . . .	-	-	-	-	-	-	3	4	3	3	-	1	-	-	-	-	-	-
	Warrnambool . . .	-	-	-	-	-	-	-	-	-	-	-	-	6	9	4	5	1	-
OCTOBER . . .	Melbourne . . .	210	65	25	22	12	-	842	93	30	19	3	-	592	87	33	22	7	-
	Geelong . . .	-	-	-	-	-	-	5	1	-	-	-	-	4	6	1	2	-	-
NOVEMBER . . .	Port Fairy . . .	-	-	-	-	-	-	3	1	-	-	-	-	6	2	1	-	-	-
	Melbourne . . .	201	37	10	14	8	-	646	128	44	40	11	1	413	56	29	16	4	2
DECEMBER . . .	Geelong . . .	-	-	-	-	-	-	6	-	-	-	-	-	74	10	-	2	-	-
	Port Fairy . . .	-	-	-	-	-	-	6	3	-	2	-	-	-	-	-	-	-	-
TOTAL . . .	Melbourne . . .	72	18	7	6	-	-	682	95	34	24	9	-	519	77	19	13	2	1
	Geelong . . .	23	1	1	-	-	-	7	3	1	1	1	-	63	12	1	1	-	-
	Warrnambool . . .	-	-	-	-	-	-	-	-	-	-	-	-	1	1	-	-	-	-
NOVEMBER . . .	Melbourne . . .	143	29	16	13	1	-	963	109	20	12	2	-	599	146	33	37	7	-
	Geelong . . .	-	-	-	-	-	-	23	6	1	1	1	-	123	33	3	6	2	-
DECEMBER . . .	Portland . . .	-	-	-	-	-	-	-	-	-	-	-	-	1	-	-	-	-	-
	Port Fairy . . .	-	-	-	-	-	-	-	-	-	-	-	-	5	2	1	-	-	-
	Warrnambool . . .	-	-	-	-	-	-	1	-	-	-	-	-	-	-	-	-	-	-
TOTAL . . .	Melbourne . . .	235	108	45	29	4	-	1,158	122	40	35	8	-	902	114	42	22	10	-
	Geelong . . .	5	6	3	-	-	-	7	2	2	2	1	-	288	44	5	10	-	-
TOTAL . . .		2,213	624	294	220	40	-	11,839	1,490	502	420	65	6	9,981	1,517	534	368	56	3

Immigration Office,
Melbourne, 12th August, 1854.

XV.

Colony of Victoria by Sea during the year 1853.

DESTINATION.																GENERAL TOTAL.						TOTAL SOULS.		
S. AND WEST AUSTRALIA.						NEW ZEALAND AND S. SEAS.						FOREIGN PORTS.						Adults.	Children.	Infants.				
Adults.		Children.		Infants.		Adults.		Children.		Infants.		Adults.		Children.		Infants.								
Males.	Females.	Males.	Females.	Males.	Females.	Males.	Females.	Males.	Females.	Males.	Females.	Males.	Females.	Males.	Females.	Males.	Females.							
1,224	92	57	17	2	-	98	25	8	12	-	-	2	1	-	-	-	-	4,347	481	208	141	11	-	5,188
-	-	-	-	-	-	-	-	-	-	-	-	-	-	-	-	-	-	3	-	-	-	-	-	3
-	-	-	-	-	-	-	-	-	-	-	-	-	-	-	-	-	-	3	1	-	1	-	-	5
1,097	78	47	18	2	-	220	9	6	5	-	-	18	2	-	2	-	-	3,689	431	200	186	14	1	4,471
-	-	-	-	-	-	-	-	-	-	-	-	-	-	-	-	-	-	56	19	10	8	3	-	96
996	88	41	27	2	-	58	20	4	3	2	-	23	1	1	-	-	-	3,256	479	175	130	14	-	4,054
-	-	-	-	-	-	-	-	-	-	-	-	-	-	-	-	-	-	45	27	15	6	5	-	98
-	-	-	-	-	-	-	-	-	-	-	-	-	-	-	-	-	-	17	-	-	-	-	-	17
-	-	-	-	-	-	-	-	-	-	-	-	-	-	-	-	-	-	2	-	-	-	-	-	2
837	79	49	29	2	-	38	4	2	2	-	-	11	2	4	-	-	-	2,638	358	170	112	8	-	3,286
-	-	-	-	-	-	-	-	-	-	-	-	-	-	-	-	-	-	55	24	7	4	2	-	92
577	46	18	3	-	-	77	10	9	4	-	-	26	3	-	-	-	-	2,339	313	134	69	2	-	2,857
-	-	-	-	-	-	-	-	-	-	-	-	-	-	-	-	-	-	38	11	6	4	-	-	59
-	-	-	-	-	-	-	-	-	-	-	-	-	-	-	-	-	-	6	-	-	-	-	-	6
-	-	-	-	-	-	-	-	-	-	-	-	-	-	-	-	-	-	5	9	-	1	-	1	16
687	62	34	13	1	-	11	1	-	-	-	-	54	10	3	4	1	-	2,444	262	98	82	8	-	2,894
-	-	-	-	-	-	-	-	-	-	-	-	2	-	-	-	-	-	38	11	6	3	1	-	59
564	41	13	11	1	-	66	6	3	2	-	-	102	2	2	-	-	-	2,970	335	140	96	9	-	3,550
-	-	-	-	-	-	-	-	-	-	-	-	5	-	-	-	-	-	30	11	6	5	2	2	56
-	-	-	-	-	-	-	-	-	-	-	-	-	-	-	-	-	-	8	11	2	3	1	-	25
-	-	-	-	-	-	-	-	-	-	-	-	-	-	-	-	-	-	3	4	3	3	-	1	14
-	-	-	-	-	-	-	-	-	-	-	-	-	-	-	-	-	-	6	9	4	5	1	-	25
580	52	16	8	1	-	54	8	5	8	-	-	97	11	2	2	-	-	2,375	316	111	81	23	-	2,906
-	-	-	-	-	-	-	-	-	-	-	-	-	-	-	-	-	-	9	7	1	2	-	-	19
-	-	-	-	-	-	-	-	-	-	-	-	-	-	-	-	-	-	9	3	1	-	-	-	13
439	47	29	17	1	-	23	6	3	2	-	-	11	3	-	2	-	-	1,733	277	115	91	24	3	2,243
-	-	-	-	-	-	-	-	-	-	-	-	-	-	-	-	-	-	80	10	-	2	-	-	92
-	-	-	-	-	-	-	-	-	-	-	-	-	-	-	-	-	-	6	3	-	2	-	-	11
548	61	15	9	4	-	62	17	15	16	-	-	90	12	3	2	-	-	1,973	280	93	70	15	1	2,432
-	-	-	-	-	-	-	-	-	-	-	-	-	-	-	-	-	-	93	16	3	2	1	-	115
-	-	-	-	-	-	-	-	-	-	-	-	-	-	-	-	-	-	1	1	-	-	-	-	2
604	57	43	15	5	-	101	16	10	11	2	-	96	3	-	-	-	-	2,506	360	122	88	17	-	3,093
1	1	-	-	-	-	2	1	-	-	-	-	-	-	-	-	-	-	149	41	4	7	3	-	204
-	-	-	-	-	-	-	-	-	-	-	-	-	-	-	-	-	-	1	-	-	-	-	-	1
-	-	-	-	-	-	-	-	-	-	-	-	-	-	-	-	-	-	5	2	1	-	-	-	8
-	-	-	-	-	-	-	-	-	-	-	-	-	-	-	-	-	-	1	-	-	-	-	-	1
796	79	40	18	6	-	108	31	9	4	-	-	67	7	7	1	-	-	3,266	461	183	109	28	-	4,047
5	1	-	1	1	-	-	-	-	-	-	-	-	-	-	-	-	-	305	53	10	13	2	-	383
8,955	784	402	186	28	-	918	154	74	69	4	-	604	57	22	13	1	-	34,510	4,626	1,828	1,276	194	9	42,443

EDWARD BELL,
Immigration Agent.

No. XVI.

STATEMENT shewing the PROSECUTIONS instituted under the PASSENGERS' ACTS by the Emigration Officers and Assistant Emigration Officers during the year 1853.

DATE.	NAME OF VESSEL.	NAME OF PERSON PROSECUTED.	NATURE OF OFFENCE.	CLAUSE AND ACT INFRINGED.	RESULT OF PROSECUTION.
1853.					
January	6 Collooney . . .	D. Walters, Master	No additional List of Passengers	Clause 14—Imperial Act, 1852	Cautioned and mulct in Costs.
"	6 Sylph . . .	C. Thompson, "	No additional List of Passengers	Clause 14—Imperial Act, 1852	Cautioned and mulct in Costs.
"	13 Yarra . . .	T. Spain, "	Not affording proper facilities for Inspection	Clause 9—Imperial Act, 1852	Fined £20 and Costs.
"	17 Yarra . . .	T. Spain, "	Non-payment of Passenger Rate	Clause 9—Colonial Act, 1852	Fined £10 and Costs.
"	17 Jenny Lind . . .	H. S. Liddle, "	Non-payment of Passenger Rate	Clause 9—Colonial Act, 1852	Admonished.
"	24 Atalanta . . .	H. Vent, "	Insufficiency of Provisions	Clause 32—Imperial Act, 1852	Fined £200 and Costs. (£100 divided among the Passengers.)
"	25 John Melhuish . . .	T. Jenkins, "	Sale of Spirits	Clause 58—Imperial Act, 1852	Fined £100 and Costs.
"	27 Burman . . .	J. Brown, "	Sale of Spirits	Clause 58—Imperial Act, 1852	Fined £10 and Costs.
"	31 Burman . . .	J. Brown, "	Non-landing of Passengers	Clause 64—Imperial Act, 1852	Fined £200 and Costs. (£121 5s. divided among the Passengers.)
February	2 Lady Elvington . . .	G. Harris, "	Sale of Spirits	Clause 58—Imperial Act, 1852	Fined £20 and Costs.
"	5 Dreadnought . . .	J. Leauie, "	Permitting Passengers to land before Inspection	Clause 7—Colonial Act, 1852	Admonished and mulct in Costs.
"	26 Koh-i-noor . . .	J. Bennett, "	Sale of Spirits	Clause 58—Imperial Act, 1852	Fined £20 and Costs.
March	2 Sea Witch . . .	J. Jackson, "	Insufficiency of Provisions	Clause 3—Colonial Act, 1852	Fined £30 and Costs.
"	2 Sea Witch . . .	J. Jackson, "	No Passenger List	Clause 6—Colonial Act, 1852	Fined 5s. and Costs.
"	18 Freak . . .	H. Irvine, "	Sale of Spirits	Clause 58—Imperial Act, 1852	{ Fined £20 and Costs. (Afterwards refunded, the Vessel not coming under the Act.)
"	30 General List . . .	J. Lutjies, "	Sale of Spirits	Clause 58—Imperial Act, 1852	{ Dismissed. (The Act not applying to Vessels from the East Indies.)
April	5 Lord Elphinstone . . .	J. C. Roberts, "	{ Insufficiency and bad quality of Provisions } and Medical Comforts	Clauses 32 and 40—Imperial Act, 1852	{ Flour and Bread condemned, being unfit for use.
"	7 Nelson . . .	H. B. Elftingh, "	Bad quality of Provisions	Clause 32—Imperial Act, 1852	Fined £30. (£15 divided among the Passengers.)
"	8 Lucia Maria . . .	T. M. Grayson, "	Insufficiency of Provisions	Clause 32—Imperial Act, 1852	Fined £10 and Costs.
May	25 Chilian . . .	T. M. Grayson, "	No Passenger List	Clause 6—Colonial Act, 1852	Fined £10 and Costs.
"	6 Strathfieldsaye . . .	Thomas Hamlin, "	Sale of Wine	Clause 58—Imperial Act, 1852	Fined £100 and Costs. (Afterwards refunded.)
"	6 Strathfieldsaye . . .	Thomas Hamlin, "	Not posting Copies of Act	Clause 57—Imperial Act, 1852	Admonished and mulct in Costs.
"	6 Strathfieldsaye . . .	Thomas Hamlin, "	Insufficient issue of Water	Clause 32—Imperial Act, 1852	Fined £20 and Costs.
"	6 Strathfieldsaye . . .	Thomas Hamlin, "	Not issuing Provisions daily	Clause 33—Imperial Act, 1852	Admonished and mulct in Costs.
"	6 Strathfieldsaye . . .	Thomas Hamlin, "	Wrongfully landing Passengers	Clause 33—Imperial Act, 1852	Admonished and mulct in Costs.
"	7 Lord Metcalfe . . .	W. Curgill, "	Sale of Spirits	Clause 52—Imperial Act, 1852	Not proved.
"	10 Strathfieldsaye . . .	Thomas Hamlin, "	Non-landing of Passengers	Clause 58—Imperial Act, 1852	Dismissed; witnesses not being in attendance.
"	17 Calcutta . . .	W. C. Sutherland, "	Bad quality of Provisions	Clause 64—Imperial Act, 1852	Fined £10 and Costs. (Afterwards refunded.)
"	18 Prince Arthur . . .	W. C. Sutherland, "	Sale of Spirits	Clause 32—Imperial Act, 1852	Large quantity of Bread condemned, being unfit for use.
"	23 Prince Arthur . . .	J. Eedy, "	Non-landing of Passengers	Clause 64—Imperial Act, 1852	Fined £300 and Costs. (£18 to Passengers.)
June	3 Clara . . .	J. Eedy, "	No Passenger List	Clause 13—Imperial Act, 1852	Fined £50 and Costs.
"	3 Clara . . .	J. Eedy, "	Removal of Berths	Clause 14—Imperial Act, 1852	Fined £50 and Costs.
"	8 Lucia Maria . . .	H. B. Elftingh, "	No additional List of Passengers	Clause 20—Imperial Act, 1852	Fined £5 and Costs. (£25 to Passengers.)
"	23 Cleopatra (steamer) . . .	J. Charlton, Passenger	Fraudulently obtaining a Passage	Clause 15—Imperial Act, 1852	Fined £5; in default, one month's imprisonment with hard labor.
"	23 Cleopatra (steamer) . . .	Edward Brown, "	Fraudulently obtaining a Passage	Clause 15—Imperial Act, 1852	Fined £5; in default, one month's imprisonment with hard labor.

Month	Day	Name	Master	Offense	Statute	Penalty
July	4	Mary and Ellen	M. Tucker	No Passenger List	Clause 6—Colonial Act, 1852	Fined £20 and Costs.
"	22	Plantagenet	Robert Pollock	{ Not furnishing Provisions as per Dietary Scale. (9 instances)	Clause 32—Imperial Act, 1852	{ Fined £45 and Costs. (The entire amount divided among the Passengers.)
August	6	Asia	R. F. G. Howes	Unserviceable Closets	Clause 57—Imperial Act, 1852	Fined £50 and Costs.
"	6	Asia	R. F. G. Howes	Not posting Copies of Act	Clause 57—Imperial Act, 1852	Fined £50 and Costs.
"	6	Asia	R. F. G. Howes	Sale of Spirits. (190 cases proved)	Clause 58—Imperial Act, 1852	Fined £350 and Costs.
"	6	Asia	R. F. G. Howes	Breach of Contract in issuing Provisions. (1581 Statute Adults proved)	Clause 32—Imperial Act, 1852	Fined £792 10s. and Costs.
"	6	West Wind (steamer)	Walter Wright	Passenger Lists assigned by Emigration Officer	Clause 13—Colonial Act, 1852	Dismissed; witnesses not being in attendance.
"	19	Jane	John Rea	No Passenger List	Clause 6—Colonial Act, 1852	Fined £1 and Costs.
"	24	Falcon	Thomas Taylor	Sale of Spirits	Clause 58—Imperial Act, 1852	Fined £220 and Costs.
September	2	Loehiel	T. Rogers	Sale of Spirits	Clause 58—Imperial Act, 1852	Dismissed.
"	7	Chilian	T. M. Grayson	No Passenger List	Clause 6—Colonial Act, 1852	Fined £20 and Costs.
October	26	Robert Clive	J. Roberts	No Passenger List	Clause 6—Colonial Act, 1852	Admonished and mulct in Costs.
"	7	Mazeppe	T. Eves	No Passenger List	Clause 6—Colonial Act, 1852	Admonished and mulct in Costs.
"	19	Baretto Junior	J. R. Smith	Breach of Contract.	Clause 32—Imperial Act, 1852	Admonished and mulct in Costs.
"	19	Baretto Junior	J. R. Smith	Sale of Spirits	Clause 61—Imperial Act, 1852	Withdrawn.
"	19	Baretto Junior	J. R. Smith	Unserviceable Closets	Clause 58—Imperial Act, 1852	Fined £50 and Costs. (£2 2s. to Witnesses)
November	5	Royal Stuart	R. Goble	Insufficiency of Provisions	Clause 22—Imperial Act, 1852	Dismissed.
"	5	Royal Stuart	R. Goble	Insufficiency of Provisions	Clause 32—Imperial Act, 1852	{ Compromised: Master paying the Passengers £5 per head and Costs of Court.
"	17	Invincible	J. Martin	No Passenger List	Clause 13—Imperial Act, 1852	Fined £10 and Costs.
"	17	Ann Dashwood	G. Braunwell	Insufficiency of Provisions	Clause 32—Imperial Act, 1852	{ Compromised: Master paying the Passengers (81½ in number) £2 per head.
December	2	Pirate	Peter Greig	Permitting Passengers to land before Inspection	Clause 7—Colonial Act, 1852	Fined £1 and Costs.
"	19	Highland Lassie	James Welsh	No additional List of Passengers	Clause 14—Imperial Act, 1852	Fined £20 and Costs.
"	19	Highland Lassie	James Welsh	Want of Accommodation	Clause 18—Imperial Act, 1852	Fined £20 and Costs.
"	22	Gazelle	M. McKenzie	No additional List of Passengers	Clause 14—Imperial Act, 1852	Fined £10 and Costs.
"	22	Gazelle	M. McKenzie	Want of Accommodation	Clause 18—Imperial Act, 1852	Fined £5 and Costs.
"	22	Gazelle	M. McKenzie	More than two Passengers in a berth	Clause 19—Imperial Act, 1852	Fined £5 and Costs.
"	22	Gazelle	M. McKenzie	Carrying Cargo on Passengers' Deck	Clause 26—Imperial Act, 1852	Fined £5 and Costs.
"	29	Countess of Yarborough	J. Sumner	No Passenger List	Clause 13—Imperial Act, 1852	Fined £5 and Costs.
"	29	Countess of Yarborough	J. Sumner	No additional List of Passengers	Clause 14—Imperial Act, 1852	Fined £5 and Costs.
"	29	Countess of Yarborough	J. Sumner	Unserviceable Closets	Clause 22—Imperial Act, 1852	Fined £30 and Costs.
"	29	Countess of Yarborough	J. Sumner	Unwholesome Provisions	Clause 32—Imperial Act, 1852	{ Compromised: Master paying the Passengers (34 in number) £5 per head.
"	29	Countess of Yarborough	J. Sumner	Issuing uncooked Provisions	Clause 33—Imperial Act, 1852	Fined £5 and Costs.
"	29	Countess of Yarborough	J. Sumner	No Passengers Steward	Clause 35—Imperial Act, 1852	Fined £5 and Costs.
"	29	Countess of Yarborough	J. Sumner	Sale of Spirits	Clause 58—Imperial Act, 1852	Dismissed.
"	30	Countess of Cawdor	John Paterson	Breach of Contract in issuing Provisions.	Clause 32—Imperial Act, 1852	Fined £5 and Costs.

EDWARD BELL,
Immigration Agent.

Immigration Office,
Melbourne, 12th August, 1854.

No. XVII.

RETURN of the AMOUNTS collected at the several Ports of the Colony, during the year 1853, as a PASSENGER RATE, under the Act of Council 16 Vic., No. 17, distinguishing the places whence the Immigrants have arrived.

Date of Collection.	Ports at which Collected.	Places whence the Immigrants have arrived.						Total Number of Statute Adults upon whom the Rate has been levied.	Amount Levied.	TOTAL.				
		THE UNITED KINGDOM.	NEW SOUTH WALES.	VAN DIEMEN'S LAND.	SOUTH AND WEST AUSTRALIA.	NEW ZEALAND AND SOUTH SEAS.	FOREIGN PORTS.							
Number of Statute Adults.														
1853.									£	s.	d.	£	s.	d.
January	Melbourne	.	549	1075½	1045	.	.	2669½	667	7	6			
"	Geelong	.	28	89	2	.	.	119	29	15	0			
"	Port Albert	.	.	16	.	.	.	16	4	0	0			
February	Melbourne	.	646½	1045	1106½	.	.	2798	699	10	0			
"	Geelong	.	82½	44	.	.	.	126½	31	12	6			
"	Belfast	.	3½	3½	0	17	6			
March	Melbourne	.	1152	1240½	1834	.	.	4226½	1056	12	6			
"	Geelong	.	40½	81	.	.	.	121½	30	7	6			
"	Portland	.	1	.	4	.	.	5	1	5	0			
"	Port Albert	.	6	18	.	.	.	24	6	0	0			
April	Melbourne	.	1236	1277½	1796½	.	.	4310	1077	10	0			
"	Geelong	.	58½	26	.	.	.	84½	21	2	6			
"	Warrnambool	.	4	4	1	0	0			
May	Melbourne	.	1258½	707½	646	.	.	2612	653	0	0			
"	Geelong	.	39	19	.	.	.	58	14	10	0			
"	Port Albert	.	21½	14½	.	.	.	36	9	0	0			
June	Melbourne	.	1120½	586½	206½	.	.	1913½	478	7	6			
"	Geelong	.	22	35½	.	.	.	57½	14	7	6			
"	Portland	.	.	12	13	.	.	25	6	5	0			
"	Belfast	.	1	1	0	5	0			
"	Port Albert	.	8	12	.	.	.	20	5	0	0			
July	Melbourne	.	610½	502	348	49½	260	1770	442	10	0			
"	Geelong	.	5	33	.	.	.	38	9	10	0			
"	Portland	.	.	11½	.	.	.	11½	2	17	6			
"	Belfast	.	9	9	2	5	0			
"	Port Albert	.	.	6½	.	.	.	6½	1	12	6			
August	Melbourne	.	737	576½	405½	35	302½	2056½	514	2	6			
"	Geelong	.	26	16½	.	.	.	42½	10	12	6			
"	Portland	.	.	6	.	.	.	6	1	10	0			
"	Port Albert	.	.	4	.	.	.	4	1	0	0			
September	Melbourne	.	993½	762	608½	59½	121	2544½	636	2	6			
"	Geelong	.	104	227½	.	.	.	331½	82	17	6			
"	Belfast	.	3½	3½	0	17	6			
"	Port Albert	.	.	1	.	.	.	1	0	5	0			
October	Melbourne	1957	979	870½	1108½	101½	421	5437½	1359	7	6			
"	Geelong	15	134½	135½	.	34	.	319	79	15	0			
"	Belfast	.	.	5	.	.	.	5	1	5	0			
"	Port Albert	.	.	14	.	.	.	14	3	10	0			
November	Melbourne	1190	1041½	654	620½	32½	472½	4011	1002	15	0			
"	Geelong	16½	42½	165½	.	.	72	296½	74	2	6			
"	Portland	.	6½	.	15½	.	.	22	5	10	0			
"	Belfast	.	21	21	5	5	0			
"	Port Albert	.	.	20½	.	.	.	20½	5	2	6			
December	Melbourne	665	663½	542½	606	75	372	2924	731	0	0			
"	Geelong	119½	30	223	8	17	21	418½	104	12	6			
"	Portland	.	.	17	.	.	1	18	4	10	0			
"	Warrnambool	.	6	6	1	10	0			
"	Port Albert	.	.	12	.	.	.	12	3	0	0			
TOTALS		3,963	11,691	11,105½	10,374	404	2043	39,580½	9895	2	6	9895	2	6

Immigration Office,
Melbourne, 12th August, 1854.

EDWARD BELL,
Immigration Agent.

No. XVIII.

RETURN of PERSONS (other than those introduced in Government Ships, or in Ships chartered by the Committee of the Fund for Promoting Female Emigration) who have been received into the GOVERNMENT DEPÔTS during the year 1853.

Date.	Name of Vessel.	Port of Arrival.	Port of Departure.	Adults.		Children.		TOTAL.	Disposal.		REMARKS.
				Males.	Females.	Males.	Females.		Hired.	Did not hire.	
1853. 6th May . . .	Earl Grey . . .	Melbourne	Plymouth	57	57	...	57	{ 57 Irish Constabulary to join the Melbourne City Police.
7th June . . .	Shamrock	Launceston	1	1	1	...	{ Admitted by order of His Excellency. (Country, Syria.)
18th June . . .	Earl of Charlemont	Geelong	Liverpool	259	20	44	39	362	54	308	{ These were the passengers by the Earl of Charlemont (bound to Port Phillip and Sydney), which was wrecked at the West Barwon Heads on the 18th June, 1853. Of the 308 persons who did not hire, 44 were forwarded to Sydney at the expense of the Owners.
9th July . . .	Richard . . .	Melbourne	Paraiba	67	31	28	26	152	40	112	{ Sailed from London in the Sir Fowell Buxton; were wrecked on the Brazilian Coast, and forwarded to Melbourne by H.M. Consul at Paraiba.
22d November	Ontario	London	1	1	3	3	8	...	8	Wrecked at Port Phillip Heads.

Immigration Office,
Melbourne, 12th August, 1854.

EDWARD BELL,
Immigration Agent.

No. XIX.

RETURN classifying the PERSONS received into the HOUSELESS IMMIGRANTS' ASYLUMS at Batman's Hill and South Yarra during the undermentioned periods; also shewing the Amount of Receipts at each Asylum.

A.

1853.

NAME OF ASYLUM.	FAMILIES.					SINGLE ADULTS.			Total Number of Persons received.	Total Amount of Receipts.
	Adults.		Children.		Amount Collected.	Males.	Females.	Amount Collected.		
	Males.	Females.	Males.	Females.						
South Yarra .	150	162	145	157	£ s. d. 1082 2 0	...	27	£ s. d. 7 12 0	641	£ s. d. 1089 14 0
Batman's Hill	130	124	132	121	581 8 9	329	...	303 6 0	836	884 14 9
TOTALS .	280	286	277	278	1663 10 9	329	27	310 18 0	1477	1974 8 9

B.

FROM THE 1ST JANUARY TO THE 31ST JULY, 1854.

NAME OF ASYLUM.	FAMILIES.					SINGLE ADULTS.			Total Number of Persons received.	Total Amount of Receipts.
	Adults.		Children.		Amount Collected.	Males.	Females.	Amount Collected.		
	Males.	Females.	Males.	Females.						
* South Yarra	16	16	6	9	£ s. d. 103 0 0	£ s. d. ...	47	£ s. d. 103 0 0
Batman's Hill	27	29	30	44	320 13 0	43	...	113 8 6	173	434 1 6
TOTALS .	43	45	36	53	423 13 0	43	...	113 8 6	220	537 1 6

* This Statement for South Yarra extends to the 15th March only, the Asylum having been closed since that date.

EDWARD BELL,

Immigration Agent.

Immigration Office,

Melbourne, 12th August, 1854.

No. XX.

RETURN of the PERSONS who have been placed in QUARANTINE at the SANITARY STATION during the period from 1st July, 1853, to 17th July, 1854.

No.	Name of Ship.	Date of Arrival of Ship.	Total Number landed at Station.	Number under Medical Treatment.	Died.	Cured.	Discharged from Station.				
1	Confiance	7th April, 1853	} 201								
2	Calliope	16th May "									
3	Childe Harold	12th June "									
4	Genghis Khan	25th June "									
5	Australia	18th Sept. "									
6	Arabian	21st Sept. "						65	11	54	190
7	Charles	30th Sept. "									
8	Statesman	3rd October "									
9	Conway	12th June, 1854.									
10	City of Manchester	1st July "									
11	Ontario	8th July "									

NOTE.—Certain of the Immigrants by the Confiance, Calliope, and Childe Harold had not been released from Quarantine on the 1st July, 1853, and are therefore included in this Return.

Immigration Office,
Melbourne, 12th August, 1854.

EDWARD BELL,
Immigration Agent.

No. XXI.

STATEMENT compiled from RETURNS furnished by the Commissioners of Crown Lands, in the Colony of Victoria, shewing the Rates of WAGES, the Demand for LABOR, and the Principal PRODUCTIONS of each District, during the year 1853.

A.

WAGES.

DISTRICT.	MALES.										FEMALES.							
	Carpenters.	Smiths.	Wheelwrights.	Bricklayers.	Masons.	Farm Laborers.	Shepherds.	Cooks.	Housemaids.	Laundresses.	Nursemaids.	Farm Servants.	General House Servants.					
	Per Diem without Food and Lodging.					Per Diem without Food and Lodging.					Per Annum with Food and Lodging.							
	£ s. d.	£ s. d.	£ s. d.	£ s. d.	£ s. d.	£ s. d.	£ s. d.	£ s. d.	£ s. d.	£ s. d.	£ s. d.	£ s. d.	£ s. d.	£ s. d.	£ s. d.	£ s. d.	£ s. d.	
Gipps' Land	1 0 0	...	1 0 0	75 0 0	60 0 0	50 0 0	50 0 0	50 0 0	30 0 0	50 0 0	...	60 0 0	
Murray	1 10 0	...	1 10 0	37 10 0	30 0 0	35 0 0	22 10 0	
Western Port	1 0 0	1 2 6	1 0 0	1 0 0	1 0 0	...	50 0 0	25 0 0	30 0 0	20 0 0	20 0 0	30 0 0	...	35 0 0	
Portland Bay	1 2 6	0 17 6	1 5 0	...	55 0 0	...	22 10 0	22 10 0	22 10 0	27 10 0	...	27 10 0	
Wimmera
Averages	1 3 0	1 0 0	1 4 0	1 5 0	1 2 6	56 5 0	48 15 0	47 10 0	33 2 6	35 16 6	24 3 6	36 5 0	...	36 5 0	

B.
PRODUCTIONS AND DEMAND FOR LABOR.

DISTRICT.	PRINCIPAL PRODUCTIONS.	DEMAND FOR LABOR AND DESCRIPTION OF LABORERS REQUIRED.
Gipps' Land . . .	Wheat, Barley, Oats, Potatoes, Hay, Sheep, Wool and Fat Cattle	Shepherds, Hutkeepers, Cooks, Bullock Drivers, Married Couples, House Servants, Carpenters and Bricklayers, all in demand. Every kind of labor is required, especially that of Female House Servants. Agricultural and Mechanical Labor are most in request. All kinds of labor are in demand. Splitters, Sawyers, Fencers, and Farm Servants generally, are most needed. Masters are economising labor by running large flocks of sheep, and otherwise reducing their establishments.
Murray	Sheep and Cattle	
Western Port	Wheat, Maize, Barley, Oats, Rye, Millet, Potatoes, Grapes, Hay, Wool, &c., &c	
Portland Bay	Wheat, Oats, Potatoes, Sheep and Wool	
Wimmera	Hay, Oats, Fat Stock and Wool	

Immigration Office,
Melbourne, 12th August, 1854.

EDWARD BELL,
Immigration Agent.

RETURN shewing the PRICES, WAGES, and MISCELLANEOUS CHARGES current

DESCRIPTION.	Term or Quantity.	DISTRICT OF BENDIGO.					DISTRICT OF CASTLEMAINE.			
		Central Bendigo.	Junction Station.	Robinson Crusoe.	Eagle Hawk.	Spring Creek.	Castlemaine.	Golden Point.	Fryer's Creek.	Maldon.
		£ s. d.	£ s. d.	£ s. d.	£ s. d.	£ s. d.	£ s. d.	£ s. d.	£ s. d.	£ s. d.
BUTCHER'S MEAT.										
Beef ...	Per lb.	0 0 7	0 0 7	0 0 7	0 0 7	0 0 7	0 0 10	0 0 11	0 1 0	0 1 0
Mutton ...	Per lb.	0 0 7	0 0 7	0 0 7	0 0 7	0 0 7	0 0 9	0 0 10	0 0 10	0 0 9
GROCERIES.										
Tea ...	Per lb.	0 3 6	0 3 6	0 3 6	0 3 6	0 3 6	0 2 10	0 2 10	0 3 0	0 3 0
Coffee ...	Per lb.	0 3 0	0 3 0	0 3 0	0 3 0	0 3 0	0 2 6	0 2 8	0 2 9	0 2 6
Sugar ...	Per lb.	0 0 11	0 1 0	0 1 0	0 1 0	0 1 0	0 0 9	0 0 9	0 0 8	0 0 10
Salt ...	Per lb.	0 0 11	0 1 0	0 1 0	0 1 0	0 1 0	0 0 9	0 1 0	0 0 10	0 1 0
Tobacco ...	Per lb.	0 7 0	0 7 3	0 7 3	0 7 3	0 7 3	0 6 9	0 7 3	0 7 0	0 6 6
Rice ...	Per lb.	0 1 0	0 1 4	0 1 4	0 1 4	0 1 4	0 1 3	0 1 3	0 1 3	0 1 4
Arrowroot	Per lb.	0 2 9	0 3 0	0 3 0	0 3 0	0 3 0	0 3 6	0 4 0	0 1 6	0 2 0
CHANDLER'S STORES.										
Soap ...	Per lb.	0 1 0	0 1 2	0 1 0	0 1 0	0 1 0	0 1 2	0 1 2	0 1 0	0 1 0
Candles ...	Per lb.	0 1 6	0 1 6	0 1 6	0 1 6	0 1 6	0 1 4	0 1 2	0 3 0	0 1 6
BREAD STUFFS.										
Bread ...	4-lb. loaf	0 4 0	0 4 0	0 4 0	0 4 0	0 4 0	0 3 0	0 3 9	0 4 3	0 4 3
Flour ...	Per lb.	0 1 2	0 1 3	0 1 3	0 1 3	0 1 3	0 1 0	0 0 11	0 1 1	0 1 3
Oatmeal ...	Per lb.	0 1 2	0 1 4	0 1 6	0 1 4	0 1 4	0 1 1	0 0 11	0 1 0	0 1 0
DAIRY PRODUCE.										
Milk ...	Per quart	0 2 3	0 2 6	0 2 6	0 2 6	0 2 6	0 2 0	0 2 0	0 3 0	0 2 0
Butter ...	Per lb.	0 4 0	0 4 3	0 4 3	0 4 3	0 4 3	0 3 6	0 3 9	0 3 6	0 3 6
Cheese ...	Per lb.	0 2 3	0 2 6	0 2 6	0 2 6	0 2 6	0 2 8	0 3 6	0 2 6	0 2 3
HARDWARE.										
Spades ...	Each	0 7 0	0 7 0	0 7 0	0 7 0	0 7 0	0 8 0	0 10 0	0 9 0	0 8 6
Shovels ...	Each	0 7 6	0 7 6	0 7 6	0 7 6	0 7 6	0 9 6	0 12 0	0 10 0	0 10 0
Picks ...	Each	0 9 0	0 9 0	0 9 0	0 9 0	0 9 0	0 9 0	0 9 6	0 10 0	0 10 0
Buckets ...	Each	0 8 6	0 8 6	0 8 6	0 8 6	0 8 6	0 11 0	0 10 0	0 9 0	0 10 0
MISCELLANEOUS.										
Blankets ...	Per pair	1 3 6	1 3 6	1 3 6	1 3 6	1 3 6	1 12 6	2 0 0	1 10 0	1 10 0
Boots ...	Per pair	2 5 0	2 5 0	2 5 0	2 5 0	2 5 0	1 10 0	1 15 0	1 10 0	1 12 6
Potatoes ...	Per lb.	0 1 4	0 1 6	0 1 6	0 1 6	0 1 6	0 1 3	0 1 8	0 1 0	0 1 0
Oats ...	Per bushel	1 15 0	1 15 0	1 15 0	1 15 0	1 15 0	1 19 0	2 0 0	1 18 6	1 18 0
Bran ...	Per bushel	0 19 0	0 19 0	0 19 0	0 19 0	0 19 0	1 3 0	1 4 0	1 15 0	1 4 6
Hay ...	Per ton	45 0 0	45 0 0	45 0 0	45 0 0	45 0 0	...	95 0 0	95 0 0	90 0 0
LABORING MEN										
Sawyers ...	Per diem	1 2 6	1 2 6	1 2 6	1 2 6	1 2 6	1 0 0	1 10 0	1 10 0	1 10 0
Carpenters ...	Per diem	1 10 0	1 10 0	1 10 0	1 10 0	1 10 0	1 5 0	1 10 0	1 10 0	1 10 0
Splitters ...	Per diem	1 0 0	1 0 0	1 0 0	1 0 0	1 0 0	1 2 6	1 10 0	1 10 0	1 10 0
Bricklayers ...	Per diem	1 0 0	1 0 0	1 0 0	1 0 0	1 0 0	1 0 0	1 10 0	1 10 0	1 10 0
Tentmakers ...	Per diem	0 15 0	0 15 0	0 15 0	0 15 0	0 15 0	1 5 0	1 5 0
Painters ...	Per diem	1 0 0	1 0 0	1 0 0	1 0 0	1 0 0
Quarrymen ...	Per diem	0 15 0	0 15 0	0 15 0	0 15 0	0 15 0	1 5 0	1 5 0	1 5 0	1 5 0
Blacksmiths ...	Per diem	1 10 0	1 10 0	1 10 0	1 10 0	1 10 0	1 15 0	1 10 0	1 10 0	1 10 0
Day Laborers ...	Per diem	0 15 0	0 15 0	0 15 0	0 15 0	0 15 0	0 10 0	0 15 0	0 10 0	0 10 0
Carters ...	Per diem	0 16 0	0 16 0	0 16 0	0 16 0	0 16 0	0 12 0	0 16 6	1 0 0	0 12 0
Shepherds and Hutkeepers	Per annum
CARTAGE.										
Horse Teams	Per diem	3 10 0	3 10 0	3 10 0	3 10 0	3 10 0
Bullock Teams	Per diem	4 10 0	4 10 0	4 10 0	4 10 0	4 10 0	...	2 5 0	2 5 0	2 5 0
Carriage from Melbourne	Per ton	90 0 0	90 0 0	90 0 0	90 0 0	90 0 0	80 0 0	85 0 0	85 0 0	80 0 0

Immigration Office, Melbourne, 12th August, 1854.

XXII.

at the various GOLD FIELDS of the Colony, during the Month of June, 1854.

DISTRICT OF BALLAARAT.				DISTRICT OF THE OVENS.				DISTRICT OF M'IVOR.			
Creswick's Creek.	Wardy Yallock.	New Chum Gully.	Head Station.	Beechworth.	Snake Valley.	Yakandanda.	Buckland.	Heathcote.	Waranga.		
£ s. d.	£ s. d.	£ s. d.	£ s. d.	£ s. d.	£ s. d.	£ s. d.	£ s. d.	£ s. d.	£ s. d.		
0 0 10	0 0 10	0 1 0	0 1 0	0 0 8	0 0 9	0 0 8	0 0 8	0 0 8	0 0 8		
0 0 8	0 0 8	0 0 10	0 0 10	0 0 8	0 0 7	0 0 8	0 0 8	0 0 7	0 0 8		
0 3 0	0 3 0	0 3 6	0 3 6	0 3 0	0 3 0	0 3 6	0 3 6	0 3 0	0 3 3		
0 2 6	0 3 0	0 3 6	0 3 6	0 3 0	0 2 6	0 3 6	0 3 3	0 3 0	0 3 0		
0 0 8	0 0 8	0 1 0	0 1 0	0 1 0	0 1 0	0 1 0	0 1 1	0 1 1	0 1 3		
0 0 8	0 0 8	0 1 0	0 1 0	0 1 3	0 1 1	0 1 0	0 1 3	0 1 0	0 1 4		
0 8 0	0 7 6	0 7 6	0 8 0	0 7 0	0 7 0	0 8 0	0 8 0	0 7 0	0 7 0		
0 0 8	0 0 9	0 1 0	0 0 10	0 1 6	0 1 3	0 1 3	0 1 9	0 1 3	0 1 6		
0 2 0	0 3 0	0 4 0	0 4 0	0 4 0	0 4 0	0 4 6	0 4 3	0 4 0	0 4 0		
0 0 9	0 1 0	0 2 0	0 2 0	0 1 6	0 2 0	0 1 6	0 1 6	0 1 6	0 1 4		
0 1 0	0 2 0	0 1 6	0 2 0	0 3 6	0 3 3	0 3 6	0 4 6	0 3 0	0 3 6		
0 3 0	0 4 0	0 4 6	0 4 0	0 4 6	0 4 0	0 4 0	0 5 6	0 4 0	0 5 0		
0 0 8	0 1 6	0 1 0	0 1 0	0 1 3	0 1 0	0 1 0	0 1 6	0 1 0	0 1 6		
0 0 8	0 0 8	0 1 0	0 0 8	0 1 4	0 1 0	0 1 0	0 2 0	0 1 0	0 1 6		
0 2 0	0 2 0	0 3 0	0 2 6	0 2 3	0 2 0	0 2 0	0 2 0	0 1 6	0 2 9		
0 3 6	0 3 0	0 4 0	0 4 0	0 4 3	0 3 6	0 3 6	0 4 6	0 4 0	0 4 0		
0 2 6	0 3 0	0 3 6	0 3 0	0 1 6	0 2 6	0 2 6	0 2 9	0 2 9	0 3 0		
0 9 0	0 8 0	0 10 0	0 10 0	0 12 6	0 10 0	0 10 0	0 10 0		
0 10 0	0 9 0	0 10 0	0 12 0	0 12 6	0 15 0	0 15 0	0 10 0		
0 12 0	0 12 0	0 10 0	0 10 0	0 11 0	0 15 0	0 15 0	0 11 0	...	0 15 0		
0 12 0	0 12 0	0 10 0	0 12 0	0 9 0	0 10 0	0 10 0	0 11 0		
1 5 0	1 5 0	1 18 0	1 18 0	1 7 6	2 0 0	2 0 0	2 10 0	1 9 0	1 17 6		
1 15 0	1 15 0	1 10 0	1 15 0	2 7 6	2 0 0	2 0 0	2 5 0	1 15 0	1 13 0		
0 1 0	0 1 0	0 1 0	0 1 0	0 1 3	0 1 6	0 1 6	0 2 3	0 1 0	0 1 4		
1 10 0	2 5 0	1 10 0	1 10 0	1 15 0	2 0 0	2 0 0	2 10 0	2 5 0	2 10 0		
2 0 0	2 0 0	...	2 0 0	1 0 0	0 15 0	0 15 0	1 10 0	1 4 0	1 10 0		
100 0 0	100 0 0	120 0 0	120 0 0	...	70 0 0	75 0 0	75 0 0		
1 10 0	1 10 0	1 10 0	1 10 0		
1 15 0	1 15 0	1 10 0	1 10 0	1 12 6	1 12 6	1 12 6	1 12 6		
1 10 0	1 10 0	1 10 0	1 10 0	1 10 0	1 10 0	1 10 0	1 10 0		
1 5 0	1 5 0	1 5 0	1 10 0	1 10 0	1 10 0	1 10 0	1 10 0		
...	1 10 0	1 10 0	1 10 0	1 10 0	1 10 0		
1 5 0	1 5 0	1 5 0	1 5 0	1 10 0	1 10 0	1 10 0	1 10 0		
1 10 0	1 10 0	1 5 0	2 0 0	1 10 0	1 10 0	1 10 0	1 10 0		
1 15 0	1 15 0	2 5 0	3 0 0	1 5 0	1 5 0	1 5 0	1 5 0		
0 12 0	0 12 0	0 12 0	0 10 0	1 0 0	1 0 0	1 5 0	1 5 0	0 8 6	0 9 0		
0 14 0	0 14 0	0 14 0	0 12 0	1 0 0	1 0 0	1 5 0	1 5 0	0 9 0	0 10 6		
40 0 0	40 0 0	50 0 0	60 0 0		
5 0 0	3 0 0	4 0 0	4 0 0	5 0 0	5 0 0	5 0 0	5 0 0		
7 0 0	5 0 0	6 0 0	6 0 0	6 0 0	5 0 0	3 0 0	3 0 0		
95 0 0	95 0 0	90 0 0	90 0 0	100 0 0	100 0 0	110 0 0	120 0 0	90 0 0	110 0 0		

EDWARD BELL,
Immigration Agent.

No. XXIII.

RETURN shewing the WAGES, PRICES, and MISCELLANEOUS CHARGES current in MELBOURNE during the Month of June, 1854.

WAGES.

OCCUPATION.	HOW PAID.	RATE.		REMARKS.
		From	To	
Bakers	Per week	£ s. d. 3 0 0	£ s. d. 4 0 0	
Blacksmiths	"	5 0 0	5 5 0	
" (Foundries)	"	6 0 0	7 0 0	
Boatmen	Per diem	0 10 0	0 12 0	
Boilermakers	Per week	6 6 0	8 8 0	
Bootmakers	Per piece			
"	Wellingtons	1 15 0	2 0 0	
"	Short Boots	0 12 0	0 18 0	
"	Per diem	0 12 0	0 14 0	
Brass Founders	Per week	6 6 0	7 7 0	
Bricklayers	Per diem	1 5 0	1 10 0	
Brickmakers	Per 1000	2 10 0	3 0 0	
Bullock Drivers (on Farms)	Per week	2 5 0	2 10 0	With rations.
" (on the Roads)	"	3 0 0	4 0 0	"
Butchers	"	4 0 0	6 0 0	"
Cabinetmakers	Per week	6 6 0	7 0 0	
Carpenters	Per diem	1 5 0	1 10 0	
" (Job Work)	"	1 10 0	2 0 0	
Coachmakers	Per week	6 6 0	8 0 0	
Coachsmiths	"	6 6 0	8 0 0	
Compositors	Per 1000	0 2 6	...	
Cooks (Male)	Per week	2 0 0	6 0 0	And found.
Coopers	"	6 0 0	7 7 0	
Curriers	"	5 0 0	6 0 0	
Engineers	Per week	6 0 0	10 0 0	
Firemen (Steamers)	Per month	16 0 0	20 0 0	And found.
Fitters (Iron)	Per week	6 0 0	7 0 0	
Gardeners	Per annum	70 0 0	100 0 0	And found.
Glaziers	Per diem	1 0 0	...	
Grooms	Per week	1 0 0	1 10 0	And found.
Gunsmiths	"	6 0 0	7 0 0	
Harnessmakers	Per week	4 10 0	5 5 0	
House Servants	Per annum			
" (Male)	"	52 0 0	70 0 0	And found.
" (Female)	"	30 0 0	45 0 0	"
" (Girls)	"	15 0 0	20 0 0	"
" (Boys)	"	20 0 0	40 0 0	"
Hutkeepers	"	35 0 0	...	"
Laundresses	Per annum	35 0 0	45 0 0	And found.
Lightermen	Per week	3 0 0	4 0 0	
Masons	Per diem	1 15 0	...	
Messengers	Per week	1 10 0	3 0 0	
Millers	"	4 0 0	5 10 0	
Moulders	"	6 6 0	7 10 0	
Needlewomen	Per week	0 12 0	0 18 0	And found.
Ostlers (at Hotels)	Per week	1 0 0	1 10 0	And found.
Overseers (Sheep)	Per annum	120 0 0	150 0 0	"
" (Farm)	"	120 0 0	150 0 0	"
Painters	Per diem	1 0 0	1 3 0	
Pastrycooks	Per week	3 0 0	5 0 0	And found.
Plasterers	Per diem	1 5 0	1 10 0	
Ploughmen	Per annum	70 0 0	100 0 0	And found.
Plumbers	Per week	5 0 0	7 0 0	
Porters	"	1 5 0	2 0 0	And found.
Printers (Pressmen)	"	6 6 0	7 7 0	
Quarrymen	Per diem	0 15 0	1 0 0	

WAGES—(Continued).

OCCUPATION.	HOW PAID.	RATE.		REMARKS.
		From	To	
		£ s. d.	£ s. d.	
Reapers	Per acre	{ None required at this season.
Saddlers (Journeymen)	Per week	4 0 0	6 6 0	
Sailmakers	"	5 0 0	5 10 0	
Sailors (England)	The trip	35 0 0	40 0 0	And found.
" (Coastwise)	Per month	9 0 0	12 0 0	"
Salesmen	Per annum	200 0 0	250 0 0	
Sawyers	Per diem	1 5 0	2 10 0	
Seamen (Steamers)	Per month	10 0 0	15 0 0	And found.
Shearers (good)	Per 100	None required at this season.
Shepherds	Per annum	40 0 0	50 0 0	And found.
Shinglers	Per yard	0 18 0	1 5 0	
Ship Joiners	Per week	6 0 0	8 0 0	
Shipwrights	"	6 0 0	8 0 0	
Slaters	Per yard	0 15 0	1 0 0	
Stockkeepers	Per annum	70 0 0	80 0 0	And found.
Storemen	Per diem	0 12 0	0 14 0	
Tailors (Journeymen)	The piece			
" (Trousers)	Per pair	0 12 6	0 15 0	
" (Dress Coats)	Each	2 7 6	...	
" (Shooting Coats)	"	1 15 0	...	
" (Waistcoats)	"	0 12 6	0 15 0	
Tanners	Per week	4 0 0	5 0 0	
Tinplate Workers	"	4 0 0	5 10 0	
Turners	"	4 0 0	5 0 0	
Unskilled Laborers	Per week	1 10 0	2 0 0	And found.
" " "	Per diem	0 10 0	0 12 0	
" " (on board Ships)	"	0 10 0	0 15 0	
Upholsterers	"	0 15 0	1 1 0	
Waiters (at Hotels)	Per week	1 0 0	2 0 0	And found.
Warehousemen	"	4 0 0	5 0 0	
Watchmakers	"	5 0 0	7 0 0	
Wharfingers (Laborers)	"	3 10 0	4 10 0	
Wheelwrights	"	6 6 0	7 7 0	

PRICE CURRENT.

ARTICLES.	QUANTITY.	RATE.		REMARKS.
		From	To	
		£ s. d.	£ s. d.	
BUILDING MATERIALS.				
Bricks	Per thousand	9 0 0	10 0 0	Colonial.
Lime	Per bag	0 9 0	...	
Hardwood Scantling, 2 x 4	Per hundred feet	1 18 0	2 0 0	Lineal.
Stringy Bark, 2 x 4	"	1 18 0	2 0 0	"
Sydney Cedar	Per foot	0 1 0	0 1 4	Superficial.
Red Deals, 9 x 3	"	0 1 0	0 1 3	
" 11 x 3	"	0 1 4	0 1 6	
Shingles (14 inch)	Per thousand	1 10 0	...	
Slates (Duchess)	"	10 0 0	15 0 0	
Laths	"	1 5 0	...	
CLOTHING.				
Men's Stout Shoes	Per pair	0 10 0	0 18 0	
Women's Stout Shoes	"	0 8 0	0 10 0	
Wellington Boots (Colonial)	"	2 10 0	3 0 0	
" " (Imported)	"	1 5 0	1 10 0	
Inside Cotton Shirts	Each	0 3 6	0 5 0	
Flannel Shirts	"	0 5 0	0 7 6	
Regatta Shirts	"	0 4 0	0 5 6	
Check Shirts	"	0 2 0	0 3 6	
Moleskin Trousers	Per pair	0 7 0	0 8 0	
Fustian Trousers	"	0 3 0	0 5 6	
Duck Trousers	"	0 3 0	0 5 0	

PRICE CURRENT—(Continued).

ARTICLES.	QUANTITY.	RATE.		REMARKS.
		From	To	
CLOTHING—(continued).				
Cloth, according to quality	Per yard	£ 0 6 0	£ 1 0 0	
Waistcoats (Cloth)	Each	0 7 6	0 12 0	
" (Fancy)	"	0 7 6	0 12 0	
Coats (superior Cloth)	"	4 0 0	7 0 0	
" (Shepherds')	"	2 5 0	3 0 0	
Handkerchiefs (Cotton)	"	0 0 6	0 1 0	
" (Silk)	"	0 4 0	0 6 0	
Prints for Gowns	Per yard	0 0 6	0 1 6	
Cotton Socks	Per pair	0 1 0	0 1 6	
" Stockings	"	0 1 6	0 2 6	
Worsted Stockings	"	0 2 0	0 3 6	
Blankets	"	1 0 0	1 10 0	
Rugs (Woolen)	Each	1 5 0	1 15 0	Railway.
Mattresses (Hair)	"	2 0 0	6 0 0	
Sheeting (Calico)	Per yard	0 1 0	0 2 0	
FORAGE.				
Hay	Per ton	24 0 0	25 0 0	
Oats	Per bushel	0 11 0	0 14 0	
Straw	Per ton	20 0 0	25 0 0	
Bran	Per bushel	0 4 9	0 5 0	
Maize	"	0 13 0	0 16 0	
FUEL.				
Wood	Per horse load	2 0 0	2 10 0	
"	Per bullock load	2 10 0	4 15 0	
Coals (English)	Per ton	10 0 0	...	
" (N.S.W.)	"	None.
PROVISIONS.				
<i>Baker's.</i>				
Bread	Per 4lb loaf	0 1 6	0 1 9	
Biscuit	Per lb	0 2 0	...	
Flour	Per ton	32 0 0	34 0 0	
<i>Butcher's.</i>				
Beef	Per lb	0 0 9	...	
Mutton	"	0 0 9	...	
Veal	"	0 0 8	0 1 0	
Pork	"	0 1 0	0 1 3	
Sausages (Beef)	"	0 0 8	...	
" (Pork)	"	0 1 0	...	
<i>Confectionery.</i>				
Soda Water	Per dozen	0 4 0	...	
Lemonade	"	0 4 0	...	
Ginger Beer	"	0 4 0	...	
<i>Grocery.</i>				
Tea (family)	Per lb	0 2 3	0 3 6	
" (ration)	"	0 1 6	0 2 3	
Sugar (family)	"	0 0 4	0 0 6	
" (ration)	"	0 0 2½	0 0 3½	
" (loaf)	"	0 0 9	0 0 10	
Coffee	"	0 1 6	0 2 0	
Rice	"	0 0 3	0 0 6	
Cheese (English)	"	0 1 6	0 2 0	
" (Colonial)	"	0 1 0	0 1 6	
Bacon	"	0 1 6	...	
Salt	"	0 0 2	0 0 3	
"	Per cwt.	0 11 0	0 12 0	
Pickles	Per dozen	0 15 0	0 16 0	
Soap	Per lb	0 0 5	0 0 6	
Candles (tallow)	"	0 1 0	...	
" (sperm)	"	0 2 0	0 2 9	
<i>Market Produce.</i>				
Butter (fresh)	Per lb	0 4 0	0 5 0	
" (salt)	"	0 2 6	0 3 0	
Eggs	Per dozen	0 8 0	0 9 0	
Fowls	Per couple	0 16 0	...	
Ducks	"	0 12 0	...	
Potatoes (new)	Per lb	0 0 4½	...	
" (old)	Per cwt.	1 4 0	1 8 0	

PRICE CURRENT—(Continued).

ARTICLES.	QUANTITY.	RATE.		REMARKS.
		From	To	
<i>Market Produce—(continued).</i>				
Cabbages	Each	£ s. d. 0 1 0	£ s. d. 0 1 3	
Cauliflowers	”	0 1 3	0 1 6	
Turnips	Per bunch	0 1 0	0 2 0	
Carrots	”	0 0 6	0 1 6	
Lettuces	Each	0 0 3	0 0 9	
STOCK.				
Horses (heavy draught)	Each	100 0 0	140 0 0	
” (light draught)	”	60 0 0	80 0 0	
” (good saddle)	”	30 0 0	60 0 0	
Fat Cattle	”	15 0 0	20 0 0	
Working Bullocks	Per pair	30 0 0	45 0 0	
Fat Wethers	Each	1 0 0	1 5 0	
Store Sheep	”	0 15 0	...	
SUNDRIES.				
Bullock Drays	Each	30 0 0	50 0 0	
Horse Drays	”	30 0 0	40 0 0	
Spring Carts	”	35 0 0	45 0 0	
Dray Harness	The set	20 0 0	30 0 0	
Saddles (English)	Each	6 6 0	8 8 0	
” (Colonial)	”	7 7 0	10 0 0	
TOBACCO.				
Negrohead (in bond)	Per lb	0 1 3	0 2 6	
Cavendish ”	”	0 1 3	0 2 3	
Colonial ”	”	None.
WATER	The load	0 6 0	0 9 0	
WINES AND SPIRITS.				
Port	Per dozen	1 5 0	1 10 0	Wholesale.
Sherry	”	1 5 0	1 10 0	”
Brandy (in bond)	Per gallon	0 12 0	0 14 0	”
Gin (English) (in bond)	”	0 5 6	0 6 0	”
Whiskey (in bond)	”	0 5 6	0 7 0	”
Rum (in bond)	”	0 6 3	0 6 9	”
Porter (English)	Per hogshead	6 7 6	6 10 0	”
” ”	Per dozen	0 12 0	0 13 6	”
Ale ”	Per hogshead	10 0 0	12 0 0	”
” ”	Per dozen	0 11 0	0 13 0	”

MISCELLANEOUS CHARGES.

DESCRIPTION.	TERM OR QUANTITY.	RATE.		REMARKS.
		From	To	
ADVERTISEMENTS	Per inch	£ s. d. 0 3 0	£ s. d. 0 6 0	
CARTAGE.				
In Town	Per diem	2 0 0	2 10 0	
”	Per load	0 5 0	0 10 0	
<i>To the Gold Fields.</i>				
Mount Alexander	Per ton	80 0 0	...	Rising.
Bendigo	”	90 0 0	...	
Ballaarat	”	90 0 0	...	
Ovens	”	100 0 0	...	
McIvor	”	90 0 0	...	
HOTEL CHARGES.				
Bed and Board	Per week	3 0 0	5 0 0	
LIGHTERAGE.				
From the Bay	Per ton	0 15 0	...	

MISCELLANEOUS CHARGES—(Continued).

DESCRIPTION.	TERM OR QUANTITY.	RATE.		REMARKS.
		From	To	
LIVERY STABLES.				
Keep of a Horse	Per diem	£ s. d. 1 0 0	£ s. d. ...	
" " " "	Per week	7 0 0	...	
Hire of a Horse	Per diem	1 10 0	2 0 0	
Hire of a Horse and Gig . .	"	3 0 0	...	
Hire of a Carriage and Pair .	"	6 0 0	...	
RENTS.				
Cottages, 2 rooms	Per week	2 0 0	2 10 0	
" " 4 rooms	"	3 10 0	5 0 0	
Houses, 2 stories, 5 & 6 rooms	Per annum	300 0 0	500 0 0	
SHOEING A HORSE.				
	The set	0 16 0	...	
TOWAGE.				
River	Per ton	0 3 0	0 3 6	
WASHING				
" " " " " "	Per dozen	0 6 0	0 9 0	
" " " " " "	Per diem	0 6 0	...	

EDWARD BELL,
Immigration Agent.

Immigration Office,
Melbourne, 12th August, 1854.

No. XXIV.

STATEMENT shewing the AGE, OCCUPATION, and DISPOSAL of the SINGLE FEMALES introduced into the Colony of Victoria, at the Cost of the Fund for promoting Female Emigration, during the year 1853.

Number.	Name of Vessel.	Date of Arrival.	Number of Single Females introduced.	AGE.		OCCUPATION.			DISPOSAL.		
				Under 21 years.	21 Years and above.	Domestic Servants.	Needlewomen.	Other Occupations.	Hired as Domestic Servants.	Average Wages per annum.	Otherwise disposed of.
1	Kent . . .	21st April, 1853	41	16	25	18	11	12	27	£ s. d. 26 3 0	14
2	Madagascar	11th June, 1853	39	14	25	14	18	7	36	24 15 0	3
3	Walmer Castle	27th August, 1853	40	13	27	14	20	6	28	23 16 0	12
TOTAL			120	43	77	46	49	25	91	24 18 0	29

EDWARD BELL,
Immigration Agent.

Immigration Office,
Melbourne, 12th August, 1854.