

V I C T O R I A.

I M P O R T S — D U T I E S.

Ordered by the Council to be printed, 14th July, 1852.

C. J. LA TROBE,

Message No. 8.

Lieutenant Governor.

The Lieutenant Governor directs the following Returns to be laid on the Council Table, viz. :—

A.—Return of the quantity of Wine, Spirits, Tea, Tobacco, Sugar, and Coffee, imported into this Colony during the year ending 5th January, 1852, with the amount of Duties collected thereon.

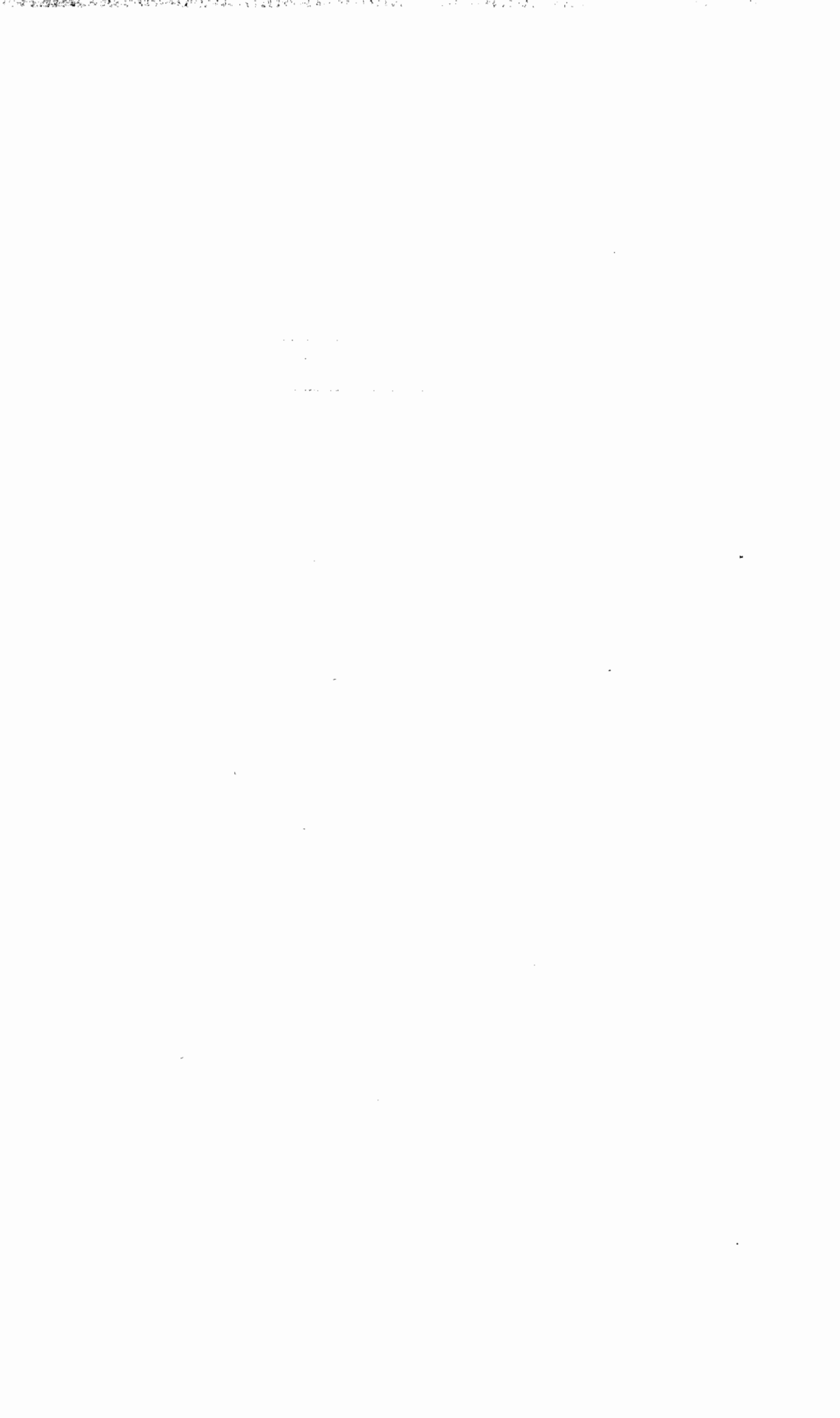
B.—Return of Duties and Charges on Goods and Shipping, collected during the year ending 5th January, 1852, which it is intended by the proposed Tariff to abolish.

Government Offices,

Melbourne, 14th July, 1852.

MELBOURNE :

PRINTED BY JOHN FERRES, AT THE GOVERNMENT PRINTING OFFICE.



661

[A.]

CUSTOMS, VICTORIA.

RETURN of the Quantity of the following Articles, imported into this Colony during the Year ending 5th January, 1852, with the Amount of Duties collected thereon.

ARTICLE.	RATE OF DUTY.	QUANTITIES	DUTY.		
			£	s.	d.
Spirits . . .	6s. per gallon.	112,274 gallons.	33,682	4	0
„ . . .	3s. 6d. „	134,608 „	23,556	8	0
Wine . . .	15 per cent. ad val.	62,087 „	2,810	2	11
Tobacco . . .	2s. per lb.	257,438 lbs.	25,743	16	0
„ . . .	1s. 6d. „	528 „	39	12	0
Tea . . .	5 per cent. ad val.	864,509 „	1,747	1	6
Sugar . . .	5 per cent. „	7,658,560 „	3,090	19	4
Coffee . . .	10 per cent. „	486,293 „	1,018	15	10
		Total . . .	£91,688	19	7

JAMES CASSELL, Collector.

Custom House, Melbourne,

8th July, 1852.

[B.]

RETURN of the total amount of the several Duties and Charges on Goods and Shipping, collected during the Year ended 5th January, 1852, which it is intended by the proposed Tariff to abolish.

ARTICLE.	AMOUNT COLLECTED.			ARTICLE.	AMOUNT COLLECTED.		
	£	s.	d.		£	s.	d.
Arrowroot and Sago	84	14	2	Isinglass	3	0	0
Alkali, Soda	1	0	0	Jewellery	6	10	0
Arms and Ammunitions	2	16	10	Leather, manufactured, viz., Boots and			
Apparel and Slops	28	10	3	Shoes	334	16	8
Ale and Porter	43	3	10	unmanufactured	22	10	4
Agricultural Implements	7	16	6	Lime	0	11	6
Bags and Sacks	45	19	10	Lime Juice	1	3	6
Boats	2	0	0	Liquorice	2	1	10
Bone, Fish	0	2	0	Lead, Sheet	5	2	0
Bricks	2	16	4	" Pipes	0	4	0
Blankets and Woollens	35	0	5	Linens	3	14	0
Butter and Cheese	568	12	10	Live Stock, viz. Deer	0	4	0
Brassware	0	12	0	" Horses	299	13	9
Bread	63	5	5	" Horned Cattle	2	6	0
Brushware	4	11	8	" Sheep	48	12	6
Bran and Pollard	66	5	9	" Pigs	0	1	0
Basketware	7	14	10	Malt	54	7	7
Carriages	217	10	0	Machinery	7	19	7
Casks and Staves	113	1	6	Matches	4	8	0
Canes	6	1	6	Matting	5	7	0
Candles	34	19	10	Marble	4	0	0
Cement	2	4	0	Millstones	3	4	0
Coach Furniture	11	6	0	Millinery	21	14	0
Coals	192	19	4	Oars	5	2	10
Confectionary and Preserves	74	17	3	Oilmen's Stores	243	1	8
Carpeting	1	12	0	Onions	1	2	3
Cordage	321	17	8	Oil, Black	32	16	0
Corks	26	12	2	" Castor	0	8	6
Colours	6	0	0	" Cocoanut	0	16	0
Cottons	41	14	0	" Linseed	5	1	8
Copper	9	16	0	" Salad	9	7	0
Cradles, (Gold)	2	10	0	" Sperm	64	2	0
Drugs	28	2	1	" Rape Seed	0	8	0
Earthenware	73	4	1	Oakum	3	18	0
Fruit, Dried	559	7	2	Oilcloth	0	16	0
" Green	219	11	8	Paintings and Engravings	6	0	0
Fish	20	3	3	Painters' Materials	5	6	0
" Shell	3	15	11	Pepper and Spices	68	16	9
Furniture	75	16	1	Pitch and Tar	16	12	3
Glasses, Looking	3	0	0	Potatoes	892	5	3
Glassware	3	1	0	Provisions, Salt	150	8	5
Glue	2	0	0	" Preserved	5	2	3
Grain and Meal, viz.: Barley	53	19	6	Perfumery	5	10	10
" Flour	2265	10	1	Pipes, Tobacco	4	4	4
" Maize	191	11	6	Saddlery	22	18	6
" Oats	406	6	5	Salt	15	3	6
" Oatmeal	31	10	8	Silks	50	0	0
" Peas	1	16	11	Seeds	7	11	9
" Rice	152	1	2	Skins, Opossum	8	13	6
" Tares	0	4	0	" Kangaroo	32	0	6
" Wheat	767	17	8	" Sheep	2	17	0
Grindstones	1	0	5	Soap	15	13	11
Guano	0	0	6	Starch and Blue	1	13	0
Hardware	54	3	4	Steel	4	0	0
Hair, Horse	4	8	0	Stationery	45	3	1
Hay	109	16	9	Stone, Building	49	13	3
Hats and Caps	56	11	0	Tallow	0	3	0
Hops	55	1	0	Tarpaulins	2	4	0
Honey	1	4	7	Tinware	9	16	6
Hosiery	31	6	0	Timber, Deals	1304	4	2
Haberdashery	58	11	0	" Sawn	1587	17	11
Iron, Sheet, Bar, and Rod	1	0	0	" Blackwood	3	5	1
" Nails	29	6	0	" Camphorwood	0	12	0
Ironmongery	37	15	1	" Felloes	0	8	1
Instruments, musical	27	18	5	" Laths	128	10	2

ARTICLE.	AMOUNT COLLECTED.		
	£	s.	d.
Timber, Paling	663	8	2
“ Posts and Rails	65	5	4
“ Scantling	21	4	4
“ Staves	85	19	8
“ Spars	5	16	0
“ Shingles	192	10	0
“ Spokes	1	8	7
“ Ship's Fittings	2	14	4
“ Treennails	0	7	6
Toys and Turnery	15	9	0
Turpentine and Varnish	8	18	4
Umbrellas	0	2	0
Unenumerated	375	14	1
Vinegar	13	3	4
Vegetables	12	12	9
Watches and Clocks	43	7	7
Whiting	1	3	6
Woodenware	58	14	7
Wool (Berlin)	7	0	0
Zinc	7	18	0
Total Duties	14,572	8	5

(Signed)

Custom House,
Melbourne, 8th July, 1852.

ARTICLE.	AMOUNT COLLECTED.		
	£	s.	d.
Wharfage Rates (Rent)			
“ Melbourne	1040	0	0
“ Geelong	1566	5	3
“ Portland	337	17	6
			2944 2 9
Harbour Dues, Melbourne	287	0	0
“ Geelong	38	10	0
			325 10 0
Entrance and Clearance,			
“ Melbourne	661	0	0
“ Geelong	161	5	0
“ Portland	60	7	6
“ Port Fairy	55	10	0
“ Port Albert	96	7	6
			1034 10 0
Light House Dues,			
“ Melbourne	1098	6	1
“ Geelong	141	4	1
“ Portland	2	0	4
“ Port Fairy	7	15	2
			1249 5 8
Water Police, Tonnage Duty,			
“ Melbourne	850	17	3
“ Geelong	97	5	6
			948 2 9
Grand Total	£21,073	19	7

JAMES CASSELL,

Collector.