

# **Public Accounts and Estimates Committee 2012-13 Budget Estimates hearing**



## **Victorian Budget** 2012-13

**The Hon. Gordon Rich-Phillips MLC  
Assistant Treasurer  
Friday 18 May, 2012**

# Core responsibilities – Assistant Treasurer

---

- Workplace Accident Compensation and Rehabilitation;
- Occupational Health and Safety;
- Transport Accident Compensation and Rehabilitation;
- Managing the Government's motor vehicle fleet;
- Purchasing and procurement arrangements for the Victorian Government;
- Facilitating acquisition, reuse or disposal of Victorian Government land and property;
- Overseeing WoVG accommodation planning & policies;
- Overseeing superannuation policy for the State; and
- Regulation of Victoria's registered housing agencies.

# Core responsibilities – Assistant Treasurer

---

## Department of Treasury & Finance outputs:

- Budget & Financial Policy Advice
- Economic & Financial Policy
- GBE Performance Monitoring & Financial Risk Management
- Government Services
- Land and Infrastructure Investment Management

## Statutory Authorities:

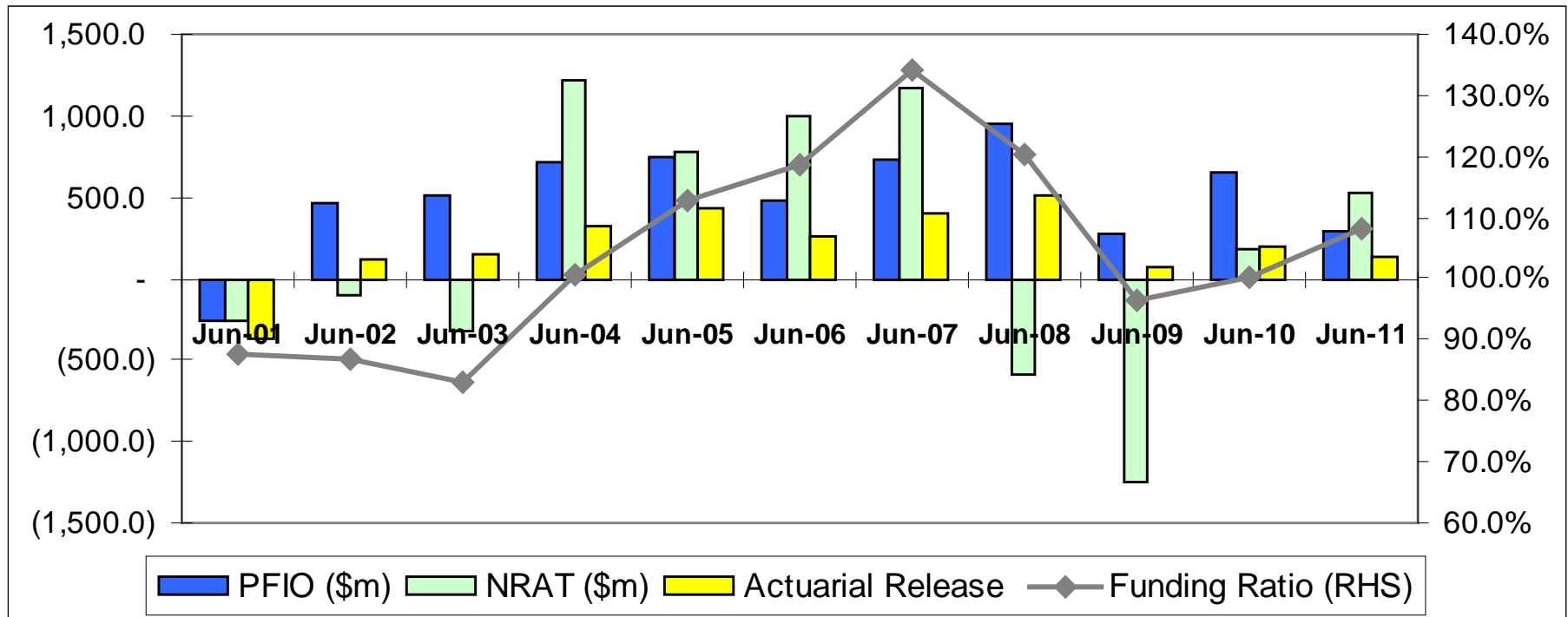
- Emergency Services Superannuation Scheme (ESSS)
- Transport Accident Commission (TAC)
- Victorian WorkCover Authority (VWA)

## State Body:

- CenITex

# Victorian WorkCover Authority

## Financial Performance

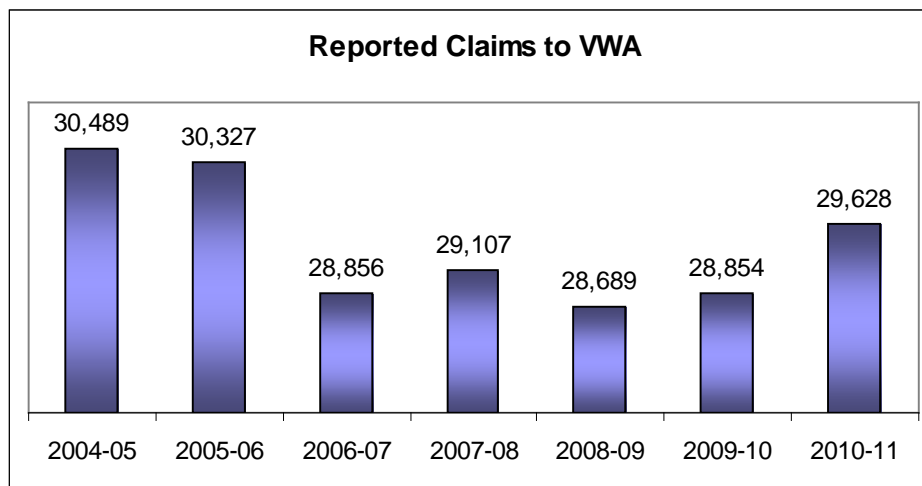
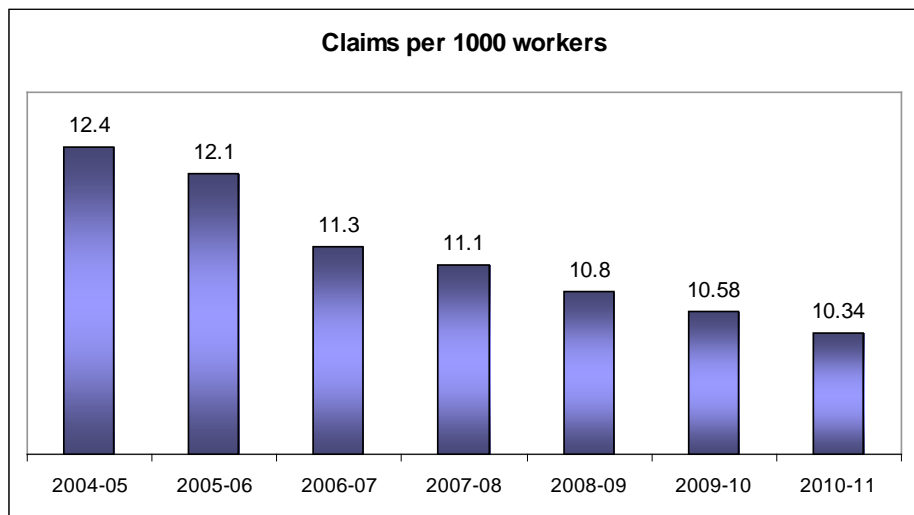


Target funding ratio range up to 2009-10: 90%-110%

from 2010-11: 85%-115%

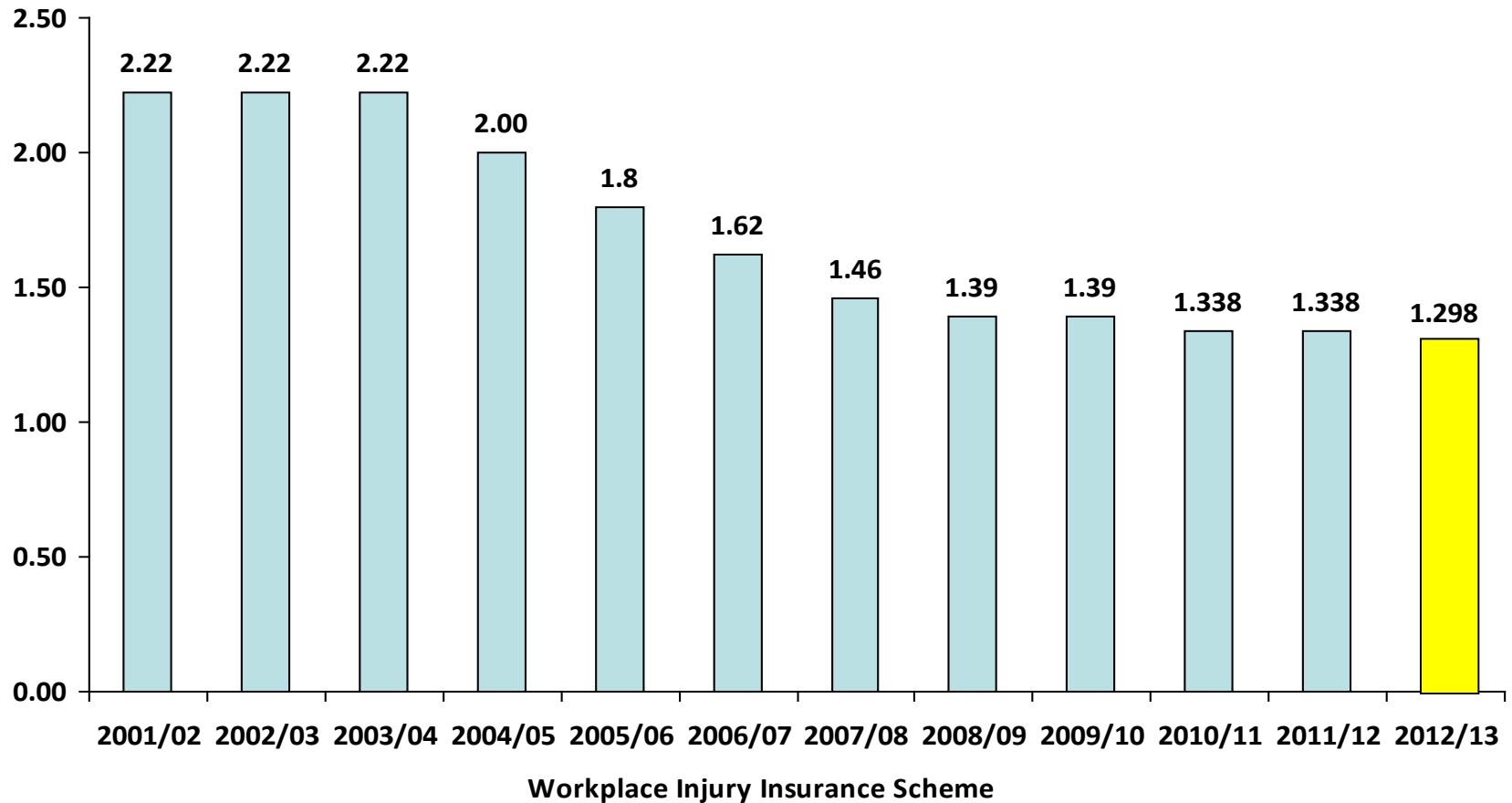
# Victorian WorkCover Authority

## OHS Performance



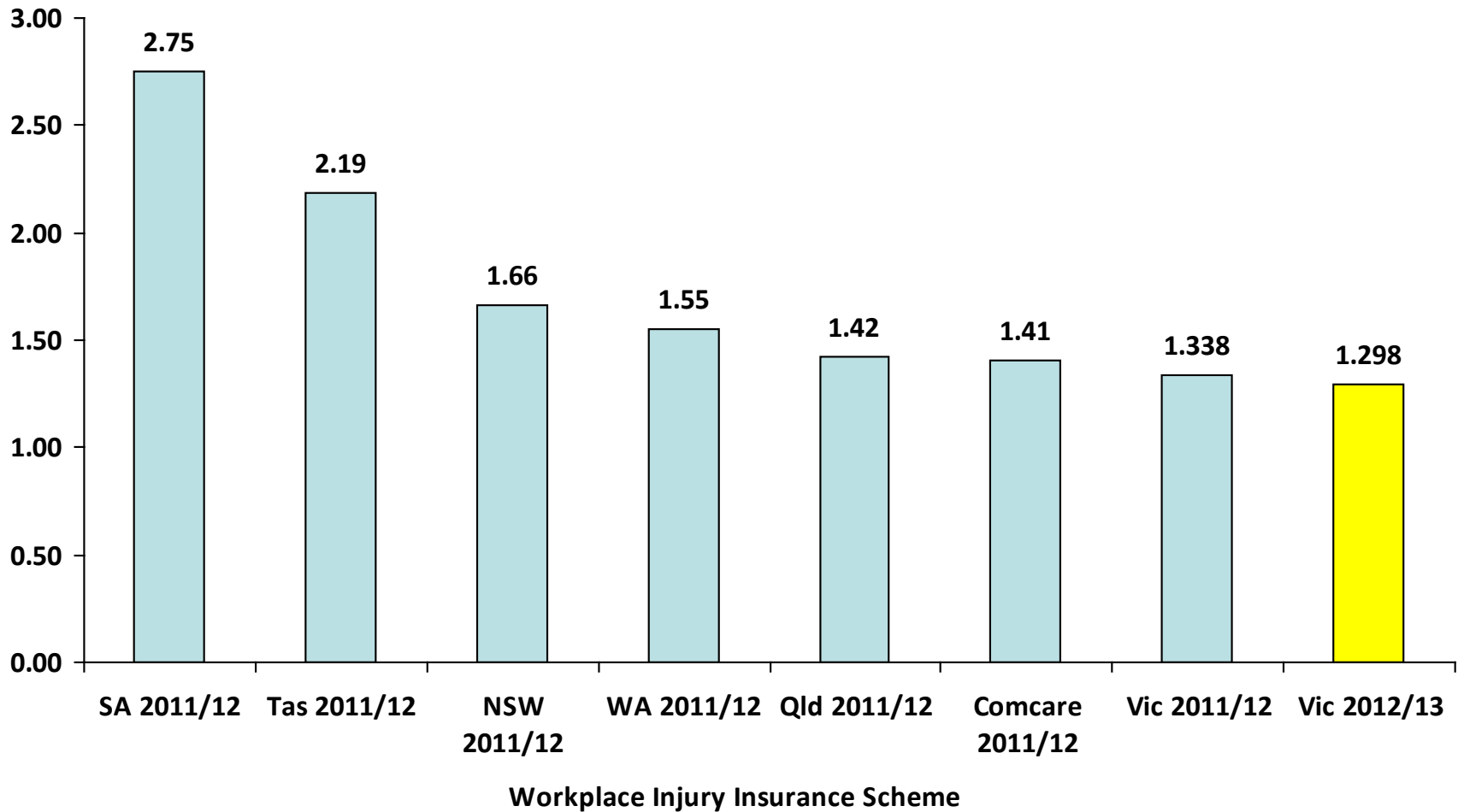
# Victorian WorkCover Authority

## VWA premium rates over the last decade



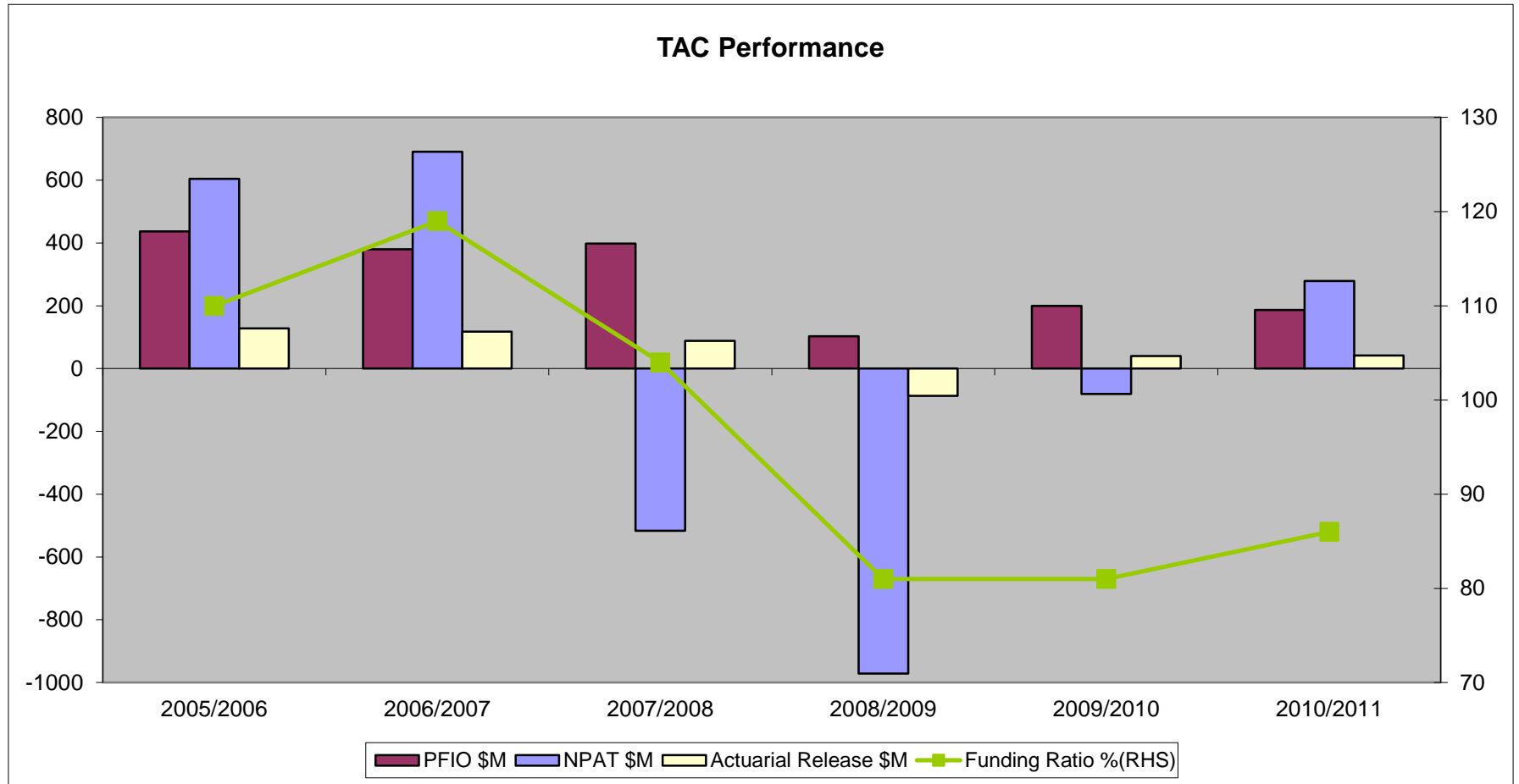
# Victorian WorkCover Authority

## Comparison of average Australian premium rates



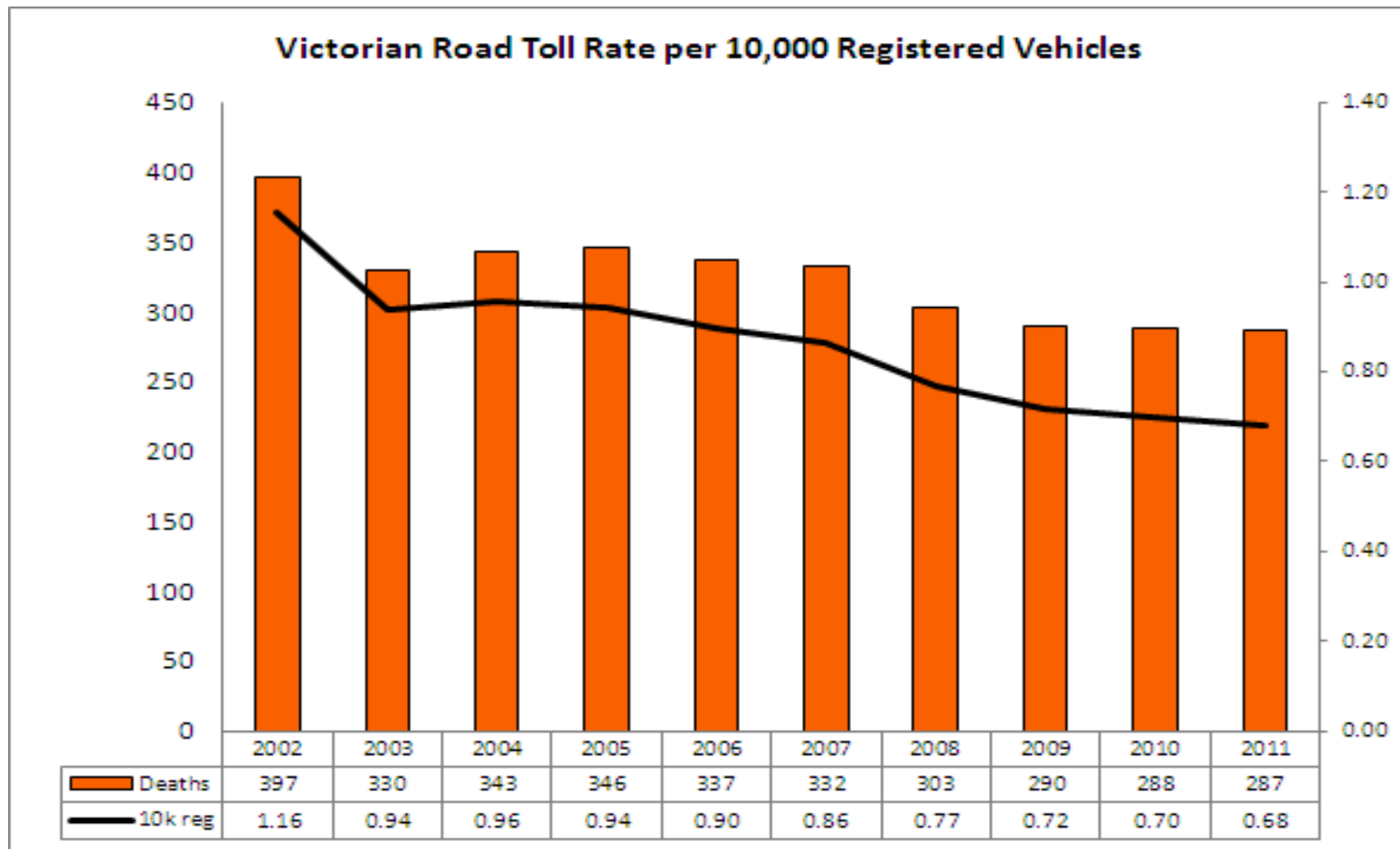
# Transport Accident Commission

## Financial Performance





# Transport Accident Commission



# Government Services

---

## Fleet

- Local vehicle manufacturing
- Cost of fleet

## Procurement

- WoVG contracts
- The Victorian Government Purchasing Board

# Government Services *cont...*

---

## Accommodation

- Portfolio size
- Workplace density
- Vacancy rates
- Cost

## Efficient Technology Services

# Other responsibilities

---

- Superannuation
- Land & Property
- Better Financial Management Policy
- Housing Registrar