



Public Accounts and Estimates Committee Minister for Community Development

Peter Batchelor MP
2009-09 Budget Estimates Hearing

Content

1. Context : A Fairer Victoria
2. Moving Forward:
 - Place based investments
 - Volunteering and Community Enterprise
 - Financial Inclusion
 - Victorian Government Action Plan
3. Community Support Fund



Context A Fairer Victoria 2008

Priority Area 1 **Getting The Best Start** **\$163 Million**

Includes:

\$69M for Healthier Mothers and Babies

**\$29M for Early Childhood Intervention
for Children with a Disability**

**\$24M for Victorian Family Violence
Reforms**



Context

A Fairer Victoria 2008

Priority Area 2

Improving Education and Helping People Into Work

\$218 Million

includes:

\$71M for School Reform Resourcing

\$33M for Expanded Student Support

\$22M for Literacy Improvement Teams



Context

A Fairer Victoria 2008

Priority Area 3

Improving Health and Wellbeing

\$409 Million

includes:

\$233M for Enhancing Disability Services and Outcomes

\$20M for Reducing the Burden of Chronic Disease

\$76M for Improving Mental Health Services



Context

A Fairer Victoria 2008

Priority Area 4

Developing Liveable Communities

\$224 Million

includes:

\$116M for Concession increases

\$17M for Refugee Support Strategy

\$29M for Improving Access to Homelessness and Housing Services

Place-based Investments

- Community Renewal
- Community Building Initiative
- Transport Connections
- Various Projects



Volunteering and Community Enterprise

- Volunteer Small Grants
- Volunteer Support Grants
- Support for volunteers delivering emergency relief in drought-affected areas
- Developing a comprehensive volunteering and participation strategy
- Support for community enterprises
- \$2m to establish a Community Enterprise 'Catalyst' to help community enterprises start up and succeed.

Financial Inclusion

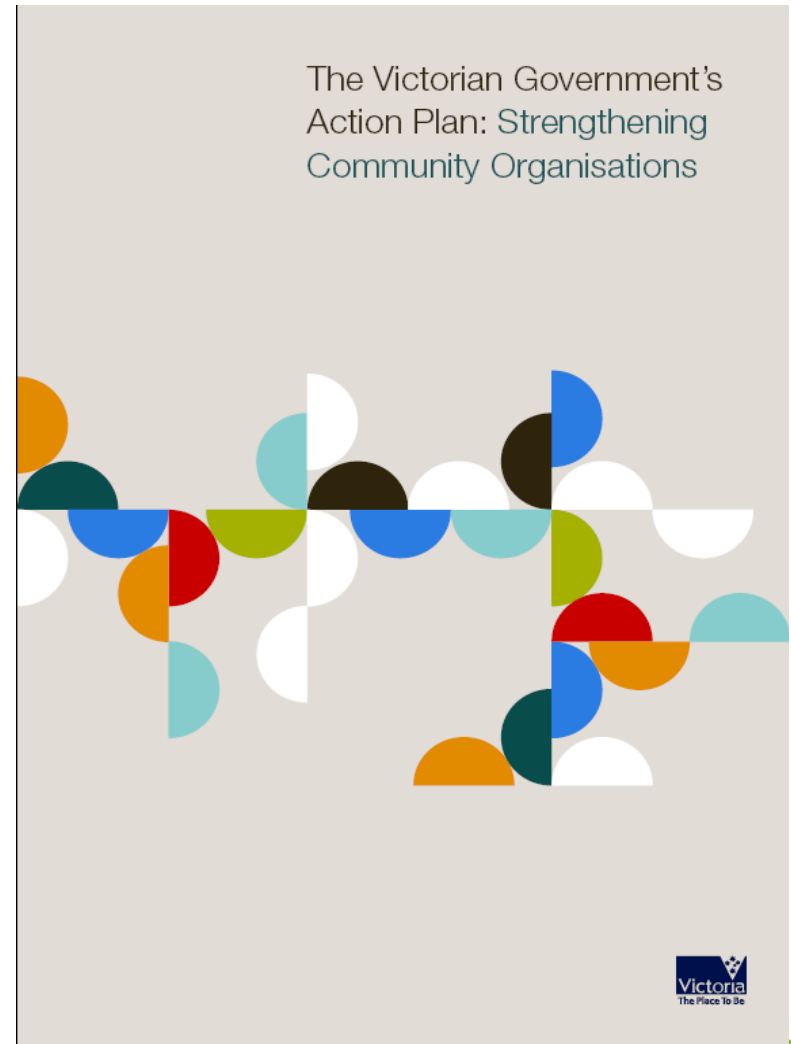
- No Interest Loans Schemes (NILS)
- Partnership with NAB and Good Shepherd Youth and Family Services

Strengthening Community Organisations

The Action Plan: 5 themes

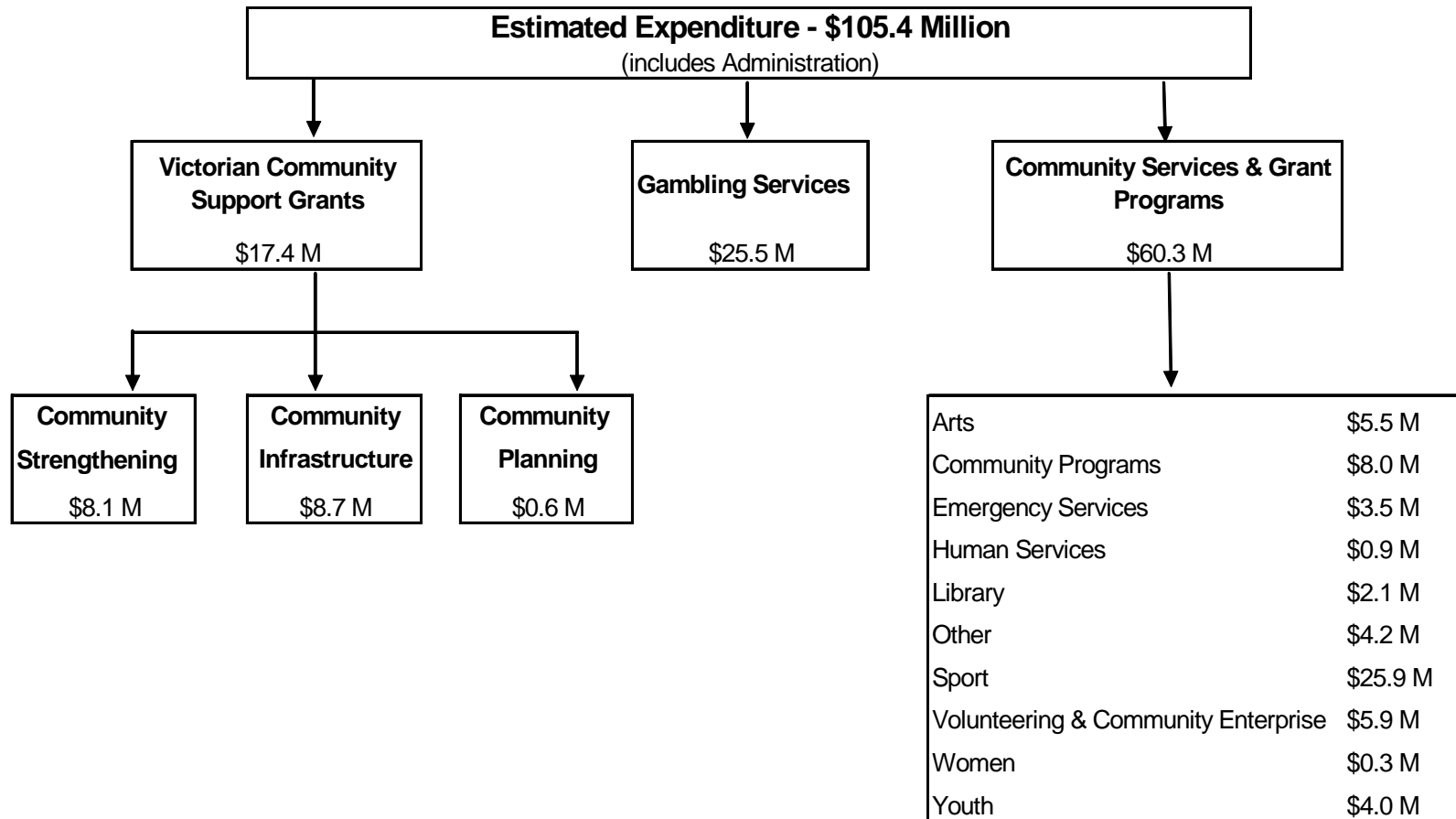
- Reducing the regulatory burden and strengthening interaction with Government
- Building the capacity of community organisations
- Supporting innovation and growth
- Enhancing the role of NFPs in local community life, and
- Recognising community organisations and coordinating effort across government

Total investment: \$13.87m



Investment Community Support Fund

Estimates 2007-08



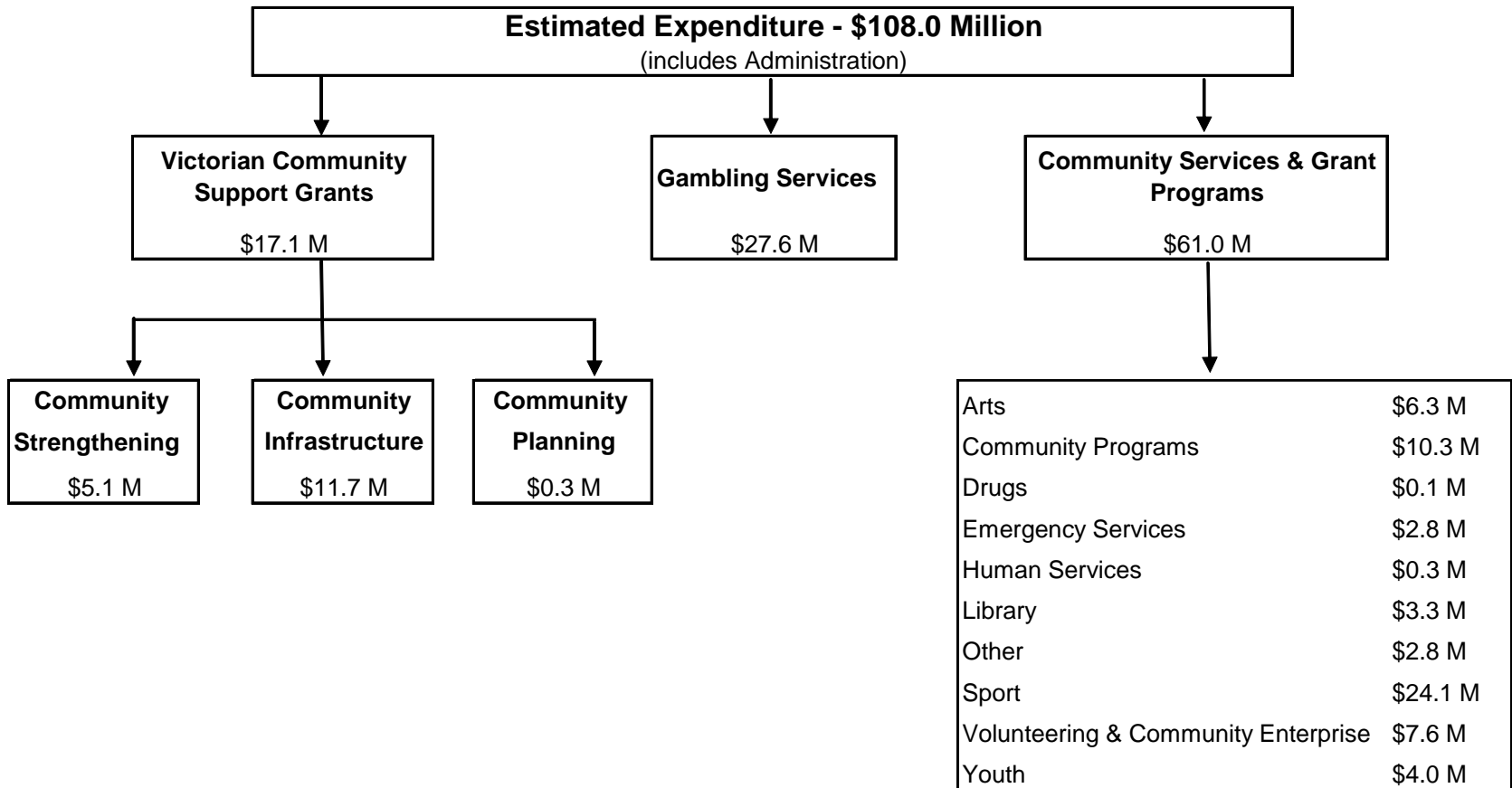
Community Support Fund

Expenditure 2007-08

- \$25.5M for Gambling Services to promote healthy communities, encourage more responsible gambling and fund problem gambling services.
- \$3.5M for local state emergency services, Country Fire Authority, lifesavers and coast guard groups for specialist emergency protection and rescue equipment.
- \$8.0M for Community Programs ie: the Community Renewal initiative which brings residents, businesses, government and local organisations together to help transform their community into a place of opportunity and activity.

Community Support Fund

Estimates 2008-09



Community Support Fund



Expenditure for 2008-09

- Estimated expenditure for 2008-09 is \$108M. This forecast includes funding for the following programs:
- \$10.3M in Community Programs ie: the Modernising Neighbourhood Houses program, designed to improve the infrastructure of neighbourhood houses in areas of highest need.
- \$24.1M in Sport, including the Better Pools initiative designed to ensure that all Victorians have access to quality aquatic and recreational facilities.
- \$17.1M for Victorian Community Support Grants which includes joint commitments with other community programs across government to increase access to community facilities.