



# Employment Portfolio

Presentation to Public Accounts & Estimates  
Committee

5 July 2006

Jacinta Allan MP

Minister for Employment & Youth Affairs  
Minister for Education Services

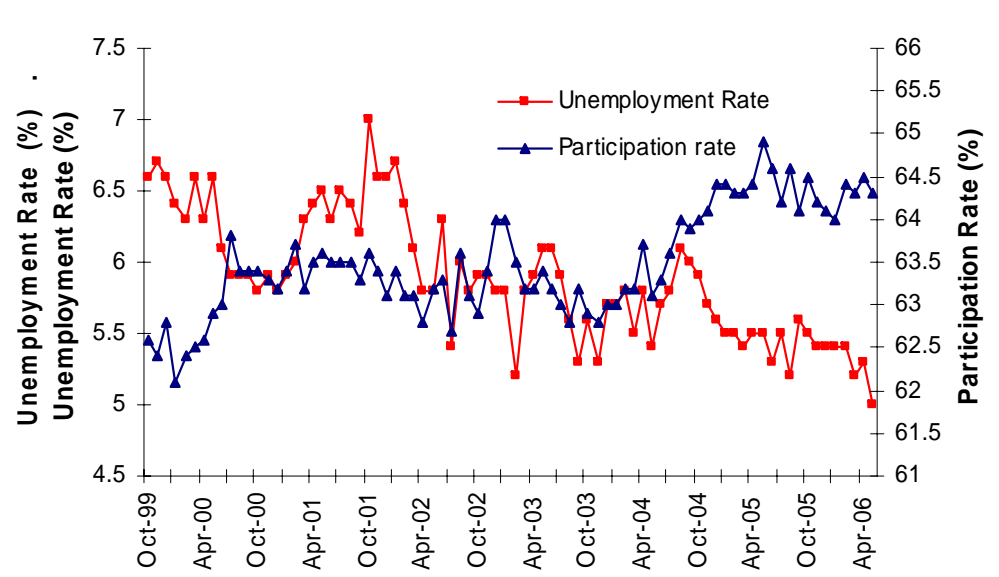
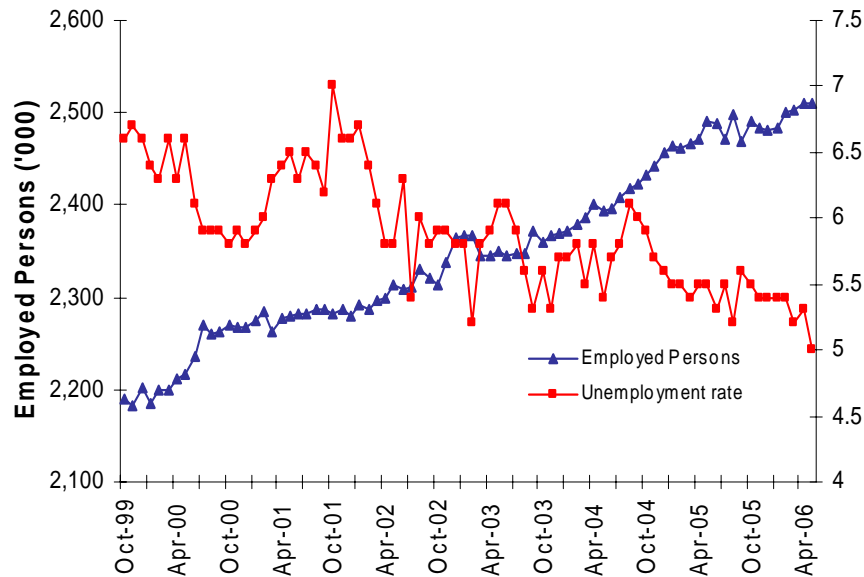
## Key Achievements

- Refocusing of employment programs – *Workforce Participation Partnerships*
- 26.4% share of Australia's skilled and business migration
- Record no. of unique visitors to *LiveinVictoria* website
- Over \$550m of investment and over 2,900 jobs through Business Migration
- National first in the *Regional Skills Shortage Survey Project*
- Workforce Participation Taskforce Report



# Victorian Labour Market: Continuing Strong Performance

Employed Persons, Unemployment Rate, Participation Rate, Oct 99 to May 06



Department for Victorian Communities

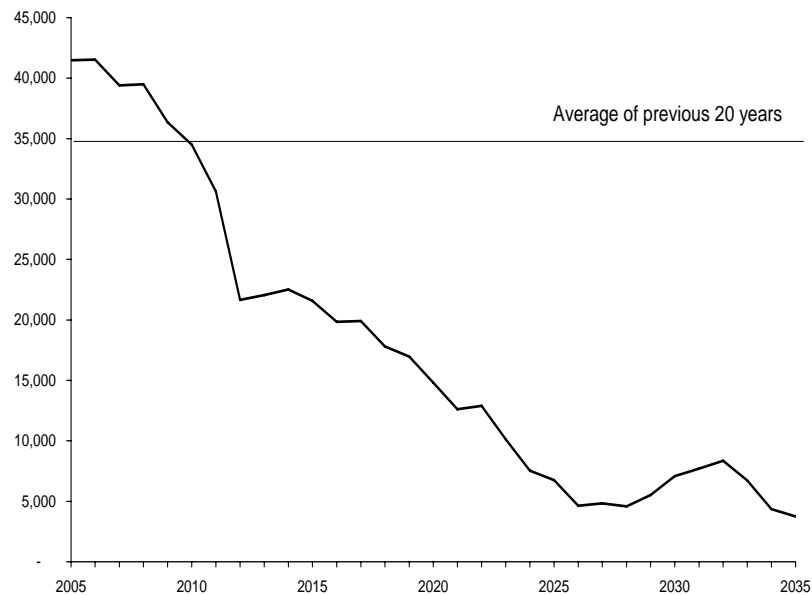
# Regional Skills Shortage Survey Project

- National first
- Partnership between State, Local and Commonwealth
- Assisting planning at local level in 11 regions
- *Findings:*
  - Employers generally positive about growth and employment in next 12 months
  - Shortages from lower skilled to higher skilled occupations



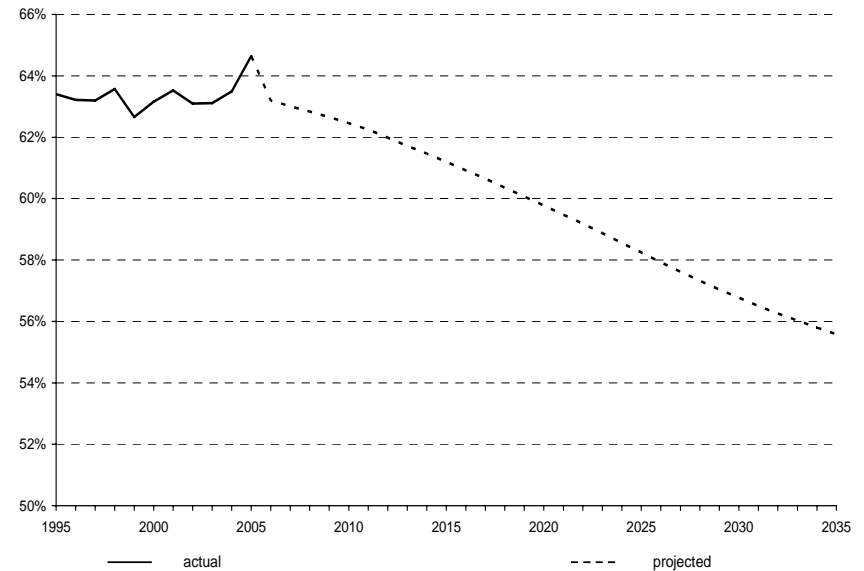
# Victorian Workforce Participation Strategy

## Projected growth in Victoria's working age population, 2005-2035



Source: Department of Sustainability and Environment (2004), *Victoria in Future*.

## Actual and projected workforce participation rates, Victoria 1995-2035



Sources: ABS, Labour Force Australia, Spreadsheets, Cat No 6202.0.55.001 and P. Dawkins, G. Lim and P. Summers (2005) *The impacts of population ageing on labour force participation*, final report to the Department of Treasury and Finance.



Department for Victorian Communities

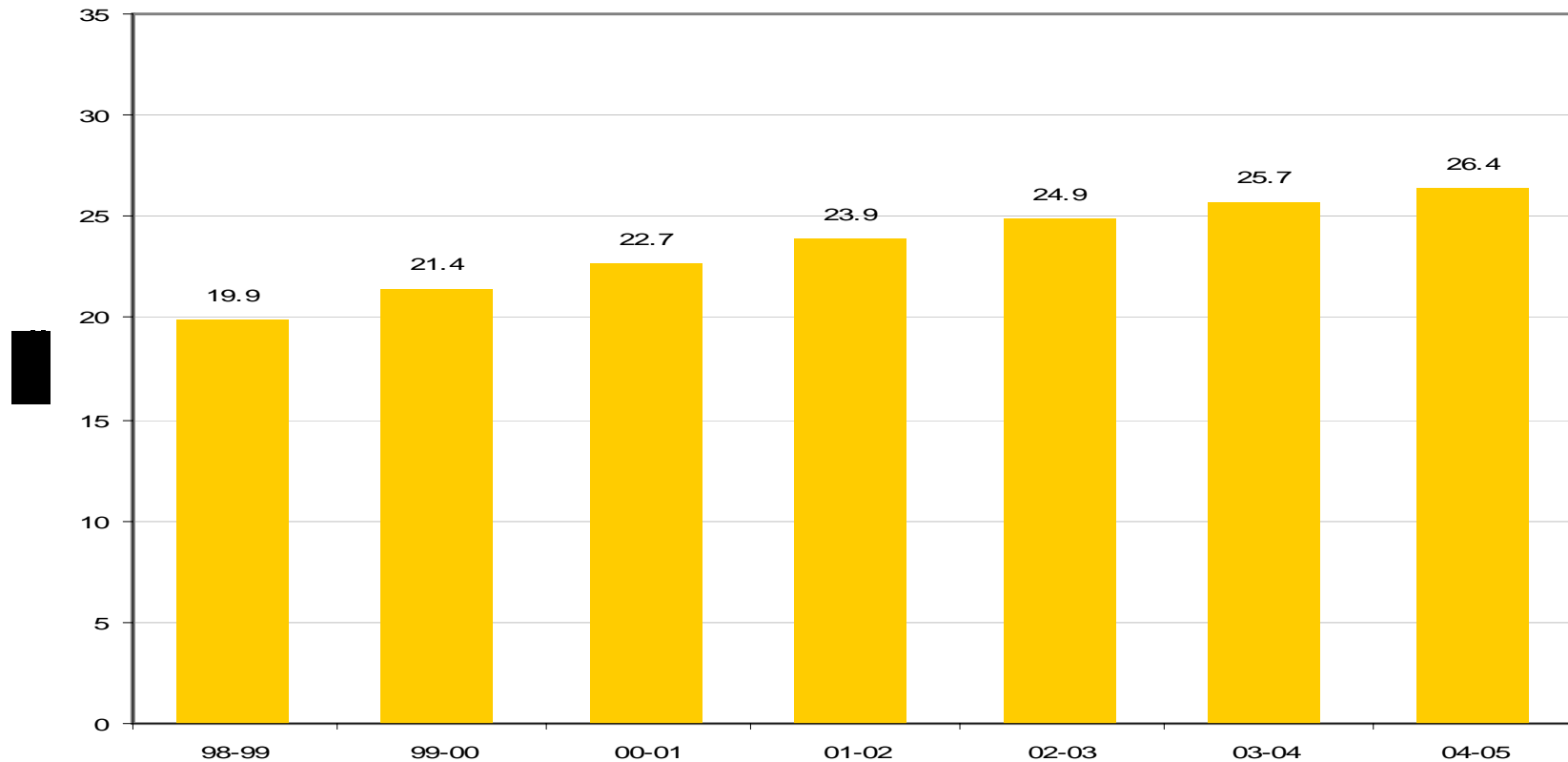
## Workforce Participation Partnerships

- Approval of 51 Partnerships delivering over 1,440 employment outcomes across the State
- More than one third to regional Victoria
- Industry/employer involvement in all Partnerships
- Provision of individually tailored assistance: training, work experience, mentoring
- Wide range of skills needs: building, manufacturing, engineering, transport, child care, aged care
- Areas of higher socio-economic being addressed including Neighbourhood Renewal Areas



# Skilled and Business Migration

## Victoria's Share of Australia's Skilled Migrant Arrivals, 1998-99 to 2004-05



Source: DIMA Settlement Database, August 2005



*Department for Victorian Communities*

## CONCLUSION

- A very strong Victorian labour market
- Need to respond to key labour market challenges
- Workforce Participation Strategy - focus on the medium and longer terms
- Positive start to *Workforce Participation Partnerships* – responding to employer needs
- Growing share and value of skilled and business migrants

