

2010-11 PAEC Presentation

Department of Education and Early Childhood Development

Hon. Maxine Morand MP

Minister for Children and Early Childhood Development





Investing in services for Early Childhood Development, and children with a disability



Continuing Reforms

\$82.6 million package of new early childhood initiatives:

- \$63.1 million to meet demand for kindergarten places
- \$14.0 million to extend Victoria's Children's Capital Program
- \$3.5 million to Improve Victoria's Early Childhood Workforce
- \$2.0 million for Maternal and Child Health Line and Parent Line



Also:

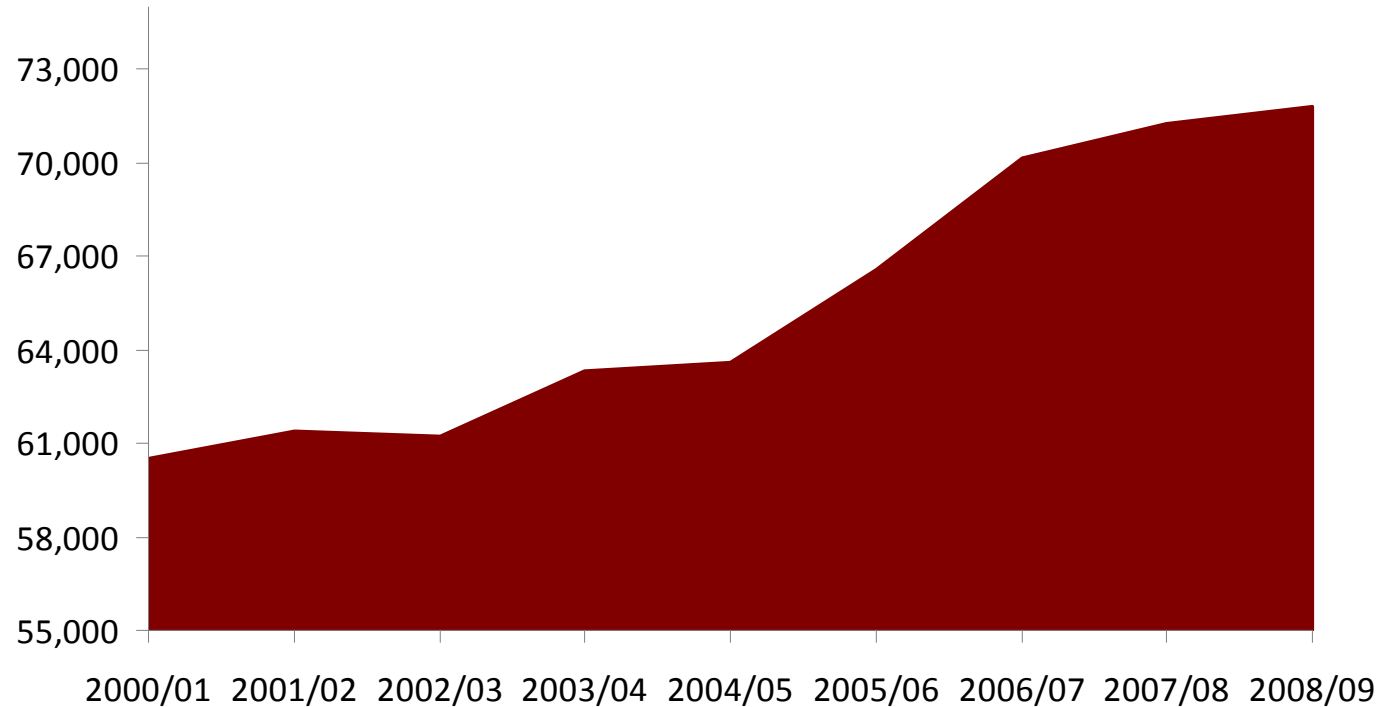
- **\$90.1 million** boost for children with a disability



Responding to Growing Demand...

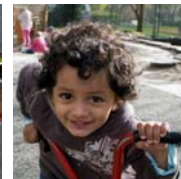
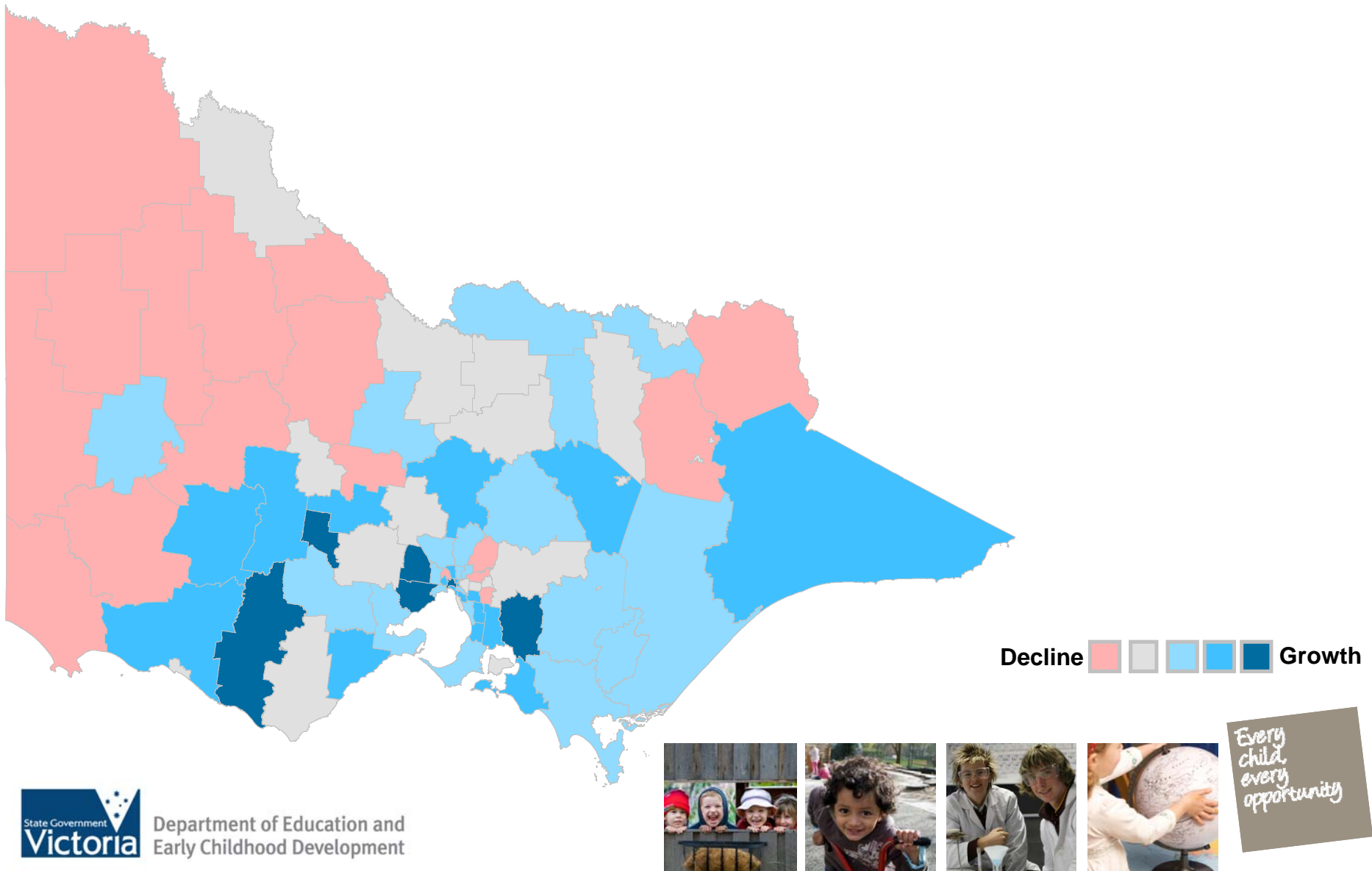


**Maternal and Child Health Birth Notices
Victoria: 2000-01 to 2008-09**



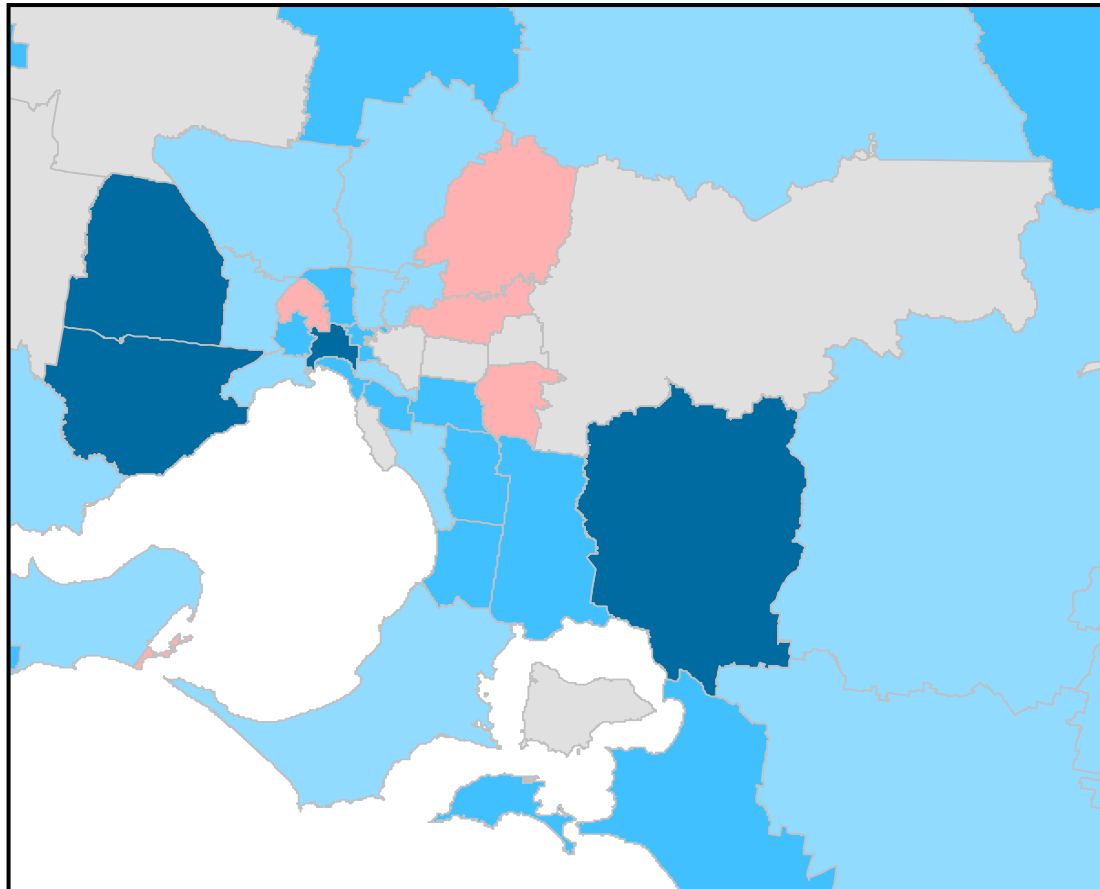
The picture for births is mixed across Victoria...

% change in birth notices 2000/01 to 2008/09

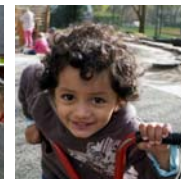


The picture for births is mixed across Victoria...

% change in birth notices 2000/01 to 2008/09



Decline      Growth



Responding to Growing Demand...

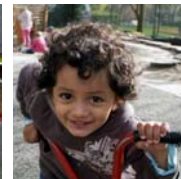
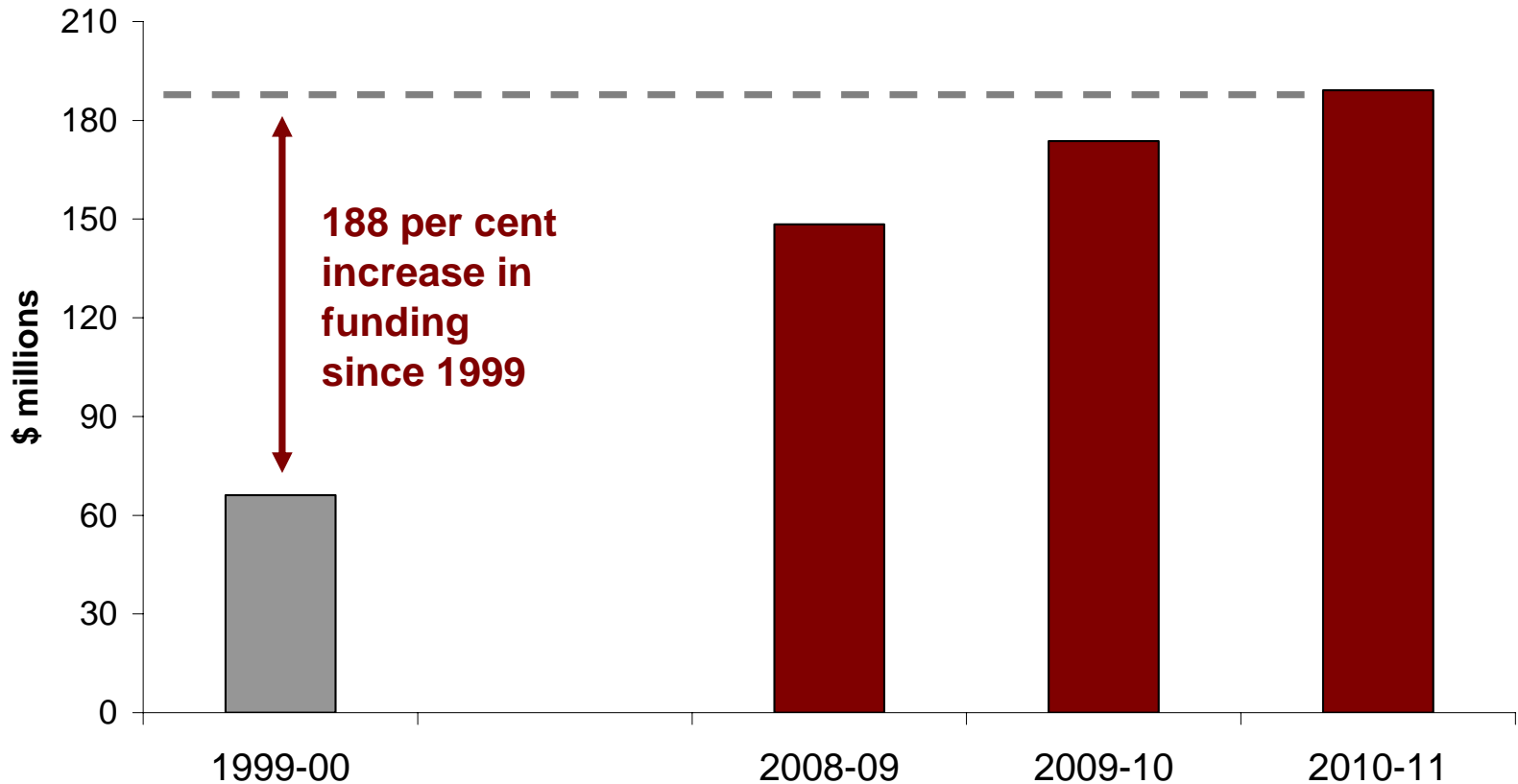


- The Government has responded to growing demand by providing new services for children in the early years of life and their families
- Since 1999, we have increased funding for Maternal and Child Health Services by 163 per cent



Responding to Growing Demand...

Funding for Kindergarten Services

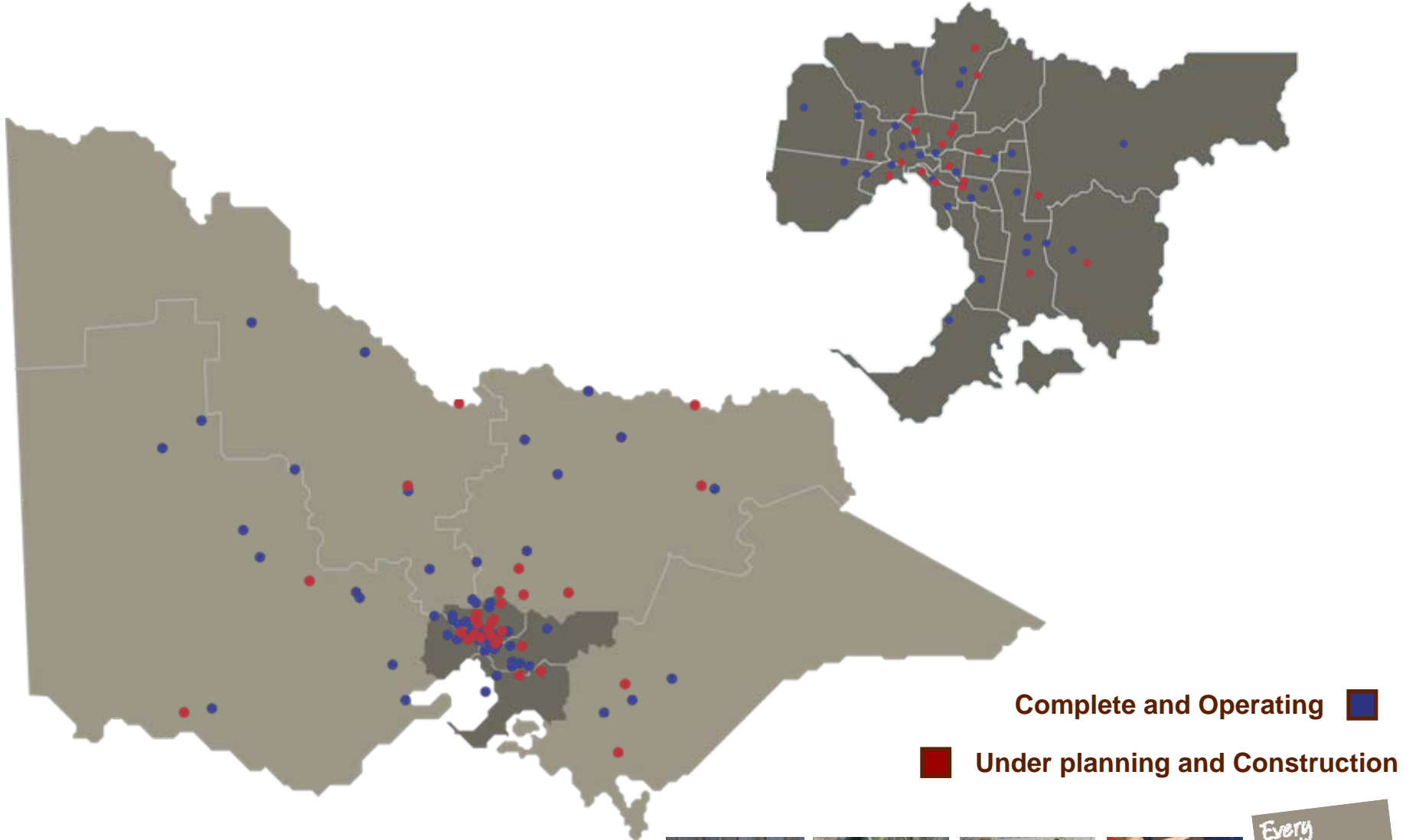


Responding to Growing Demand...

- \$63.1 million allocated to meet growing demand for kindergarten services in the year before school
- \$3.5 million to improve Victoria's early childhood workforce



Investing in Quality Early Years Facilities

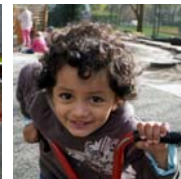


Capital initiatives



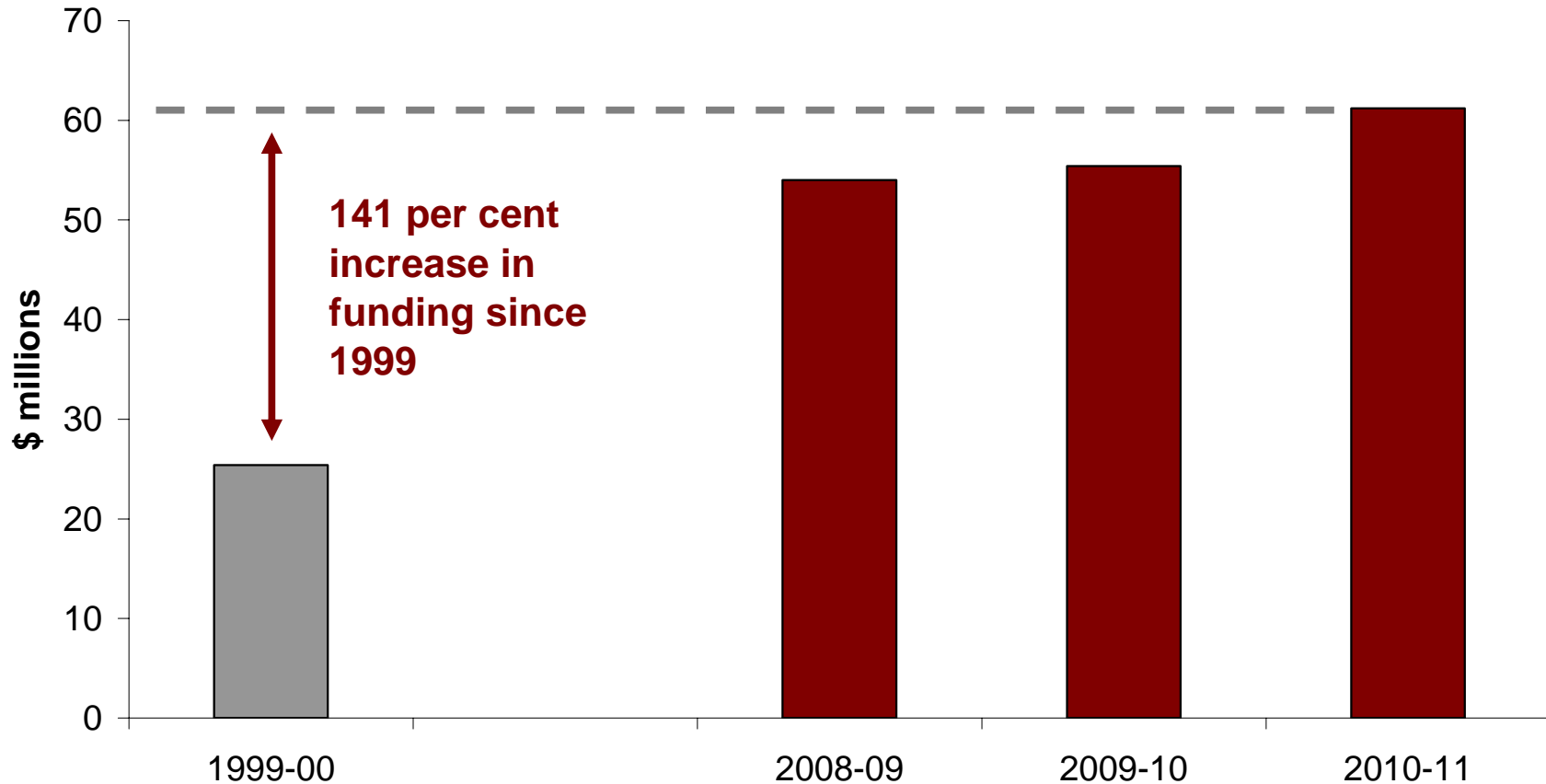
Mernda Villages Children's Centre

- **\$14.0 million** to extend Victoria's Children's Capital Program
- **\$9.2 million** to establish and operate a new Deaf Education Institute
- **\$4.4 million** to create specialist facilities in mainstream schools



Support for Children with Disabilities

Funding for Early Childhood Intervention Services



Support for Children with Disabilities

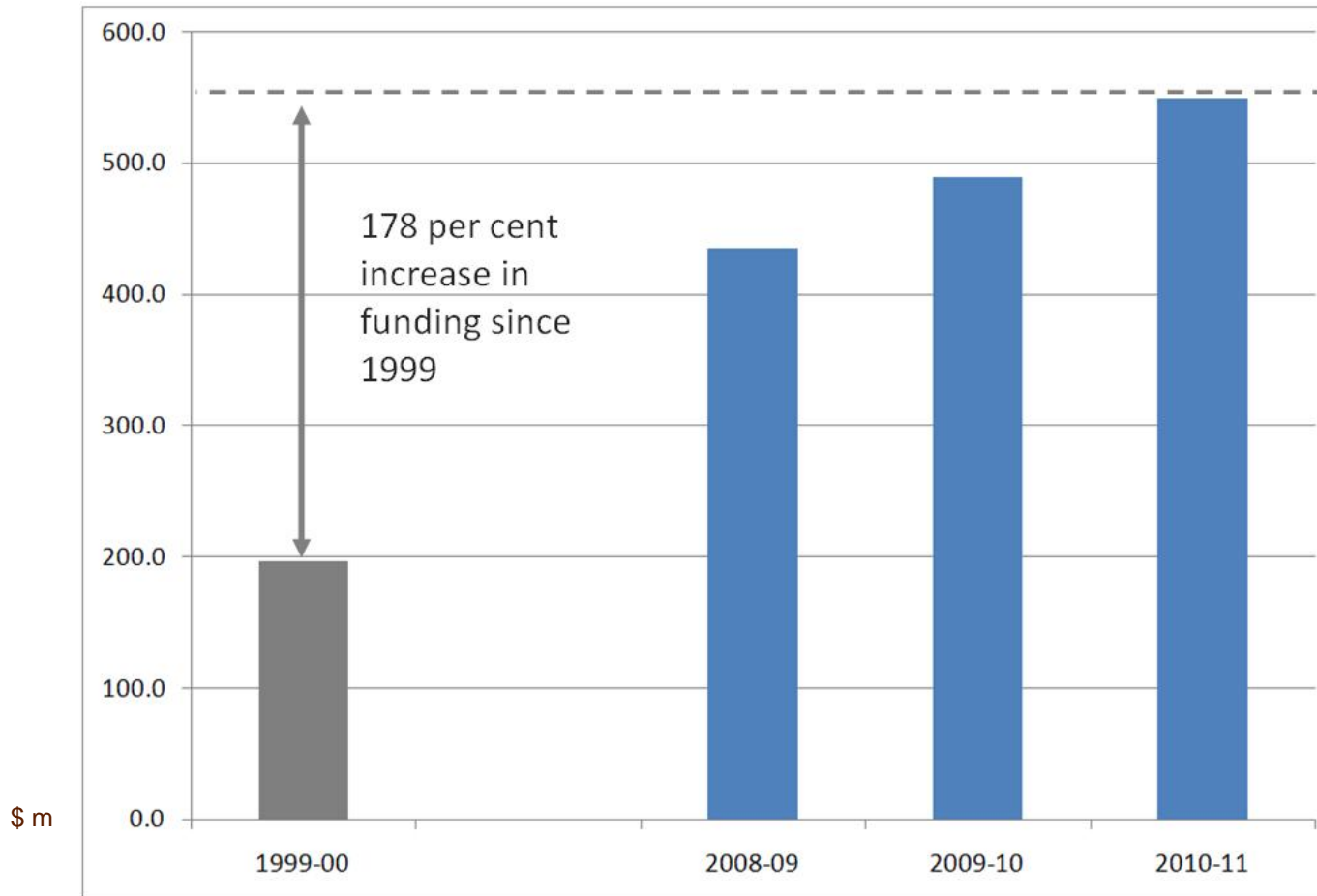


- \$38.4 million increase for Early Childhood Intervention Services to support children and their families



Support for Children with Disabilities

Funding for Program for Students with a Disability



Early Childhood - an ambitious reform agenda

System improvement

Partnerships with parents and communities

Workforce reform



Massive investment in education and early childhood development



Since 1999:

- Budget boosted from \$144.9m to \$414.9m
- \$677m of new initiatives announced

