

Suburban Rail Loop

Harriet Shing MP

FRIDAY 6 JUNE 2025



VICTORIA
State
Government

Department
of Transport
and Planning

Meeting the challenges: more homes in the right places

By the 2050s, Melbourne will be a city of **nearly nine million people**.

The Suburban Rail Loop will help manage this growth by:

- Delivering more homes and housing choice
- Taking pressure off outer suburbs, reducing congestion
- Connecting communities to the jobs and services they need
- Driving economic growth by enhancing productivity.





More homes, more housing choices

As Australia's largest housing and transport project, the Suburban Rail Loop will deliver:



70,000 more homes where people want to live



On the door-step of world class public transport



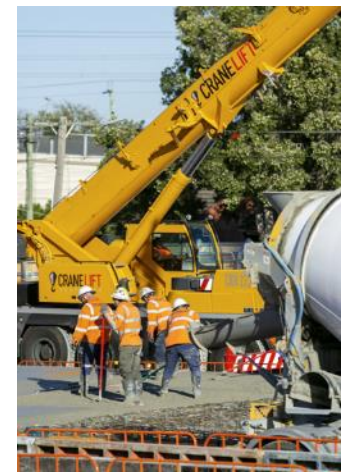
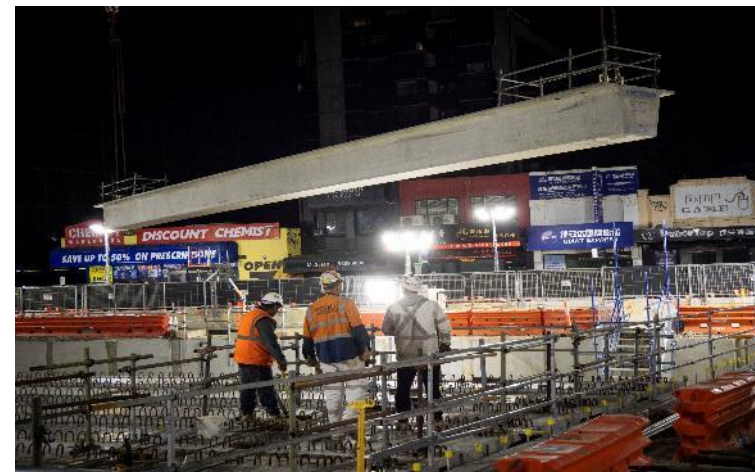
Close to jobs, education and services like healthcare



SRL East – Contract progress and milestones

The Suburban Rail Loop is on time and on budget, with major works steaming ahead across the six station sites and stabling facility.

- **Tunnelling packages:**
 - **North:** Glen Waverley – Box Hill (Terra Verde)
 - **South:** Cheltenham – Glen Waverley (Suburban Connect)
- **Procurement underway:**
 - World-leading consortia bidding to build SRL East stations
 - Preferred bidder identified for Linewide package (TransitLinx)



SRL East – Cheltenham to Box Hill

The Suburban Rail Loop will have multi-generational benefits that will mean Victorian's can find a home, close to jobs and services, and travel with less congestion.



26 kms twin tunnels
operating in 2035



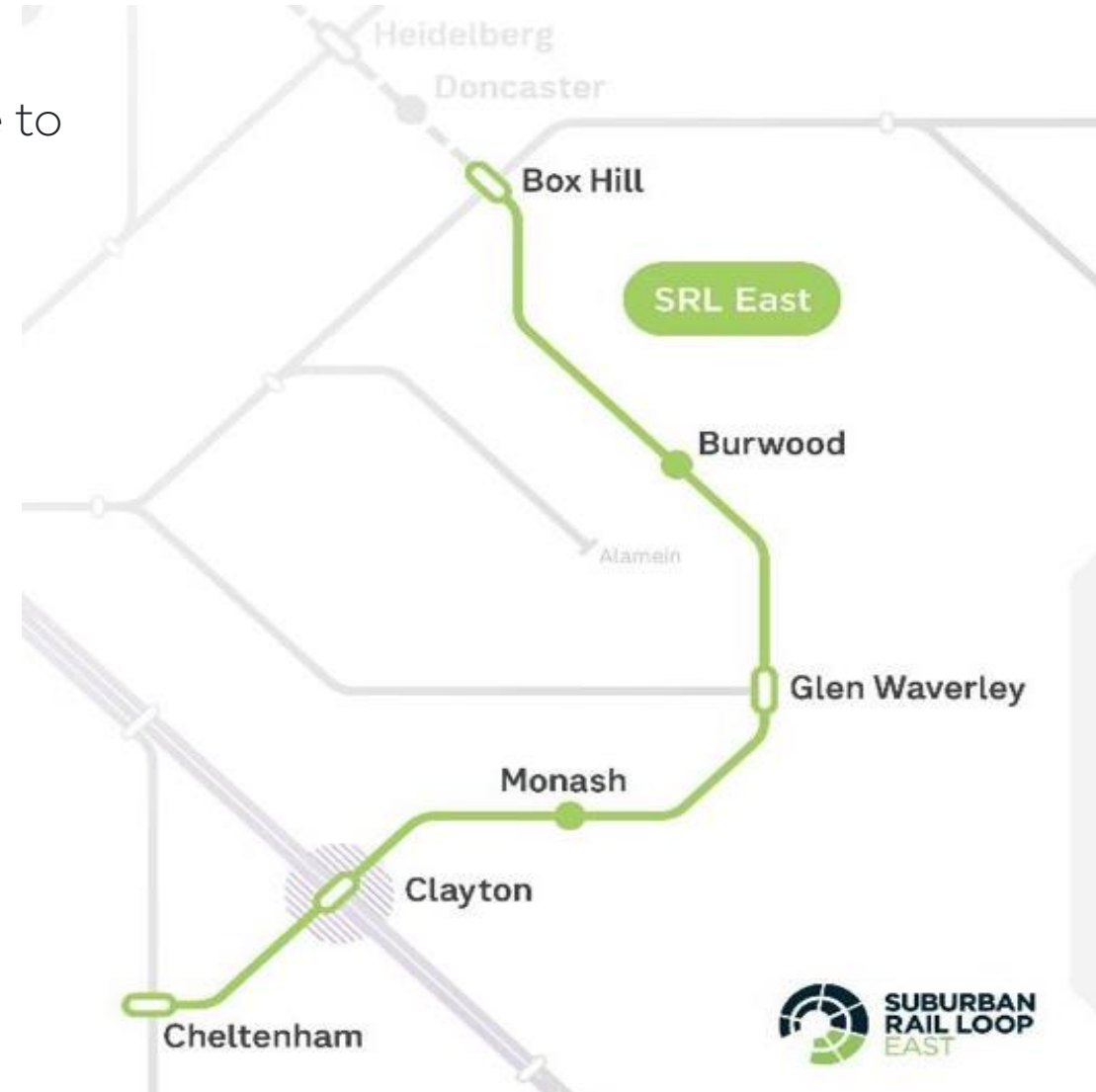
600,000 car trips
off the road with
SRL East and North



70,000 daily trips
improving
connections



70,000 new homes
and housing
choice



SRL East – Precincts

Coordinated and thoughtful planning in the SRL East neighbourhoods will:

- Connect communities through world-class public transport
- Support the economy by increasing jobs and access to business and retail precincts
- Enhance place through high-quality built form and open space
- Empower sustainability by enabling low carbon precincts.

Extensive engagement has been and continues to be undertaken with residents, businesses, councils and other stakeholders.



Regional benefits

Faster travel times and better access to key destinations and jobs across Melbourne – without going into the city

Three transport super hubs linking SRL East at Clayton, Broadmeadows and Sunshine

Airport link making regional centres and towns more attractive for investors and visitors

Regional passengers will increase by 20% on the Hume corridor and 10% on the Gippsland corridor

