

Housing and Building

Nick Staikos MP

20 MAY 2026

The logo for the Victoria State Government, featuring a black downward-pointing triangle with the word "VICTORIA" in white, bold, uppercase letters. Below "VICTORIA" are the words "State" and "Government" in a smaller, black, sans-serif font, stacked vertically. The logo is positioned at the tip of a large, grey, downward-pointing arrow that originates from the top right corner of the page. The arrow's shaft is a solid grey, while its tip is a black triangle. The arrow is set against a background of a colorful, abstract pattern of wavy lines in shades of orange, red, yellow, green, and blue, which is part of the Victoria State Government's branding.

VICTORIA
State
Government

PORTFOLIO OVERVIEW



Expand Victoria's housing supply



Deliver safe affordable homes



Oversee social and affordable housing



Strengthen consumer confidence in Victoria's building industry



Build and improve social homes



Enable Aboriginal self-determination and more homes



Address homelessness and ensure access to housing when needed

BUILDING POLICY AND REFORM

The Victorian Budget 2026/27 delivers improvements to building regulation and safety.

This includes:

- \$80 million over four years to protect consumers and reinforce confidence in the industry through continued policy oversight and delivery of legislative functions
- \$16 million for trades registration and licensing implementation, including for carpentry, welding, waterproofing, and complex plumbing.



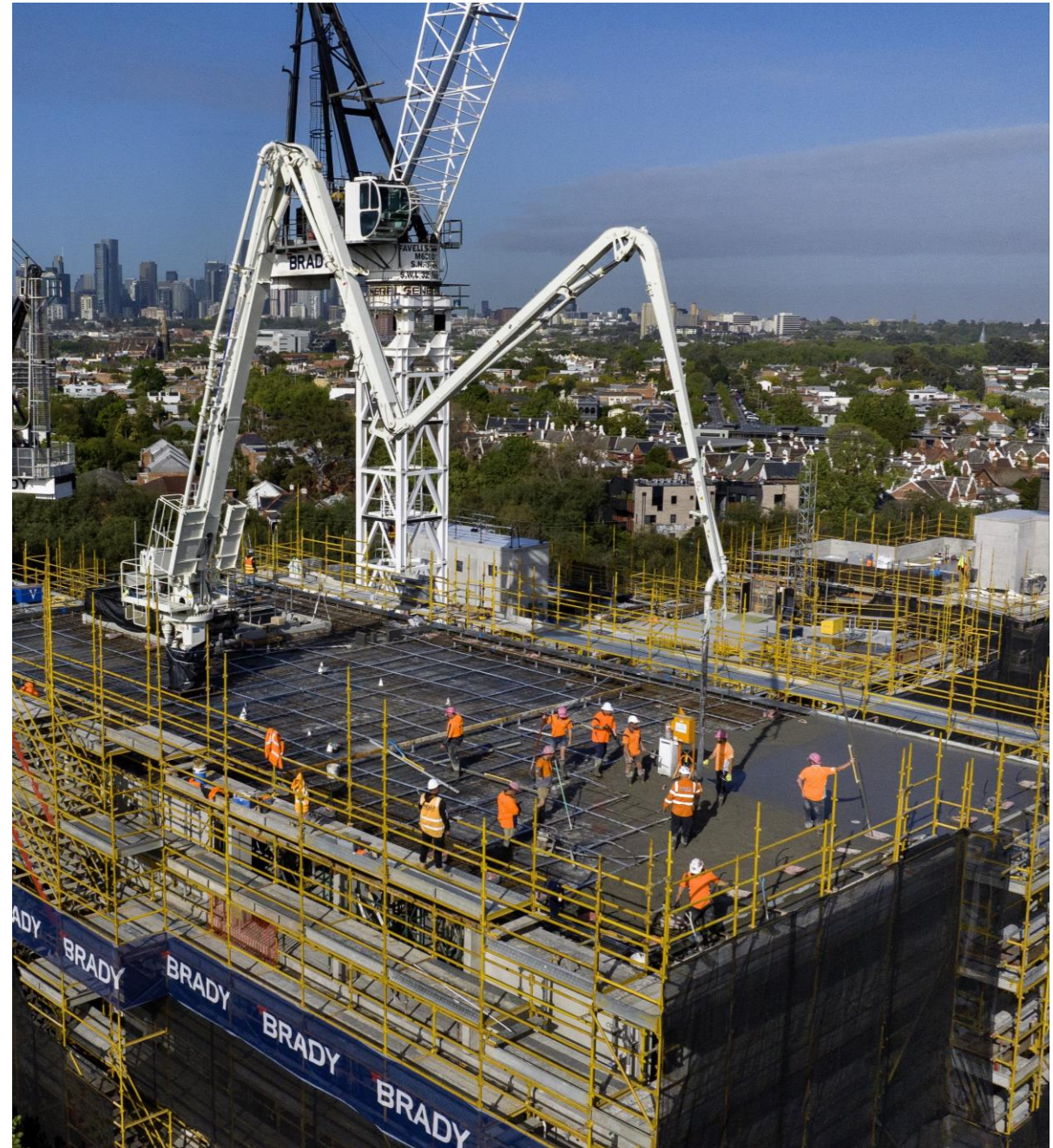
INVESTING IN HOUSING & SUPPORT

The Victorian Budget 2026/27 invests in improving access to more and better homes.

It includes:

- continued delivery of building reforms
- \$860 million for 7000 more homes over 10yrs and continued progress of the high-rise redevelopment
- \$41 million to address homelessness through proven interventions
- \$6.1 million to support renters to establish, strengthen, or maintain their tenancies.

This year's budget brings new investment in social housing and homelessness since 2015 to over \$10 billion.



THRIVING RESIDENTS & COMMUNITIES



Renters' wellbeing is our priority



Renter voice & involvement remains central in program delivery and achieving positive outcomes



\$2m to foster thriving communities at North Richmond



\$6.1m to support renters to maintain their tenancies



Working with community leaders in Flemington and North Melbourne



Speaking with residents at the Flemington Help Hub



Visioning engagement in South Yarra



Resident engagement in Richmond


REDEVELOPING OLDER HIGH RISE



5 towers in relocations



An early look inside new homes at Simmons Street, South Yarra



North Melbourne
800 new homes
↑ **110%** in social housing



Flemington
700+ new homes
↑ **11%** in social housing



Carlton
248 new public housing homes
↑ **26%** in social housing



South Melbourne
131 new social homes

Delivering stronger consumer protections and a stronger building industry watchdog



Single regulator for building system



Builders must fix defects



Faster access to insurance



Bonds for large apartments (4+ storeys)



Early intervention via improvement & infringement notices



Stronger tools to enforce compliance



Consistent disciplinary scheme and stronger suspension powers



Hold industry accountable with new civil penalties and expanded director liability

MORE FUNDING TO ADDRESS HOMELESSNESS AND SUPPORT TENANCIES

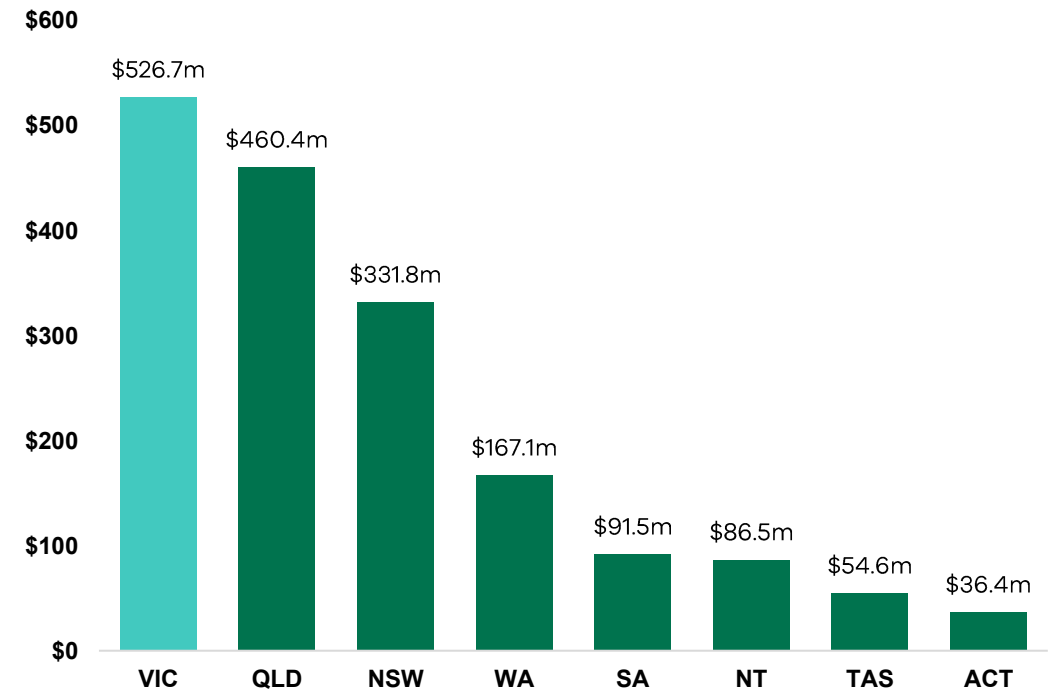
\$26 million more to address homelessness through emergency accommodation and the expansion of assertive outreach services.

\$15.1 million to provide rough sleepers with supportive housing using a Housing First model

Victoria continues to invest the most of any state and territory in homelessness services, including:

- o \$445 million since 2021-22 in Housing First to support over 3,500 households
- o Supportive housing facilities will grow to over 360 beds in 2025-26, an increase of 300 places in six years
- o Over \$80 million will continue to be invested in 2026-27 to intervene early and address youth homelessness
- o Young people aged 15 to 24 years presenting alone for help has decreased 34% since 2012-13
- o 130 new beds for young people will continue to be delivered in 2025-26.

**Government output spending on homelessness services
2024-25**

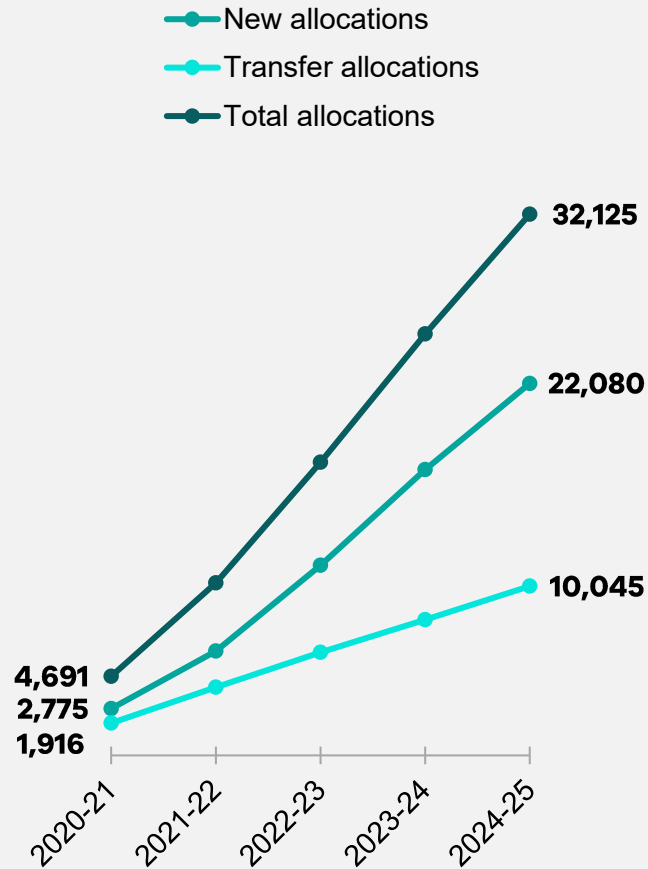


<https://www.pc.gov.au/ongoing/report-on-government-services/2025/data-downloads>
From section G: Housing and Homelessness, in the Homelessness Table 19, Tab 19A.1

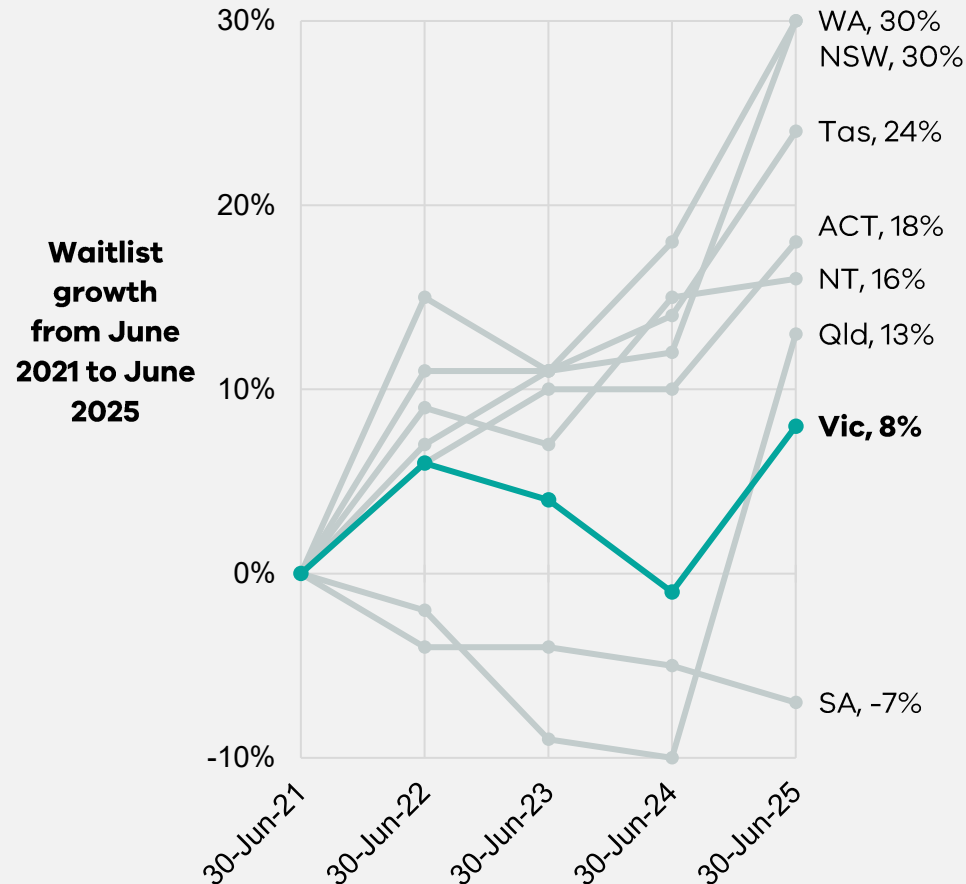
Note - graph includes some family violence funding

SOCIAL HOUSING ALLOCATIONS ARE STRONG

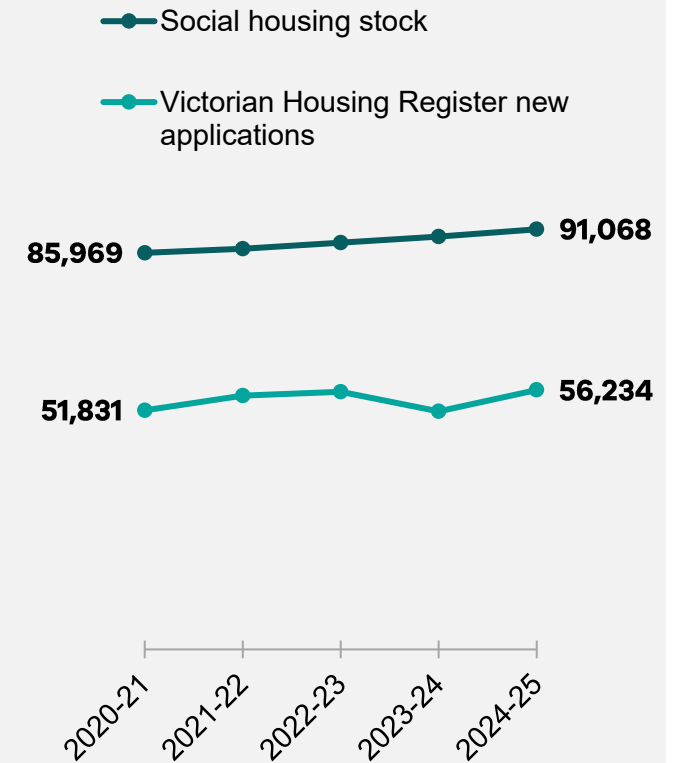
Cumulative allocations into social housing since 2019-20



Higher allocations driven by more supply have helped contain growth in the social housing waiting list



While social housing stock has grown, demand on the Victorian Housing Register continues to grow

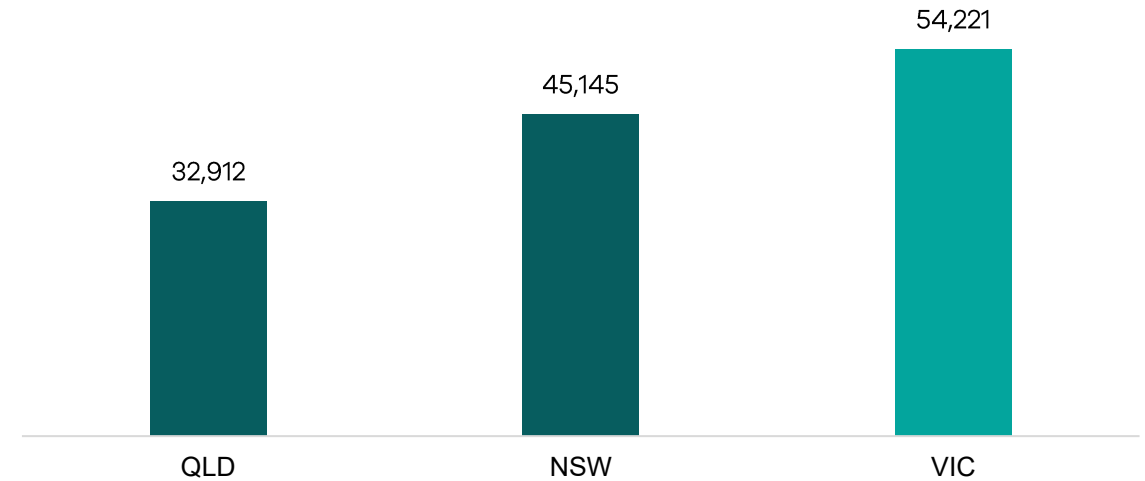


VICTORIA BUILDS MORE HOMES AND MORE SOCIAL HOMES

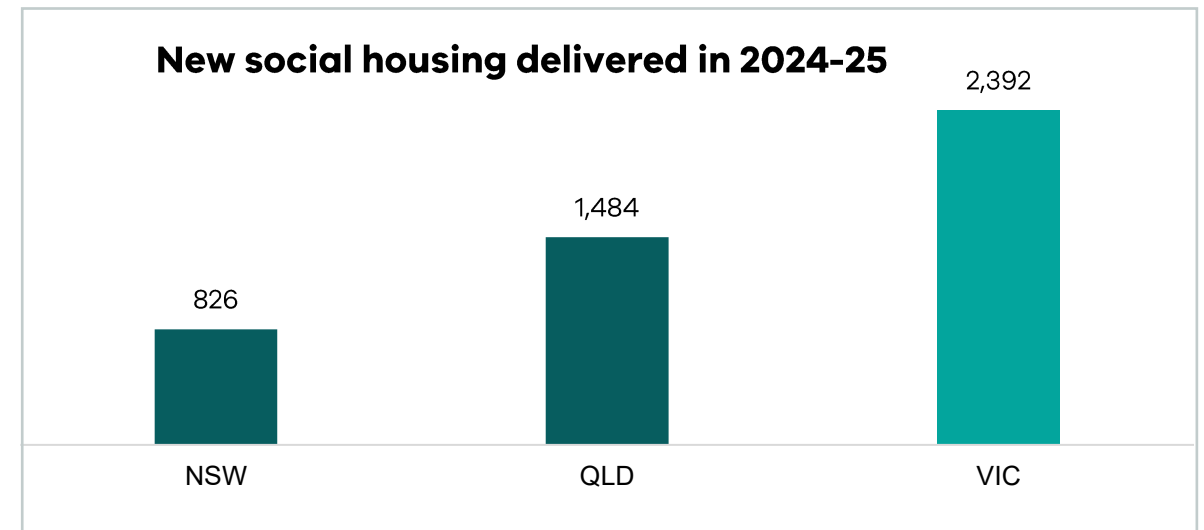
Victoria:

- Completed 54,221 new residential dwellings in 2025 – the highest in the nation
- Delivered the most social homes in 2024-25
- Had the most residential approvals in 2025
- Continued progress to its more ambitious target of 800,000 homes over ten years.

New residential dwelling completed in 2025



New social housing delivered in 2024-25



KEY ACHIEVEMENTS

- The \$6.3 billion Big Housing Build and Regional Housing Fund is delivering more than 13,300 homes, with an additional 2,600 homes delivered through Homes Victoria's broader capital program.
- Across the Big Housing Build and Regional Housing Fund more than **12,300** homes have commenced.
- Over **2,000** social homes are projected for completion in 2025-26, including under the Social Housing Growth Fund, such as:
 - ✓ Myers Street, Geelong (117 homes)
 - ✓ Wightman St, Footscray (92 homes)
 - ✓ Walnut Avenue, Mildura (22 homes)
 - ✓ Edgar Street, Portland (17 homes)
 - ✓ Bell Street, Preston (14 homes)
 - ✓ Silvereye Street, Torquay (12 homes)
- And in 2026-27 we're on track to deliver even more homes in metro and regional Victoria.

