

2017-18 Budget Estimates Hearing Water Portfolio



1 June 2017

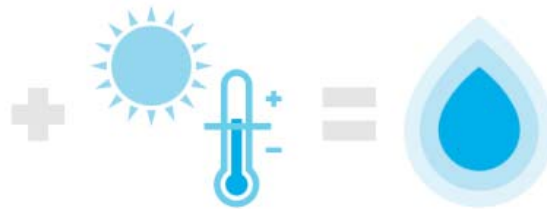


Environment,
Land, Water
and Planning



Population growth

Victoria's population is projected to reach 10.1 million by mid-century. That's a lot of extra people who all need access to water.



Climate change

Climate change will mean Victoria becomes drier over the long-term, with more extreme events including droughts, floods and heatwaves.



Less water

By 2065 streamflows to some of our catchments could reduce by around 50 per cent per year. This means less available water in our storages.



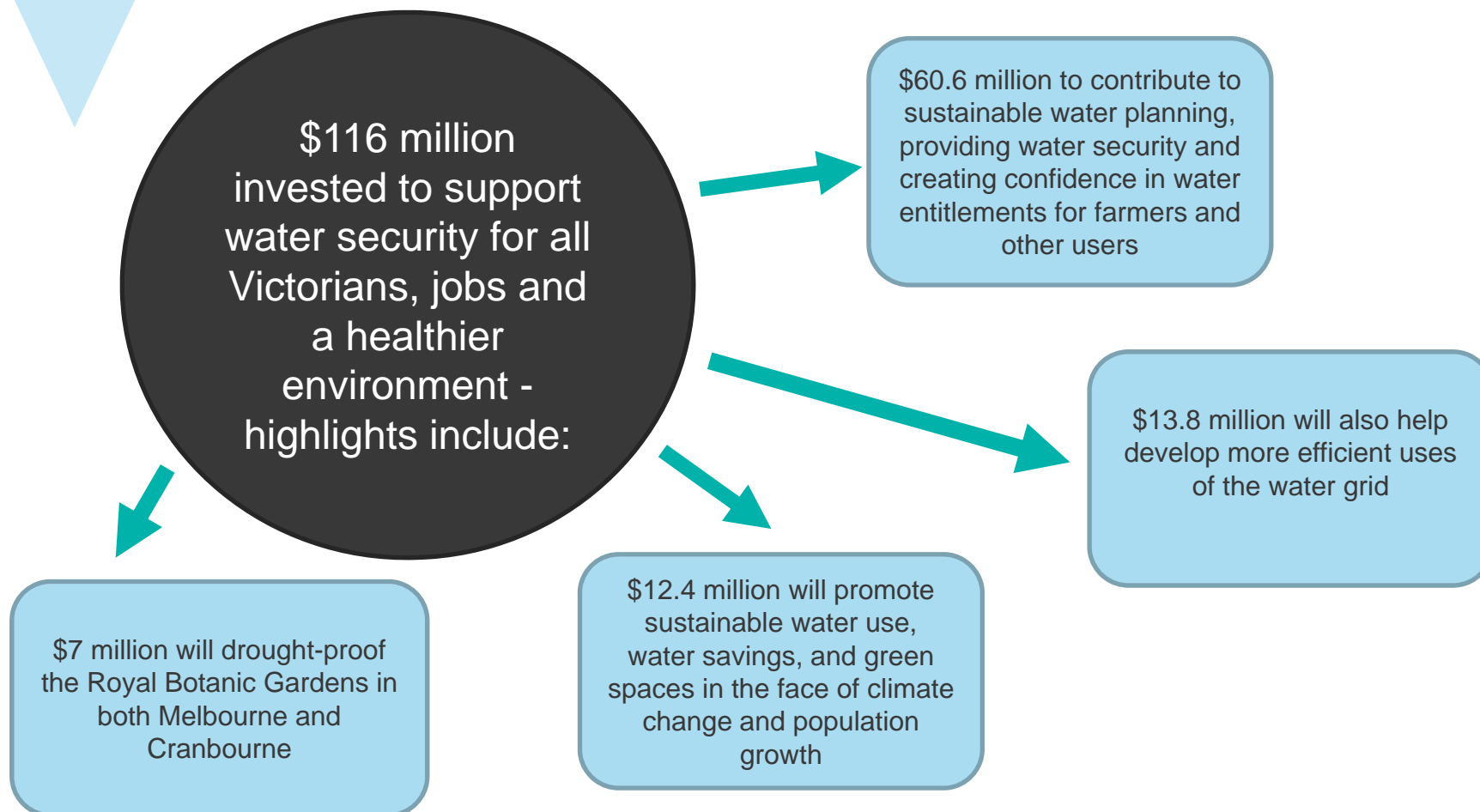
So we're taking action now

Planning for a future with less water and preparing Victoria for the decades to come.

Key actions

- Tackling climate change
- Improving the health of our waterways and catchments
- Maximising the value of agricultural production
- Water for liveable and resilient cities and towns
- Recognising recreational values of water
- Water for Aboriginal values and economic development
- Strong water entitlements and planning
- Making the best use of the water grid and markets
- An innovative water sector for a growing economy

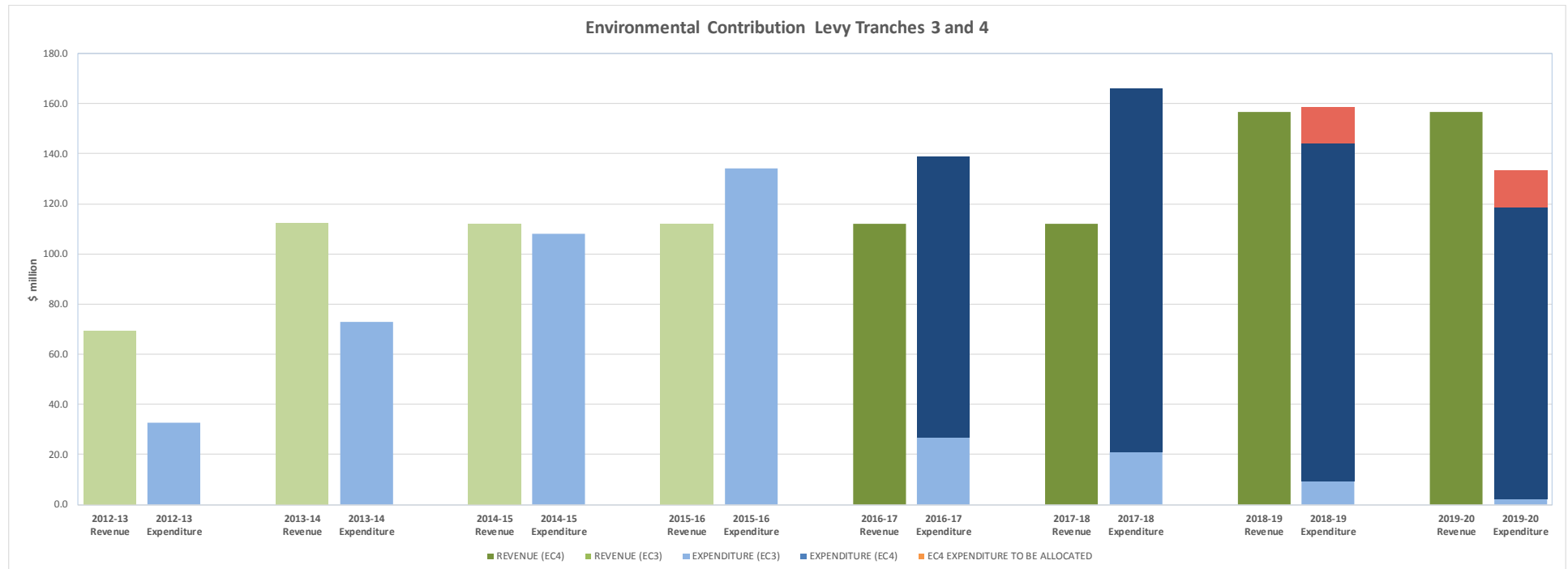
2017-18 Budget highlights



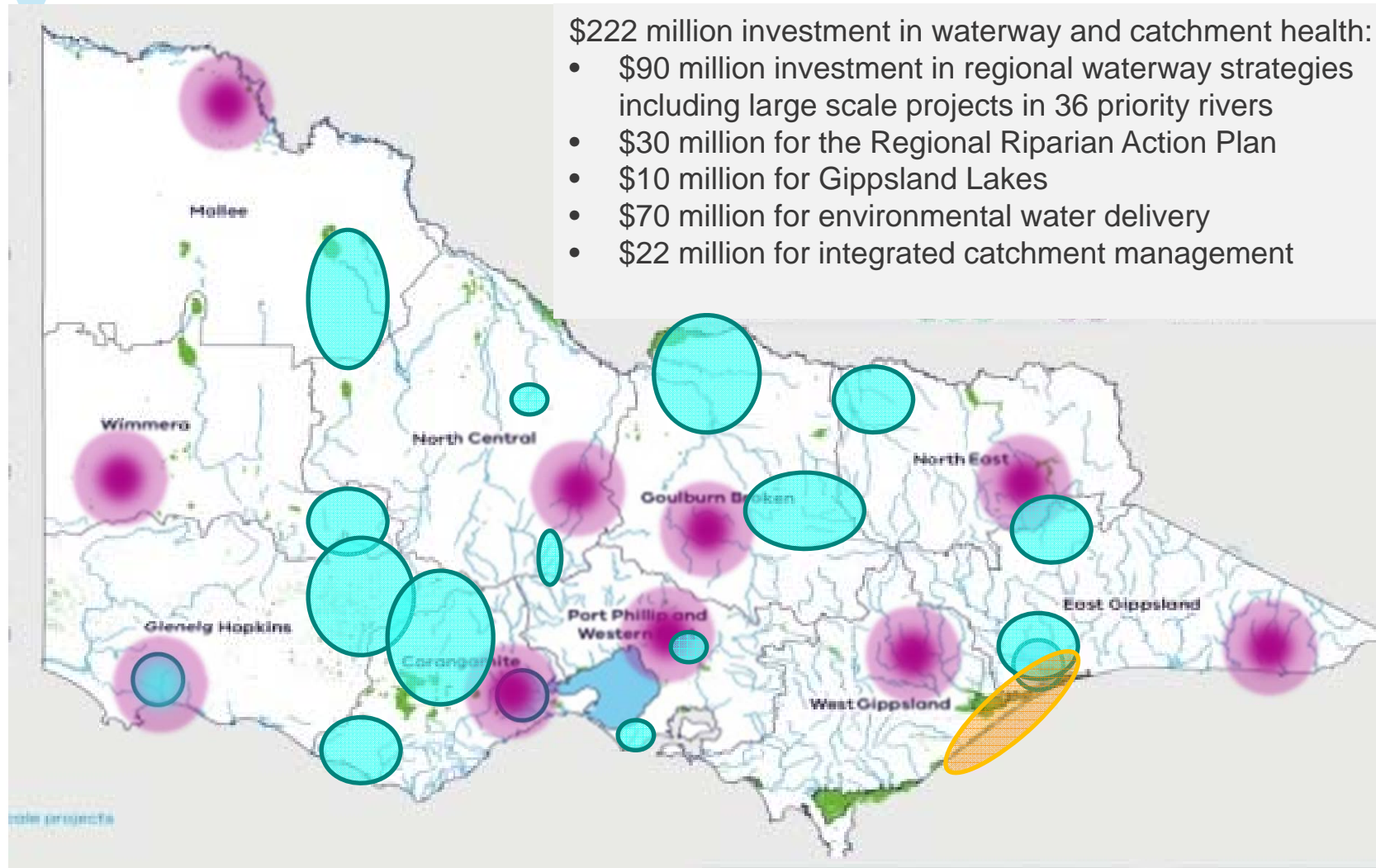
Builds on the \$468 million investment in the 2016-17 Budget – brings the Labor Government's total investment so far to deliver *Water for Victoria* to \$584 million

Environmental Contributions

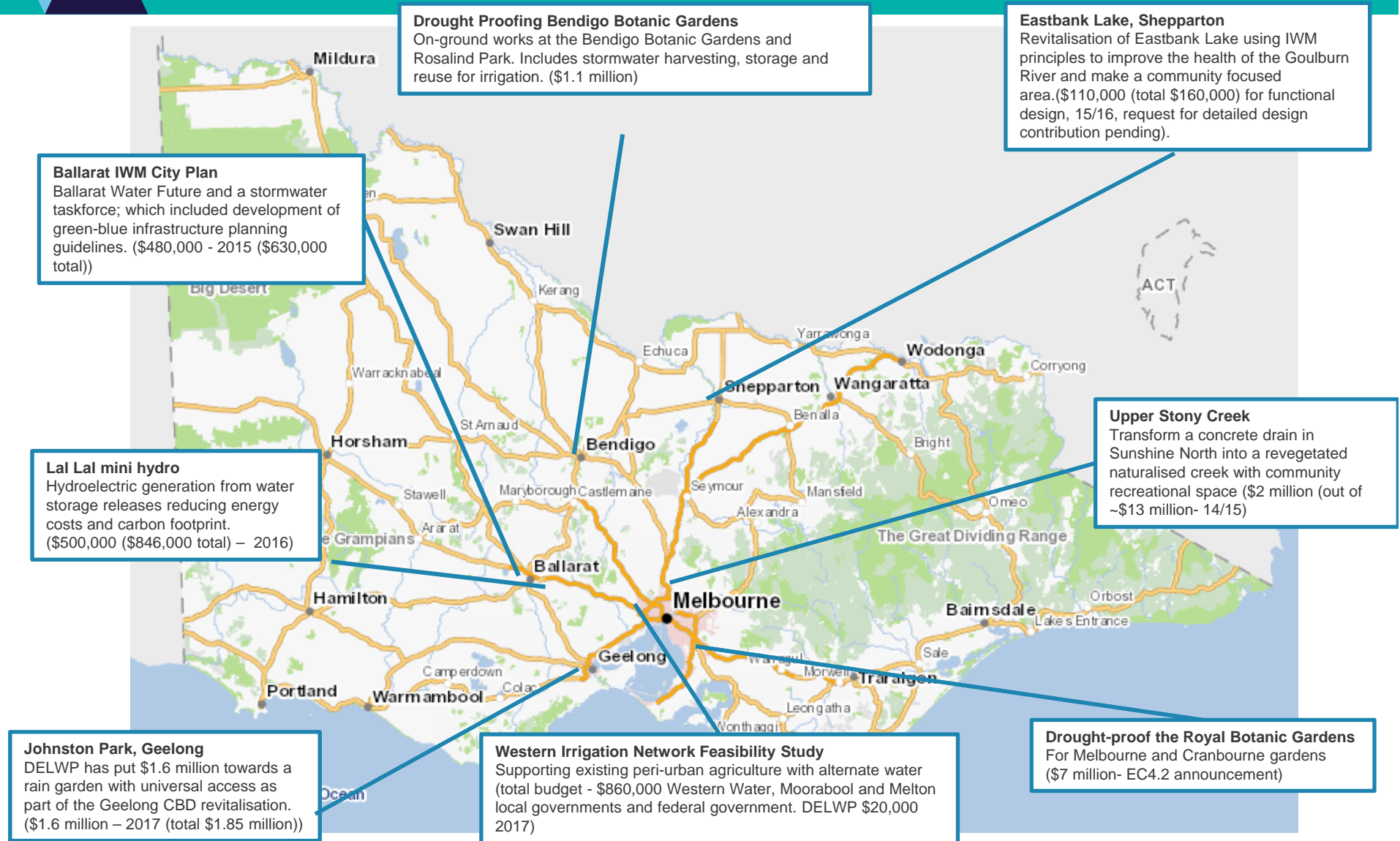
- Restored good governance and responsible management to the water sector
- The 2017-18 State Budget allocates an additional **\$114 million** of EC expenditure to new projects
- EC4 was established in 2016-17 with revenue of **\$537 million** over four years to be invested
- **\$509 million** has now been allocated with \$29 million remaining to be allocated in future budgets



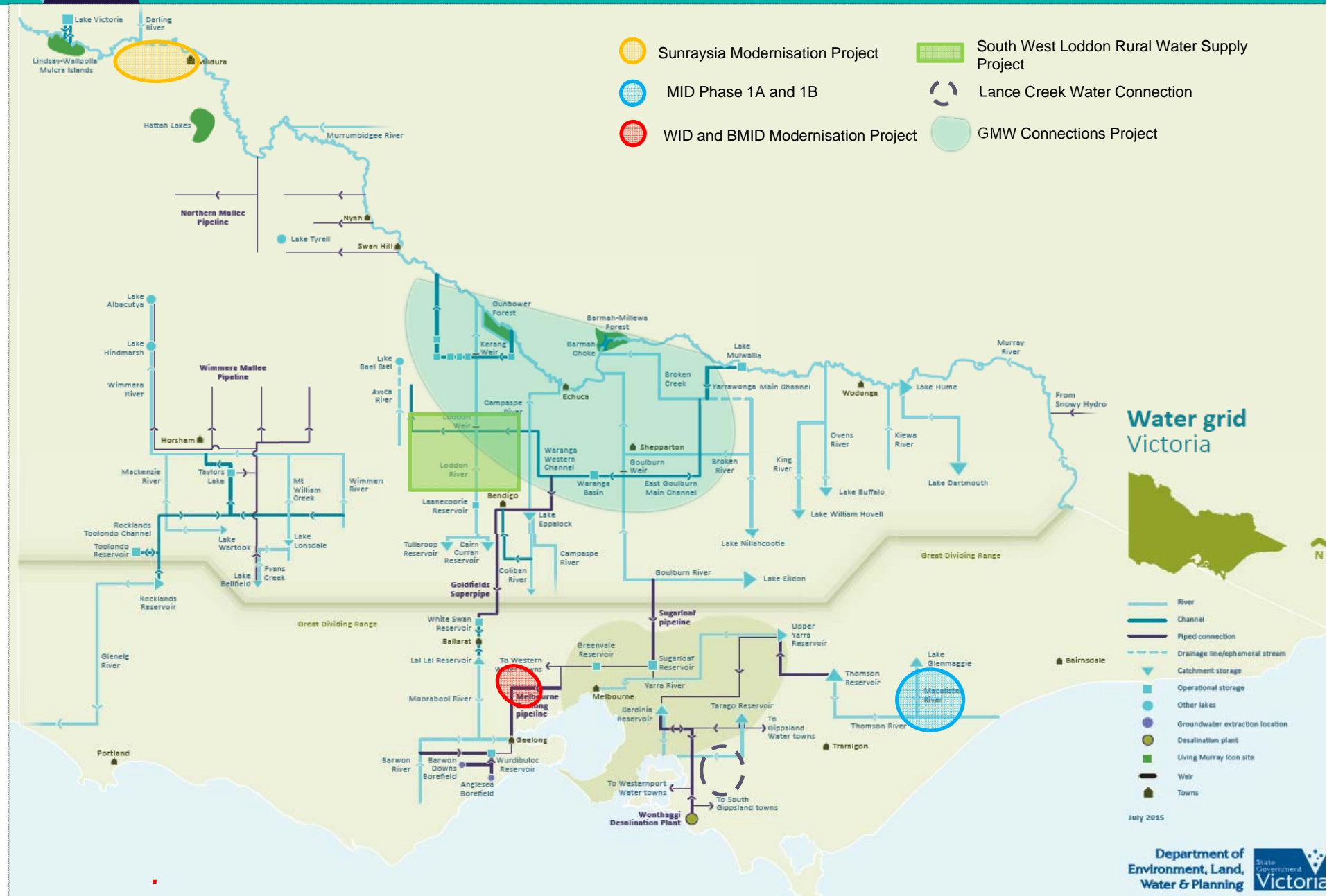
Delivering for our waterways and catchments



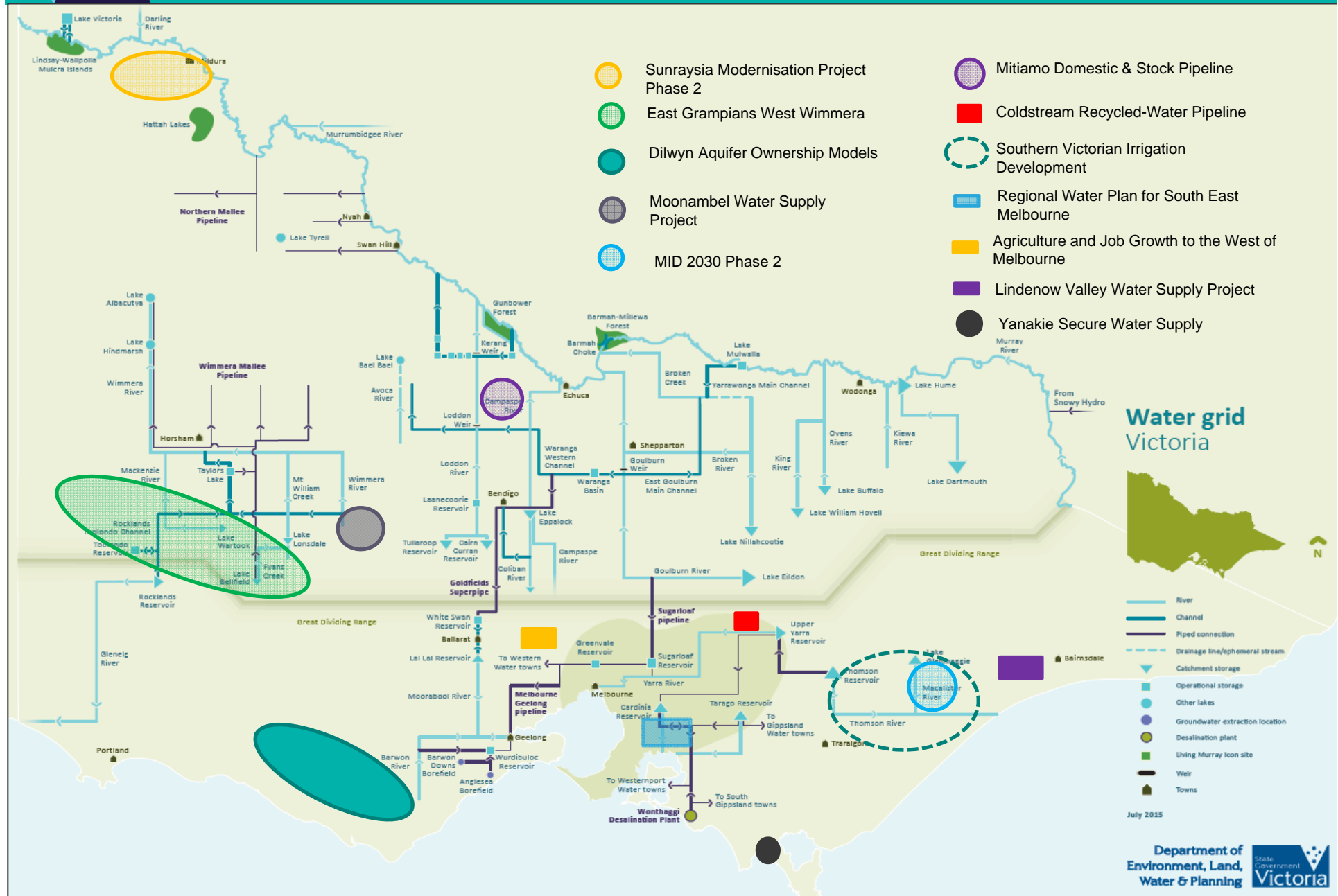
Integrated water management projects



Victoria's water grid: capital investment underway



Feasibility studies underway



- **Water storages**
 - 63.1%
- **2016-17 water order**
 - 50 GL
- **2017-18 water order**
 - 15 GL
 - No additional cost to water customers



Desalination and Melbourne's water storages

- Desalination water deliveries increased Melbourne's storage levels by 1.8% of their total capacity
- The additional water has slowed the rate of storage decline.
- Storages are nearly 6.0% lower than at the same time in 2015, or more than 100 GL

