



Natimuk Fire – 9 January 2026

David Sudholz
Captain, Natimuk CFA

OUR COMMUNITY • OUR CFA

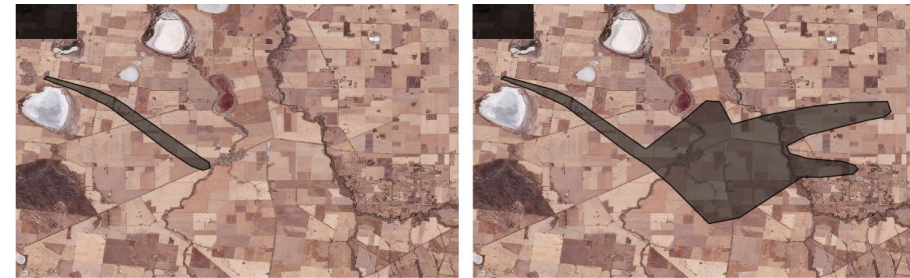


cfa.vic.gov.au

Timeline

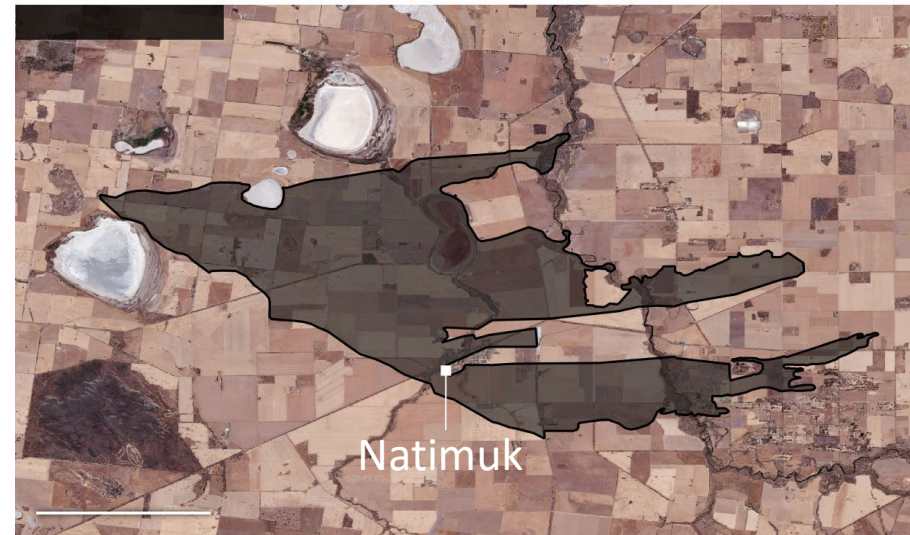
- 12:43 – Pager activation
- 13:39 – Aged care alarms
- < 1 hour to impact

Extremely rapid escalation



NW ↘

SW ↗



OUR COMMUNITY • OUR CFA



What Worked

- **Community & farmer response** (decisive)
- Local decision-making
- Local knowledge



OUR COMMUNITY • OUR CFA



Limitations



Training & SOP familiarity



Communications issues



Loss of water supply



Command continuity



Preparedness Reality

Assumed standard
response sufficient

Volunteer training
constraints

Variable
community
preparedness

“Catastrophic days exceed standard assumptions”

OUR COMMUNITY • OUR CFA



Recommendations

1. Flexible volunteer **training**
2. **Infrastructure** resilience
3. **Recognise** private firefighting



OUR COMMUNITY • OUR CFA

