



Mine Rehabilitation Introductory remarks

ICHYPS

16 March 2022

Rae Mackay

Chair, MLRA



Transition to the next land use

- Operators: financing, planning and construction
- Government: policy, approvals and regulation
- Community: expectations and vision

- MLRA's role during rehabilitation is to monitor/facilitate:
 - Planning and implementation
 - Engagement and assurance
- MLRA's role post-rehabilitation is to:
 - Monitor and manage rehabilitated land



Community Preferences 2019

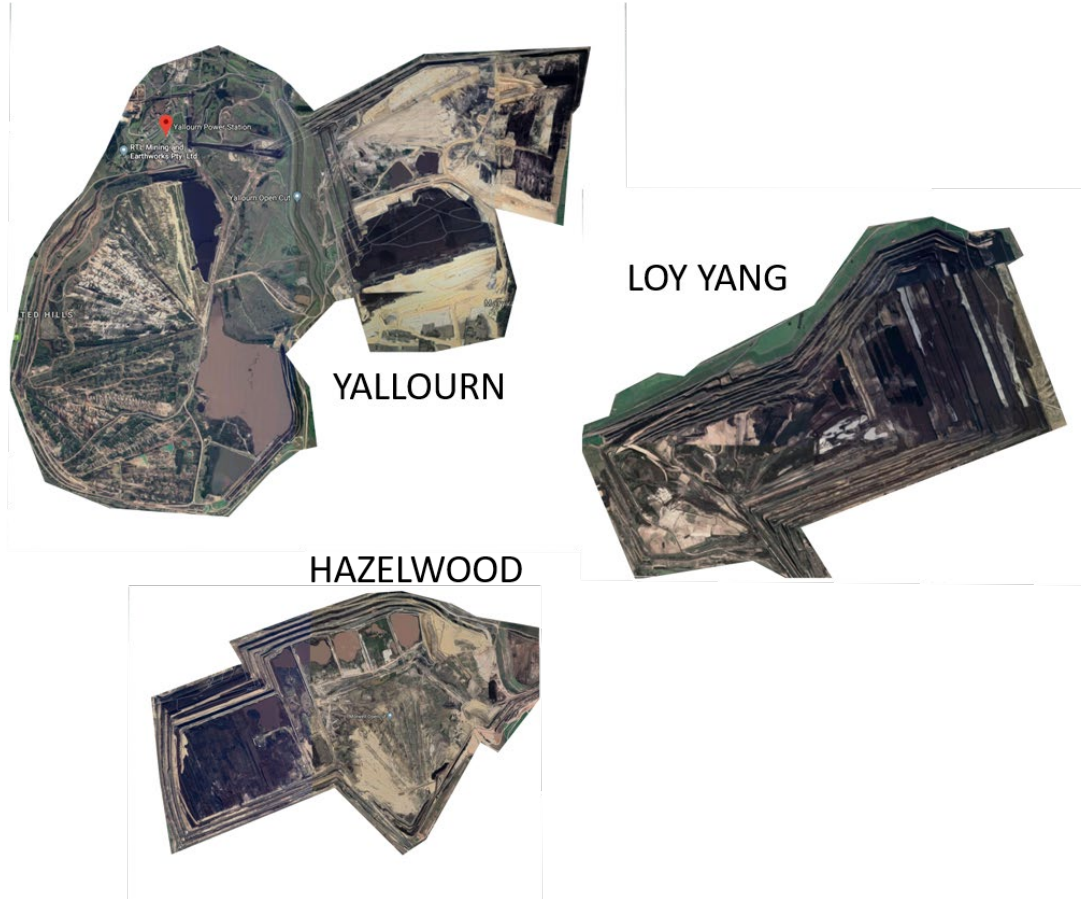


Rehabilitated land should

- be attractive and productive as well as safe, stable and sustainable
- not adversely impact the region, in particular, downstream water bodies and water users
- be publicly accessible
- not prevent future coal development
- be available quickly
- celebrate the region's history

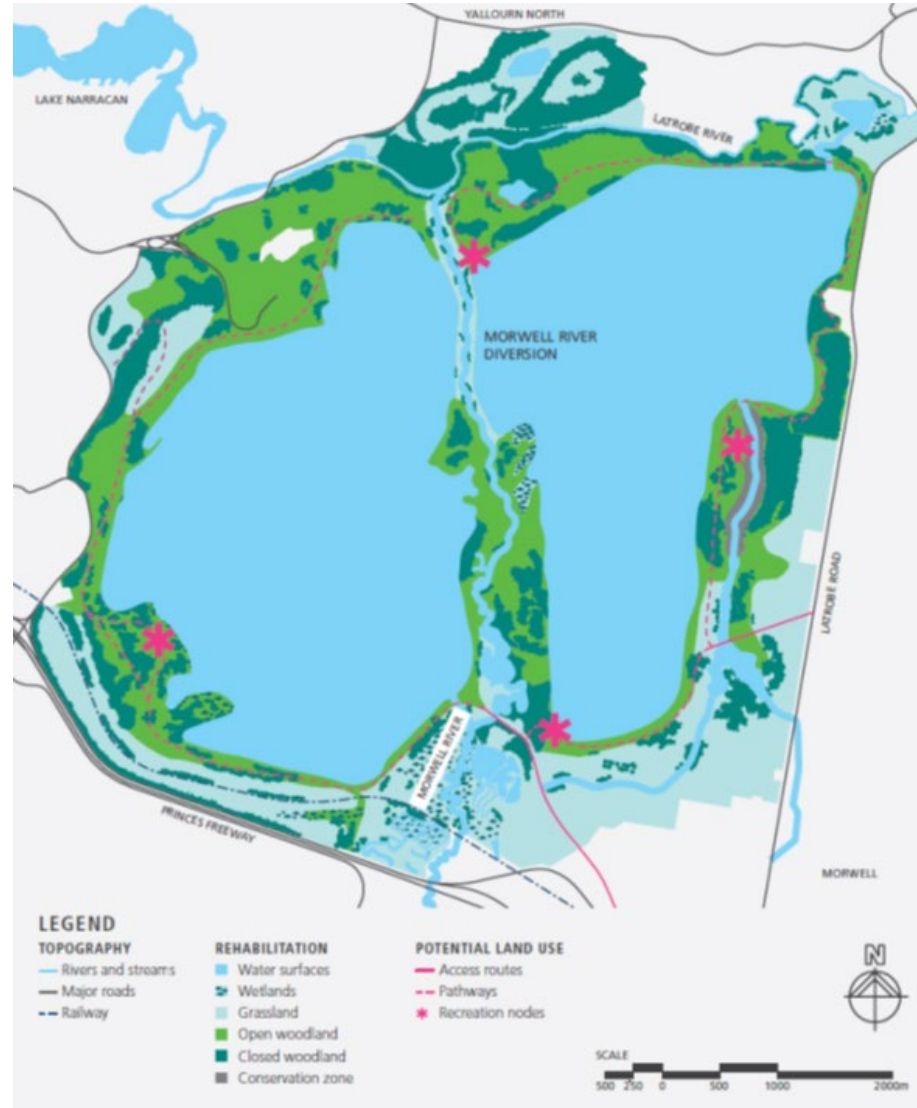


Latrobe Valley mines

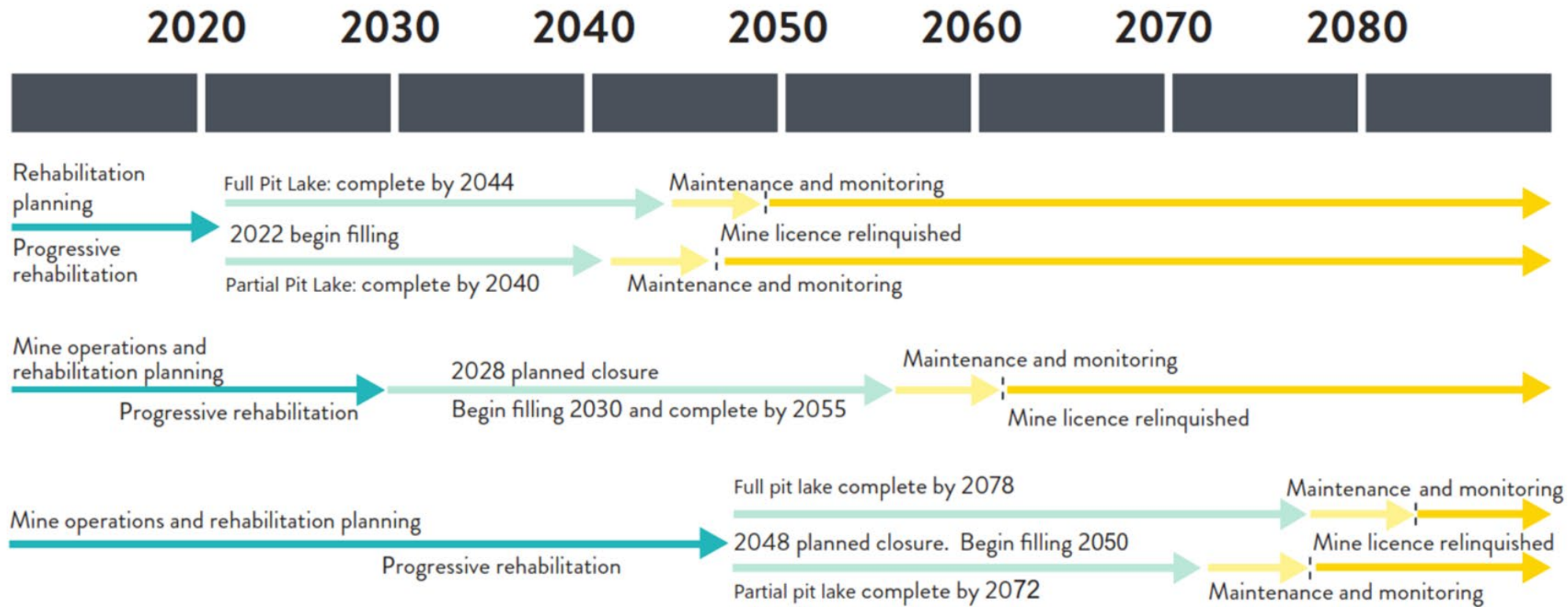


- 3 mines
 - > 40 km² total mine area
 - > 135 km² total licence area
 - > 90, 130 and 200m deep
- Ground control essential
- Fire management essential
- Environmental hazards management essential

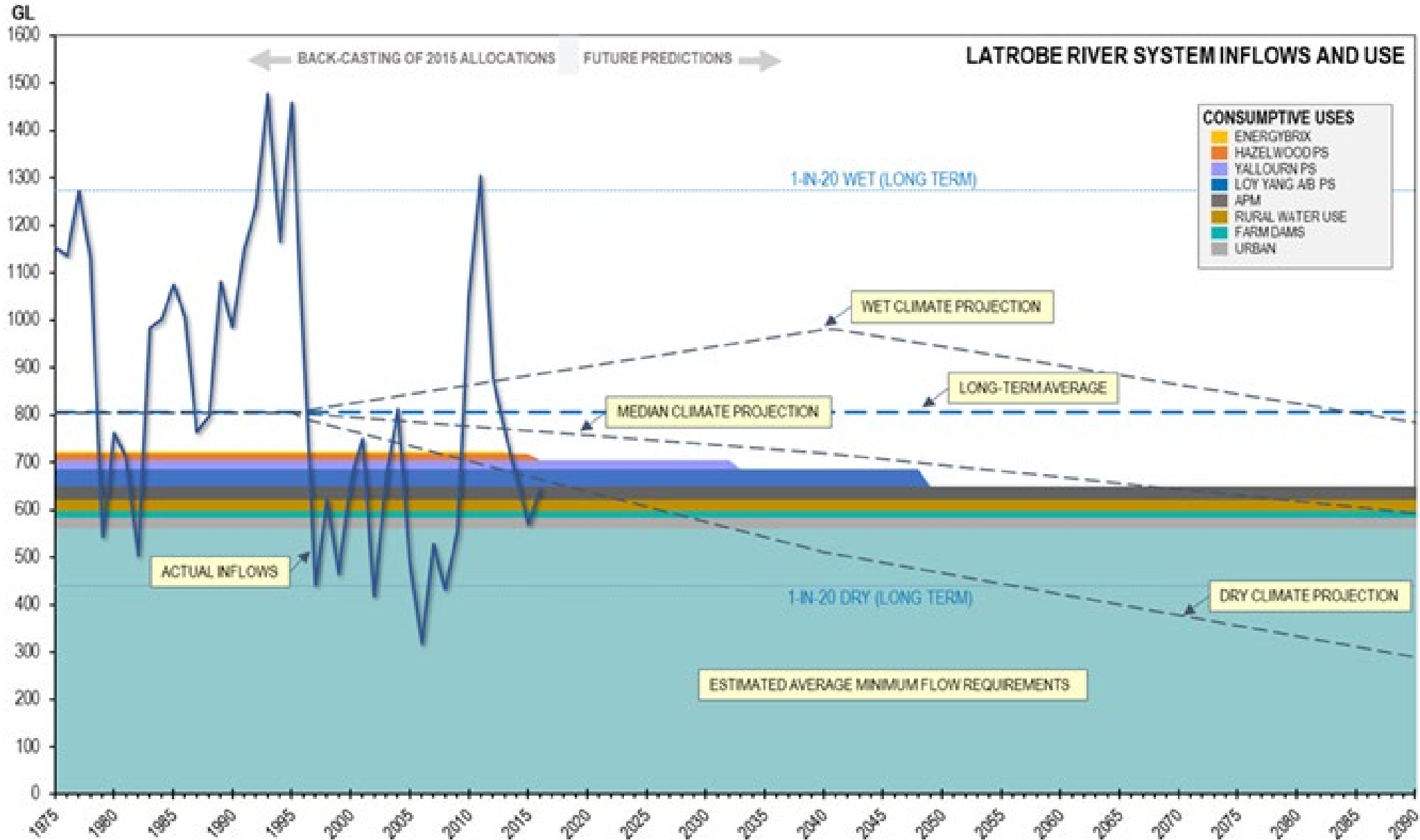
Operator preferred final landforms



Indicative timeline



Latrobe Water Security



Rehabilitation Planning Context



Yallourn North Extension Open Cut

- Recent history of damaging ground movements and fires
- Mine rehabilitation using lake forms solves these issues
- Local water resources are at significant risk from climate change impacts
- Strong advocacy for alternative water uses, not local water for rehabilitation
- Wide ranging options assessments still underway
- New regulations are in the pipeline
- Uncertainty of outcomes and future risks remain

In summary



- Uncertainties in the energy market and the future of coal are creating a dynamic workspace for transition
- There are significant environmental and socio-economic complexities involved in transitioning mine land in the Latrobe Valley
- The current focus is on landform and not land use, though this will change
- The timeline for rehabilitation is likely to be long – very long!
- Building a shared community vision for the future is essential but not easy!

BUT

- If we get the transition right, the long-term value for the region and the State will be substantial.