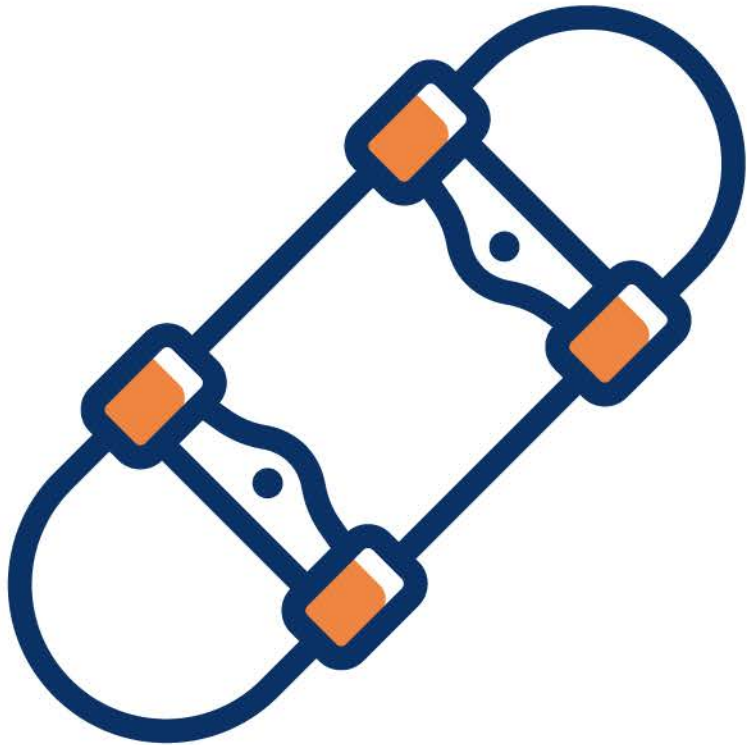




## The rubbish problem

At your school, you've noticed that the bins are always overflowing by the end of lunch. Rubbish blows across the playground and some students are starting to complain. There has been an increase in ravens and other birds feeding on the rubbish. Everyone complains but nothing seems to change.

*How could you lead a change to make the school cleaner and encourage everyone to care about the environment?*



## The skate park decision

Your local council is building a new skate park. They've asked adults for their views but haven't asked young people what they think. You and your friends have ideas about design, safety and what makes a skate park fun.

*How could you make sure young people's voices are heard in the decision-making process?*



## Inclusion in sports

A student at your school wants to join the soccer team but is worried because they've never played before. Some teammates don't want them to join because they think it will make the team weaker.

*How could you step up as a leader to make your team fair, welcoming, and supportive?*



## School fundraiser ideas

Your school is holding a fundraiser, but the same few students always choose the activity (like sausage sizzles or casual dress days). Many students feel their ideas aren't listened to.

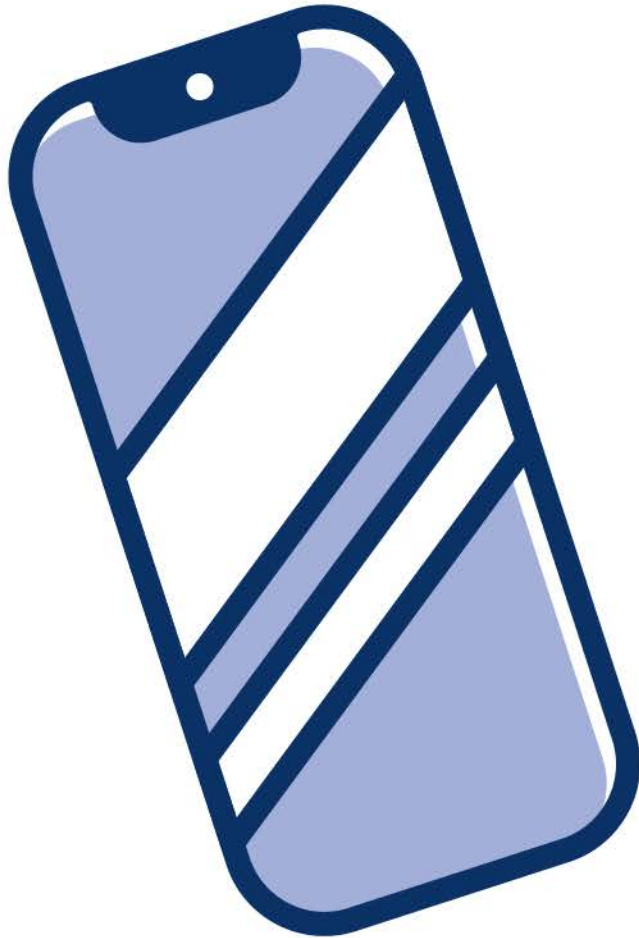
*How could you create a process that gives everyone a fair chance to be heard?*



## The new student

A new student arrives at your school from another country. They are shy, don't speak much English, and often sit alone at lunch. You're worried that some students don't know how to make them feel included.

*What could you do to make sure the new student feels included and respected at school?*



## Technology rules

Your school is updating its rules about mobile phones and technology. The school is divided. Some feel that teachers should make decisions without asking students, others feel that without student input the rules will be too strict.

*How could you raise student voices respectfully and suggest fair rules that balance learning with student needs?*