



Gippsland Lakes Ramsar Site

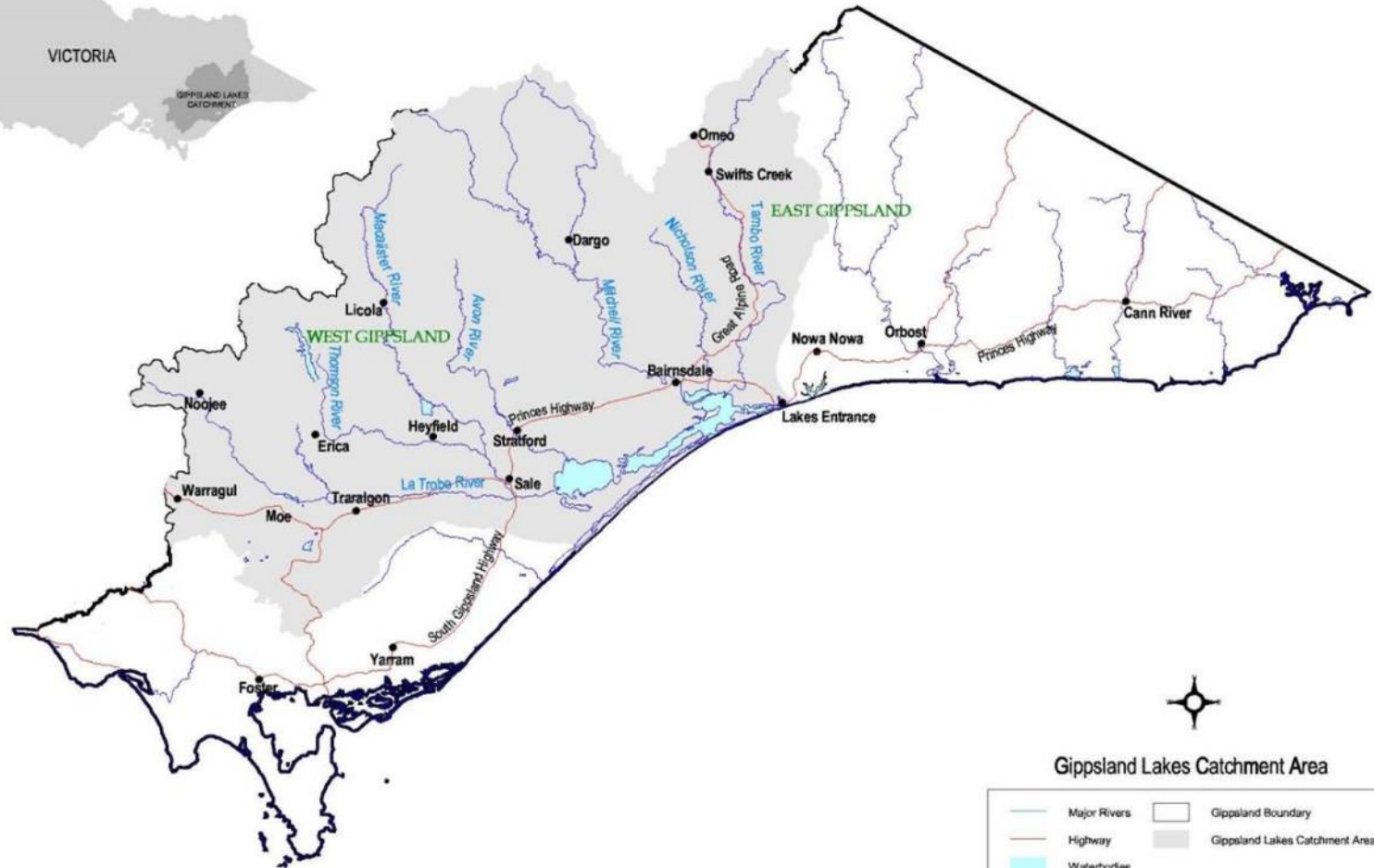
Coordination and Management
Actions



Gippsland Lakes Ramsar Site

- Approx. 300km east of Melbourne
- 60,000ha in size
- Series of coastal lagoons (35,000ha) and fringing wetlands formed behind a barrier dune system
- Catchment area of approx. 2,000,000ha
- 7 major river systems
- Significant to the Gunaikurnai people with extensive areas of Joint Managed Land
- 2 CMA regions, multiple LGA's, public land primarily managed by PV and DELWP

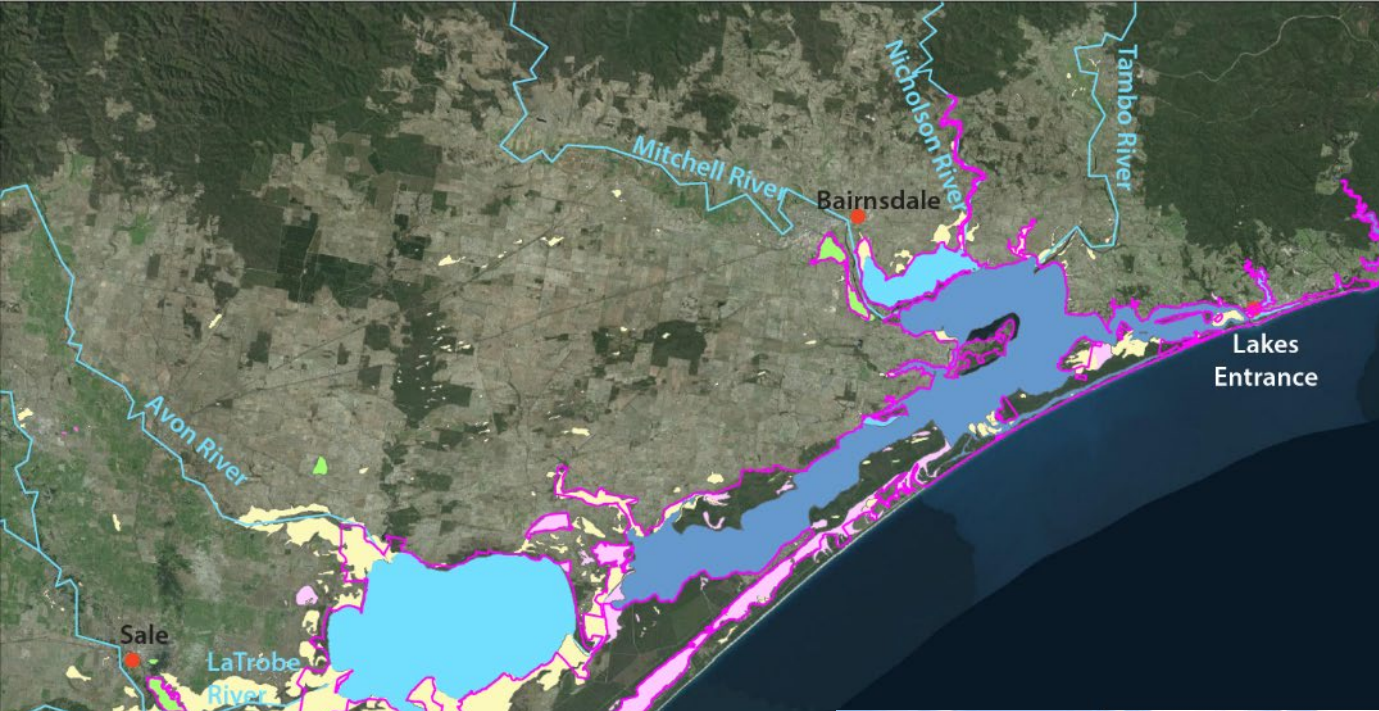




Gippsland Lakes Catchment Area

	Major Rivers		Gippsland Boundary
	Highway		Gippsland Lakes Catchment Area
	Waterbodies		





Ramsar Listing Criteria



Influences and Threats



Our Role

- The East Gippsland CMA is the designated Ramsar Site Coordinator for the Gippsland Lakes Ramsar Site
- Convene the Ramsar Site Coordinating Committee
- Coordinate the implementation of the Site Management Plan and MERI Plan
- Develop an Annual Action Plan
- Report to the Statewide Coordinator

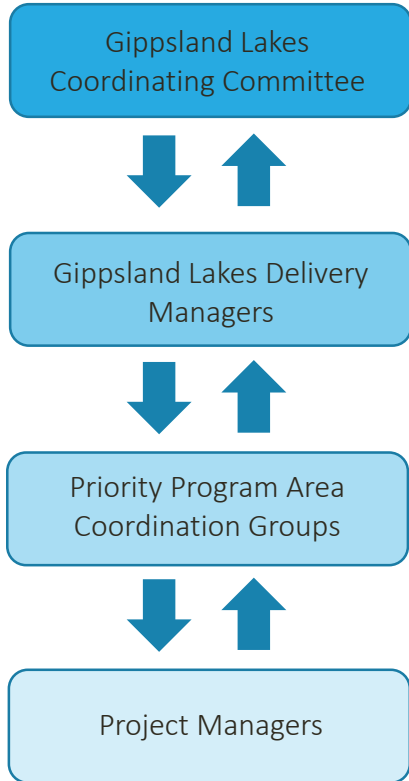


Our Response

- Site Management Plan finalised in 2016
- Delivery Managers Group in place since September 2015
- Ramsar Site Coordinating Committee in April 2018
- Participated in Statewide projects including development of MERI plan templates and Ramsar Management System (online reporting tool)
- MERI Plan endorsed in March 2019
- Annual Action Plan (19/20) in place



Governance



- Clear objectives
- Strategic direction
- Operational decision makers
- Lead coordination and collaboration
- Act as Ramsar Coordinating Committee
- Focussed on 4 priority program areas
- Identify opportunities at project level
- Convened by the Delivery Managers Group
- Implement projects on the ground
- Involve multiple partners
- Agency and community working together





Love Our Lakes



Gippsland Lakes Ramsar Site Management Plan

- Collaborative approach to development
- Clear roles and responsibilities (for the development of the plan and within the plan)
- Alignment of actions with obligations
- Involvement of community objectives
- Clear guidance for action



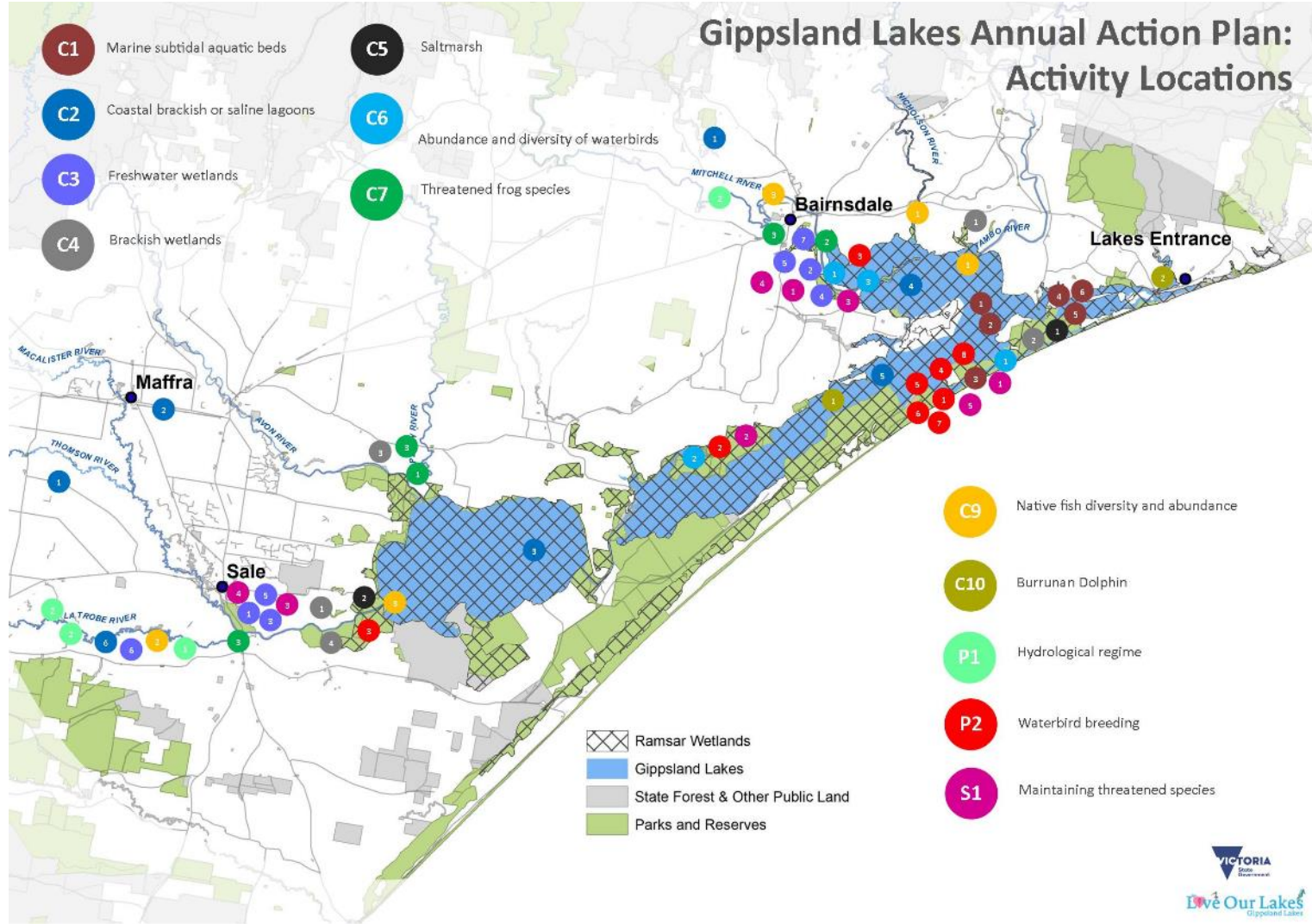
Gippsland Lakes Ramsar Site Management Plan 



Table 8: Management strategies and responsibilities for protecting fauna.

Management Strategies	Responsibility	Linkages to existing programs / activities	Relevant mega-habitat(s)
2A. Control of introduced predators in priority bird areas	Parks Victoria, DELWP	Biodiversity programs by Parks Victoria and DELWP	All
2B. Increase signs in priority migratory wader and nesting bird habitats to reduce disturbance	Parks Victoria, DELWP	Biodiversity programs by Parks Victoria and DELWP	Deep Lakes Shallow Lakes
2C. Identify key nursery areas for the Burrunan dolphins	DELWP	AMMCF (Australian Marine and Mammal Conservation Foundation)	Deep Lakes, Shallow Lakes, Estuarine reaches
2D. Investigate the risk posed by human disturbance to migratory waders develop and implement feasible actions to address the risks	Parks Victoria, DELWP		Shallow Lakes, Variably saline and hypersaline wetlands
2E. Develop and implement a public awareness campaign to reduce harassment and boating injuries to Burrunan dolphins	DELWP / Gippsland Ports	AMMCF	Deep Lakes, Shallow Lakes, Estuarine reaches
2F. Implement an introduced marine pest strategy for the Gippsland Lakes	DELWP	GLMAC: Introduced marine pest investigation	Deep Lakes, Shallow Lakes

Gippsland Lakes Annual Action Plan: Activity Locations





Improving the condition and connectivity of Lake Wellington and its wetlands

Partners GA, WGOMA, PV, TFN, DELWP, ARI, GLBWAC

Investment \$1.3 million

Activities

- 1 Managing environmental water to enhance the lower Latrobe Wetlands and estuarine reaches
- 2 Reducing the input of nutrients and sediment to Lake Wellington
- 3 Protecting and enhancing wetland habitats around Lake Wellington
- 4 Improving our understanding of Aboriginal Cultural Heritage around the Gippsland Lakes



Improving the wetlands of Jones Bay

Partners GA, PV, TFN, EGOMA, EGCO, GFCOM, EGRGMN, GLBWAC, Broffs, DELWP, Landcare

Investment \$1.4 million

Activities

- 1 Building constructed wetlands to reduce sediments and nutrient delivered to Jones Bay
- 2 Controlling taxes to protect important water bird populations
- 3 Protecting and enhancing fringing wetland habitats around Jones Bay
- 4 Protecting and maintaining the Mitchell River Ollie Jellies
- 5 Management to protect threatened species
- 6 Introduction of fish habitat in the lower Mitchell River



Protecting and enhancing alpine ecosystems

Partners PV, EGOMA, WGOMA, DELWP, NEDMA

Investment \$810,000

Activities

- 1 Managing the impacts of priority pest animals species through monitoring and control activities
- 2 Protecting critical alpine habitats through weed control and monitoring, revegetation, and management of access
- 3 Monitoring alpine pest animals to improve protection and management



Understanding and Improving Aquatic Habitats and Ecosystems

Partners DELWP, Federation University, ANMCF, RMT

Investment \$430,000

Activities

- 1 Improving our knowledge of potential mobility of metals within the Gippsland Lakes
- 2 Monitoring populations of the threatened Burmann Dolphin and their interactions with weasels
- 3 Increasing community awareness and participation in Burmann Dolphin management and monitoring
- 4 Monitoring for presence of invasive marine pests in the Gippsland Lakes



Improving the condition of the East Gippsland catchments

Partners DEDJTR, EGLN, EGOMA, GFCOM, EGRGMN, EPS, EGLN, TFN, DELWP, PV

Investment \$2.5 million

Activities

- 1 Working with landholders to improve management practice for production and environmental benefits
- 2 Improving riparian and woodland habitats through revegetation, weed control, and vegetation management
- 3 Fencing to exclude stock from along waterways
- 4 Controlling taxes to limit impacts on agricultural and environmental values
- 5 Controlling willows to improve the condition of waterways
- 6 Investigating barrier to fish migration and passage
- 7 Management to protect threatened species
- 8 Monitoring invasive pest plants to improve management



Protecting the Traditional Owner country of the Gippsland Lakes Outer Barrier

Partners PV, DELWP, GP, GLBWAC

Investment \$300,000

Activities

- 1 Controlling predators to protect migratory and resident waterbird populations
- 2 Management and monitoring of threatened Little and Fairy Terns
- 3 Control of priority pest plant species to improve fringing habitats
- 4 Managing the impacts of priority pest animals species through monitoring and control activities



Improving the condition of the West Gippsland catchments

Partners WGOMA, GLBWAC, DEDJTR, Gipps Dairy, SFS, Dairy Australia, Murray Goulburn, Forterra, Buma Foods, EPA, MLN, DELWP, PV, WBC, Gippsland Water, BBSIC, OCB, Vic Forests, GA, TFN

Investment \$3.9 million

Activities

- 1 Working with landholders and industry partners to improve production and provide environmental benefits
- 2 Improving riparian and wetland habitats through revegetation, weed control, and vegetation management
- 3 Fencing to exclude stock from along waterways
- 4 Control pest animals to protect important flora and fauna species
- 5 Monitoring invasive pest plants to improve management



Improving the Wetlands of Jones Bay and Lake King

1 Fringing Wetlands of Jones Bay



Delivery Partner—Greening Australia

Project Description
Development of a spatial prioritization tool and management plan that will help manage the Gippsland Lakes wetlands by prioritising locations and techniques. Complete to navigation works as pilot for wetlands to address threats such as altered hydrology, lack of soil for revegetation and invasive weeds.

3 Linking People Land and Lakes Project



Delivery Partner—EGLN (Care Groups)

Project Description
Collecting environmental weeds through the well-established not-for-profit care group network to enhance the biodiversity of 17 Gippsland wetlands through on-ground works, community engagement and education.

4 Water Quality Hot Spots—reducing sediment loads in the Gippsland Lakes



Delivery Partner—EGCMA

Project Description
Implement targeted waterway works to reduce sediment and nutrient loads flowing into the Gippsland Lakes from the Mitchell and Tambo Rivers.

2 Mitchell River Silt Jetties Stabilisation Project



Delivery Partner—Parks Victoria

Project Description
Stabilisation of high risk silt jetties located along the Silt Jetties. Rehabilitation and protection of locations impacted by silt in creeks, and fragmentation and weed control activities to improve native vegetation communities and increase resilience to erosion.

5 Enhancing and maintaining Macleod Morass



Delivery Partner—Parks Victoria

Project Description
Protecting birds, including the Australasian bittern, by controlling or reducing mainly forest with a focus on revegetating local areas and creating knowledge and skills for management of water regimes to assist in ongoing ecological management.

6 EGSC Jones Bay Nutrient Stripping Wetlands Project



Delivery Partner—EGSC

Project Description
Construction of nutrient treatment wetland to reduce the risk of current and increasing nutrient loads and potential contaminants entering the Gippsland Lakes from the Fairbairnsdale industrial area.

8 Reducing physical impacts on wetlands



Delivery Partner—Parks Victoria

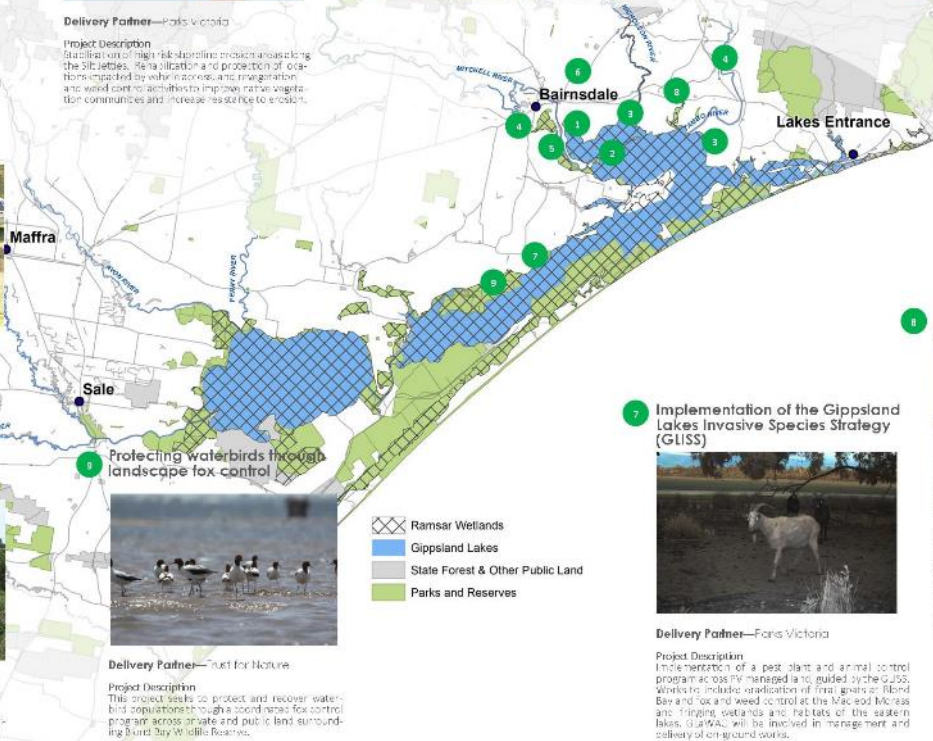
Project Description
Control and access of wetlands to high priority locations adjoining Ramsar wetlands and rehabilitation of disturbed areas, improving environmental conditions for native flora and habitat for native fauna by increasing the quantity and area vegetated and increasing habitat on public land.

7 Implementation of the Gippsland Lakes Invasive Species Strategy (GLISS)



Delivery Partner—Parks Victoria

Project Description
Implementation of a pest plant and animal control program across 19 managed lands guided by the GLISS. Works to include eradication of feral goats on Island Bay and fox and weed control at the Macleod Morass and Fringing wetlands and wetlands of the Salween Lakes. GWA/WA will be involved in management and delivery of on-ground works.



Enhancing Connectivity and Condition around Lake Wellington

10

Protecting, enhancing and managing priority fringing wetlands



Delivery Partner—Greening Australia

Project Description
Development of a special protection tool and management plan that will help manage the Gippsland Lakes wetlands by providing guidance and advice.

This project will stabilize banks, exclude stock through fencing, revegetate wet and buffers and improve plant and soil health. Wellington fringing wetlands adapt, improve their resilience and increase the quality and availability of habitat.

11

Dowd Morass Saline Inundation Assessment and Management Options Project



Delivery Partner—Parks Victoria

Project Description
This project will assess the threat and develop management options to address saline inundation from Lake Wellington in Dowd Morass. The project will provide guidance on short and medium-term objectives and actions for the site.

14

CORE4 in the Macalister Irrigation District Project



Delivery Partner—WCCMA

Project Description

Engage and work with dairy farmers in the Macalister Irrigation District to receive inputs on farm to reduce nutrient loss entering the Gippsland Lakes by implementing on-ground works to better manage effluent storage and treatment.

13

Heart Morass Outlet Structure



Delivery Partner—WCCMA

Project Description

Upgrade of the Heart Morass outlet regulator to improve functionality and operator safety. The structure will help achieve water and salinity management objectives for the wetland.

15

Dealing with dirty rivers, reducing sediment input into Lake Wellington



Delivery Partner—WCCMA

Project Description

This project will reduce sediment and associated nutrient loads to the Gippsland Lakes by implementing on-ground works to address water erosion in the Lake Wellington catchment. On-ground works include riparian fencing, revegetation, weed control, structural interventions.

-  Ramsar Wetlands
-  Gippsland Lakes
-  State Forest & Other Public Land
-  Parks and Reserves

Protecting Traditional Owner Country of the Gippsland Lakes Outer Barrier

15 Implementation of Gippsland Lakes Invasive Species Strategy (GLISS)



Delivery Partner—Parks Victoria

Project Description
Implementation of a pest, plant and animal control program across 14 managed land, guided by the GLISS, which includes monitoring of Sambar deer populations, control of feral pigs and weed control on the Outer Barrier. GLO/WAC will be involved in management and delivery of on-ground works.

16 Understanding and Protecting Cultural values from Shoreline Erosion



Delivery Partner—GLO/WAC

Project Description
An assessment of cultural values under threat from climate change impacts, including shoreline erosion and the implementation of works to mitigate these impacts on key sites.

16 Promoting Gunaikurnai values, stories and involvement across the Gippsland Lakes



Delivery Partner—GLO/WAC

Project Description
This project will undertake communication and engagement activities promoting values and Country. Its benefits: marking cultural and environmental values together and the key role of Traditional Owners in the management of the Gippsland Lakes.

20 Landscape Scale Predator Control



Delivery Partner—Parks Victoria

Project Description
Implement a predator control program across the Gippsland Lakes, with a focus on protecting nesting and roosting bird populations. The program will focus on public land and seek to involve private landholders in an integrated approach to predator control.

17 Restoration and Protection of Seacombe Landing



Delivery Partner—WSP or GLO/WAC

Project Description
Delivery of a program to improve the condition of an area of dining, McLenahan Street and the Gippsland Lakes Coastal Park. The project will include works to protect sensitive shoreline and wetland areas from vehicle access and the revegetation of disturbed or bare ground.

19 Tern Habitat Management



Delivery Partner—DCEW

Project Description
Implementation of mitigation measures and actions to address erosion and loss of available Tern nesting and roosting habitat. Regular monitoring of Tern habitat on Coxsen Island and surrounds for changes in nest distribution and profile.

-  Ramsar Wetlands
-  Gippsland Lakes
-  State Forest & Other Public Land
-  Parks and Reserves

Understanding and Improving Aquatic Habitats and Ecosystems

25 Seagrass friendly boat moorings



Delivery Partner—Gippsland Ports

Project Description
Install seagrass friendly boat moorings for use by the public at priority locations to prevent ongoing damage to seagrass meadows by anchoring or mooring. Block and chain moorings followed by monitoring to determine seagrass return to disturbed sites.

26 Managing Metal Mobility and Bio-availability in the Gippsland Lakes



Delivery Partner—Federation University

Project Description
The project will help guide management decisions for the lakes regarding metal ion solution and the metals mineral that affect mobilisation of metals including oxidation state, salinity, nutrient flux and phosphorus.

23 Invasive Marine Pests – Risk Assessment and Monitoring Program



Delivery Partner—DELWP & PAWIT

Project Description
The program will monitor the presence of marine pests in the Gippsland Lakes, provide vital information about marine pest biology, monitor potential vectors and natural range expansion and educate the public on the risks to the lakes. The project will also provide data to inform potential mitigation and management strategies.

21 Vessels and Burrnan Dolphins in the Gippsland Lakes Project



Delivery Partner—MWF

Project Description
Investigate the number and type of vessels, **TRAFFIC** routes and their impacts on the Burrnan dolphin population. Investigate the impact and management implications of vessels in the lakes against government regulations. This project will include assessment and implementation of management of negative impacts from human activities on the Burrnan dolphin population.

22 Gippsland Lakes Burrnan Dolphin and boats public awareness campaign.



Delivery Partner—MWF

Project Description
Develop a readily available, concise resource for visitors, tour operators, businesses or local government to inform about the Gippsland Lakes Burrnan dolphin, regulations around boats and dolphins, threats, impacts and ways to help protect them.

Bairnsdale
Lakes Entrance

- Ramsar Wetlands
- Gippsland Lakes
- State Forest & Other Public Land
- Parks and Reserves

24 Sediment Phosphorus dynamics

Delivery Partner—Monash University



Project Description
Understand sediment core samples to continue monitoring phosphorus levels within the lakes system, and to assess the presence of sediment 'hotspots' to determine their effect on phosphorus release.

27 Burrnan Dolphin population monitoring



Delivery Partner—MWF

Project Description
Understand population monitoring and build upon baseline information of Burrnan Dolphin breeding, calving, resting and feeding grounds, identify nursery grounds and monitor demographic and behavioural movement patterns of populations in the lakes.

Summary

- The Gippsland Lakes Ramsar Site has a robust governance model that aligns with the recommendations of VAGO
- A wide range of partners (organisations and community) are actively involved in programs of works focussed on the lakes
- The Ramsar Site Management Plan provide clear guidance on monitoring and management actions
- Implementation of the plan and priority actions are underway across the site
- Challenges exist in maintaining and improving the site into the future



Questions?

