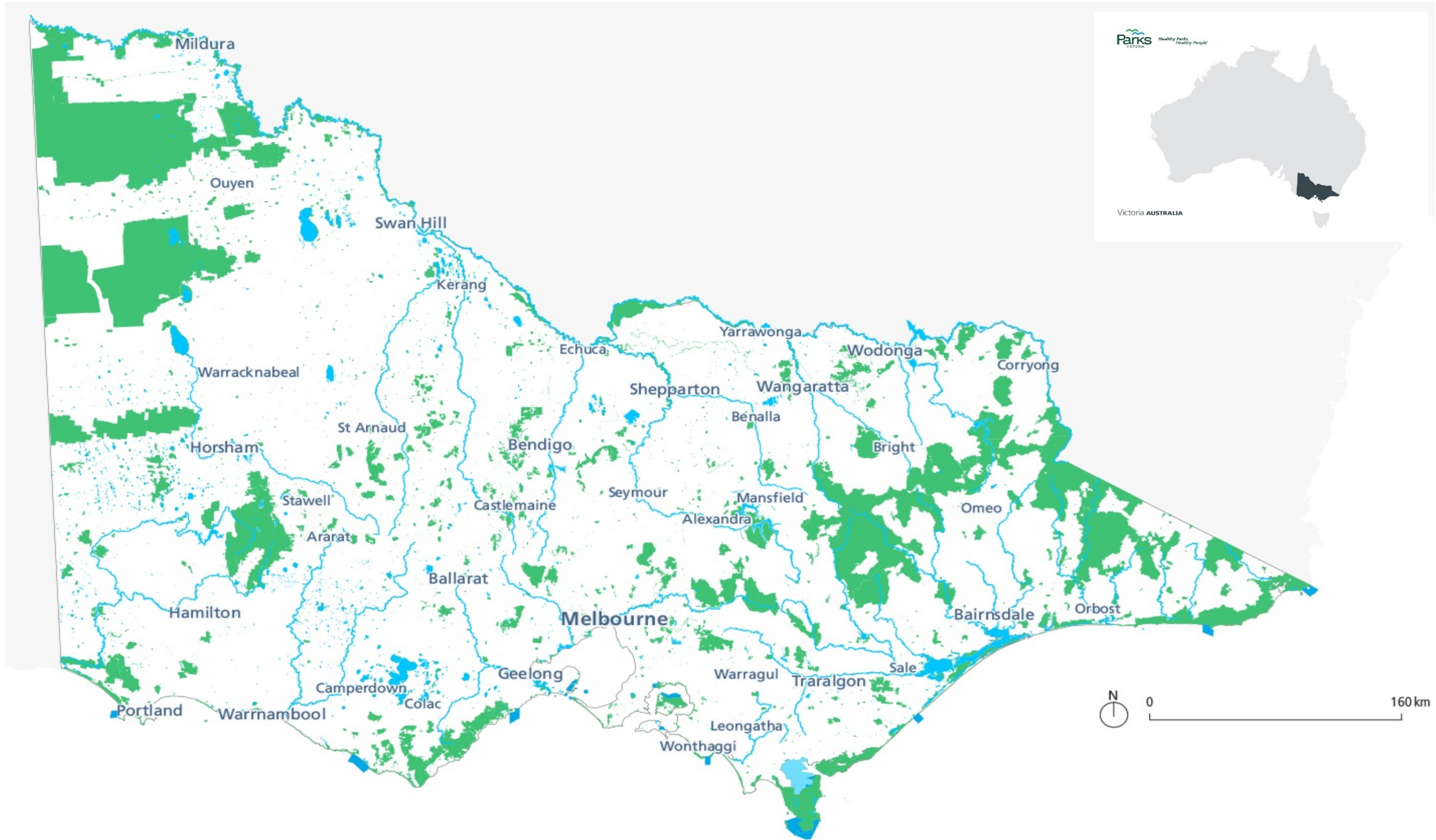


Inquiry into Environmental Infrastructure for Growing Populations

Parks Victoria – May 2021



FOUR MILLION HECTARES - 18% OF VICTORIA



PARKS VICTORIA



71 National & State Parks

13 Marine National Parks

11 Marine Sanctuaries

3 Wilderness Parks

30 Metropolitan Parks, 2700 Reserves

41,000 Assets And Registered Aboriginal Places

15,500km Roads

3,700km Tracks And Trails

430+ Licenced Tour Operators

250 Commercial Agreements

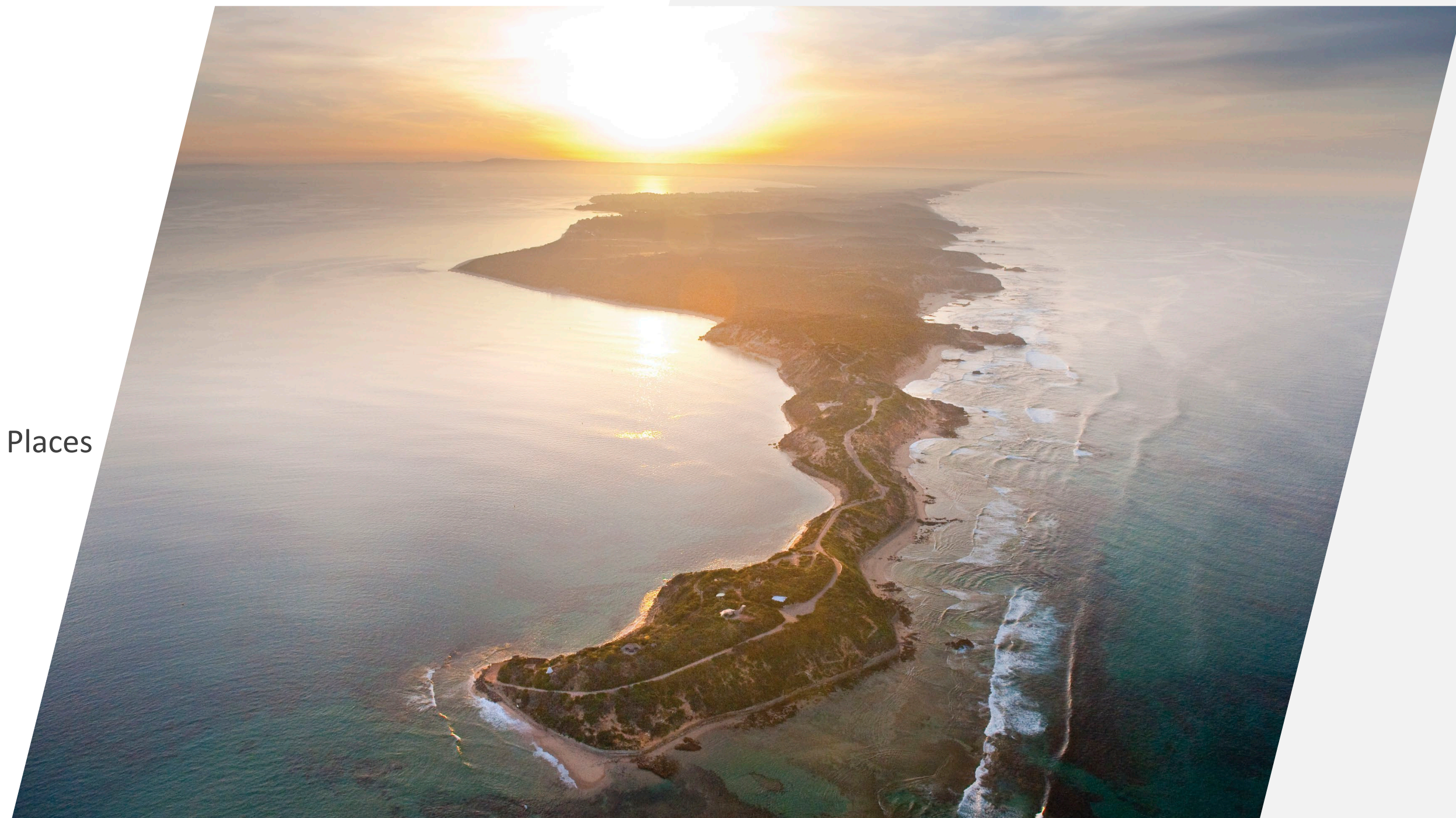
Volunteer & community programs –

222,000 volunteer hours a year

1,600+ Events Per Year

Economic benefits – Park Attributable Tourism Expenditure \$2.1B

Park Attributable Jobs - 20,470



KEY LEGISLATION



***Parks
Victoria Act***



***Conservation, Forests
and Lands Act***



***Crown Land
(Reserves)
Act***



Forests Act



Wildlife Act



Land Act



***Marine Safety
Act***



***National Parks
Act***



Port Management Act

THE COAST AND WATERWAYS



- 2,315 km or 72% of Victoria's coastline.
- Examples:
 - Coastlines of terrestrial parks such as Croajingolong National Park or Point Cook Coastal Park
 - Marine national parks such as Port Phillip Heads, marine sanctuaries and coastal reserves.
- Manage the local ports of Port Phillip, Western Port and Port Campbell under the Port Management Act 1995.
- Waterway Manager, such as recreation on the Yarra River.
- Manage more than \$245+ million worth of maritime infrastructure including piers, jetties and aids to navigation.



WHAT WE DELIVER



69.3 million
Visits



263,000 ha
Water



7
Marine
Protected
Areas



61
Boat Ramps¹



16
Channels



43
Piers and
Jetties²



3000
Moorings



1000
Aids to
Navigation



15
Local
Government
Areas



9
Aquaculture
Fisheries
Reserves



The recreational boating and fishing industries contribute indirect and direct economic outputs of approximately **\$12.6 billion** per year to Victoria and support an estimated **52,000 fulltime positions**.



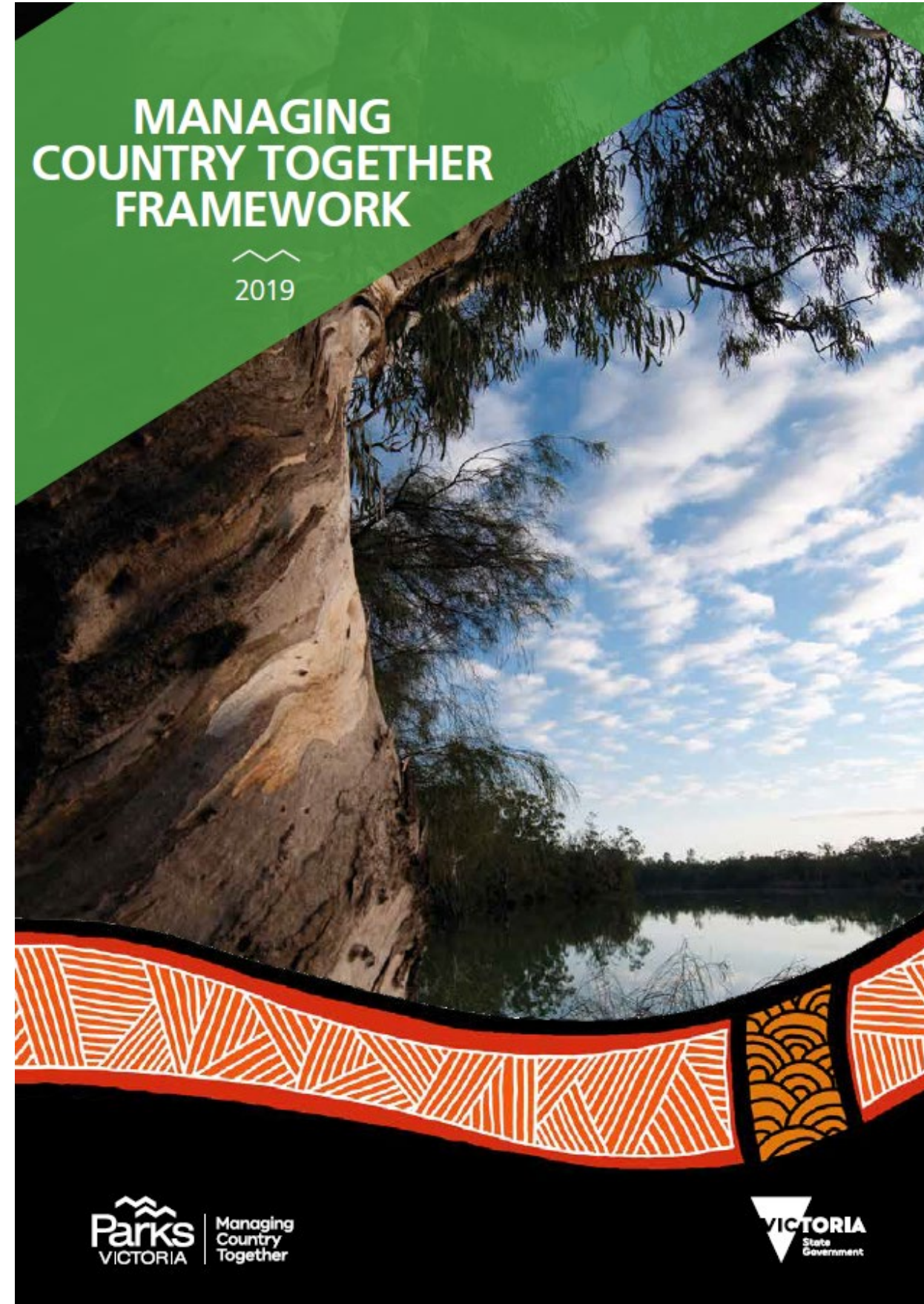
Of the \$2.6 billion direct output from recreational fishing, **\$1.3 billion** is attributable to **the Port Phillip and Western Port region**, directly supporting **8,403 jobs**.



68% of all registered Victorian boats operate on Port Phillip and Western Port

59 Licenced Tour Operators operated in the local ports- 41 in Port Phillip, 8 in Western Port and 10 across both Ports

MANAGING COUNTRY TOGETHER



MANAGING COUNTRY TOGETHER

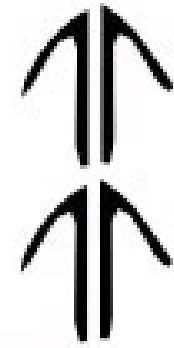


Healthy cultural landscapes managed in partnership with Traditional Owners

Supporting land, water, biodiversity and cultural heritage outcomes

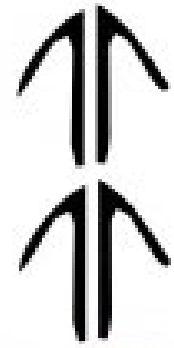
Promoting community health and wellbeing

Providing appropriate and sustainable use of parks



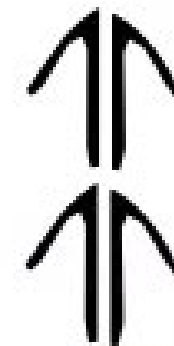
Joint management
being effectively
delivered

Clear and agreed
partnership
arrangements between
Parks Victoria and
Traditional Owners



Aboriginal cultural
heritage effectively
identified, protected
and restored

Aboriginal cultural
heritage values
embedded in park
management and
planning



Capable and supported
Aboriginal workforce in
the park management
sector

High level of cultural
competence and safety
in the organisation



JOINT MANAGEMENT



- Currently 26 parks and reserves (~308,000 hectares)
- Ministerially-appointed Traditional Owner Land Management Boards established to prepare joint management plans and oversight implementation



Healthy Parks Healthy People[®]



Four key principles

- The wellbeing of all societies depends on healthy ecosystems
- Parks nurture healthy ecosystems
- Contact with nature is essential for improving emotional, physical and spiritual health and wellbeing
- Parks are fundamental to economic growth and to vibrant and healthy communities



PARKS VICTORIA AS A PARTNER



Planning together with Traditional Owner communities

Partnerships with other authorities such as CMAs and Melbourne Water in habitat programs or landscape, other government entities on matters such as mountain biking directions or fishing, and VPA or councils on precinct level planning and change.

Over 350 different community groups volunteer on the parks estate, attracting around 20,000 volunteers. This makes PV one of the State's largest volunteer involving organisations

Volunteering activity includes not only working with more than 100 Friends Groups, but we also work with many other community groups including recreational user groups (e.g. bushwalking, mountain biking, shooting), heritage groups as well as field naturalist and citizen science groups

Parks Victoria also directly manages a growing Parkhost program including Volunteer Track Rangers, Campground Host, Trailrider (all terrain wheelchair) hosts, and Parkwalks hosts. These programs are increasingly attracting younger volunteers.



PARKS VICTORIA AS A PARTNER



Examples of current and emerging community partnerships include:

- AMES Australia and Southern Migrant Refugee Centre to encourage new migrants and refugee communities to learn about and participate in nature
- Scouts Victoria
- Blind Sports Victoria (e.g. sensory trails and “walk in the park” program)
- Dementia Australia (building Australia’s first dementia trail at Ballarat)
- South East Melbourne Primary Healthcare Network – to provide resources for health practitioners to encourage park experiences for improved health and wellbeing)
- YMCA (all abilities camping)
- Heart Foundation (heart health walks)
- AMAZE (supporting children with autism to experience parks)
- Bush Kinders
- Earthwatch citizen science programs
- Many schools and educational groups
- Bushwalking Victoria
- Victoria Walks
- Live Life Get Active (‘green exercise’ in parks)



OVERVIEW OF CURRENT INITIATIVES



Victoria's Great Outdoors

Park Victoria is delivering \$64.54 million part of the \$105.6 million program

Suburban Parks Program

Parks Victoria is delivering \$27.35 million in projects

Other Initiatives

- Wilsons Prom Revitalisation - \$23 million
- St Kilda Pier - \$50.3 million
- Gariwerd Projects - \$18.76 million
- Falls to Hotham Stage 1 - \$15 million
- Murray River Adventure Trail
- Cape Conran - \$3.5 million
- Altona Pier - \$10 million
- Tower Hill - \$11.3 million
- Fire Recovery Projects



VICTORIA'S GREAT OUTDOORS



Park Victoria is delivering a \$64.54 million program featuring:

- Campgrounds, 4WD and Trails
- Seasonal rangers
- Yallock-Bulluk Marine and Coastal Park
- Volunteer innovation
- Cut camping fees

The diverse program is all about getting people in nature



We are investing **\$105.6 million** in Victoria's Great Outdoors to deliver better forests, campgrounds, parks, tracks and outdoor facilities.

SUBURBAN PARKS PROGRAM

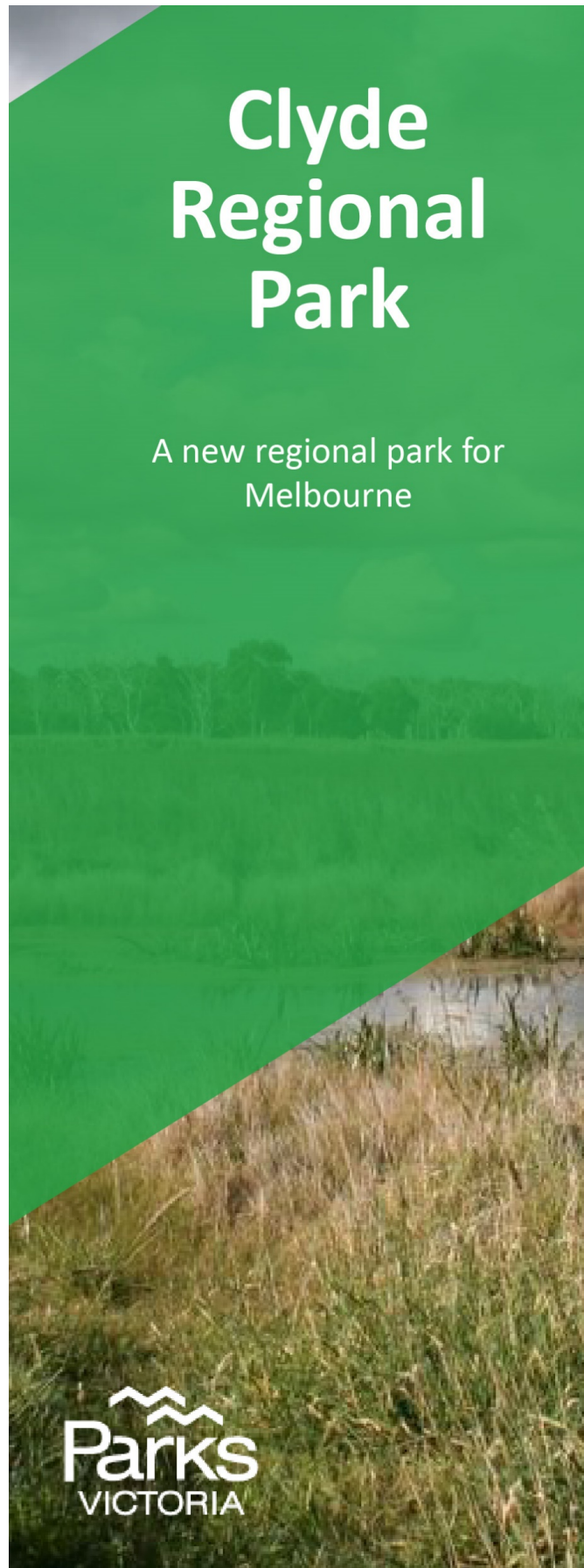


Park Victoria is delivering a \$ 27.35 million program featuring:

- Plenty River Trail - \$19.3 million
- Wattle Park - \$4.3 million
- 3 new regional parks
- Refreshed planning for Werribee River & Toolern



SUBURBAN PARKS PROGRAM – CLYDE REGIONAL PARK



What is Clyde Regional Park?



50 kilometres south-east of Melbourne centre



Located in the **City of Casey**
2km from the Shire of Cardinia



120 hectares of open space

3x Bigger than Royal Botanic Gardens Melbourne

Similar size to Pines Flora & Fauna Reserve in Frankston



combined

with the future drainage basin and Clyde Park Sports Precinct

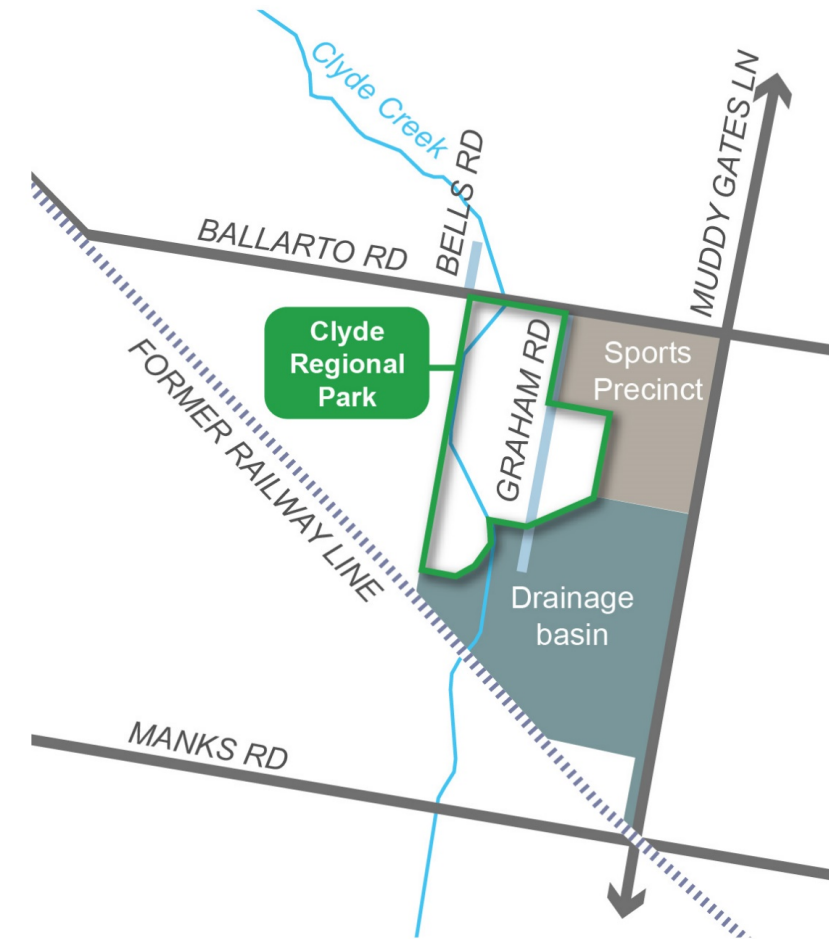
400 hectare total

Similar size to entire Cranbourne Botanic Gardens including bushland area



1 of 3

new regional parks for Melbourne




SUBURBAN PARKS PROGRAM – KOROROIT CREEK REGIONAL PARK



Kororoit Creek Regional Park

A new regional park for Melbourne



What is Kororoit Creek Regional Park?



25 kilometres north-west of Melbourne centre



Located in the **City of Melton** West of Caroline Springs



Existing and future communities will surround the park



215 hectares of open space
Includes the Clarke Road Streamside Reserve
45-hectare conservation area beside the new park, a total **260-hectare of new green space**



Consists of critically endangered **native grasslands** and **Growing Grass Frog** habitat



1 of 3 new regional parks for Melbourne



SUBURBAN PARKS PROGRAM – WERRIBEE TOWNSHIP REGIONAL PARK



What is Werribee Township Regional Park?



30 kilometres south-west of Melbourne centre



Located in the **City of Wyndham**



3km from Werribee Train Station

2.5km from Wyndham Vale Station

Next to Presidents Park



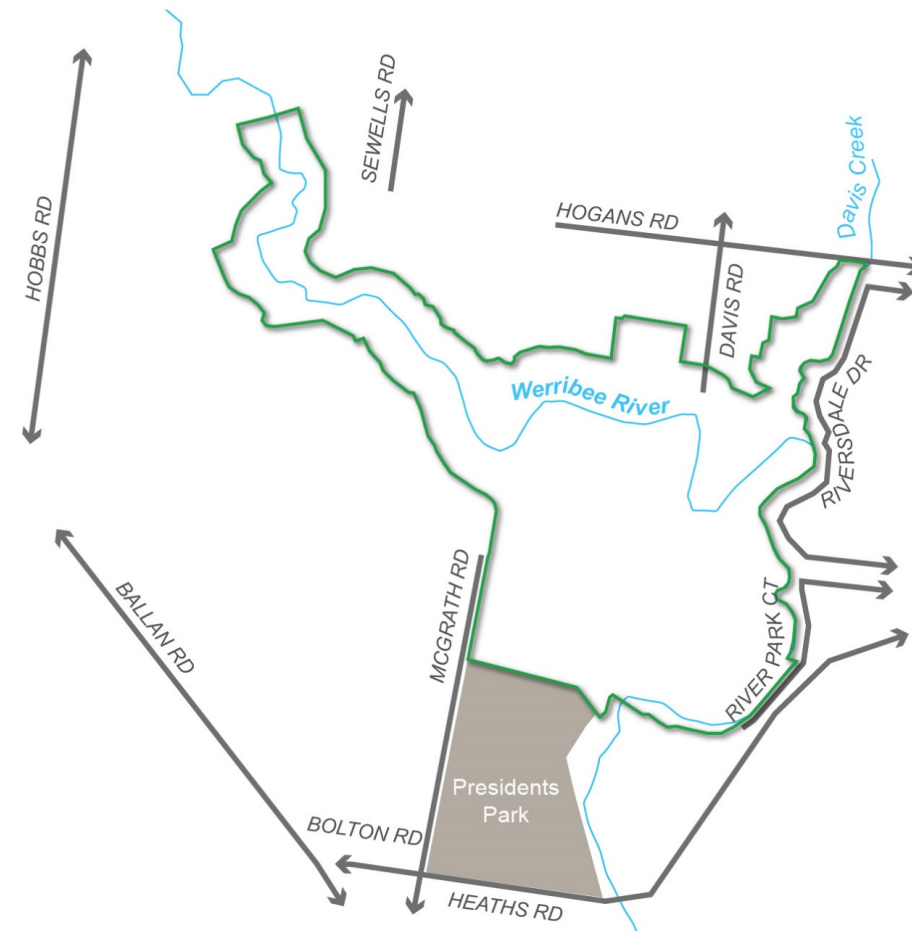
340 hectares of open space



Critical Growing Grass Frog habitat



1 of 3 new regional parks for Melbourne



SUBURBAN PARKS PROGRAM – WERRIBEE TOWNSHIP REGIONAL PARK



What makes Werribee Township Regional Park special?

It will also support the environmental management and protection of natural and cultural heritage values of these parklands for generations to come.

Environmental Values



The whole park is classified as a conservation area, specifically for **Growing Grass Frogs**

Other environmental features of the land include River Red Gums and the Werribee River home to **native birds, fish and the platypus**



Much of the site has recently been used for market gardens and so revegetation will provide new **native plants**, increased **canopy tree cover** and plenty of room for **visitor facilities**

Heritage



There are **many scattered artefacts** through the park, especially close to the banks of the Werribee River

Wadawurrung people are the **Registered Aboriginal Party** for the west side of the Werribee River. Traditional Owners are not formally recognised east of the river



Strengthen and celebrate Aboriginal history and cultural heritage values throughout the park

Agricultural landscape connections could be explored and interpreted in the park

Health and Wellbeing



The City of Wyndham is amongst the **fastest growing communities** in Victoria

Together with Presidents Park and new sports grounds there will be a **network of parklands** for the community to enjoy

Socio-economic changes have caused significant growth in **casual and unstructured exercise** such as socialising and walking



New regional parks ensure surrounding communities can experience **nature, promote physical activity and social connections**, and a **break** from urban surrounds

How can the community be involved?

What is Parks Victoria delivering?



Park Plan

Parks Victoria is leading the development of a Park Plan for the future Werribee Township Regional Park. The high-level plan will set the vision and principles for the park which will be developed with and by the community along with key stakeholders, and strategies to achieve that vision.



Early Works

The government has committed approximately \$500,000 for early works delivery in the park. Details around what early works are appropriate for the park will be determined through the preparation of the Park Plan.

Timelines



Upcoming consultation



Parks Victoria wants to hear your ideas and feedback!

Get involved by doing a survey or come to a workshop in May and June 2021!

SUBURBAN PARKS PROGRAM – TOOLERN CREEK REGIONAL PARK



Toolern Creek Regional Park

Masterplan Refresh



What is Toolern Creek Regional Park?




-  35km west of Melbourne centre in the City of Melton
-  130 hectares
-  Creek escarpments with steep basalt cliffs, and indigenous remnant vegetation
-  Parks Victoria developed the 2009 Masterplan and delivered some park infrastructure
-  The park is currently owned and managed by Melton City Council



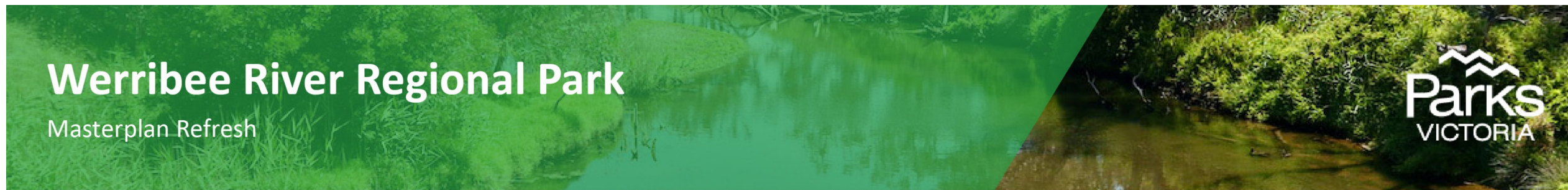
The following works were completed by Parks Victoria and opened in 2011:

- A 3.5km three-metre wide shared trail from Bridge Road to Strathtulloh Circuit
- Boundary fencing
- Landscaping
- Basic visitor picnic facilities
- Informal access trails to the creek
- Seating
- Basic signage and interpretation

LEGEND

-  2009 Masterplan park boundary
-  Extension of park planning boundary
-  Existing roads

SUBURBAN PARKS PROGRAM – WERRIBEE RIVER REGIONAL PARK



What is Werribee River Regional Park?



30km south-west of Melbourne centre in the City of Wyndham



223 hectares



The park offers stunning views over the river and hosts a wide range of environmentally significant values.



Parks Victoria developed the 2009 Masterplan and delivered some park infrastructure



The park is currently owned and managed by Parks Victoria



The following works were completed by Parks Victoria and opened in 2011:

- > Small carpark
- > Shared trail
- > Picnic area on the riverbank
- > Bridge over the river to the Werribee Mansion and Zoo

LEGEND

- Park boundary
- Existing roads
- 1** Werribee Open Range Zoo
- 2** Werribee Park
- 3** National Equestrian Centre
- 4** Rose Garden
- 5** Shadowfax Winery
- 6** Werribee Park Golf Club
- 7** Western Treatment Plant

OTHER GOVERNMENT FUNDED INITIATIVES



State Budget (Nov 2020) for renewal and enhancement of urban facilities

- Asset – preventative, monitoring and maintenance, make safe for high consequence assets – total \$31 million
- Urban Park Active Wellbeing - \$21 million
- Safer playgrounds - \$1.3 million
- Staff – 57 Rangers plus support staff
- Additional cleaning toilets and playscapes - \$2 million
- Specific initiatives
 - Olinda - \$3.4 million
 - Jells Park - \$5.9 million
 - Corben Oval at Yarra Bend Park - \$1.6 million



BENEFIT CALCULATION



Valuing Victoria's Parks

DELWP and Parks Victoria project to calculate benefits using an environmental accounting framework

<https://www.parks.vic.gov.au/about-us/valuing-victorias-parks>

Evaluation against Parks Victoria's strategic pillars

Parks Victoria has been using a 'benefit evaluation tool' for assessing scale of impact and contribution of any action

Quantitative approach to the benefits in the context of scale, time, beneficiaries



LANDSCAPE APPROACH TO PARK PLANNING AND MANAGEMENT

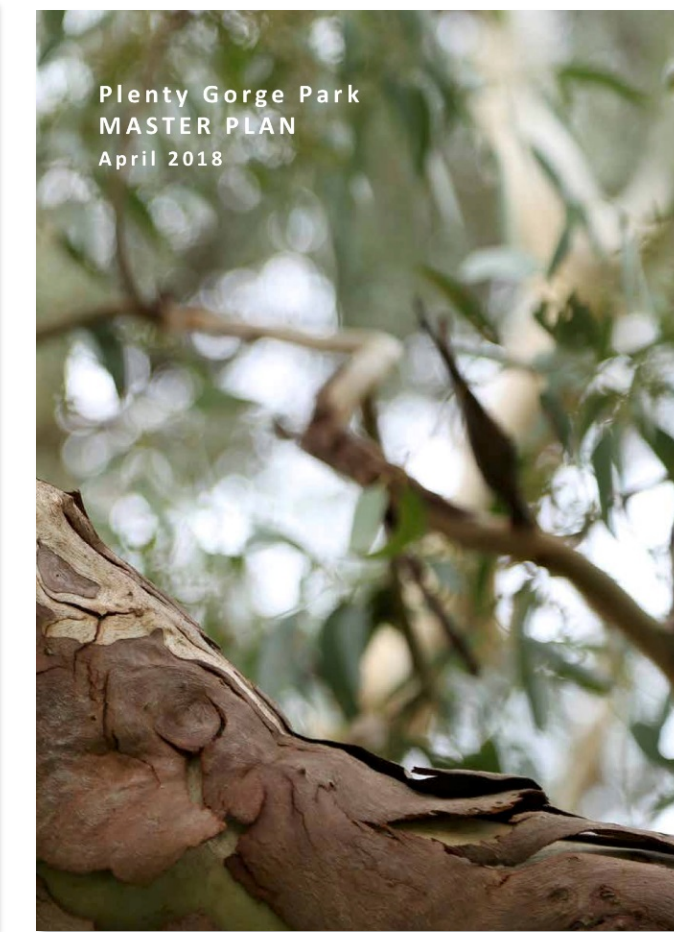
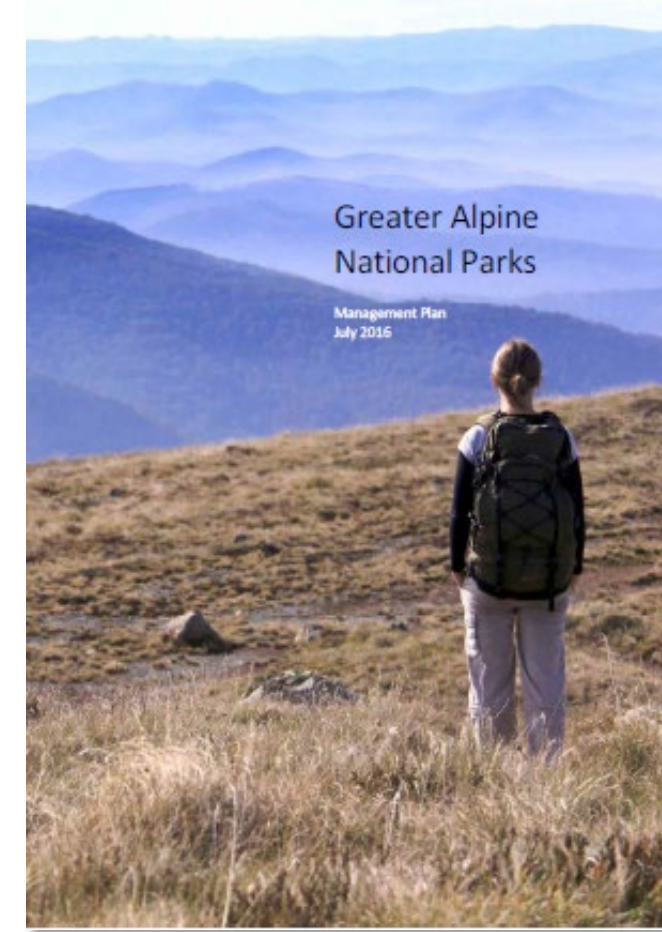
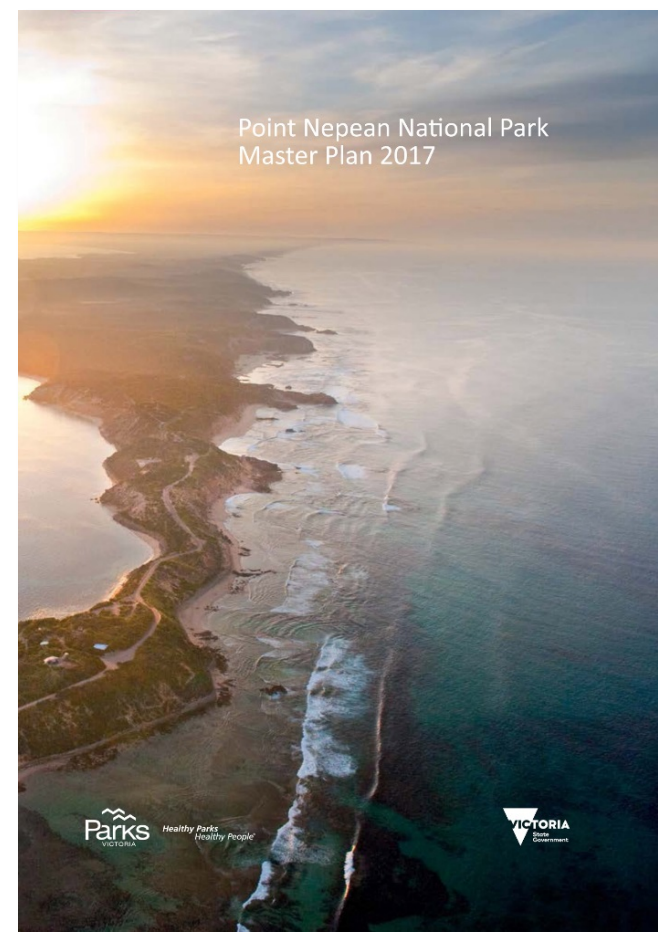
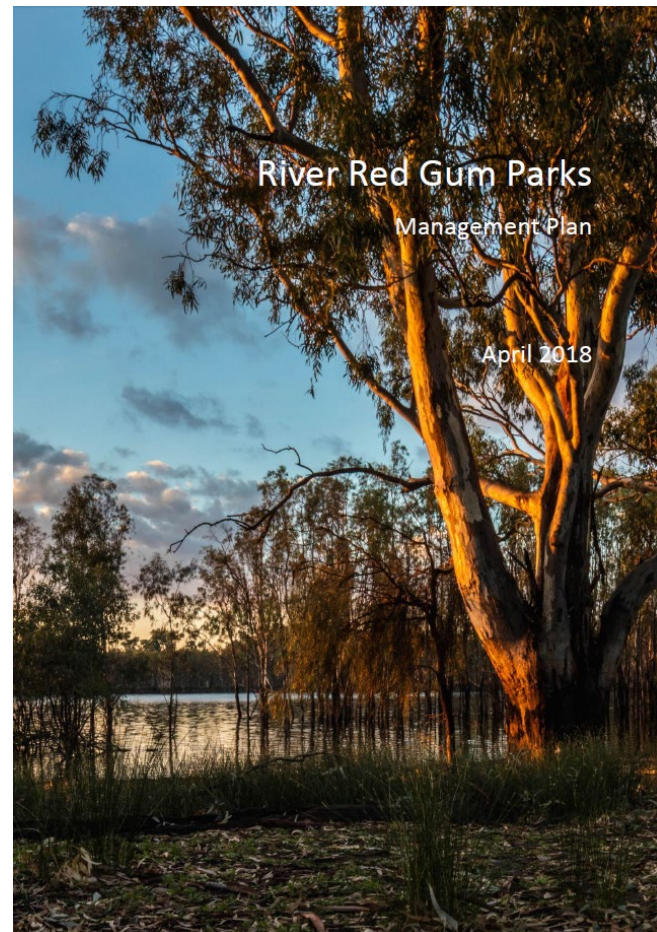


A landscape approach is important for managing the park network to recognise landscape-scale processes that often extend beyond traditional management boundaries.

Application of planning to protect habitats and provide ecosystem services; facilitate visitor journeys and nature-based experiences; connection of economic outcomes and community needs.

It also acknowledges the importance of cultural landscapes.

Where needed, Parks Victoria also takes a master plan focus such as for Point Nepean National Park or Plenty Gorge Park



LAND MANAGEMENT STRATEGY



Parks Victoria is preparing an inaugural Land Management Strategy (LMS) to frame how the parks network responds to key factors like:

- Healthy and resilient natural environments
- Enabling Traditional Owner self-determination
- Positive community and visitor health and wellbeing outcomes
- Climate change mitigation and adaptation
- Support for a strong nature-based tourism economy
- Managing the landscape through partnerships

Parks Victoria is preparing this LMS to provide a robust set of aspirations, principles, themes and indicators as to how the parks estate will be protected, enhanced and valued.

Community consultation on a draft will occur in 2021



THANK YOU