

ELECTORATE

REPRESENTING YOUR ELECTORATE

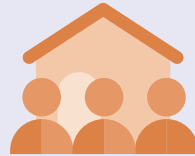
Your electorate is the size of a regional city. Most people live in houses with front and back yards. Many essential services are accessible, but travel is required for specialised services.

The people you represent are incredibly diverse, coming from different backgrounds, with different lived-experiences and interests.

However, there are generally two things that your electorate agrees upon:



ACCESSIBILITY



COMMUNITY

On behalf of your electorate consider:

Which areas should be higher priority

How areas of higher priority might benefit the electorate

Which areas should be lower priority



ELECTORATE

REPRESENTING YOUR ELECTORATE

Your electorate is the size of a regional city. Most people live in houses with front and back yards. Many essential services are accessible, but travel is required for specialised services.

The people you represent are incredibly diverse, coming from different backgrounds, with different lived-experiences and interests.

However, there are generally two things that your electorate agrees upon:



ACCESSIBILITY



EDUCATION

On behalf of your electorate consider:

Which areas should be higher priority

How areas of higher priority might benefit the electorate

Which areas should be lower priority



ELECTORATE

REPRESENTING YOUR ELECTORATE

Your electorate is the size of a regional city. Most people live in houses with front and back yards. Many essential services are accessible, but travel is required for specialised services.

The people you represent are incredibly diverse, coming from different backgrounds, with different lived-experiences and interests.

However, there are generally two things that your electorate agrees upon:



ACCESSIBILITY



SAFETY

On behalf of your electorate consider:

Which areas should be higher priority

How areas of higher priority might benefit the electorate

Which areas should be lower priority



ELECTORATE

REPRESENTING YOUR ELECTORATE

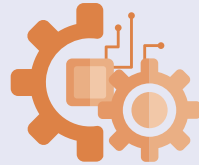
Your electorate is the size of a regional city. Most people live in houses with front and back yards. Many essential services are accessible, but travel is required for specialised services.

The people you represent are incredibly diverse, coming from different backgrounds, with different lived-experiences and interests.

However, there are generally two things that your electorate agrees upon:



ACCESSIBILITY



TECHNOLOGY

On behalf of your electorate consider:

Which areas should be higher priority

How areas of higher priority might benefit the electorate

Which areas should be lower priority



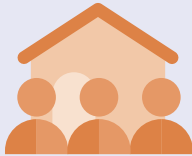
ELECTORATE

REPRESENTING YOUR ELECTORATE

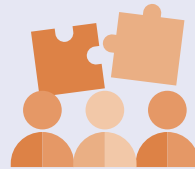
Your electorate is the size of a regional city. Most people live in houses with front and back yards. Many essential services are accessible, but travel is required for specialised services.

The people you represent are incredibly diverse, coming from different backgrounds, with different lived-experiences and interests.

However, there are generally two things that your electorate agrees upon:



COMMUNITY



CULTURE

On behalf of your electorate consider:

Which areas should be higher priority

How areas of higher priority might benefit the electorate

Which areas should be lower priority



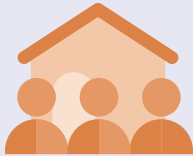
ELECTORATE

REPRESENTING YOUR ELECTORATE

Your electorate is the size of a regional city. Most people live in houses with front and back yards. Many essential services are accessible, but travel is required for specialised services.

The people you represent are incredibly diverse, coming from different backgrounds, with different lived-experiences and interests.

However, there are generally two things that your electorate agrees upon:



COMMUNITY



EMPLOYMENT

On behalf of your electorate consider:

Which areas should be higher priority

How areas of higher priority might benefit the electorate

Which areas should be lower priority



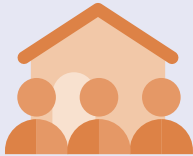
ELECTORATE

REPRESENTING YOUR ELECTORATE

Your electorate is the size of a regional city. Most people live in houses with front and back yards. Many essential services are accessible, but travel is required for specialised services.

The people you represent are incredibly diverse, coming from different backgrounds, with different lived-experiences and interests.

However, there are generally two things that your electorate agrees upon:



COMMUNITY



TRADITION

On behalf of your electorate consider:

Which areas should be higher priority

How areas of higher priority might benefit the electorate

Which areas should be lower priority



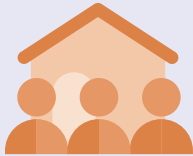
ELECTORATE

REPRESENTING YOUR ELECTORATE

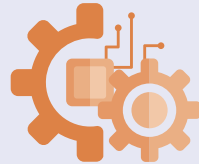
Your electorate is the size of a regional city. Most people live in houses with front and back yards. Many essential services are accessible, but travel is required for specialised services.

The people you represent are incredibly diverse, coming from different backgrounds, with different lived-experiences and interests.

However, there are generally two things that your electorate agrees upon:



COMMUNITY



TECHNOLOGY

On behalf of your electorate consider:

Which areas should be higher priority

How areas of higher priority might benefit the electorate

Which areas should be lower priority



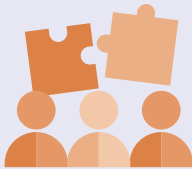
ELECTORATE

REPRESENTING YOUR ELECTORATE

Your electorate is the size of a regional city. Most people live in houses with front and back yards. Many essential services are accessible, but travel is required for specialised services.

The people you represent are incredibly diverse, coming from different backgrounds, with different lived-experiences and interests.

However, there are generally two things that your electorate agrees upon:



CULTURE



EDUCATION

On behalf of your electorate consider:

Which areas should be higher priority

How areas of higher priority might benefit the electorate

Which areas should be lower priority



ELECTORATE

REPRESENTING YOUR ELECTORATE

Your electorate is large and includes farms, regional towns and some scrub/bush. Nearly everyone lives in houses or on farms. The towns have some basic services, but most people need to travel to access at least some essential services.

The people you represent are incredibly diverse, coming from different backgrounds, with different lived-experiences and interests.

However, there are generally two things that your electorate agrees upon:



CULTURE



SAFETY

On behalf of your electorate consider:

Which areas should be higher priority

How areas of higher priority might benefit the electorate

Which areas should be lower priority



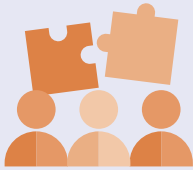
ELECTORATE

REPRESENTING YOUR ELECTORATE

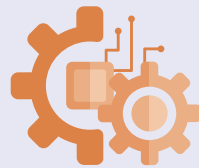
Your electorate is large and includes farms, regional towns and some scrub/bush. Nearly everyone lives in houses or on farms. The towns have some basic services, but most people need to travel to access at least some essential services.

The people you represent are incredibly diverse, coming from different backgrounds, with different lived-experiences and interests.

However, there are generally two things that your electorate agrees upon:



CULTURE



TECHNOLOGY

On behalf of your electorate consider:

Which areas should be higher priority

How areas of higher priority might benefit the electorate

Which areas should be lower priority



ELECTORATE

REPRESENTING YOUR ELECTORATE

Your electorate is large and includes farms, regional towns and some scrub/bush. Nearly everyone lives in houses or on farms. The towns have some basic services, but most people need to travel to access at least some essential services.

The people you represent are incredibly diverse, coming from different backgrounds, with different lived-experiences and interests.

However, there are generally two things that your electorate agrees upon:



EDUCATION



LAW

On behalf of your electorate consider:

Which areas should be higher priority

How areas of higher priority might benefit the electorate

Which areas should be lower priority



ELECTORATE

REPRESENTING YOUR ELECTORATE

Your electorate is large and includes farms, regional towns and some scrub/bush. Nearly everyone lives in houses or on farms. The towns have some basic services, but most people need to travel to access at least some essential services.

The people you represent are incredibly diverse, coming from different backgrounds, with different lived-experiences and interests.

However, there are generally two things that your electorate agrees upon:



EDUCATION



SAFETY

On behalf of your electorate consider:

Which areas should be higher priority

How areas of higher priority might benefit the electorate

Which areas should be lower priority



ELECTORATE

REPRESENTING YOUR ELECTORATE

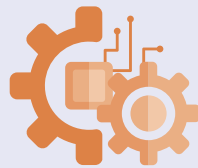
Your electorate is large and includes farms, regional towns and some scrub/bush. Nearly everyone lives in houses or on farms. The towns have some basic services, but most people need to travel to access at least some essential services.

The people you represent are incredibly diverse, coming from different backgrounds, with different lived-experiences and interests.

However, there are generally two things that your electorate agrees upon:



EDUCATION



TECHNOLOGY

On behalf of your electorate consider:

Which areas should be higher priority

How areas of higher priority might benefit the electorate

Which areas should be lower priority



ELECTORATE

REPRESENTING YOUR ELECTORATE

Your electorate is large and includes farms, regional towns and some scrub/bush. Nearly everyone lives in houses or on farms. The towns have some basic services, but most people need to travel to access at least some essential services.

The people you represent are incredibly diverse, coming from different backgrounds, with different lived-experiences and interests.

However, there are generally two things that your electorate agrees upon:



EMPLOYMENT



TRADITION

On behalf of your electorate consider:

Which areas should be higher priority

How areas of higher priority might benefit the electorate

Which areas should be lower priority



ELECTORATE

REPRESENTING YOUR ELECTORATE

Your electorate is large and is considered remote, with mostly farms and scrub/bush, with some very small towns. The population is small, and everyone must travel to access essential services.

The people you represent are incredibly diverse, coming from different backgrounds, with different lived-experiences and interests.

However, there are generally two things that your electorate agrees upon:



TRADITION



LAW

On behalf of your electorate consider:

Which areas should be higher priority

How areas of higher priority might benefit the electorate

Which areas should be lower priority



ELECTORATE

REPRESENTING YOUR ELECTORATE

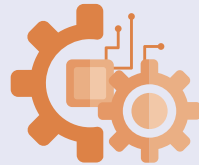
Your electorate is large and is considered remote, with mostly farms and scrub/bush, with some very small towns. The population is small, and everyone must travel to access essential services.

The people you represent are incredibly diverse, coming from different backgrounds, with different lived-experiences and interests.

However, there are generally two things that your electorate agrees upon:



TRADITION



TECHNOLOGY

On behalf of your electorate consider:

Which areas should be higher priority

How areas of higher priority might benefit the electorate

Which areas should be lower priority



ELECTORATE

REPRESENTING YOUR ELECTORATE

Your electorate is large and is considered remote, with mostly farms and scrub/bush, with some very small towns. The population is small, and everyone must travel to access essential services.

The people you represent are incredibly diverse, coming from different backgrounds, with different lived-experiences and interests.

However, there are generally two things that your electorate agrees upon:



LAW



SAFETY

On behalf of your electorate consider:

Which areas should be higher priority

How areas of higher priority might benefit the electorate

Which areas should be lower priority



ELECTORATE

REPRESENTING YOUR ELECTORATE

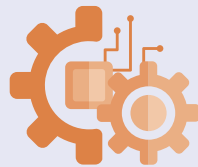
Your electorate is large and is considered remote, with mostly farms and scrub/bush, with some very small towns. The population is small, and everyone must travel to access essential services.

The people you represent are incredibly diverse, coming from different backgrounds, with different lived-experiences and interests.

However, there are generally two things that your electorate agrees upon:



LAW



TECHNOLOGY

On behalf of your electorate consider:

Which areas
should be higher
priority

How areas of higher
priority might benefit
the electorate

Which areas
should be lower
priority



ELECTORATE

REPRESENTING YOUR ELECTORATE

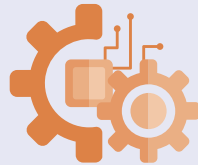
Your electorate is large and is considered remote, with mostly farms and scrub/bush, with some very small towns. The population is small, and everyone must travel to access essential services.

The people you represent are incredibly diverse, coming from different backgrounds, with different lived-experiences and interests.

However, there are generally two things that your electorate agrees upon:



EMPLOYMENT



TECHNOLOGY

On behalf of your electorate consider:

Which areas should be higher priority

How areas of higher priority might benefit the electorate

Which areas should be lower priority



ELECTORATE

REPRESENTING YOUR ELECTORATE

Your electorate is the size of a regional city. Most people live in houses with front and back yards. Many essential services are accessible, but travel is required for specialised services. Nearly everyone lives in houses or on farms.

The people you represent are incredibly diverse, coming from different backgrounds, with different lived-experiences and interests.

However, there are generally two things that your electorate agrees upon:



EDUCATION



LAW

On behalf of your electorate consider:

Which areas should be higher priority

How areas of higher priority might benefit the electorate

Which areas should be lower priority



ELECTORATE

REPRESENTING YOUR ELECTORATE

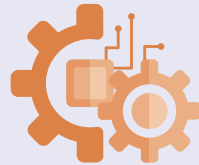
Your electorate is the size of a regional city. Most people live in houses with front and back yards. Many essential services are accessible, but travel is required for specialised services.

The people you represent are incredibly diverse, coming from different backgrounds, with different lived-experiences and interests.

However, there are generally two things that your electorate agrees upon:



TRADITION



TECHNOLOGY

On behalf of your electorate consider:

Which areas should be higher priority

How areas of higher priority might benefit the electorate

Which areas should be lower priority



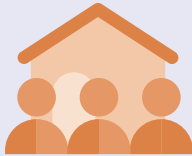
ELECTORATE

REPRESENTING YOUR ELECTORATE

Your electorate is large and includes farms, regional towns and some scrub/bush. Nearly everyone lives in houses or on farms. The towns have some basic services, but most people need to travel to access at least some essential services.

The people you represent are incredibly diverse, coming from different backgrounds, with different lived-experiences and interests.

However, there are generally two things that your electorate agrees upon:



COMMUNITY



EMPLOYMENT

On behalf of your electorate consider:

Which areas should be higher priority

How areas of higher priority might benefit the electorate

Which areas should be lower priority



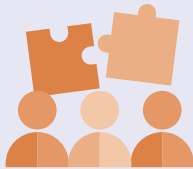
ELECTORATE

REPRESENTING YOUR ELECTORATE

Your electorate is large and is considered remote, with mostly farms and scrub/bush, with some very small towns. The population is small, and everyone must travel to access essential services.

The people you represent are incredibly diverse, coming from different backgrounds, with different lived-experiences and interests.

However, there are generally two things that your electorate agrees upon:



CULTURE



EDUCATION

On behalf of your electorate consider:

Which areas
should be higher
priority

How areas of higher
priority might benefit
the electorate

Which areas
should be lower
priority

