

ARTS AND CULTURE



VICTORIA 2050

The parliament of the past decided to place a low priority on arts and culture. Therefore, there has not been much thought put into:

- The development of new small venues
- Arts and cultural events for diverse populations

DESIGN CHALLENGE

Design a series of wayfinding signs (directions) that helps the people of Victoria in 2050 locate different parts of the arts and cultural industries and events. Consider:

What are the different sources of art and culture and where is it located?

What different signs might be needed? (think arrows and icons)

What colour coding and other design features might be able to help?

Will people be able to easily understand the different symbols and icons?

How might the signs be enhanced to help people who speak different languages or for people with low or no vision?

RULES

You must

Include the development of new small venues

Design arts and cultural events
for diverse populations

Share, if asked, information with any high priority area



You may

Use any details from the scenario

Use any current consideration details from the original arts and culture card

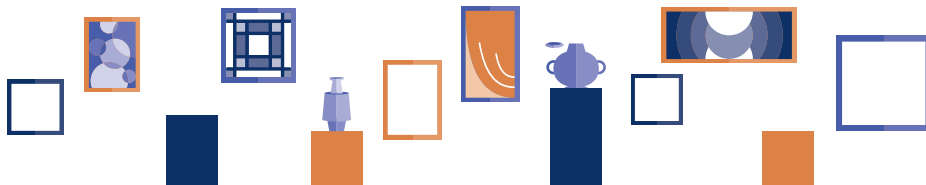
You must not:

Ask for support and information from any other area

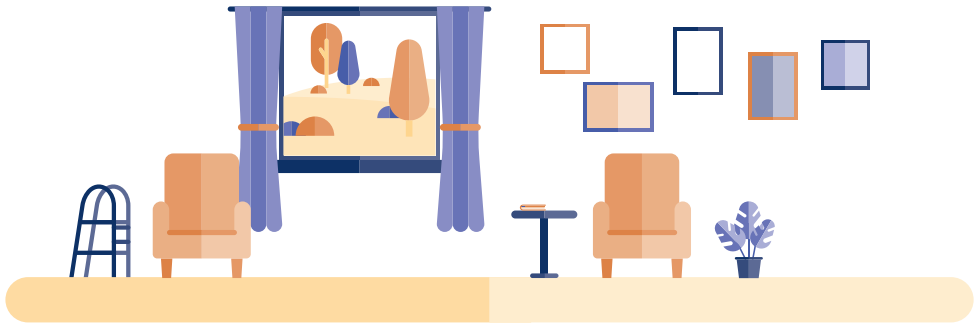
Share any information with any other low priority area

Use any future consideration details from the original arts and culture card

Design a different type of artefact representing the future of arts and culture in Victoria



AGED CARE



VICTORIA 2050

The parliament of the past decided to place a low priority on aged-care. Therefore, there has not been much consideration of:

- expanding community programs to address social isolation
- expanding community-based transport services for employees and seniors at facilities

DESIGN CHALLENGE

Design a magazine cover about aged-care for the people of Victoria 2050. Consider the following:

The magazine's brand.
(Think about design choices
for your key audience)

The title of your magazine

The main cover story and
image

what other stories (headlines
and teasers) will appear in
the issue

How often it is published and how much it costs. Is it print,
digital or both?

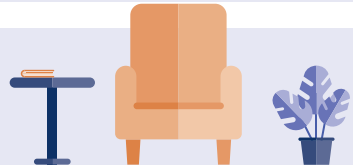
RULES

You must:

Consider community programs to address social isolation

Consider community-based transport services for employees and seniors at facilities

Share, if asked, information with any high priority area



You may:

Use any details from the scenario

Use any current consideration details from the original aged-care card

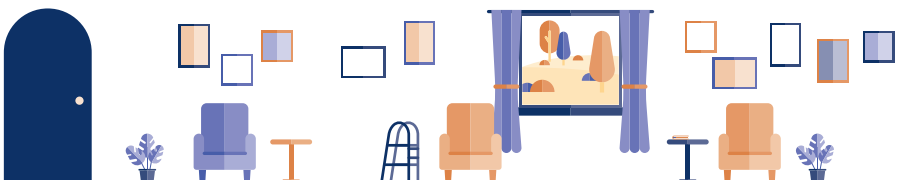
You must not:

Ask for support and information from any other area

Share any information with any other low priority area

Use any future consideration details from the original aged-care card

Design a different type of artefact representing the future of aged-care in Victoria 2050



EDUCATION



VICTORIA 2050

The parliament of the past decided to place a low priority on education. Therefore, there has not been much consideration of:

- expanding access to virtual schools and online learning resources
- the location of schools in high demand areas

DESIGN CHALLENGE

Design product packaging for the education options available to the people of Victoria in 2050. Consider the following:

The products and branding.
(Think about design choices
for your key audience)

The name and description of
the product

Any advice on how to
dispose of the packaging

The ingredients and direction for
use, as well as any important
storage advice (if applicable)

How the product is packaged. For instance, does the
packaging need to be durable, tamper proof, easy to reseal

RULES

You must:

Consider how access to virtual schools and online resources has been expanded

Consider where new schools have been built

Share, if asked, information with any high priority area



You may:

Use any details from the scenario

Use any current consideration details from the original education card

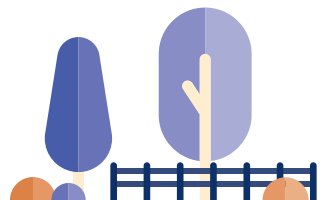
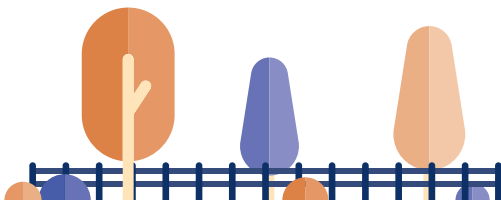
You must not:

Ask for support and information from any other area

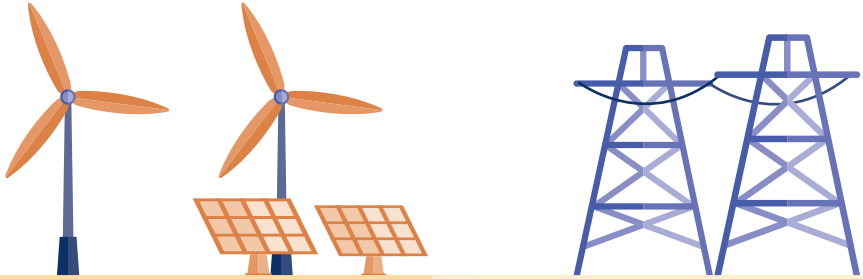
Share any information with any other low priority area

Use any future consideration details from the original education card

Design a different type of artefact representing the future of education in Victoria 2050



ENERGY SUPPLY



VICTORIA 2050

The parliament of the past decided to place a high priority on energy supply. Therefore, there has not been much consideration of:

- Renewable energy sources
- Supplying energy to homes, schools, vehicles and health services, especially in regional and remote areas

DESIGN CHALLENGE

Design a menu that provides the energy options for the people of Victoria in 2050? Consider:

What are the names of the different types of energy available?

What 'ingredients' (features) are in each type of energy supply?

Are people able to make alterations or substitutions? If so, are there limitations? If not, why not?

What, other than price, might determine the type of energy people choose use?

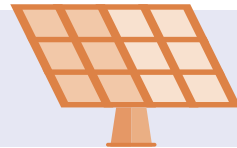
RULES

You must:

Include renewable energy sources

Share, if asked, information with any high priority area

Consider how to supply energy to homes, schools, vehicles and health services, especially in regional and remote areas



You may:

Use any details from the scenario

Use any current consideration details from the original energy supply card

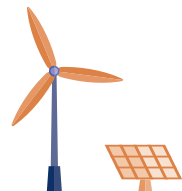
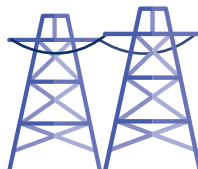
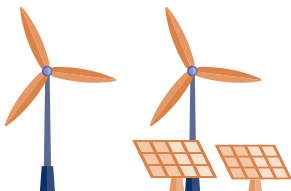
You must not:

Ask for support and information from any other area

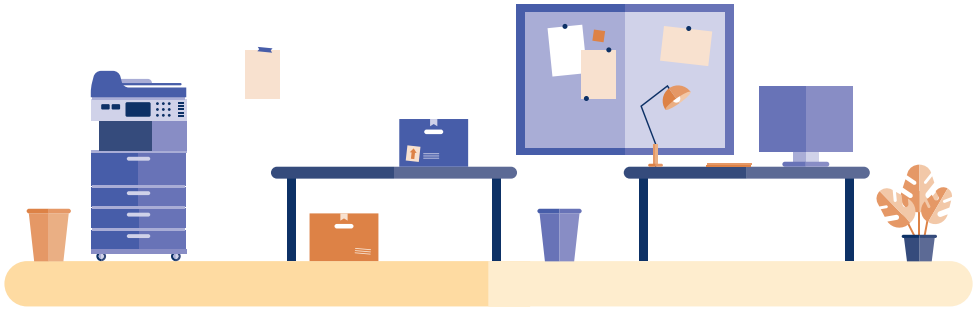
Share any information with any other low priority area

Use any future consideration details from the original energy supply card

Design a different type of artefact representing the future of energy supply in Victoria 2050



EMPLOYMENT



VICTORIA 2050

The parliament of the past decided to place a low priority on employment. Therefore, there has not been much consideration into:

- flexible training options
- improving access to the internet and digital training, especially in regional areas

DESIGN CHALLENGE

Design a magazine cover about employment opportunities for the people of Victoria 2050. Consider the following:

The magazine's brand.
(Think about design choices
for your key audience)

The title of your magazine

The main cover story and
image

what other stories (headlines
and teasers) will appear in
the issue

How often it is published and how much it costs. Is it print,
digital or both?

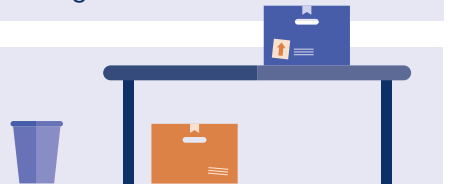
RULES

You must:

Consider flexible training options

Consider improvements to internet access and digital training

Share, if asked, information with any high priority area



You may:

Use any details from the scenario

Use any current consideration details from the original transport card

You must not:

Ask for support and information from any other area

Share any information with any other low priority area

Use any future consideration details from the original employment card

Design a different type of artefact representing the future of employment in Victoria 2050



FOOD SUPPLY



VICTORIA 2050

The parliament of the past decided to place a high priority on food supply. Therefore, there has been lots of opportunities to consider:

- strengthening local supply chains and diversifying food production
- incorporating agricultural technology

DESIGN CHALLENGE

Design a series of wayfinding signs (directions) that help the people of Victoria in 2050 locate their food supply. Consider the following:

The different sources of food and where it is located

The different signs that might be needed (think arrows and icons)

What colour coding and other design features might be useful

The use of easy-to-understand symbols and icons

How the signs might be enhanced to help people who speak different languages or for people with low or no vision

RULES

You must:

Consider how food is supplied and produced

Consider how technology has been incorporated into agriculture

Share, if asked, information with any high priority area



You may:

Use any details from the scenario

Use any current consideration details from the original food supply card

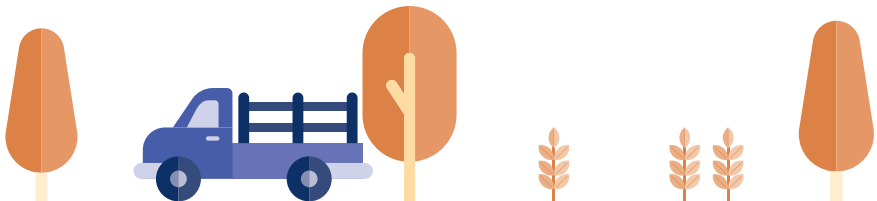
You must not:

Ask for support and information from any other area

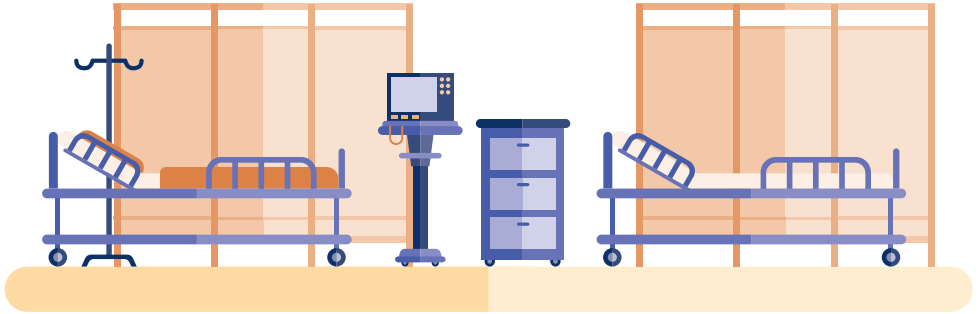
Share any information with any other low priority area

Use any future consideration details from the original food supply card

Design a different type of artefact representing the future of food supply in Victoria 2050



HEALTH SERVICES



VICTORIA 2050

The parliament of the past decided to place a low priority on health services. Therefore, there has not been much consideration of:

- Access to health care in regional areas
- The use of integrated community care, especially to support chronic disease management

DESIGN CHALLENGE

Design a book cover that captures the types of stories people might tell about health services in Victoria in 2050. Consider:

What is the genre of the stories that people might tell (adventure, drama, comedy, romance ...)?

What might the title of the book be?

What picture or illustration would be on the front cover?

What might the critics say about the story?

What might the blurb on the back of the book say? How would you summarise the story of health services in Victoria 2050?

RULES

You must:

Consider access to health care in regional areas

Consider the use of integrated community care, especially to support chronic disease

Share, if asked, information with any high priority area



You may:

Use any details from the scenario

Use any current consideration details from the original health services card

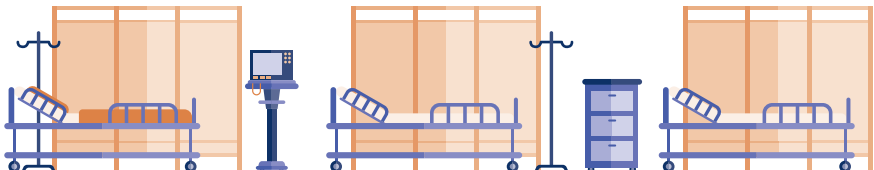
You must not:

Ask for support and information from any other area

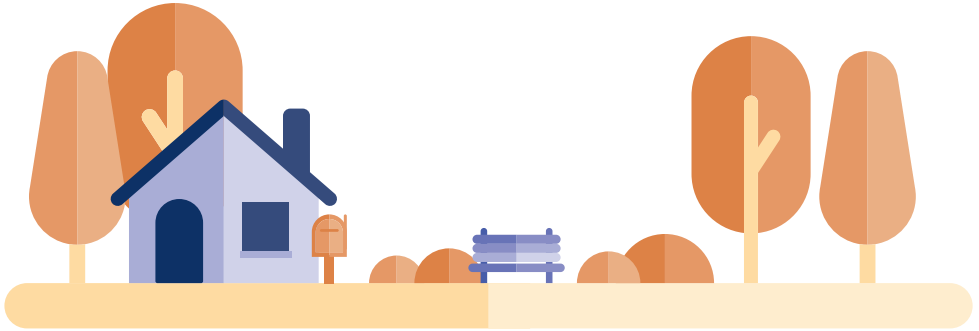
Share any information with any other low priority area

Use any future consideration details from the original food supply card

Design a different type of artefact representing the future of health services in Victoria 2050



HOUSING



VICTORIA 2050

The parliament of the past decided to place a low priority on housing. Therefore, there has not been much consideration of:

- the location of housing to schools
- the distribution of population for electorates

DESIGN CHALLENGE

Design a menu that provides the housing options for the people of Victoria in 2050. Consider:

The names of the different types of housing available?

What, other than price, might determine the type of housing people choose

What 'ingredients' (features) are in each type of housing?

Whether people are able to make alterations or substitutions. If so, are there limitations? If not, why not?

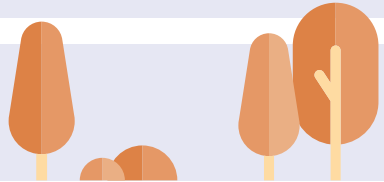
RULES

You must:

Consider the location of housing to schools

Consider how the population has been distributed for elections

Share, if asked, information with any high priority area



You may:

Use any details from the scenario

Use any current consideration details from the original housing area

You must not:

Ask for support and information from any other area

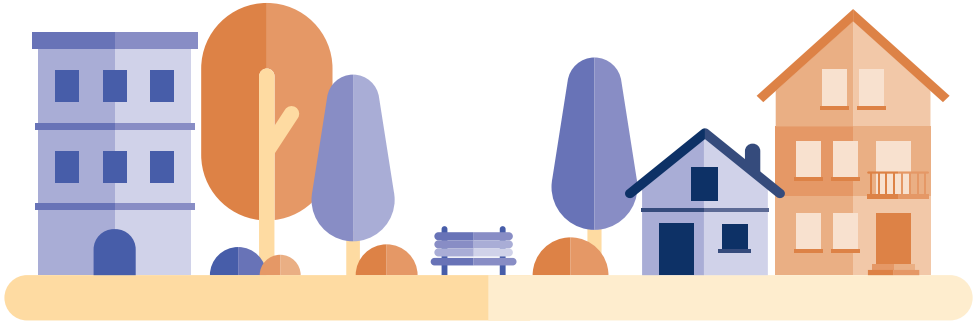
Share any information with any other low priority area

Use any future consideration details from the original housing area

Design a different type of artefact representing the future of housing in Victoria 2050



GREEN SPACE



VICTORIA 2050

The parliament of the past decided to place a low priority on green space. Therefore, there has been less opportunity to put resources into:

- expanding tree canopies in urban areas
- developing vertical gardens and rooftop gardens

DESIGN CHALLENGE

Design a menu that provides the green spaces options for the people of Victoria in 2050? Consider:

The names of the different types of green space available?

What, other than price, might determine the type of green space people choose

What 'ingredients' (features) are in each type of green space?

Whether people are able to make alterations or substitutions. If so, are there limitations? If not, why not?

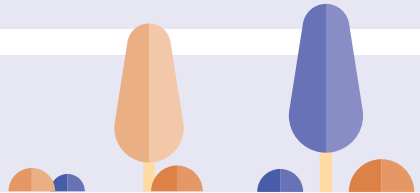
RULES

You must:

Consider how tree canopies have been expanded

Consider how vertical and rooftop gardens have been developed

Share, if asked, information with any high priority area



You may:

Use any details from the scenario

Use any current consideration details from the original green space card

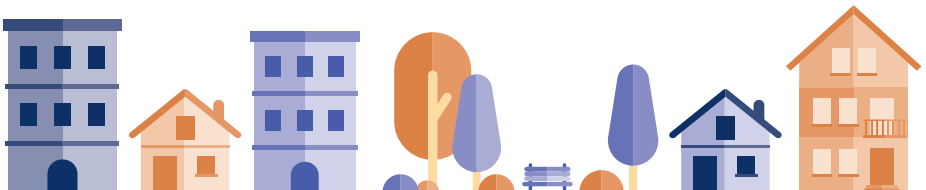
You must not:

Ask for support and information from any other area

Share any information with any other low priority area

Use any future consideration details from the original green space area

Design a different type of artefact representing the future of green space in Victoria 2050



RETAIL AND BUSINESS



VICTORIA 2050

The parliament of the past decided to place a **low** priority on retail and business. Therefore, there has been lots of thought put into the:

- Enhancing digital trade options
- New retail, hospitality and consumer services precincts

DESIGN CHALLENGE

Design product packaging for the retail and business options available to the people of Victoria in 2050. Consider:

What is the name and description of the product?

Is there any advice on how to dispose of the packaging?

What is your product and what is the branding? (Think about design choices that suggest who the main audience is)

What are the ingredients and direction for use, as well as any important storage advice if applicable

How is the product packaged? For instance, does the packaging need to be durable, tamper proof, easy to reseal ...

RULES

You must:

Consider how digital trade options have been enhanced

Consider the development of new retail, hospitality and consumer services precincts

Share, if asked, information with any high priority area



You may:

Use any details from the scenario

Use any current consideration details from the original retail and business card

You must not:

Ask for support and information from any other area

Share any information with any other low priority area

Use any future consideration details from the original retail and business card

Design a different type of artefact representing the future of retail and business in Victoria



REPRESENTATION



VICTORIA 2050

The parliament of the past decided to place a low priority on representation. Therefore, there has not been much consideration into:

- addressing barriers for disadvantaged groups
- the number of people each member of parliament represents

DESIGN CHALLENGE

Design a series of billboards that helps the people of Victoria in 2050 understand how they are represented in parliament. Consider:

What is the simple and bold messaging for the billboard?

What visuals and colours will be used?

What elements will you include to make the billboard memorable but also easy to read?

Where are the billboards going to be located? How will the location change what is on the billboard? (Think about what design elements are included for the target audience in this area)

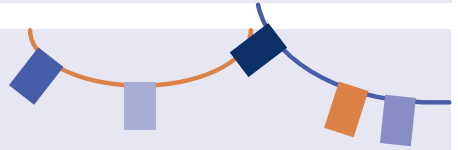
RULES

You must:

Address some barriers for disadvantaged groups

Consider the number of people each member of parliament represents

Share, if asked, information with any high priority area



You may:

Use any details from the scenario

Use any current consideration details from the original representation card

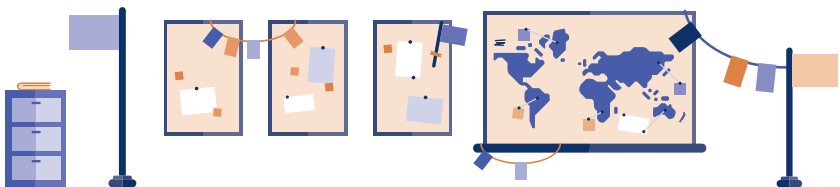
You must not:

Ask for support and information from any other area

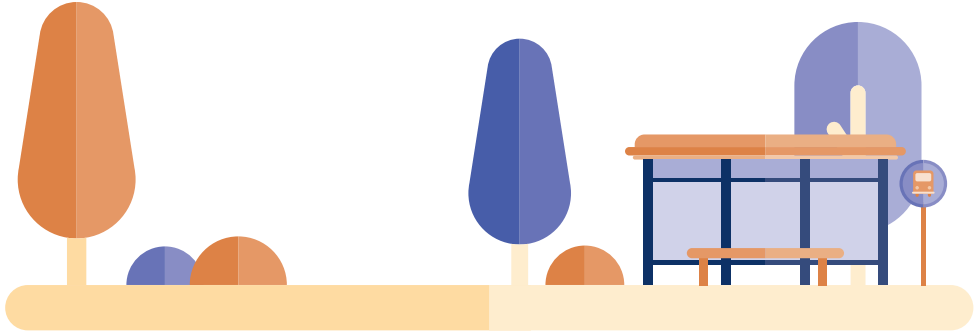
Share any information with any other low priority area

Use any future consideration details from the original representation card

Design a different type of artefact representing the future of representation in Victoria 2050



TRANSPORT



VICTORIA 2050

The parliament of the past decided to place a low priority on transport. Therefore, there has been not much consideration into:

- building accessible transport that connects to housing, community spaces and employment
- improving public transport networks

DESIGN CHALLENGE

Design a book cover that captures the types of stories people might tell about transport in Victoria in 2050. Consider the following:

The genre of the stories that people might tell. Are they fact or fiction? (Also think about whether the stories are historical fiction, adventure, drama, comedy, romance, suspense ...)

The title of the book

What picture or illustration would be on the front

What might the critics say about the story

The details in the blurb on the back of the book. How would you summarise the story of transport in Victoria 2050?

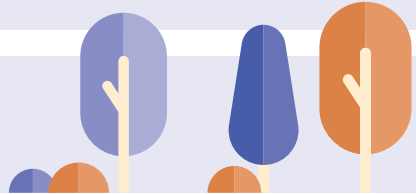
RULES

You must:

Consider how transport is built to connect to various services

Consider how public transport has been improved

Share, if asked, information with any high priority area



You may:

Use any details from the scenario

Use any current consideration details from the original transport card

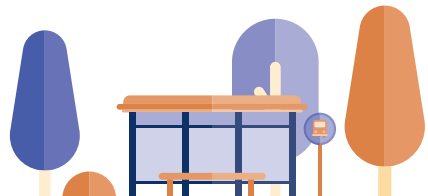
You must not:

Ask for support and information from any other area

Share any information with any other low priority area

Use any future consideration details from the original transport card

Design a different type of artefact representing the future of transport in Victoria 2050



WASTE MANAGEMENT



VICTORIA 2050

The parliament of the past decided to place a low priority on waste management. Therefore, there has not been much consideration into:

- developing regional and local waste recovery businesses
- retro-fitting apartments for the collection and recycling of high volumes of waste

DESIGN CHALLENGE

Design a series of billboards that helps the people of Victoria in 2050 understand waste management. Consider the following:

The simple and bold messaging for the billboard

The visuals and colours that will be used

Any elements to make the billboard memorable but also easy to read

The location of the billboards. (Think about how the location might change the audience and what is on the billboard)

RULES

You must:

Consider how apartment buildings have been retro-fitted for waste collection

Consider how regional areas have developed local waste recovery businesses

Share, if asked, information with any high priority area



You may:

Use any details from the scenario

Use any current consideration details from the original waste management area card

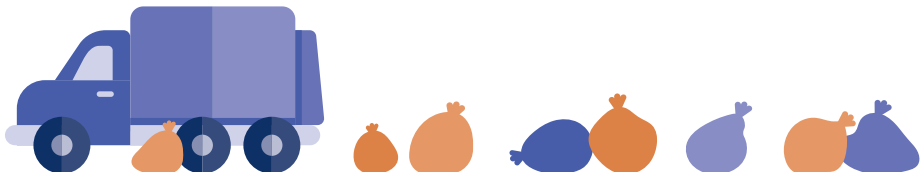
You must not:

Ask for support and information from any other area

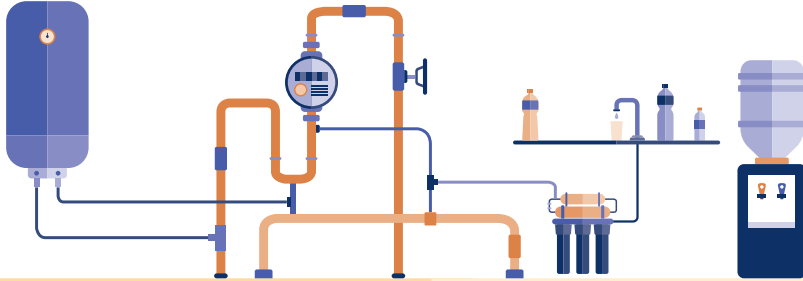
Share any information with any other low priority area

Use any future consideration details from the original waste management area card

Design a different type of artefact representing the future of waste management in Victoria 2050



WATER SUPPLY



VICTORIA 2050

The parliament of the past decided to place a low priority on water supply. Therefore, there has been less opportunity to put resources into:

- Recycling of water for irrigation toilet flushing and industrial processes
- Reducing overall water usage

DESIGN CHALLENGE

Design a series of wayfinding signs (directions) that helps the people of Victoria in 2050 locate their water supply. Consider:

What are the different sources of food and where is it located?

What different signs might be needed? (think arrows and icons)

What colour coding and other design features might be able to help?

Will people be able to easily understand the different symbols and icons?

How might the signs be enhanced to help people who speak different languages or for people with low or no vision?

RULES

You must:

Consider how water can be recycled for irrigation toilet flushing and industrial processes

Consider how to reduce overall water usage

Share, if asked, information with any high priority area



You may:

Use any details from the scenario

Use any current consideration details from the original water supply card

You must not:

Ask for support and information from any other area

Share any information with any other low priority area

Use any future consideration details from the original water supply card

Design a different type of artefact representing the future of water supply in Victoria 2050

