



# GOVERNMENT PARTY

The government party is the party with the majority of seats in the Legislative Assembly (lower house).

Some questions to get started:

What is your party's name?

Who is your leader (the Premier)?

Who is the party's Minister for Victoria's Future?

What are your party's core values that can be used to help make decisions?

## DECIDING ON THE PRIORITIES

The parliament has been presented with a research paper, called Victoria 2050. The paper summarises findings from committee reports and research from the Parliamentary Library.

### FINDINGS

Victoria's population is predicted to reach 10 million.

There are 14 areas considered essential to Victoria's future development; limited resources suggest that not all of them can receive the same amount of attention.

### RECOMMENDATIONS

That parliament:

- considers the impacts and benefits of population growth in its decision-making
- selects three areas of high priority
- selects three low attention areas, given the limitations on resources



# GOVERNMENT PARTY

The government party is the party with the majority of seats in the Legislative Assembly (lower house).

Some questions to get started:

What is your party's name?

Who is your leader (the Premier)?

Who is the party's Minister for Victoria's Future?

What are your party's core values that can be used to help make decisions?

## DECIDING ON THE PRIORITIES

The parliament has been presented with a research paper, called Victoria 2050. The paper summarises findings from committee reports and research from the Parliamentary Library.

### FINDINGS

Victoria's population is predicted to reach 10 million.

There are 14 areas considered essential to Victoria's future development; limited resources suggest that not all of them can receive the same amount of attention.

### RECOMMENDATIONS

That parliament:

- considers the impacts and benefits of population growth in its decision-making
- selects three areas of high priority
- selects three low attention areas, given the limitations on resources



# GOVERNMENT PARTY

The government party is the party with the majority of seats in the Legislative Assembly (lower house).

Some questions to get started:

What is your party's name?

Who is your leader (the Premier)?

Who is the party's Minister for Victoria's Future?

What are your party's core values that can be used to help make decisions?

## DECIDING ON THE PRIORITIES

The parliament has been presented with a research paper, called Victoria 2050. The paper summarises findings from committee reports and research from the Parliamentary Library.

### FINDINGS

Victoria's population is predicted to reach 10 million.

There are 14 areas considered essential to Victoria's future development; limited resources suggest that not all of them can receive the same amount of attention.

### RECOMMENDATIONS

That parliament:

- considers the impacts and benefits of population growth in its decision-making
- selects three areas of high priority
- selects three low attention areas, given the limitations on resources



# GOVERNMENT PARTY

The government party is the party with the majority of seats in the Legislative Assembly (lower house).

Some questions to get started:

What is your party's name?

Who is your leader (the Premier)?

Who is the party's Minister for Victoria's Future?

What are your party's core values that can be used to help make decisions?

## DECIDING ON THE PRIORITIES

The parliament has been presented with a research paper, called Victoria 2050. The paper summarises findings from committee reports and research from the Parliamentary Library.

### FINDINGS

Victoria's population is predicted to reach 10 million.

There are 14 areas considered essential to Victoria's future development; limited resources suggest that not all of them can receive the same amount of attention.

### RECOMMENDATIONS

That parliament:

- considers the impacts and benefits of population growth in its decision-making
- selects three areas of high priority
- selects three low attention areas, given the limitations on resources



# GOVERNMENT PARTY

The government party is the party with the majority of seats in the Legislative Assembly (lower house).

Some questions to get started:

What is your party's name?

Who is your leader (the Premier)?

Who is the party's Minister for Victoria's Future?

What are your party's core values that can be used to help make decisions?

## DECIDING ON THE PRIORITIES

The parliament has been presented with a research paper, called Victoria 2050. The paper summarises findings from committee reports and research from the Parliamentary Library.

### FINDINGS

Victoria's population is predicted to reach 10 million.

There are 14 areas considered essential to Victoria's future development; limited resources suggest that not all of them can receive the same amount of attention.

### RECOMMENDATIONS

That parliament:

- considers the impacts and benefits of population growth in its decision-making
- selects three areas of high priority
- selects three low attention areas, given the limitations on resources



# GOVERNMENT PARTY

The government party is the party with the majority of seats in the Legislative Assembly (lower house).

Some questions to get started:

What is your party's name?

Who is your leader (the Premier)?

Who is the party's Minister for Victoria's Future?

What are your party's core values that can be used to help make decisions?

## DECIDING ON THE PRIORITIES

The parliament has been presented with a research paper, called Victoria 2050. The paper summarises findings from committee reports and research from the Parliamentary Library.

### FINDINGS

Victoria's population is predicted to reach 10 million.

There are 14 areas considered essential to Victoria's future development; limited resources suggest that not all of them can receive the same amount of attention.

### RECOMMENDATIONS

That parliament:

- considers the impacts and benefits of population growth in its decision-making
- selects three areas of high priority
- selects three low attention areas, given the limitations on resources



# OPPOSITION PARTY

The opposition party is the party with the second largest number of members in the Legislative Assembly (lower house).

Some questions to get started:

What is your party's name?

Who is your leader (Opposition Leader)?

Who is the Shadow Minister for Victoria's Future?

What are your party's core values that can be used to help make decisions?

## DECIDING ON THE PRIORITIES

The parliament has been presented with a research paper, called Victoria 2050. The paper summarises findings from committee reports and research from the Parliamentary Library.

### FINDINGS

Victoria's population is predicted to reach 10 million.

There are 14 areas considered essential to Victoria's future development; limited resources suggest that not all of them can receive the same amount of attention.

### RECOMMENDATIONS

That parliament:

- considers the impacts and benefits of population growth in its decision-making
- selects three areas of high priority
- selects three low attention areas, given the limitations on resources



# OPPOSITION PARTY

The opposition party is the party with the second largest number of members in the Legislative Assembly (lower house).

Some questions to get started:

What is your party's name?

Who is your leader (Opposition Leader)?

Who is the Shadow Minister for Victoria's Future?

What are your party's core values that can be used to help make decisions?

## DECIDING ON THE PRIORITIES

The parliament has been presented with a research paper, called Victoria 2050. The paper summarises findings from committee reports and research from the Parliamentary Library.

### FINDINGS

Victoria's population is predicted to reach 10 million.

There are 14 areas considered essential to Victoria's future development; limited resources suggest that not all of them can receive the same amount of attention.

### RECOMMENDATIONS

That parliament:

- considers the impacts and benefits of population growth in its decision-making
- selects three areas of high priority
- selects three low attention areas, given the limitations on resources





# OPPOSITION PARTY

The opposition party is the party with the second largest number of members in the Legislative Assembly (lower house).

Some questions to get started:

What is your party's name?

Who is your leader (Opposition Leader)?

Who is the Shadow Minister for Victoria's Future?

What are your party's core values that can be used to help make decisions?

## DECIDING ON THE PRIORITIES

The parliament has been presented with a research paper, called Victoria 2050. The paper summarises findings from committee reports and research from the Parliamentary Library.

### FINDINGS

Victoria's population is predicted to reach 10 million.

There are 14 areas considered essential to Victoria's future development; limited resources suggest that not all of them can receive the same amount of attention.

### RECOMMENDATIONS

That parliament:

- considers the impacts and benefits of population growth in its decision-making
- selects three areas of high priority
- selects three low attention areas, given the limitations on resources



# MINOR PARTY

A minor party may have some seats in the Legislative Assembly (lower house) and/or the Legislative Council (upper house).

Some questions to get started:

What is your party's name?

Who is your leader?

Who is the spokesperson for Victoria's Future?

What are your party's core values that can be used to help make decisions?

## DECIDING ON THE PRIORITIES

The parliament has been presented with a research paper, called Victoria 2050. The paper summarises findings from committee reports and research from the Parliamentary Library.

### FINDINGS

Victoria's population is predicted to reach 10 million.

There are 14 areas considered essential to Victoria's future development; limited resources suggest that not all of them can receive the same amount of attention.

### RECOMMENDATIONS

That parliament:

- considers the impacts and benefits of population growth in its decision-making
- selects three areas of high priority
- selects three low attention areas, given the limitations on resources



# MINOR PARTY

A minor party may have some seats in the Legislative Assembly (lower house) and/or the Legislative Council (upper house).

Some questions to get started:

What is your party's name?

Who is your leader?

Who is the spokesperson for Victoria's Future?

What are your party's core values that can be used to help make decisions?

## DECIDING ON THE PRIORITIES

The parliament has been presented with a research paper, called Victoria 2050. The paper summarises findings from committee reports and research from the Parliamentary Library.

### FINDINGS

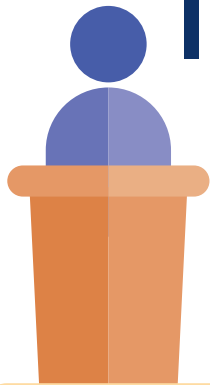
Victoria's population is predicted to reach 10 million.

There are 14 areas considered essential to Victoria's future development; limited resources suggest that not all of them can receive the same amount of attention.

### RECOMMENDATIONS

That parliament:

- considers the impacts and benefits of population growth in its decision-making
- selects three areas of high priority
- selects three low attention areas, given the limitations on resources



# INDEPENDENT PARTY

An independent is a member of parliament, but does not belong to any political party.

As an independent member, you :

don't have a party name

are the leader

are able to share your ideas about Victoria's Future

What are your core values that can be help make decisions?

## DECIDING ON THE PRIORITIES

The parliament has been presented with a research paper, called Victoria 2050. The paper summarises findings from committee reports and research from the Parliamentary Library.

### FINDINGS

Victoria's population is predicted to reach 10 million.

There are 14 areas considered essential to Vicotria's future development; limited resources suggest that not all of them can receive the same amount of attention.

### RECOMMENDATIONS

That parliament:

- considers the impacts and benefits of population growth in its decision-making
- selects three areas of high priority
- selects three low attention areas, given the limitations on resources