

Presentation to the Annual Public Accounts and Estimates
Committee Budget Estimates Inquiry

Jacinta Allan MP

Deputy Premier

Minister for the Suburban Rail Loop



Department
of Transport
and Planning



Managing our growth sustainably

11m

Victoria's population
by 2056



9m

Melbourne's
population by 2056



11.8m

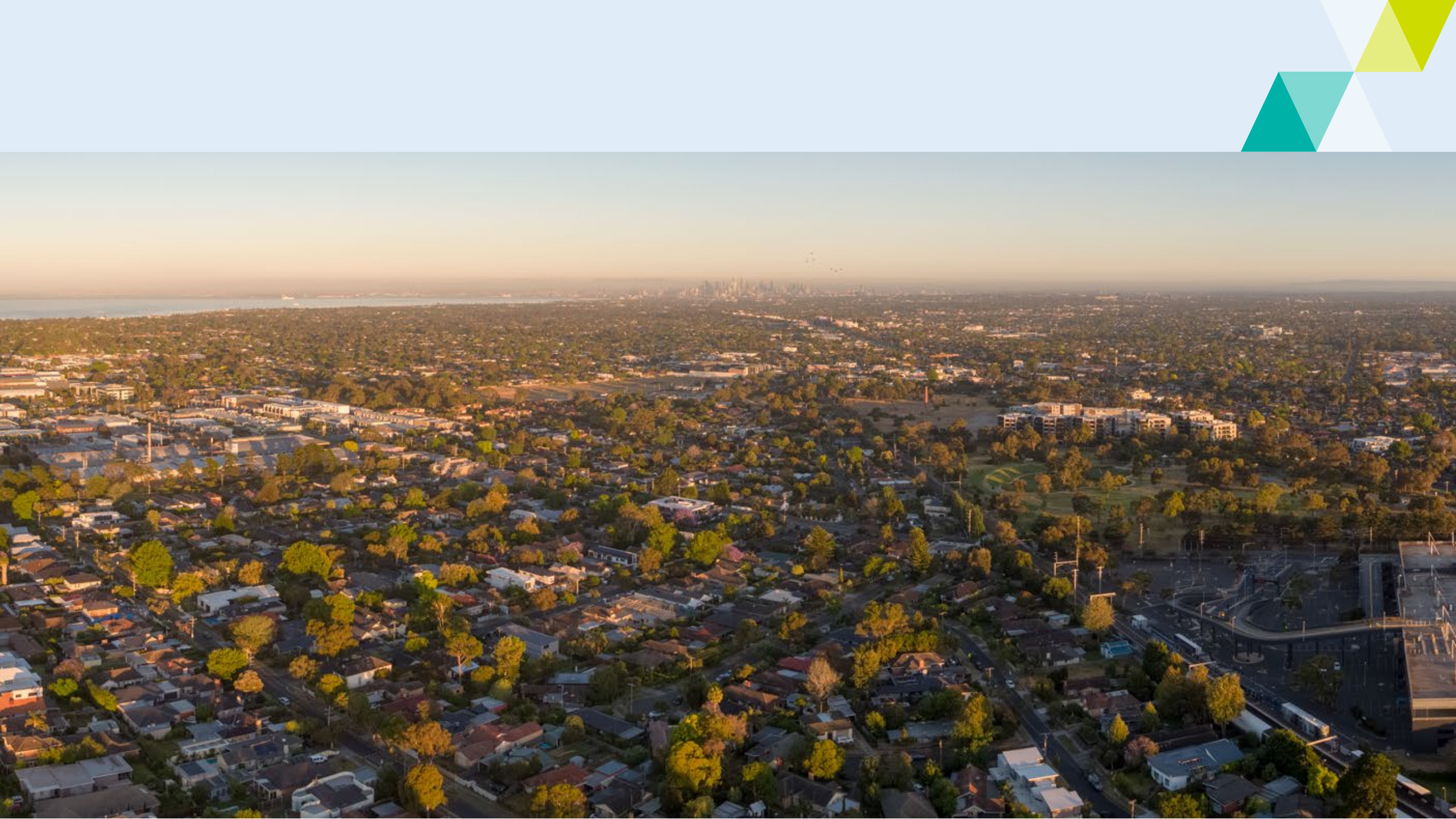
Increase in the number
of daily trips made on
the transport network
by 2056



80%

Increase in the number
of daily vehicle trips by
2056





Transport and connectivity benefits

SRL East and SRL North



430,000
passengers daily



31,000 daily journeys to &
from Melbourne Airport



Train **every 6 minutes** in the
peak, **every 2 minutes** when
demand increases



Passenger loads on existing
lines connected to SRL to
drop by **average 11%**

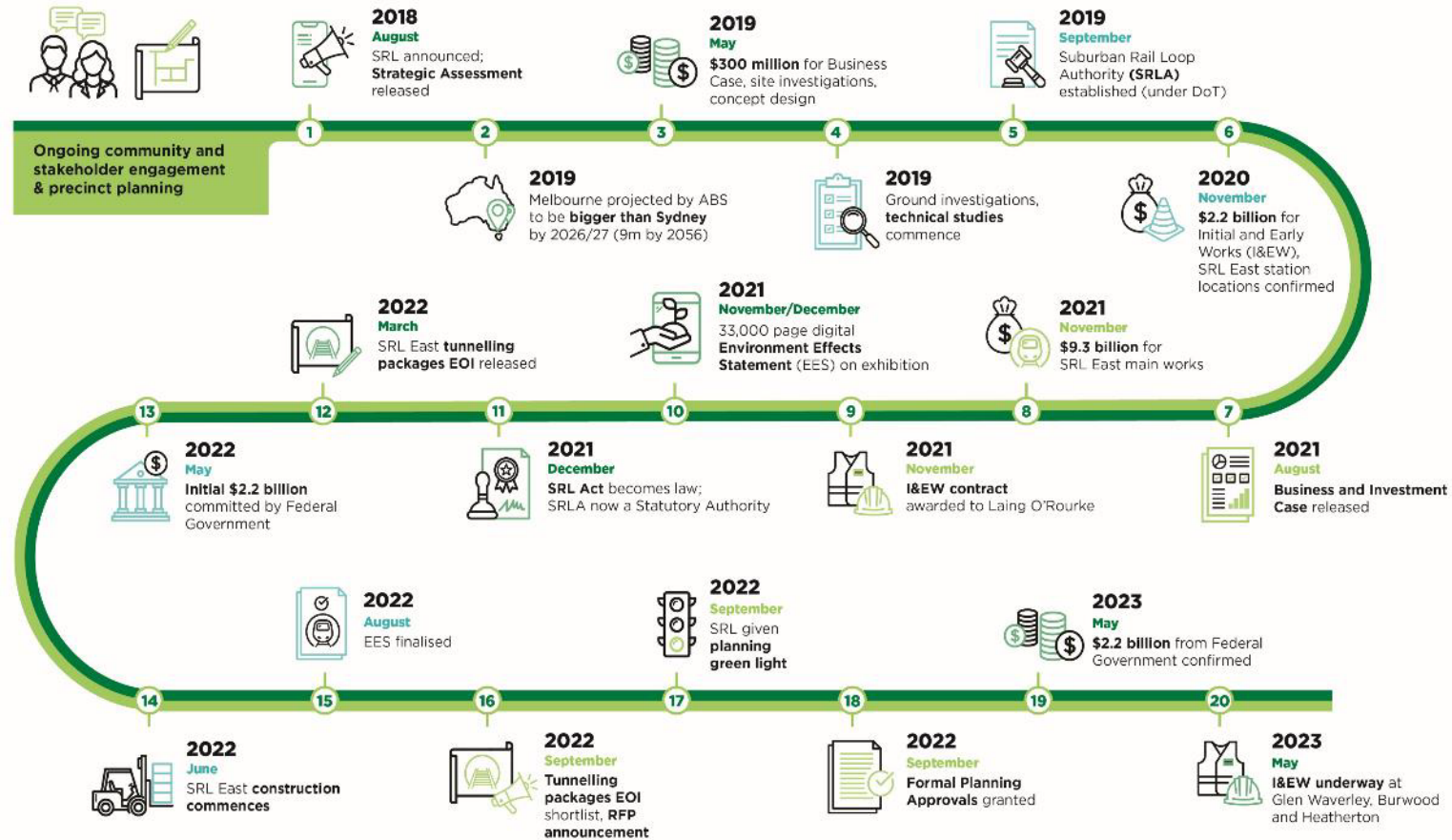


\$58.7 billion in
**economic, social and
environmental benefits**



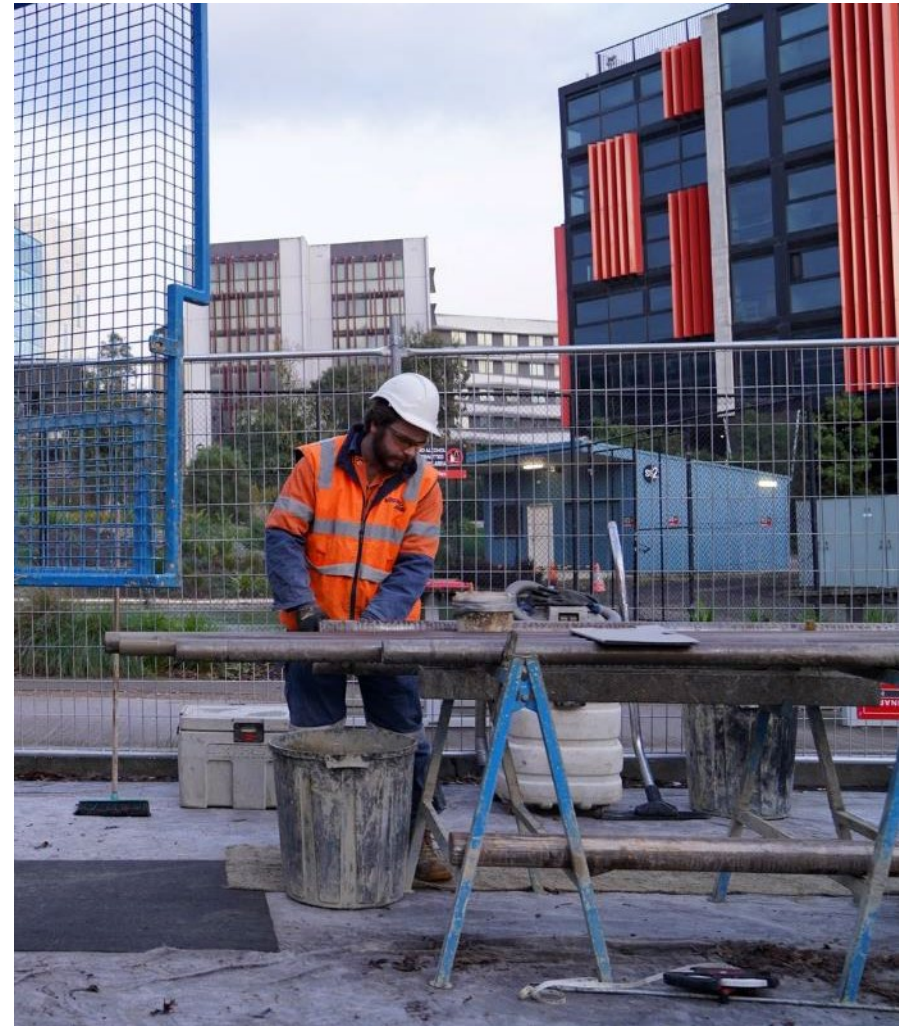
606,000 car trips &
2.2 million fewer kms
off the road each day

Investment and early works timeline



Extensive ground investigations

- A geological model of **rock and soil conditions** has been developed, supported by extensive hydrogeological, geotechnical and environmental testing **since mid 2019**
- To date, **900+ geotechnical investigation locations complete** (boreholes, CPTs, test pits) and **12,000 samples** tested (Geotech, Contamination and Groundwater) along the 26km tunnels alignment
- Developed **spoil management strategy** and working with EPA



Construction progress

- More than **3.5 million** hours worked
- Crews moving **utilities and services**, making **road** modifications and establishing **launch sites** for the tunnel-boring machines
- SRL East will create up to **8000** jobs
- **14 percent** of hours to be performed by apprentices, trainees and cadets.
- Two major tunnelling **contracts** to be awarded in 2023-2024
- Tunnelling to start by 2026
- **EOI** to open for the **tunnel systems and infrastructure** – and a **15-year term** to operate the SRL East network.



Monash Precinct

- **Monash** will have a **rail connection for the first time** with direct access to **Monash University** and Melbourne's **biggest employment centre** outside the CBD
- An extra **19,000** jobs within a short walk from the new Monash Station in 2036
- **100,000 more jobs** accessible under an hour on public transport for people from Monash in 2036
- **1.2 million people** will be able to take public transport to get to jobs in Monash when SRL North is complete in 2056, and **800,000** in 2036 with SRL East
- Population is expected to grow in Monash from **13,500 in 2021** to **30,500 by 2056** with SRL East (4000+ more than without SRL).



Melbourne: A city of centres



SRL Precincts 1.6km zones
around each SRL station



Precinct initiatives include
walking & cycling paths,
station plazas, new &
improved **public space**



Investment to attract
drawcard businesses
(anchor tenants)



By 2056, SRL Precincts will be
home to **545,000 jobs** and
47,500 additional households



Well-designed
neighbourhoods with a focus
on **trees and sustainability**